

## ATTENTION:

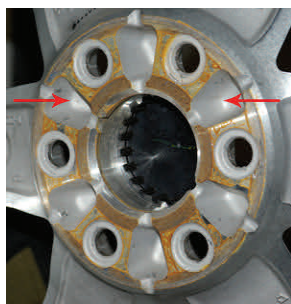
Please note the following prior to installation of SST Lift kits:

**69-3285, 69-3295, 69-3485, 69-3495**

When using OEM wheels, ReadyLIFT offers the following options: **10-3485** or **15-3485**



**10-3485** for use on OE wheels with pockets between the lug holes on the back side of the wheel, as arrows indicate. Some OE wheels are not compatible, consult your installer.



## Installation Instructions:

Make sure prior to installation of wheel adapter or wheel spacer, the factory wheel retaining clips, and any corrosion must be removed in order to allow proper seating on hub.

Place wheel adapter/spacer onto factory wheel studs, check proper seating onto hub.

**10-3485 only:** Install provided lug nuts onto OE wheel studs and torque to factory spec.

Place wheel onto wheel studs and reinstall lugs nuts and toque to factory spec.

Lower vehicle to ground and check tire/wheel clearance by steering to full lock back and forth.