

READYLIFT[®]

SUSPENSIONS

77-1320 RAM 2500 Dual Steering Stabilizer



READ INSTRUCTIONS THOROUGHLY AND COMPLETELY BEFORE BEGINNING INSTALLATION.

INSTALLATION BY A CERTIFIED PROFESSIONAL MECHANIC IS HIGHLY RECOMMENDED.

READYLIFT IS NOT RESPONSIBLE FOR ANY DAMAGE OR FAILURE RESULTING FROM IMPROPER INSTALLATION.

Safety Warning

MISUSE OF THIS PRODUCT COULD LEAD TO INJURY OR DEATH.

Suspension systems or components that enhance the on and off-road performance of your vehicle may cause it to handle differently than it did from the factory. Extreme care must be used to prevent loss of control or vehicle rollover during abrupt maneuvers.

Always operate your vehicle at reduced speeds to ensure your ability to control your vehicle under all driving conditions. Failure to drive safely may result in serious injury or death to driver and passengers.

Driver and passengers must ALWAYS wear your seat belts, avoid quick sharp turns and other sudden maneuvers. ReadyLIFT Suspension does not recommend the combined use of suspension lifts, body lifts, or other lifting devices.

You should never operate your vehicle under the influence of alcohol or drugs.

Constant maintenance is required to keep your vehicle safe. Thoroughly inspect your vehicle before and after every off-road use.

It is the responsibility of the retailer and/or the installer to review all state and local laws, with the end user of this product, related to bumper height laws and the lifting of their vehicle before the purchase and installation of any ReadyLIFT products.

It is the responsibility of the driver/s to check their surrounding area for obstructions, people, and animals before moving the vehicle.

All raised vehicles have increased blind spots; damage, injury and/or death can occur if these instructions are not followed.

Installation Warning

All steps and procedures described in these instructions were performed while the vehicle was properly supported on a two post vehicle lift with safety jacks.

Use caution during all disassembly and assembly steps to insure suspension components are not over extended causing damage to any vehicle components and parts included in this kit.

Included instructions are guidelines only for recommended procedures and are not meant to be definitive. Installer is responsible to insure a safe and controllable vehicle after performing modifications.

ReadyLIFT Suspension recommends the use of an OE Service Manual for model/year of vehicle when disassembly and assembly of factory and related components.

Unless otherwise specified, tighten all bolts and fasteners to standard torque specifications listed within the OE Service Manual.

Suspension components that use rubber or urethane bushings should be tightened with the vehicle at normal ride height. This will prevent premature wear or failure of the bushing and maintain ride comfort.

Larger tire and wheel combinations may increase leverage on suspension, steering, and related components.

Due to payload options and initial ride height variances, the amount of lift is a base figure. Final ride height dimensions may vary in accordance to original vehicle ride height. Always measure the vehicle ride height prior to beginning installation.

BILL OF MATERIALS

DESCRIPTION	QTY
MAIN BODY	1
BILSTEIN STEERING STABILIZER	2
TIE ROD BRACKET (PASSENGER)	1
TIE ROD BRACKET (DRIVER)	1
TIE ROD U-SHAPED BRACKET	1
STABILIZER CAPTURE PLATE	1
CRUSH SLEEVE	1
DIFF SPACER	1
TIE ROD SPACER	1
M8-1 x 40 mm HEX HEAD BOLT	2
M8 FLAT WASHER	2
M12-1.25 x 80mm HEX HEAD BOLT	1
M12-1.25 x 75mm HEX HEAD BOLT	4
M12-1.25 C-LOCK NUT	5
M12 FLAT WASHER	10

WARNING

Before starting installation: ReadyLIFT Suspension highly recommends that the installation of this product be performed by a professional mechanic with experience working on and installing suspension products. Professional knowledge and skill will typically yield the best installation results. If you need an installer in your area, please contact ReadyLIFT Suspension Customer Service to find one of our "Pro-Grade" Dealers.

INSTALLATION BY A PROFESSIONAL IS HIGHLY RECOMMENDED.

- A Factory Service Manual for your specific Year / Make / Model is highly recommended for reference during installation.
- All lifted vehicles may require additional driveline modifications and / or balancing.
- A vehicle alignment is REQUIRED after installation of this product.
- Speedometer / Computer recalibration is required if changing +/- 10% from factory tire diameter.
- A vehicle lift or hoist greatly reduces installation time. Installation time estimates are based on an available vehicle hoist.
- Vehicle must be in excellent operating condition. Repair or replace any and all worn or damaged components prior to installation.

*****Parts shown in red for picture clarification only*****

ReadyLIFT recommends all steps and procedures described in these instructions be performed while the vehicle is properly supported on a two post vehicle lift with safety jacks.

Otherwise, park vehicle on a clean flat surface and block the rear wheels for safety. Engage the parking brake.

Raise the front of the vehicle and support with safety jack stands on the axle as close to the tires as possible.

Remove the two M12 bolts (18mm) holding the factory passenger side bracket to the tie rod.

Retain the factory hardware.

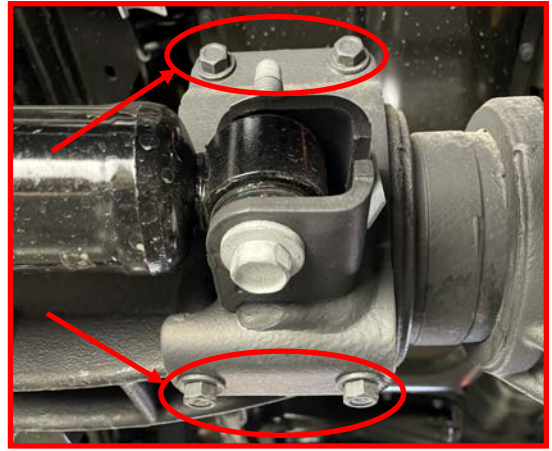


Carefully use a dead blow hammer to shimmy the bracket free.

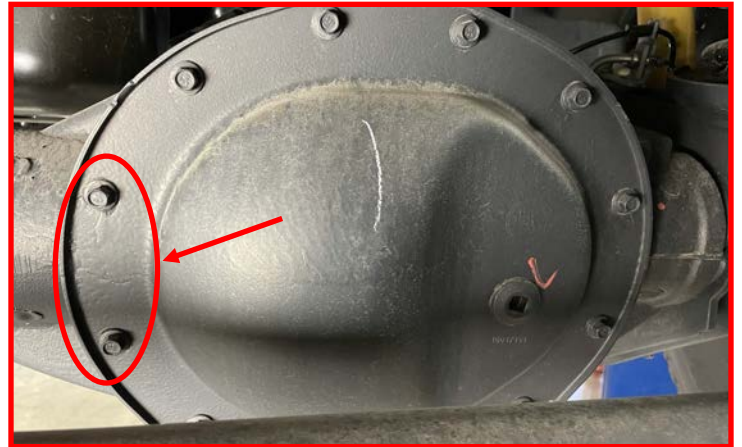


Remove the four M10 bolts (13mm) holding the factory bracket onto the axle. Discard the factory stabilizer and brackets

Retain the factory hardware.



Remove the two M8 factory bolts (10mm) at the 9 o'clock position from the diff cover.



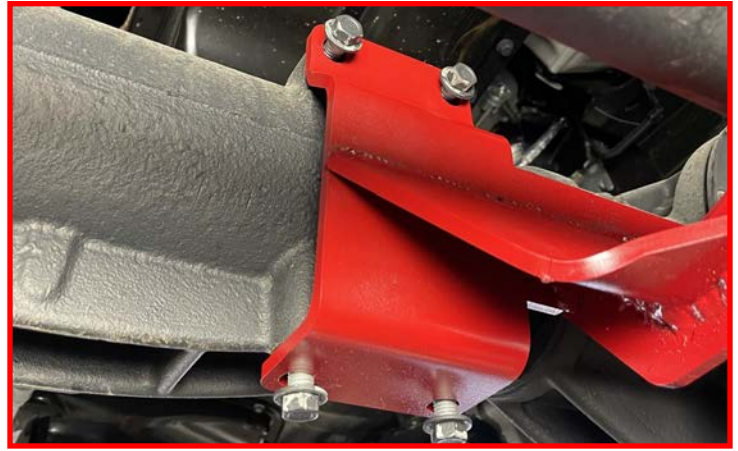
Using the **factory hardware**, install the ReadyLIFT Dual Steering Stabilizer bracket onto the axle. Do not tighten at this time.



Slide the 0.25" Diff Spacer in-between the diff cover and the Dual Steering Stabilizer bracket. Install using the supplied **M8-1.25 x 40mm bolts (13mm) and M8 washers**. Do not tighten at this time.



Torque the four M10 steering stabilizer bolts to 40 ft-lb.

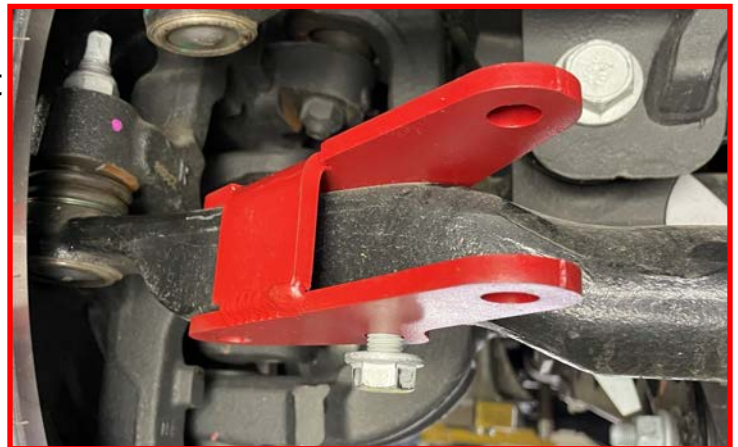


Torque the two M8 diff cover bolts to 20 ft-lb.



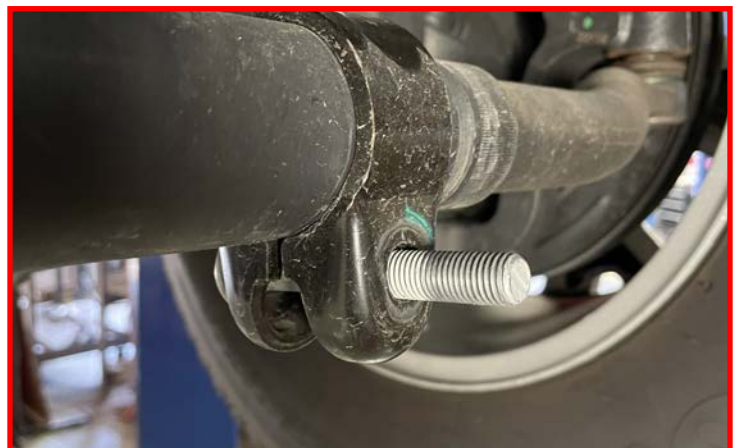
Use a dead blow hammer to install the passenger side ReadyLIFT Tie Rod Bracket to the tie rod using the **factory hardware**. Make sure the bolts are installed from the bottom.

Torque the factory hardware to 60 ft-lb.



Remove the nut from the tie rod pinch point (18mm). NOTE: Some Ram 2500 models have two bolts on the tie rod pinch point.

Retain the factory hardware.



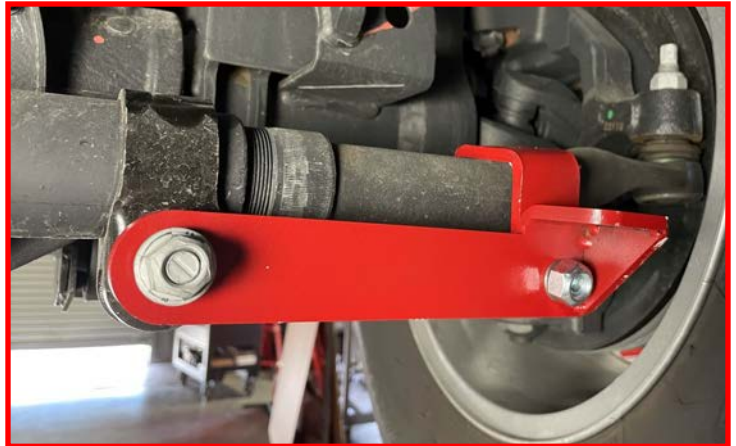
Install the driver side ReadyLIFT U-shaped bracket and crush sleeve outboard of the tie rod pinch point using the supplied **M12-1.25 x 80mm** bolt (19MM), **M12-1.25 nut**, and two **M12 flat washers**. Make sure to install the bolt from back to front.



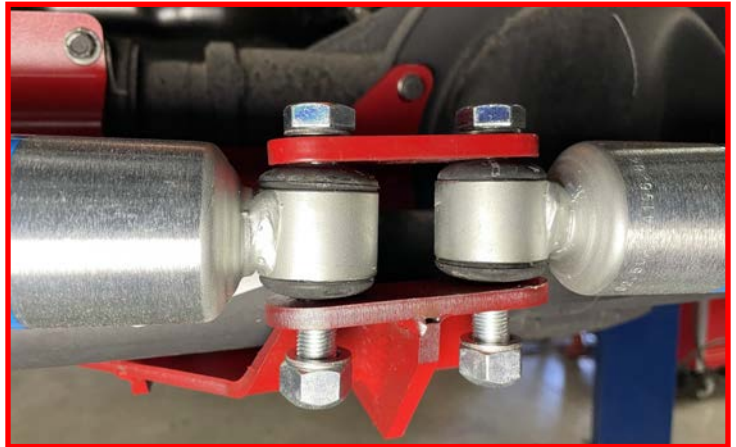
Install the driver side ReadyLIFT bracket onto the tie rod pinch point using the **factory nut**. Do not tighten at this time.

Torque the tie rod pinch point hardware to 40 ft-lb.

Torque to the U-shaped bracket to 60 ft-lb.



Locate the Bilstein Steering Stabilizers. Using the supplied **M12-1.25 x 75mm** bolts, **M12-1.25 nuts**, four **M12 flat washers**, and 0.25" capture plate, install the stabilizers onto the stabilizer bracket. Make sure to install the bolts from the top down with the body of the stabilizers facing towards the center. Do not tighten at this time.



Install the stabilizers damper to the passenger side bracket using the provided **M12-1.25 x 75mm** bolts, **M12-1.25 nuts**, and **M12 flat washers**.



Install the stabilizers damper to the driver side bracket using the provided **M12-1.25 x 75mm bolts**, **M12-1.25 Nuts**, and **M12 Flat Washers**.



Torque the stabilizer damper hardware to 60 ft-lb.



Rotate the wheels from lock to lock and verify all clearances between the tire, frame, and suspension components before lowering the vehicle. Adjust as necessary.



FAILURE TO PERFORM THE POST INSPECTION CHECKS MAY RESULT IN VEHICLE COMPONENT DAMAGE AND/OR PERSONAL INJURY OR DEATH TO THE DRIVER AND/OR OTHERS.

Final Checks & Adjustments

Once the vehicle is lowered to the ground, check all parts which have rubber or urethane components to ensure proper torque. Torque lug nuts to the wheel manufacturer specs. Move vehicle backwards and forwards a short distance to allow suspension components to adjust. Turn the front wheels completely left then right and verify adequate tire, wheel, brake line, and ABS wire clearance. Test and inspect steering, brake and suspension components for tightness and proper operation. Inspect brakes hoses and ABS lines for adequate slack at full extension, adjust as necessary.

RECHECK ALL HARDWARE FOR PROPER TORQUE VALUES AFTER 500 MILES, AND THEN PERIODICALLY AT EACH SERVICE INTERVAL THERAFTER.

Vehicle Handling Warning

Increasing the height of your vehicle raises the center of gravity and can affect stability and control. Use caution on turns and when making steering corrections.

Vehicles with larger tires and wheels will handle differently than stock vehicles. Take time to familiarize yourself with the handling of your vehicle.

Wheel Alignment/Headlamp Adjustment

It is necessary to have a proper and professional wheel alignment performed by a certified alignment technician. Align the vehicle to recommended specifications. It is recommended that your vehicle alignment be checked after any off-road driving.

In addition to your vehicle alignment, for your safety and others, it is necessary to check and adjust your vehicle headlamps for proper aim and alignment. If the vehicle is equipped with active or passive safety/collision monitoring and/or avoidance systems including, but not limited to, camera- or radar-based systems, check and adjust your vehicle's systems for proper aim and function.