



**IF YOUR ReadyLIFT PRODUCT IS MISSING A PART  
OR HAS A DAMAGED PART, PLEASE  
CONTACT CUSTOMER SERVICE DIRECTLY.**

**A NEW REPLACEMENT PART WILL BE SENT TO YOU IMMEDIATELY**

**\*\*Please retain this document in your vehicle at all times\*\***

### **ReadyLIFT Limited Lifetime NO Fine Print Warranty**

**This unique product warranty proves our commitment to the quality and reliability of every product that ReadyLIFT manufactures. The ReadyLIFT warranty does not include shock absorbers.**

**The ReadyLIFT product warranty only extends to the original purchaser of any ReadyLIFT product, if it breaks, we will give you a new part. Warranty does not apply to discontinued parts**

Product purchased directly from ReadyLIFT has a 30 day return policy on uninstalled products from the date of purchase. Uninstalled product returns must be in the original ReadyLIFT packaging. **Returns without RGA# will be refused.** Contact ReadyLIFT directly about any potentially defective parts prior to removal from vehicle. If the part in question is deemed warrantable an RGA# will be assigned and can be returned for repair or replacement. Replacement parts required prior to warranty claim completion must be purchased. Upon receipt and verification of deemed warranty parts claim, a credit or refund can then be processed to complete warranty claim transaction.

ReadyLIFT products are **NOT** intended for off-road abuse. Any damage or failure as a result from off-road abuse voids the warranty of the ReadyLIFT product. ReadyLIFT is **NOT** responsible for any subsequent damages to any related vehicle parts due to misuse, abuse, improper installation, or lack of maintenance. Furthermore, ReadyLIFT reserves the right to change, modify or cancel this warranty without prior notice.

**Please read Instructions thoroughly and completely before beginning installation.  
Installation by a certified mechanic is recommended.**

**ReadyLIFT Suspension Inc. is NOT responsible for any damage or failure resulting from improper installation.**

**Safety Warning:** Suspension systems or components that enhance the on and off-road performance of your vehicle may cause it to handle differently than it did from the factory. Extreme care must be used to prevent loss of control or vehicle rollover during abrupt maneuvers. Always operate your vehicle at reduced speeds to ensure your ability to control your vehicle under all driving conditions. Failure to drive safely may result in serious injury or death to driver and passengers. Driver and passengers must ALWAYS wear your seat belts, avoid quick sharp turns and other sudden maneuvers. ReadyLIFT Suspension Inc. does not recommend the combined use of suspension lifts, body lifts, or other lifting devices. You should never operate your vehicle under the influence of alcohol or drugs. Constant maintenance is required to keep your vehicle safe. Thoroughly inspect your vehicle before and after every off-road use.

**Installation Warning:** All steps and procedures described in these instructions were performed while the vehicle was properly supported on a two post vehicle lift with safety jacks. Use caution during all disassembly and assembly steps to insure suspension components are not over extended causing damage to any vehicle components and parts included in this kit. Included instructions are guidelines only for recommended procedures and are not meant to be definitive. Installer is responsible to insure a safe and controllable vehicle after performing modifications.

ReadyLIFT Suspension Inc. recommends the use of an OE Service Manual for model/year of vehicle when disassembly and assembly of factory and related components. Unless otherwise specified, tighten all bolts and fasteners to standard torque specifications listed within the OE Service Manual, or as referenced in the torque specification list provided in these instructions.

Suspension components that use rubber or urethane bushings should be tightened with the vehicle at normal ride height. This will prevent premature wear or failure of the bushing and maintain ride comfort. Larger tire and wheel combinations may increase leverage on suspension, steering, and related components. Due to payload options and initial ride height variances, the amount of lift is a base figure. Final ride height dimensions may vary in accordance to original vehicle ride height. Always measure the vehicle ride height prior to beginning installation.

### Vehicle ride height chart

**Driver Front:  
Stock height**

**Lift installed**

**Driver Rear:  
Stock height**

**Lift installed**

**Pass. Front:  
Stock height**

**Lift installed**

**Pass. Rear:  
Stock height**

**Lift installed**

<b>Bolt Size Millimeters</b>	<b>Torque Specs in FT/LB</b>		<b>Bolt Size SAE</b>	<b>Torque Specs in FT/LB</b>	
	<b>Metric Grade 8.8</b>	<b>Metric Grade 10.9</b>		<b>Grade 5</b>	<b>Grade 8</b>
<b>6mm</b>	<b>6</b>	<b>8</b>	<b>5/16</b>	<b>15</b>	<b>20</b>
<b>8mm</b>	<b>16</b>	<b>22</b>	<b>3/8</b>	<b>30</b>	<b>35</b>
<b>10mm</b>	<b>40</b>	<b>45</b>	<b>7/16</b>	<b>45</b>	<b>60</b>
<b>12mm</b>	<b>54</b>	<b>70</b>	<b>1/2</b>	<b>65</b>	<b>90</b>
<b>14mm</b>	<b>89</b>	<b>117</b>	<b>9/16</b>	<b>95</b>	<b>130</b>
<b>16mm</b>	<b>132</b>	<b>175</b>	<b>5/8</b>	<b>135</b>	<b>175</b>
<b>18mm</b>	<b>182</b>	<b>236</b>	<b>3/4</b>	<b>185</b>	<b>280</b>

## Installation Instructions (69-5175 & 69-5276)



Raise and support front of vehicle by frame



Remove front wheels/tires



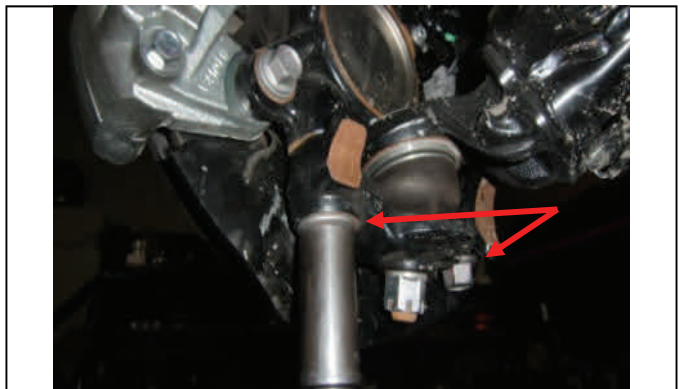
Disconnect lower sway bar end links



Remove lower strut mounting hardware



Remove upper strut mounting hardware



Remove (2) lower ball joint mounting bolts



Loosen both lower control arm pivot/alignment bolts



Swing down lower control arm and remove strut

## Installation Instructions (69-5175 & 69-5276)



Attach strut extension spacer with OE mounting hardware



Reattach upper strut mount with provided nuts and tighten



Reattach and tighten lower strut mounting hardware

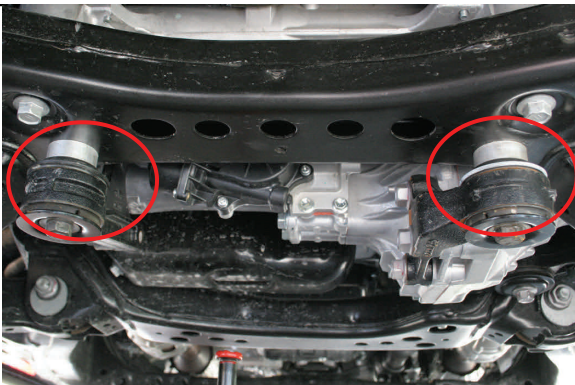


Raise lower control arm, reattach (2) ball joint mounting bolts

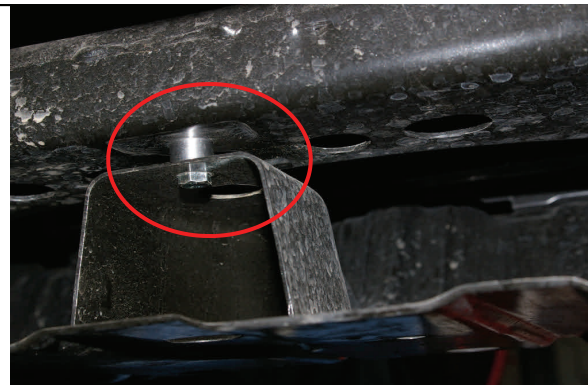


Reinstall wheels/tires, lower vehicle, reattach sway bar ends

**\*\*Tighten lower control arm bolts** check all work, test drive and have vehicle aligned  
**4WD models only:** Remove front skid plate from vehicle. Next, place a jack/support under front differential. Remove the (2) front differential mounting bolts. Lower the differential enough to allow installation of the (2) 1" spacers between the frame and the mounts. Install the provided longer bolts and nuts w/ the OE washers. Torque to factory spec. Then reinstall the factory skid plate with the provided 1/2" tall spacers and longer bolts in the front mounting locations. See photos below.



Install (2) differential spacers and tighten to spec



Install (2) skid plate spacers with new hardware

## Installation Instructions (69-5175 & 69-5276)



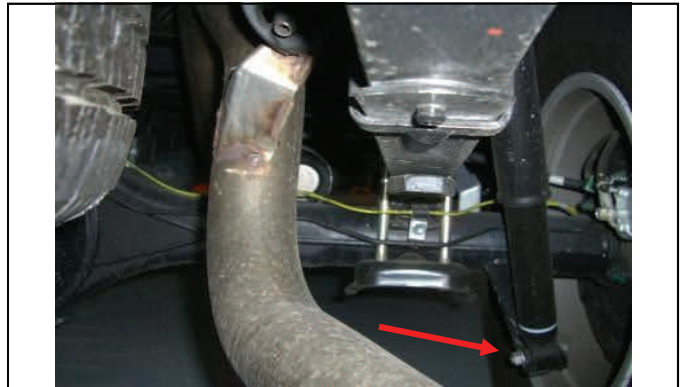
Raise vehicle securely by frame and support axle with jack..



Work on one side at a time to prevent driveline damage.



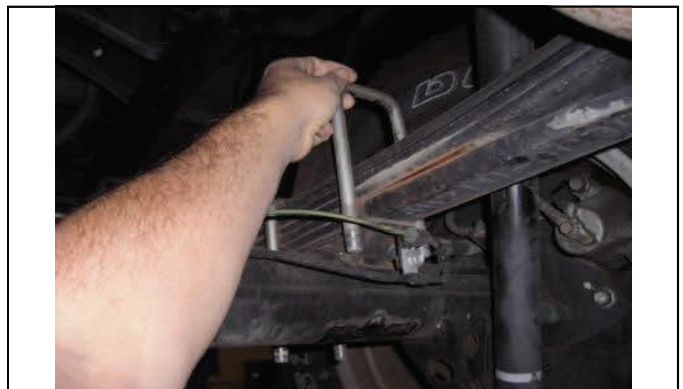
Disconnect ABS wiring brackets from axle.



Remove rear lower shock bolt and disconnect shock.



Remove u-bolt nuts and lower plate.



Carefully lower axle and remove u-bolts



Place new lift block into position between axle and leaf pack.



Raise axle and ensure locating pins are properly aligned.

## Installation Instructions (69-5175 & 69-5276)



Slide new u-bolts over leaf pack and bump stop bracket.



Attach lower mounting plate with provided hardware.



Replace shock on mount and ABS line to axle.



66-5002 pictured

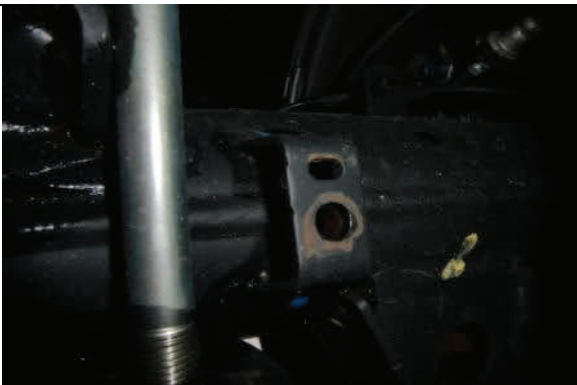
Repeat steps on opposite side and torque when completed.



**\*\*TUNDRA ONLY** using 66-5002, follow these steps.\*\*



Remove brake line bracket bolt from axle tab.



Axle tabs and brackets are different on either side.



Install provided brackets with OE and provided hardware.

## SWAY BAR SPACER INSTRUCTIONS



1. Remove the sway bar from the frame on both sides. Remove the metal saddle and leave the bushing.



2. Install aluminum spacer to the frame using the hardware supplied. Note the position of the holes.



3. Repeat for the other side and torque bolts.



4. Install sway bar saddle brackets reusing the factory hardware.



5. Repeat for the other side and torque all bolts.



6. Sway bar spacer properly installed.

## **Final Checks & Adjustments**

**Post Installation Warnings:** Once the vehicle is lowered to the ground, check all parts which have rubber or urethane components to insure proper torque. Torque wheels to factory specs. Move vehicle backwards and forwards a short distance to allow suspension components to adjust. Turn the front wheels completely left then right and verify adequate tire, wheel, brake line, and ABS wire clearance. Test and inspect steering, brake and suspension components for tightness and proper operation. Inspect brakes hoses and ABS lines for adequate slack at full extension. Failure to perform the post inspection checks may result in vehicle component damage and/or personal injury or death to driver and/or passengers. Test drive vehicle and re-check the torque of all fasteners and re-torque wheels on vehicle. Re-adjust headlamps.

**Vehicle Handling Warning:** Vehicles with larger tires and wheels will handle differently than stock vehicles. Take time to familiarize yourself with the handling of your vehicle.

### **Wheel Alignment/Headlamp Adjustment:**

**It is necessary to have a proper and professional wheel alignment performed by a certified alignment technician. Align the vehicle to factory specifications. It is recommended that your vehicle alignment be checked after any off-road driving. In addition to your vehicle alignment, for your safety and others, it is necessary to check and adjust your vehicle headlamps for proper aim and alignment**

### **Vehicle Re-Torque and Safety Inspection:**

Upon completion of all services and adjustments performed on your vehicle, and within 50 miles of driving, check to ensure all fasteners and hardware are properly torqued to specification as noted in the vehicles factory service manual or the torque chart included.