



Installing the Dana 30/44 JK

RCV Performance Ultimate CV Axles simply replace your Jeep JK's weak U-joint [axle shafts](#) with a high-strength constant velocity design. Tests prove Ultimate CV Axles to be twice as strong as OEM Jeep axle shafts, and they're just as tough at a straight angle as they are at extreme angles – where U-joints are weakest. Ultimate CV Axles also eliminate U-joint binding to allow smooth transfer power to the ground. Even if you have big tires and big power there are no worries. Ultimate CV Axles are low maintenance and operate with a smoothness you can feel – whether off road or on the street. And we back it all with a "No Questions Asked" limited lifetime warranty.



Before you begin installing the Dana 30/44 JK you will need the RCV Ultimate Axle set. This includes (2) RCV orange spherical seals, complete pre-greased short and long axle assemblies, RCV sticker, RCV grease, and a hardware package. Other tools needed for this installation are:

- Torque Wrench (20-150 lb/ft)
- ½" Drive Ratchet
- 13mm 12pt Socket
- 21mm Socket
- 36mm Socket
- 5 mm Allen Wrench
- Flathead Screwdriver or Pry Bars
- 3" Extension
- Hammer

STEP BY STEP – DANA 30/44 JK



1. Safely support your Jeep on safety stands or lift.



2. Loosen the lug nuts and remove the wheel and tire assembly.



3. Remove the spindle nut using a 36mm socket.



4. Remove (2) caliper adapter bolts using a 21mm socket. Remove the caliper and adapter together. Be sure to support the caliper with a wire or strap.



5. The rotor can now be removed.



6. Using a 13mm 12 point socket, loosen and remove (3) wheel-bearing bolts.



7. Using a 5mm allen wrench, loosen the 5mm allen head bolt.



8. Before removing the wheel bearing, remove the ABS sensor.



9. Threading the wheel bearing bolts a few turns and hitting them from the backside will allow the wheel bearing to break loose from the steering knuckle.



10. The wheel bearing and dust shield can now be removed.



11. Remove the original axle by pulling it outward through the knuckle.



12. Apply grease to the new axle spline and seal surface.

STEP BY STEP – DANA 30/44 JK



13. Hold the RCV orange seal in the knuckle.



14. Insert the axle through the knuckle and skewer the boot.



15. Place the u-shaped assembly tool against the end of the axle tube.



16. Fully seat the boot on the CV joint. A few solid hits with a soft face hammer will seat the boot.



17. Remove the boot assembly tool.



18. Pivot the knuckle back and forth to confirm there is no contact between the seal surface and the knuckle.



19. Install the dust shield and wheel bearing.



20. Tighten the ABS sensor bolt to 34-50 in*lbs.



21. Use the wheel bearing bolts provided in the hardware package.



22. Torque the wheel bearing bolts 75ft*lbs.



23. Install the caliper and adapter.



24. Torque the (2) bolts to 120 ft*lbs.

STEP BY STEP – DANA 30/44 JK



25. Reinstall the spindle nut.



26. Torque the spindle nuts to 100 ft*lbs.



27. Your RCV CV joints can be greased using a needle tip grease adapter by inserting it into the zert fitting. **We recommend 3-4 pumps using a manual grease gun every 6 months.



28. Reinstall the wheel and tire assembly. Tighten the lug nuts 92-132 ft*lbs in a criss-cross fashion.



29. The installation of the Dana 33/44 JK is now complete.

RECOMMENDED ACCESSORIES



RCV Dana 30 and 44 Axle Tube Seals
Part #: D44SK



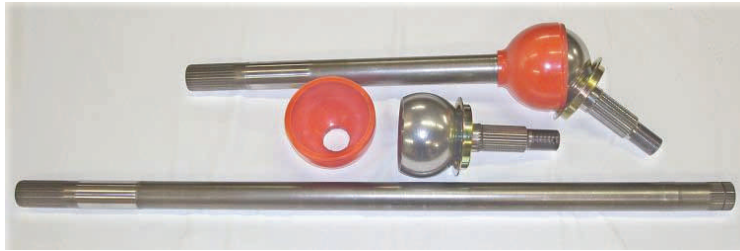
RCV Needle Grease Tip
Part #: 100-24

OTHER ULTIMATE CV AXLE APPLICATIONS

Make	Model	Year	Axle Model
Dodge			
Dodge	Ram 2500/3500	03 up	AAM 9.25
Dodge	Ram D60 Disco Axle	94-01	Dana 60
Ford			
Ford	F-150	88-79	Dana 44
Ford	F-150	09 up	Ford IFS
Ford	F-150 SVT Raptor	10 up	Ford IFS
Ford	F-250	67-79	Dana 44
Ford	F-250	02 up	Dana 60
Ford	Bronco	71-79	Dana 44
General Motors			
GM	K10&K20	77-91	GM 8.5
GM	K10&K20	71-81	Dana 44
GM	K30&V30	75-91	Dana 60
GM	2500, 3500	06 up	GM IFS
GM	1500	06 up	GM IFS
GM	Hummer H2	03-06	Hummer IFS
International Harvester			
IH	Scout	73-80	Dana 44
Jeep			
Jeep	Wrangler (YJ)	86-96	Dana 30
Jeep	Wrangler (T&LJ)	97-06	Dana 30
Jeep	Wrangler (T&LJ)	97-06	Dana 30-30T
Jeep	Wrangler Rubicon (T&LJ)	03-06	Dana 44
Jeep	Wrangler & Unlimited (JK)	07 up	Dana 30
Jeep	Wrangler Rubicon & Unlimited Rubicon (JK)	07 up	Dana 44
Jeep	CJ-6	72-81	Dana 30
Jeep	CJ-6	72-81	Dana 30-30T
Jeep	CJ-7	76-86	Dana 30
Jeep	CJ-7	76-85	Dana 30-30T
Jeep	Wagoneer w/ disc	74-92	Dana 44
Jeep	Cherokee (XJ)	85-02	Dana 30
Jeep	Grand Cherokee (WJ)	98-04	Dana 30
Jeep	Grand Cherokee (WK)	05-10	Jeep IFS
Jeep	Commander (XK)	06-10	Jeep IFS
Toyota			
Toyota	FJ Cruiser	07 up	Toyota IFS
Toyota	Land Cruiser	98-07	Toyota IFS
Toyota	4Runner	86-09	Toyota IFS
Toyota	Pickup	86-94	Toyota IFS
Toyota	Tacoma	95 up	Toyota IFS



Installing your RCV Rubicon CV Axles

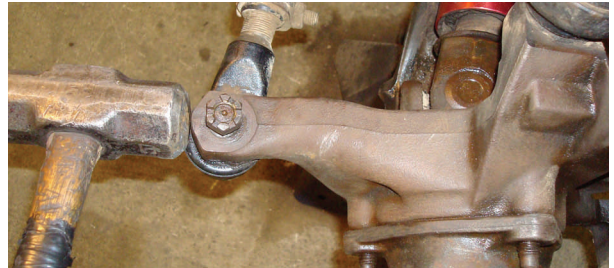


Here is a list of tools you'll need
22mm, 12 point 13mm, 19mm, 28mm & 1 7/16

These axles have a lifetime warranty against breakage.

If you modify your steering stops causing internal damage to the CV, it will not be covered under warranty.

1. To remove your tie rod ends. Loosen the nut, hit the knuckle like this a couple of times with the hammer.

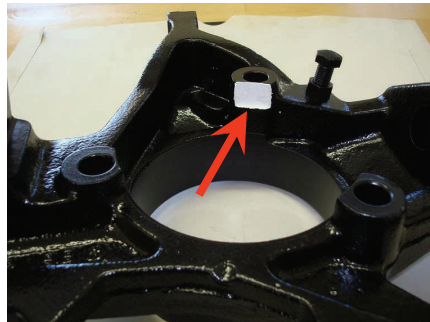


2. You must remove the knuckle to clearance for the boot. We found this is the best way to remove the knuckle, loosen the top & bottom nuts and give the knuckle a couple of hits with the hammer like this.



3. Now that you have the knuckle off, take a 4" grinder and grind about 1/16 off on the side of each bolt hole equally 1/2" down like in the picture. We also provided you with a clearance gage which must fit in the knuckle centered and flush with the top of the gage. This is to check clearance for the boot.

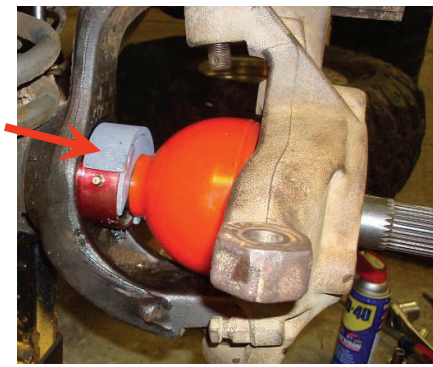
THE BOOT MUST NOT RUB



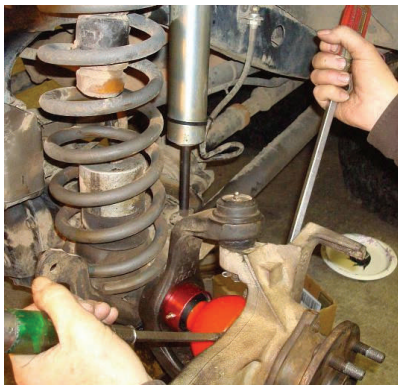
4. Put the knuckle back on. Now your ready to install the boot and axle. Slide the boot in the knuckle from the side. The boot will not fit through the uni-bearing hole. Take the shaft and slide it through the boot into the housing. It will help if you WD40 the CV for the boot to pop on. You are able to pop it in by hand. Do not hammer in.



5. Before you pop the shaft in the boot we also provide you with a special stop that fits between the housing and the boot. This stop will work with or without a tubing seal.



6. Now bolt your bearing on. Notice we provided you special bolts. Now double check for clearance. Boot must not rub. You will see that the CV has a needle tip grease fitting you only have to give a shot of grease a couple time a year. Do not over grease.



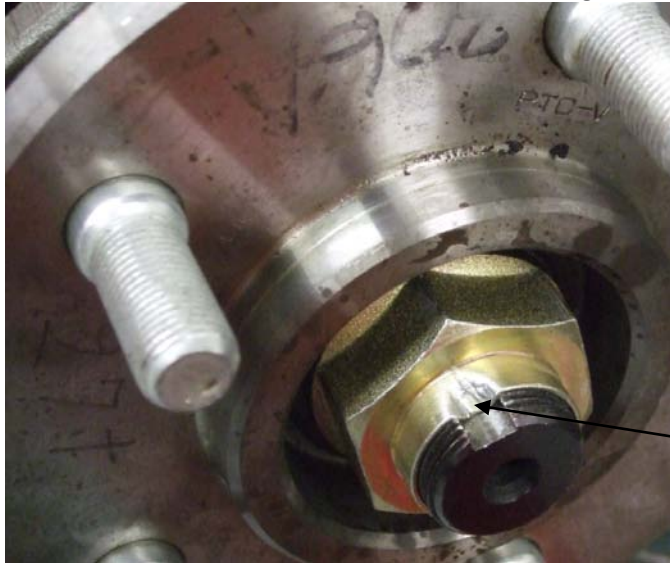
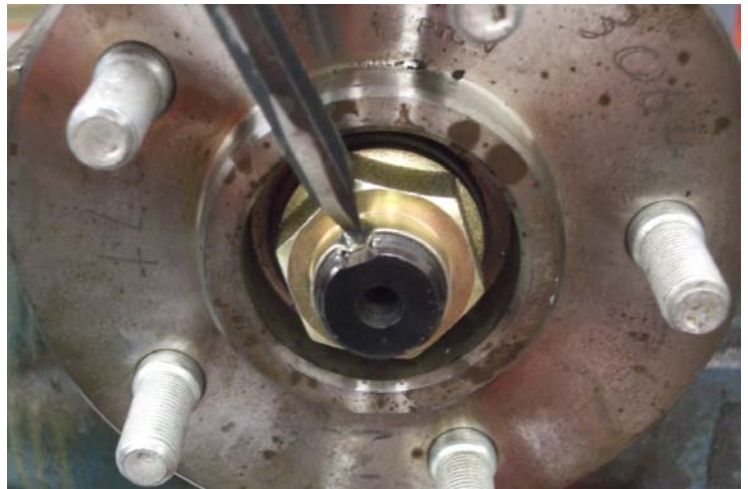
7. If you need to remove the shafts, first use two screw drivers, pry between the boot and the knuckle and the boot will pop off. Do this before removing the uni-bearing.

CVJ 44 & CVJ 30 Installation Instructions Addendum



- Bolt the unit bearing back to the knuckle.
- Slide the factory spindle washer onto the spindle.
- Torque the provided spindle nut to 175 ft-lbs.
- Stake the nut into place using a chisel to prevent it from coming loose.
- See following pictures for an example.

Staking the nut:



Staking complete