



2007-2017 JEEP WRANGLER UNLIMITED FOUR DOOR RX3



HARDWARE INCLUDED

RECOMMENDED TOOLS

- | | | |
|-------------------------------------|-------------------------------------|-------------------|
| 12- 8-1.25mm x 30mm Hex Bolt | 4- 10mm Nut Plates | 2- 13mm Wrenches |
| 12- 8mm Lock Washer | 4- 10-1.5mm x 35mm Hex Bolt | Drill & 5/16" Bit |
| 18- 8mm x 24mm OD x 2mm Flat Washer | 4- 10mm Lock Washer | |
| 6- 8mm Nuts | 4- 10mm x 34mm OD x 2mm Flat Washer | |

STEP 1- Locate the driver side step (The shorter bent side goes toward the front of the vehicle)

STEP 2- Remove any old steps or factory installed "Rock Rails" and hardware from vehicle.

STEP 3- Start installation toward the front of the driver side of the vehicle. Determine if the vehicle has an open floor panel or a threaded hole in the floor panel for the top tab on the Bracket, (**Figures 1 - 2**). Remove any insulation that may be covering the mounting locations.

STEP 4- Place the driver step close to the vehicle and follow the instructions below:

- a) **Vehicles with open mounting location:** Insert (1) 10mm Nut Plate into the large square opening in the floor panel. Line up the threaded nut with the small hole in line with the tab on the Bracket. Bolt the Bracket to the Nut Plate with (1) 10mm x 35mm Hex Bolt, (1) 10mm Lock Washer and (1) 10mm x 34mm Flat Washer. Hand tighten at this time only and do this for all three brackets.
- b) **Vehicles with factory threaded hole in floor panel:** Bolt the tab on the Bracket to the threaded hole in the floor panel with (1) 8mm x 30mm Hex Bolt, (1) 8mm Lock Washer and (1) 8mm x 24mm OD Flat Washer. Hand tighten at this time only and do this for all three brackets.

STEP 5- Line up the mounting plate on the Bracket with the factory hole in the pinch weld. Bolt the Mounting Bracket to the back of the pinch weld using (1) 8mm x 30mm Hex Bolt, (2) 8mm x 24mm OD Flat Washers, (against pinch weld), (1) 8mm x 24mm OD Flat Washers, (inside against the bracket), (1) 8mm Lock Washer, and (1) 8mm Nuts, (You may need to drill a hole in the pinch weld to enlarge an existing hole for the 8mm Hex Bolt). Hand tighten at this time only and do this for all three brackets.

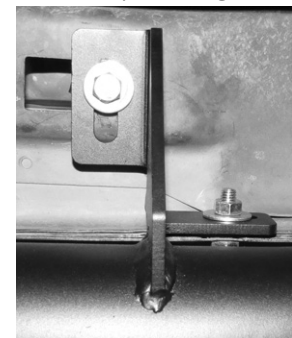
STEP 6- Once the step is installed and the bolts are hand tight, verify the fitment and alignment. Once everything is verified, torque the bolts down to 20lbs per square foot. Repeat steps for the passenger side.



Figure 1



Figure 2



Bracket