

RBP-1344B-RX3



2015-17 FORD F-150 SUPER CAB RX3

HARDWARE INCLUDED		RECOMMENDED TOOLS	
12	8mm x 24mm OD x 2mm Flat Washer		13mm Wrench
12	8mm Nylon Lock Nut		13mm Socket
12	8mm Plastic Washers		3/8 Torque Wrench
			3/8 Ratchet w/3" & 6" extensions

PASSENGER-RIGHT SIDE INSTALLATION:

STEP 1- Remove any old steps and hardware as required from truck.

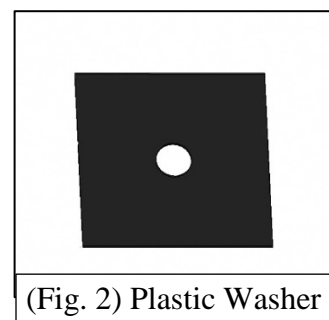
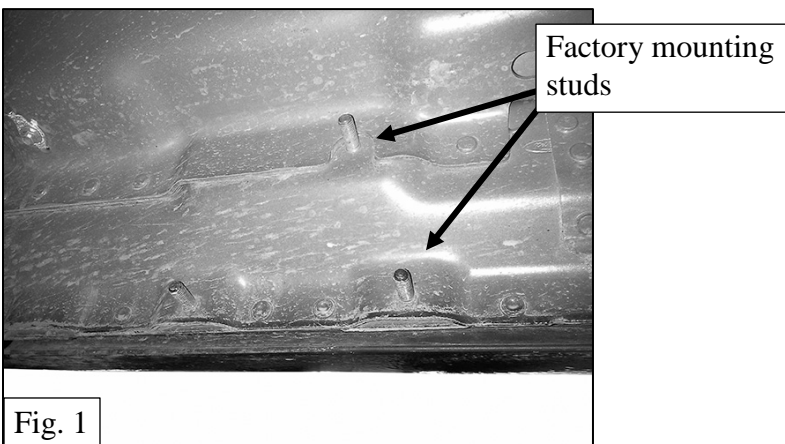
STEP 2- Select (6) 8mm Plastic Insulation Washers. Thread the Washers onto each of the factory studs in the inner side of the passenger side body panel, (Figures 1—3). **IMPORTANT:** The Plastic Washers are designed to prevent corrosion between the aluminum body panel and the steel mounting brackets. **Do not install the side steps without the Plastic Washers.**

STEP 3- Carefully unwrap and select the passenger side step, (Figure 4). With assistance, place the step over the factory threaded studs. Attach the side step to the threaded studs with (6) 8mm Flat Washers and (6) 8mm Nylon Lock Nuts, (Figures 5 & 6). Do not fully tighten hardware at this time.

STEP 4- Once the step is installed and the bolts snug tightened, check the fitment and alignment. Once everything is verified, torque the bolts down to 20ft-lbs.

STEP 5- Repeat Steps 1—4 for the driver side installation.

Periodically check installation and re-torque all fasters to specifications.



RBP-1344B-RX3

