

RBP-3248-RX7



**2009-2014 FORD F-150 SUPER CREW WITH 5.5ft SHORT
BED - RX7 WHEEL TO WHEEL**

HARDWARE INCLUDED

- 12- 8-1.25 x 25mm Hex Bolt
- 12- 8mm Lock Washer
- 18- 8mm x 22mm OD x 2mm Flat Washer
- 6- 8mm Hex Nuts
- 6- 8mm U-Nuts

RECOMMENDED TOOLS

- 2- 13mm Wrenches
- Drill & 3/8" Bit (Optional)

STEP 1- Locate the driver side step (The shorter bent side goes toward the front of the truck)

STEP 2- Remove any old steps and hardware, or remove any sealing tape and insulation that might be covering the holes in the inner panel, remove as required from truck.

STEP 3- Start installation towards the front of the driver side of the vehicle. Locate the front set of factory holes in the body panel and the (4) holes in the pinch weld under the front of the front door, (Figure 1). Insert (1) 8mm U-Nut into the rectangular opening and line up the threaded hole in the U-Nut with the round hole next to the opening. **NOTE:** Threaded nut must go towards the inside of the body panel. Repeat this step on the center, (Figure 2), and rear set of factory holes, (Figure 1).

STEP 4- Place the driver side step up against the body panel. Attach the (3) top mounting tabs on the step to the (3) U-Nuts with (3) 8mm x 25mm Hex Bolts, (3) 8mm Lock Washers and (3) 8mm Flat washers, (Figures 3 & 4). Do not tighten at this time. Attach the front and rear brackets to the pinch weld with (2) 8mm Hex Bolts, (4) 8mm Flat Washers, (2) 8mm Lock Washers and (2) 8mm Hex Nuts, (Figure 3). **Note:** Insert Hex Bolts in from the outside of the pinch weld and through the Bracket. Hand tighten at this time.

Note: The center bracket will only attach to the U-Nut in the body panel and not to the pinch weld, (Figure 5). If you wish to insert the 8mm x 25mm Hex Bolt through the bottom of the bracket for added support, drilling will be required.

Optional Drilling- Locate the center set of holes, the measurement from center to center of the holes should be 72mm (2 13/16"). Measure 36mm (1 7/16") in between both holes and place a mark on the pinch weld with a paint marker or writing utensil, (Figure 5). Try to center the mark in line with the factory holes in the bottom of the pinch weld to insure a proper alignment between the bracket and the hole in the pinch weld. Once you have verified the position of the center mark, drill a 3/8" hole for the 8mm Hex Bolt.

STEP 5- Once the step is installed and the bolts are hand tight, verify the fitment and alignment. Once everything is verified, torque the bolts down to 20lbs per square foot. Repeat steps for the passenger side.



Figure 1. Example driver/left Front or Rear



Figure 2. driver/left Center mounting location



Figure 3. Example Front or Rear installed



Figure 4. Driver/left center installed

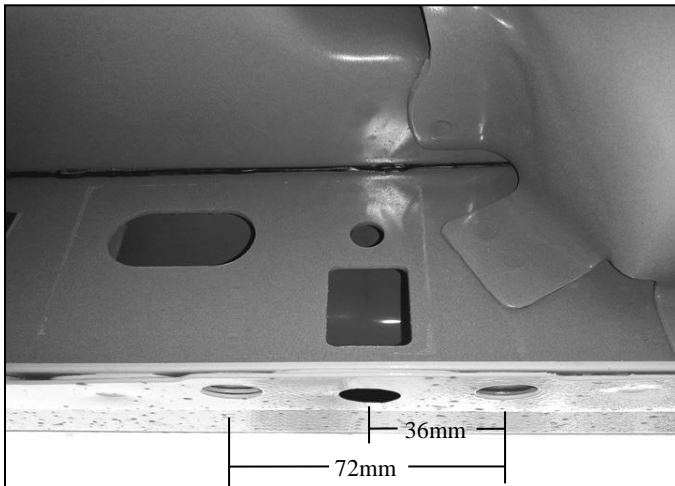


Figure 5. Optional: Mark to Drill for Center Bracket Mounting

