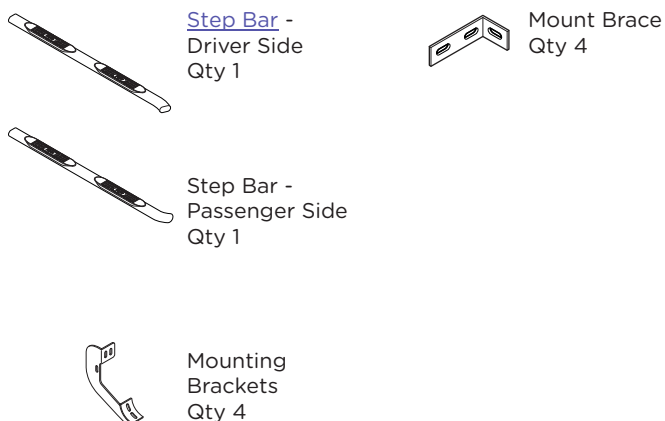
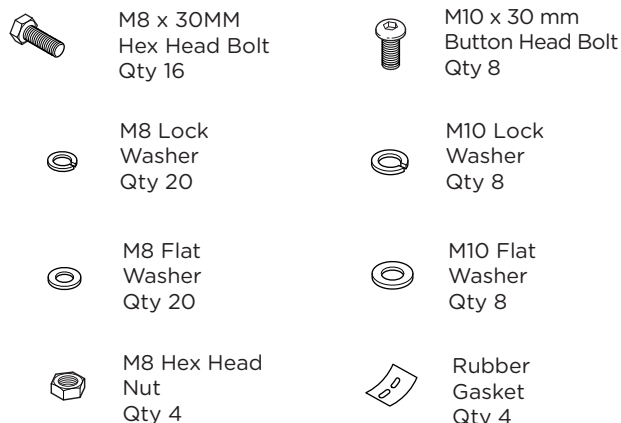
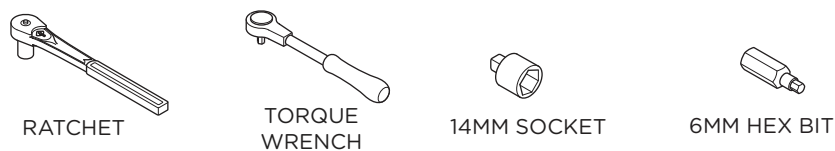


0101-0316

**3" ROUND TUBE****Raptor  
Series****Components:****Hardware:****Tools Required:****Torque Specifications:**

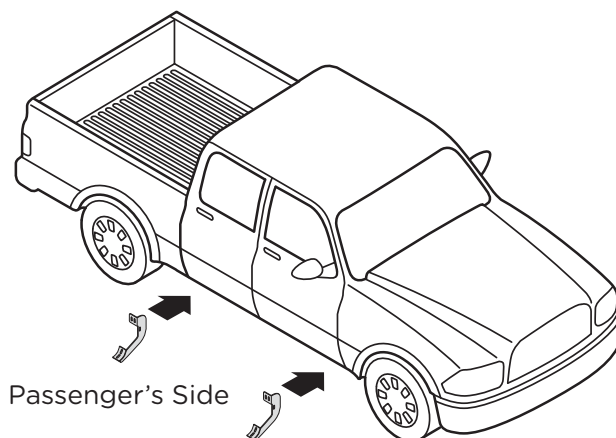
For Rocker Panel Mount Installations  
M8 through M12 bolts and nuts are set to 15-20 ft lbs.

**Note:** When installing the brackets and bars, all hardware must be left loose until all the items are attached.

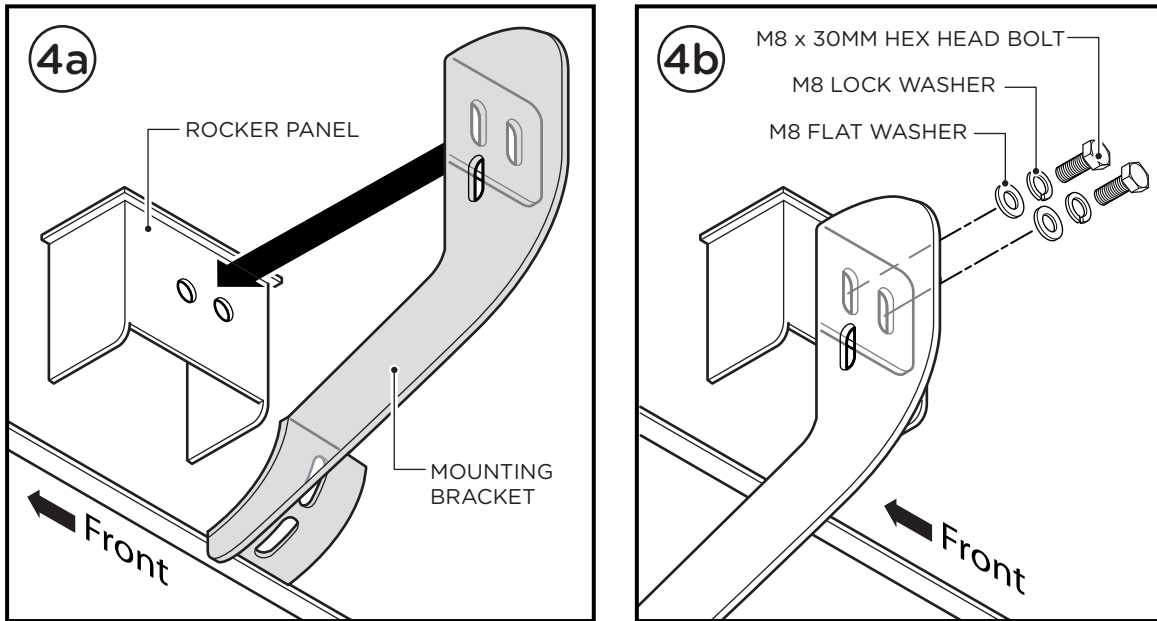
**1.** Remove all contents from the package and check stainless steel tubes for any damage. Also, verify that all components and hardware listed above are included before you begin installation.

**2.** Read installation manual and installation drawing completely. Understand all brackets and bolts before installation.

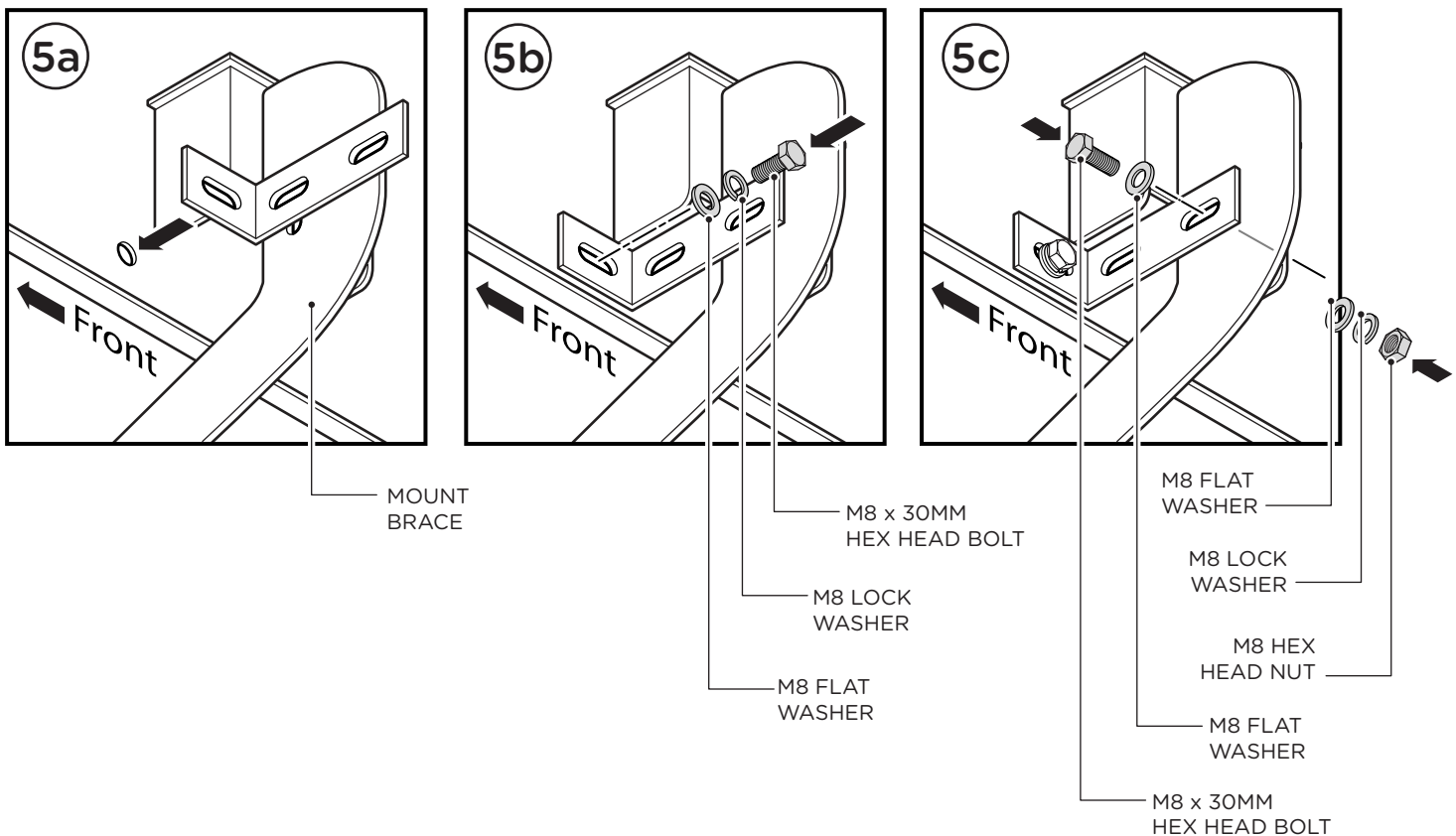
**3.** Begin installation on the passenger's side.



**4.** Align Mounting Brackets with two (2) holes found on the rocker panel (4a) and secure by using two (2) M8 x 30MM Hex Head Bolts, two (2) M8 Lock Washers and two (2) M8 Flat Washers (4b). Repeat this procedure for installation of all Mounting Brackets.



**5.** Align Mount Brace to hole in the rockel panel and fasten using one (1) M8 x 30MM Hex Head Bolt, one (1) M8 Lock Washer and one (1) M8 Flat Washer as shown in (5a) & (5b). Next, fasten the Mount Brace to the Mounting Bracket using one (1) M8 x 30MM Hex Head Bolt, one (1) M8 Lock Washer, (2) M8 Flat Washers and (1) M8 Hex Head Nut as shown in (5c).



**6.** Place the Step Bar onto the Mounting Brackets (6a) and attach using two (2) M10 x 30mm Button Head Bolts and two (2) M10 Lock Washers and (2) M10 Flat Washers per bracket (6b).

Repeat these steps for driver side installation. When all hardware is in place, everything must be tightened. See Page 1 for Torque Specifications.

