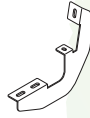
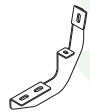
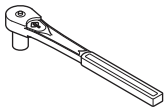
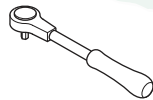


RB-0101-BK

BRACKET KIT*Raptor*
Series**Components:**Driver
Front & Center
Bracket
Qty 2Passenger
Front & Center
Bracket
Qty 2Driver Rear
Bracket
Qty 1Passenger
Rear
Bracket
Qty 1**Hardware:**M8 x 30MM
Hex Head Bolt
Qty 12M8 Hex Head Nut
Qty 12M8 Lock
Washer
Qty 24M8 Flat
Washer
Qty 24M8 U Nut Clips
Qty 12**Tools Required:**

RATCHET

TORQUE
WRENCH

13MM SOCKET



14MM SOCKET

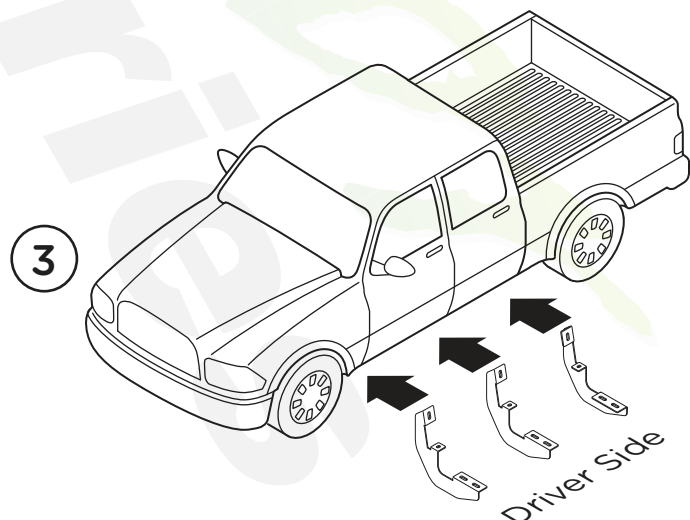
Torque Specifications:

For Rocker Panel Mount Installations

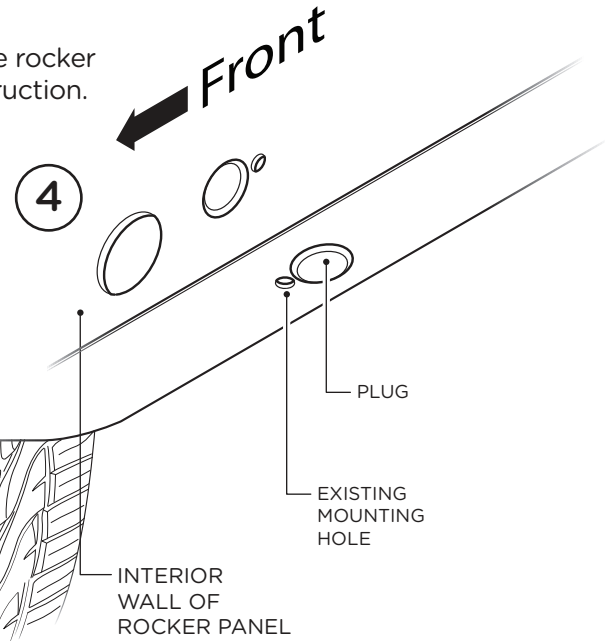
M8 through M12 bolts and nuts are set to 15-20 ft lbs.

Note: When installing the brackets and bars, all hardware must be left loose until all the items are attached.

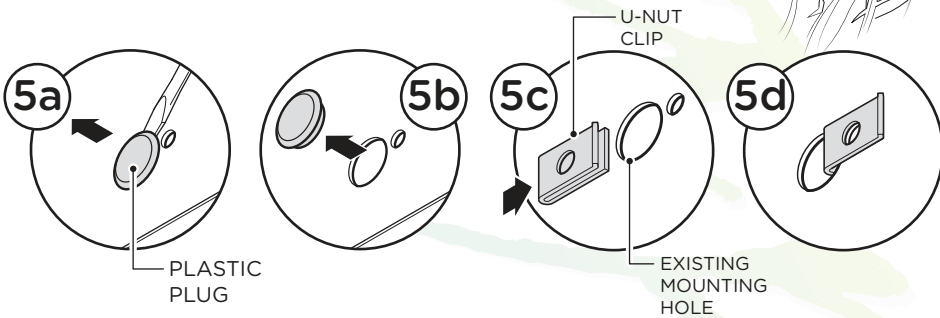
1. Remove all contents from the package and check running boards for any damage. Also, verify that all components and hardware listed above are included before you begin installation.
2. Read installation manual and installation drawing completely. Understand all brackets and bolts before installation.
3. Begin installation on the drivers's side. Front and Center Bracket Cradle face to the rear of truck and Rear Bracket Cradle faces to front of truck.



4. Existing mounting holes are located on the interior wall of the rocker panel. These mounting holes will be used per the following instruction.



5. Remove the (2) plastic plugs from all (3) mounting locations in the rocker panel. Front Center and Rear. Insert M8 U Nut Clips so that the threads are on the inside of the rocker panel.



6. Fasten each bracket using two (2) M8 x 30MM Hex Head Bolts, two (2) M8 Flat Washers, two (2) M8 Lock Washers.

