



**RANCH HAND**  
PROTECT YOUR TRUCK

# INSTALLATION INSTRUCTIONS

## DESCRIPTION

2019 RAM 2500 /3500 Sport Back  
Bumper

## PART #/s:

SBD191BLSL

## WARNING

*If your vehicle has adaptive cruise, please ensure that your adaptive cruise is working correctly once the Ranch Hand bumper is installed. Adaptive cruise may need to be cleaned or adjusted to ensure it functions properly. See your owner's manual for care of the adaptive cruise.*

Special care should be exercised in the handling, storage and installation of Kaspar Ranch Hand equipment. The actual weight of each piece of equipment will vary depending on style and model. The weight of the equipment is sufficient in volume to warrant special care, assistance and in some instances, the use of mechanical equipment during the transfer and installation of the equipment. Do not assume a position directly under the equipment during installation. Be sure the equipment has been connected and stabilized during installation to prevent falling or shifting of positions. Periodically check tightness of bolts to make sure they are tight, and unlikely to fail.

## SAFETY

- In order to help you make informed decisions about safety, we have provided installation instructions and other information.
- These instructions alert you to potential injury hazards
- Please do a job safety analysis before each task to identify potential hazards for your situation and remove/protect against them.
- You must use your own good judgment.
- Read and understand all safety precautions and instructions before installing this product.

## HAZARD

**FAILURE TO OBSERVE THESE INSTRUCTIONS COULD LEAD TO SEVERE INJURY OR DEATH.**

- Always remove jewelry and wear eye protection.
- Always use extreme caution when jacking up a vehicle for work. Set emergency brake and use tire blocks. Locate and use the vehicle manufacturers designated lifting points. Use jack stands.
- Always use appropriate and adequate care in lifting components into place.
- Always insure components will remain secure during installation and operation.
- Always wear safety glasses when installing this kit. A drilling operation will cause flying metal chips. Flying chips can cause serious eye injury.
- Always use extreme caution when drilling on a vehicle. Thoroughly inspect the area to be drilled (on both sides of material) prior to drilling, and relocate any objects that may be damaged.
- Always use extreme caution when cutting and trimming during fitting.
- Always tighten all nuts and bolts securely per installation instructions.
- Always route electrical cables carefully. Avoid moving parts, components that become hot and rough or sharp edges.
- Always insulate and protect all exposed wiring and electrical terminals.
- Always perform regular inspections and maintenance on mounts and related hardware.

## MAINTENANCE/CARE

- Periodically check and tighten all fasteners.
- Stripped, fractured, or bent bolts or nuts need to be replaced.
- After washing of the vehicle make sure to fully dry all surfaces
- For best long-term results wax and dry the entire product with a mild carnuba wax. Be sure to test the wax in an inconspicuous area first to test that the product is non aggressive.

## SENSOR DISCLAIMER

**PLEASE NOTE PARKING SENSORS ARE EXTREMELY DELICATE AND MUST BE HANDLED WITH CARE!**

Do NOT touch or shift the clear rubber grommet that surrounds the sensor face. DO NOT glue housing into place until orientation and functionality is determined.

## APPENDIX

### \*Troubleshooting Vehicle Sensors

- Start with a general inspection of the sensor fitment. Check that both the sensors and the sensor clips are fully secure and the sensors are properly centered in the housing.
- Confirm plastic housing is in the correct mounting holes. Misplaced sensor housings could compress sensor and give false readings or faults.
- Use a clean microfiber to wipe the front face of the sensor.
- Inspect connection. Be sure that the sensor is firmly seated into the harness.
- Run through several start cycles (i.e. fully turn the vehicle on and off).
- Finally, disconnect the battery to reset the sensors.

## TOOLS NEEDED

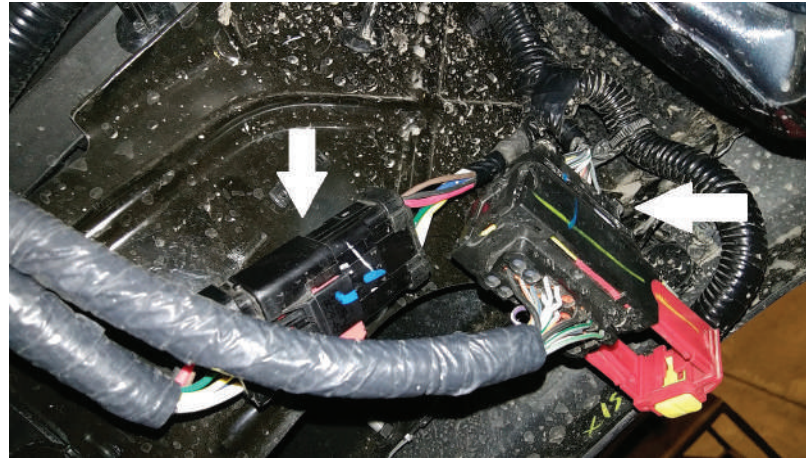
- Socket Wrench
- 15mm Deep Socket
- 1/2" Deep Socket
- Level

## INSTALLATION INSTRUCTIONS:

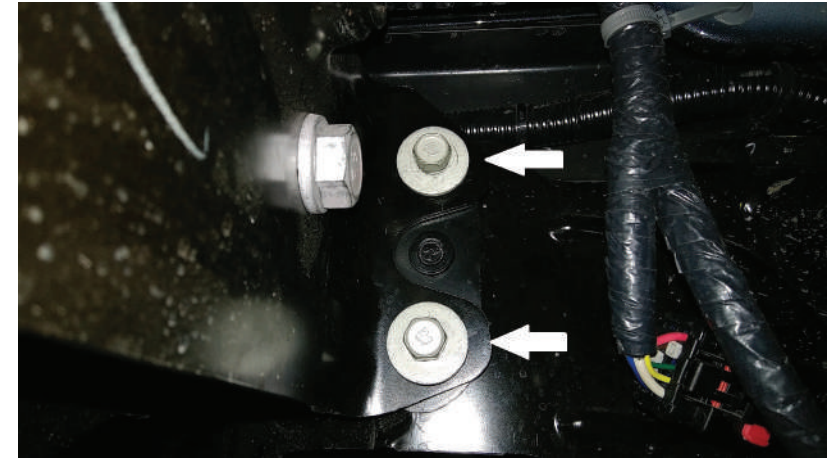
*\*NOTE: On dually models you will need to drill an extra 1" hole in the end cap for the side sensors.*

1. Begin by unplugging the connectors for the sensors, trailer plug, and license plate lights. They are located on the driver side of the bumper.
2. Remove the two 15mm bolts on each side that holds the factory bumper to the side bumper brackets.
3. Remove the two 15mm nuts that are located behind the license plate.
4. Remove the factory bumper.
5. Install the antenna module to the bracket supplied in the bolt package. Use the factory plastic clips to install. The bracket will then be mounted (using the two 15mm nuts) to the bracket on the factory receiver hitch.
6. Reinstall the license plate first and then the license plate lights. Wire them into the factory license plate light harness.
8. Install the rubber grommets into the holes in the skirt for the sensors. We recommend using a little WD-40 in the grommet to help with install of sensors.
9. Install the Ranch Hand Bumper by using the 1/2" hardware provided.
10. Center the bumper from side to side and finish tightening the bolts.
11. Install the reverse lights. Tie into the trailer plug wiring harness.

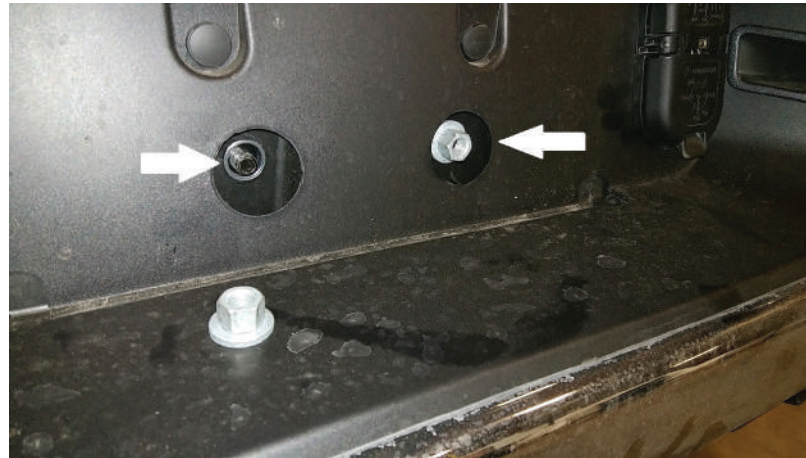
1



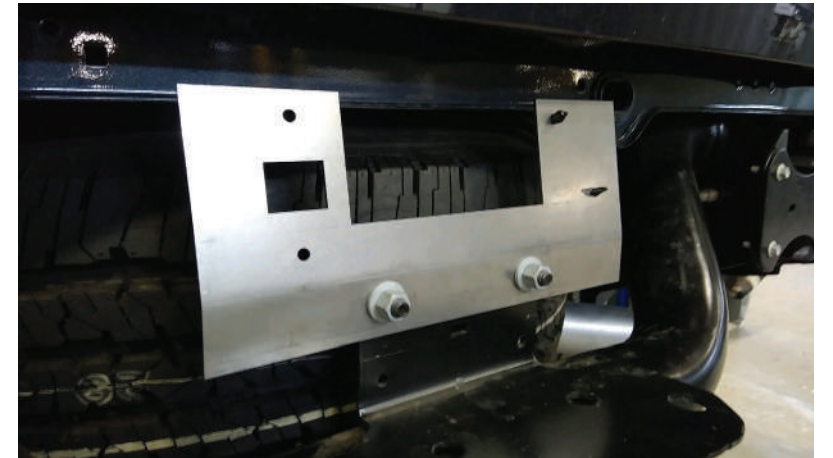
2



3



5



**2019 RAM 2500 / 3500 Sport Back Bumper - SBD191BLSL**

Check out the collection of off-road bumpers we offer.