



**RANCH HAND**  
PROTECT YOUR TRUCK

## **INSTALLATION INSTRUCTIONS**

### **SUMMIT BACK BUMPER**

#### **SBC14HBLSL: 2014 – up CHEVY/GMC 1500**

1. NOTE: IF SENSORS ARE PRESENT, DO NOT DISCONNECT!
2. Remove the license plate. Then disconnect the license plate lights.
3. Unhook and remove the trailer plug.
4. Remove two 13mm bolts located on top of the receiver hitch that connects the bumper to the receiver hitch.
5. Remove the two 21mm bolts that connect the receiver hitch to the bottom of the frame.
6. Loosen the four 21mm nuts that connect the receiver hitch to the bottom of the frame which will allow the receiver hitch to hand down.
7. Remove the two 15mm bolt from the side of the frame. One on each side.
8. Remove four 18mm nuts from the side of the frame. Two on each side.
9. To remove the bumper, push down while pulling the bumper out of the frame. This can be a little difficult. Loosening the last two bed bolts will allow more space to remove brackets from frame
10. Lay the bumper down and then remove the sensors and wiring harness.
11. Before installing the Ranch Hand bumper, you will need to tighten up the receiver hitch bolts and nuts in steps 5 & 6. Use the two metric flange nuts provided to reinstall the 21mm bolts.
12. You will need to remove the spare tire lock from the factory bumper. You will need to pry open the prongs until the lock can be removed.
13. Once the lock is removed, remove the center ring of the bracket that holds the lock in place (the part that has the prongs). This ring will be used to hold the lock in the Ranch Hand bumper. Note: Be sure to bend the prongs back into place.
14. Install the lock into the Ranch Hand bumper, Set the ring over the lock from the back side and press on.
15. Install the license plate with the ¼” bolts and nuts provided.
16. If sensors are present, install the rubber grommets in the four 1” holes in the skirts. If not, install the rubber plugs.
17. Install the Ranch Hand bumper by using the factory 18mm nuts and bolts that was removed in step 8.
18. In the front holes, use the 3/8” bolts and nuts provided.
19. Level the bumper then tighten all nuts and bolts.
20. Install the trailer plug into the large hole in the back plate.
21. Install the license plate lights and reverse lights. Wire as needed

### **WARNING**

Special care should be exercised in the handling, storage and installation of Kaspar Ranch Hand equipment.

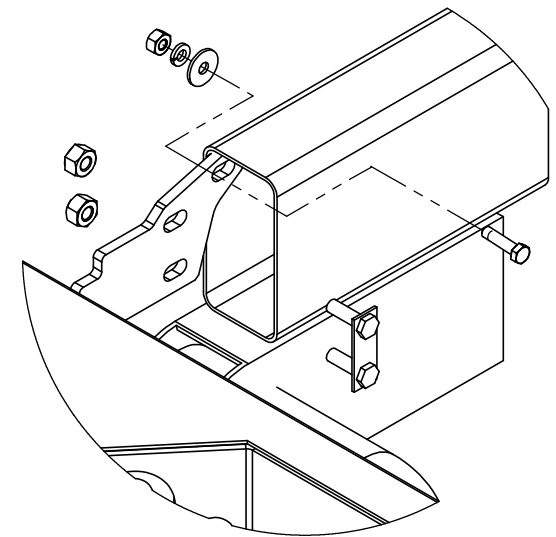
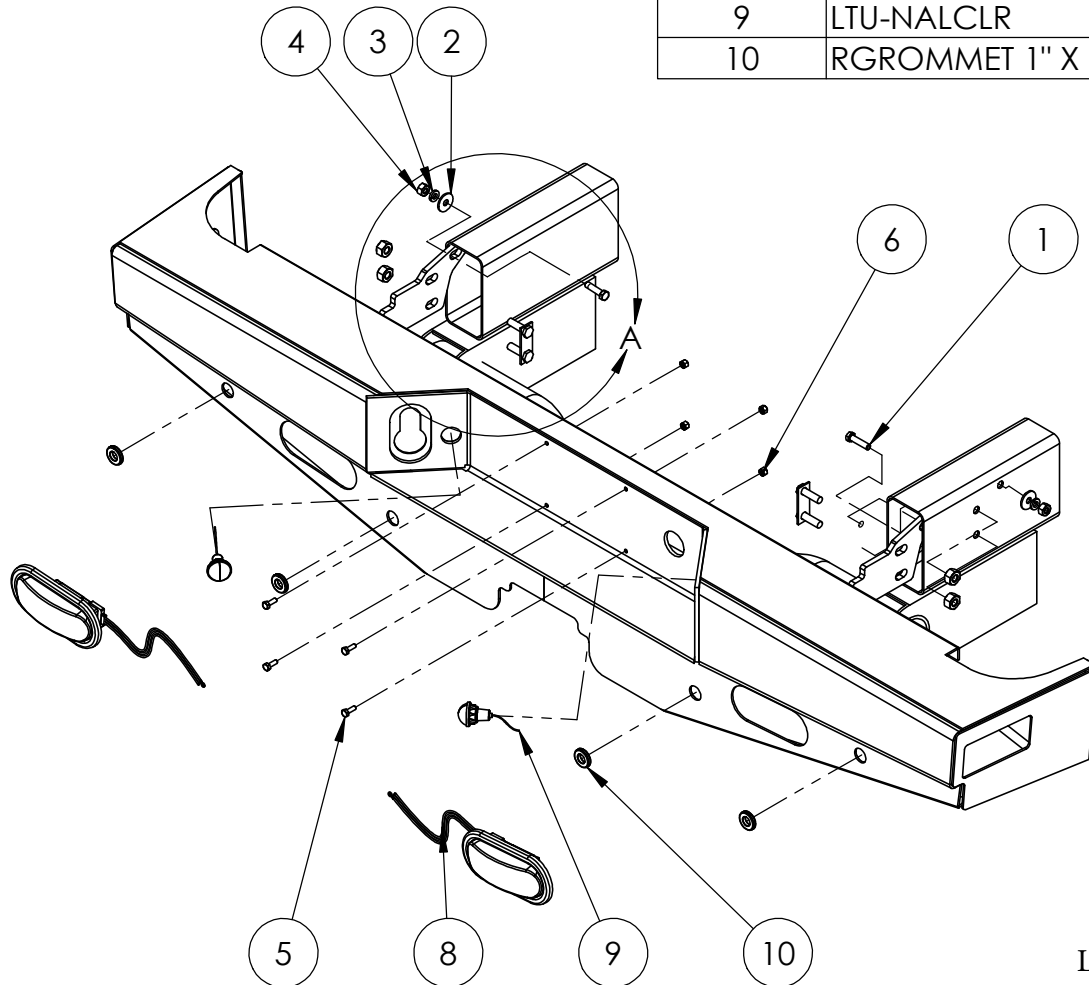
The actual weight of each piece of equipment will vary depending on style and model. The weight of the equipment is sufficient in volume to warrant special care, assistance and in some instances, the use of mechanical equipment during the transfer and installation of the equipment.

Do not assume a position directly under the equipment during installation. Be sure the equipment has been connected and stabilized during installation to prevent falling or shifting of positions.

Periodically check tightness of bolts to make sure they are tight, and unlikely to fail.

## SBC14HBLSL

ITEM NO.	PART NUMBER	DESCRIPTION	QTY.
1	BO-498	HEX HEAD BOLT 3/8"-16 X 1 1/5"	2
2	BH-153	FLAT WASHER 3/8"	2
3	BH-18	LOCK WASHER 3/8"	2
4	BN-125	NUT 3/8"-16	2
5	BO-562	ROUND HEAD BOLT 1/4"-20X3/4"	4
6	BN-36	HEX NUT 1/4"-20	4
7	BN-225	FLANGE NUT M14 X 2	2
8	LTU-NA1CLO	CLEAR OVAL LIGHT	2
9	LTU-NALCLR	LICENSE PLATE LIGHT	2
10	RGROMMET 1" X .8125	RUBBER GROMMET	4



DETAIL A  
SCALE 1 : 6

Looking for dependable off-road bumpers?  
Rely on Ranch Hand for quality and long-lasting products.