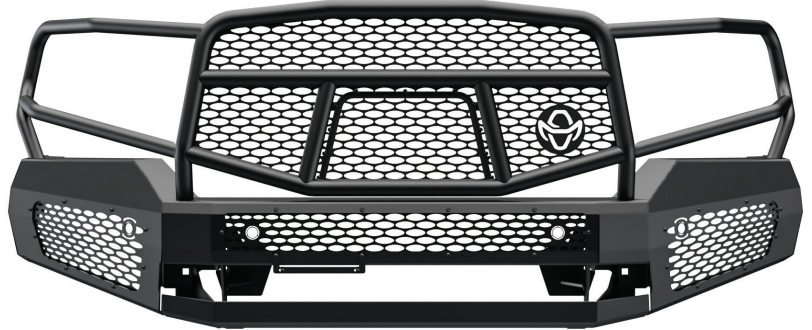


TOOLS REQUIRED

- 5/16" socket
- 3/8" socket
- 3/4" socket
- Short extension for socket
- 5/16" open-end
- 10mm socket
- 14mm deep socket
- 17mm socket
- Needle nose pliers
- Flat head screwdriver
- Plastic panel pry tool
- Silver sharpie
- Small reciprocating saw
- Angle grinder w/ flat disk pad
- Painters tape
- Dead blow hammer



Please read through the entire set of instructions before continuing with installation to familiarize yourself with the process, save time, and make sure that you have all the correct tools and parts needed to complete this installation. More detailed instructions can be found on our website.

DISASSEMBLY INSTRUCTIONS

1. With the 10mm socket and short extension, remove the two (2) 10mm screws attaching the grille to the vehicle. (Note: save the 10mm screws for step 30.)
2. Remove the two (2) push-lock clips from the outer edge of the grille. These push-lock clips are on both the passenger and driver side near the headlights. To release these clips, first lift-up on the center portion, then pull the whole clip upwards with the plastic body panel pry tool. With the clips removed, pull firmly outward on the grille shell and it will release. (Note: save the two (2) push-lock clips for step #30)
3. Use a 10mm socket for this step, as well as steps #4 - #7. Remove the nine (9) 10mm screws attaching the black plastic valance to the lower portion of the bumper cover. These screws are all located on the underside of the bumper.
4. Remove the three (3) 10mm screws attaching the black plastic valance and inner fender to the lower portion of the bumper cover. These screws are located on the underside of the bumper on both passenger and driver side of the vehicle.
5. Remove the two (2) 10mm screws at the bottom center of the bumper cover.
6. Using the 10mm socket and a flat head screwdriver, remove the screw and the twist-lock clip attaching the inner fender to the bumper cover on both passenger and driver side of the vehicle.
7. With the plastic body panel pry tool, remove the six (6) push-lock clips from the top of the bumper cover. (Note: save the six (6) push-lock clips for step #26)
8. Again, with the pry tool, reach inside the bumper cover through the wheel well and pinch the two (2) clips holding the flares to the bumper cover. Carefully pull outward on the flares to remove the first portion attached to the bumper cover still leaving the flare attached to the fender.
9. Unplug the factory fog light harness located inside the center of the bumper.

10. Stop and carefully read the following steps thoroughly before continuing!

(A.) At this point you will need to prep the bumper for cutting before removing it from the truck. For this you will use an 18" piece of painter's tape. Use the tape to extend the body line on the upper side of the fog light bezel toward the fender of the truck (see image).



Image (A.)

(B.) Using a tape measure, measure a 1" perpendicular line alongside the fog light housing bodyline and mark it with your sharpie. (see photo below)



Image (B.)

(C.) Make a mark $\frac{3}{4}$ " down from the top edge of the bumper cover. The mark should be where the bumper cover and fender meet the wheel well. (see photo below)



Image (C.)

(D.) Measure out an 18" piece of painter's tape and connect the two marks made on the bumper cover in steps #11 and #12. Note: this will be the cut line.



Image (D.)

11. Repeat steps #10 - #13 for the passenger side of the vehicle.
12. Now that the cut-lines are made, you can remove the OEM bumper cover from the vehicle. Important: You will need to pull the corner of the bumper cover below the headlights straight away from the joint at the fender, removing it from the retaining clips.
13. Use a 14mm deep socket to remove the three (3) 14mm nuts per side that hold the impact bar to the core support.
14. With needle nose pliers, remove the plastic retaining clip from the inner fender and support bar.
15. Remove the impact bar from the vehicle by tapping it with a dead blow hammer.
16. Now use a 17mm socket to remove the 17mm bolts on both ends of the core support. These bolts are located on the bottom of the core support. Leave the crash bars in place.
17. Remove the OEM fog lights and harness from the OEM bumper. Set these aside for later use.
18. Remove the fog light bezels from the OEM bumper by releasing the plastic tabs on the back side of the bumper cover.
19. Remove the lower grille insert located in the center section of the OEM bumper. This may require a flat head screwdriver to assist in removing the tabs.
20. Now the bumper is ready to be cut. (Note: we recommend placing a second piece of tape over the tape line made in step 20 and using a pen to highlight the cut line.)
21. Carefully cut along the highlighted line and around the fog light holes. (see Image E.)



Image (E.)

22. Repeat step #21 both the passenger and driver side of the vehicle.
23. After making the cut, the bottom half of the bumper will come off. Reinstall the top half of the bumper cover back onto the truck by pushing the cover into the retaining clips at the fender and using the six (6) push-lock clips from step #7.
24. Once back on the truck, use the top half of the bumper cover to make the cutline marks on the fender flares using a piece of painter's tape. (see Image F)
25. Cut along the tape line across the fender flares on both sides of the vehicle.
26. At this point you can now remove the marking tape.
27. Reinstall the Toyota grille on the front of the truck with the 10mm bolts and push pins from steps #1 and #2.
28. Trim the wheel well liner on both the passenger and driver side of the truck. Draw a line that follows the body line of the core support and then cut along the line to remove the liner.

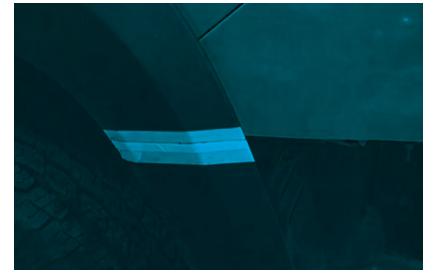


Image (F.)

MIDNIGHT PREPARATION INSTRUCTIONS

To prepare for installation, begin by laying out the included components in the box. Each part required for installation is wrapped individually and should be accounted for along with the included checklist. Please inspect all parts of your new Ranch Hand product before installing. If any parts are missing or damaged, please contact the Ranch Hand Customer Service Team, customerservice@ranchhand.com, immediately before proceeding with installation.

1. Begin by taking the bumper out of the box and position the bumper on the ground, just as it would sit on your truck/SUV.
2. Locate the passenger and driver side fog light inserts and fog light brackets. *Note: These must be installed at the same time as they share two of the provided bolts, washers, and bolt locations.
3. Place the fog light insert through the back of the bumper. Using a 5/32" Allen wrench, Allen key, or hex key and 7/16" wrench secure the two bottom and two outer edge holes with the provided 1/4" socket button head bolts and Keps nut.
4. Place the fog light bracket in position over the fog light insert. Secure both the fog light inserts and bracket to the bumper using the 1/4" socket button head bolts and Keps nuts (8x per side).
5. Repeat this step for both the passenger and driver side of the bumper.
6. Place the center fog light insert, from the inside, in the middle of the bumper and begin securing the 1/4" socket button head bolts and Keps nuts. Secure eight of the holes, leaving the center bottom two holes as is without bolts. These will be used to attach the license plate later.
7. Place the removable camera insert on the grille guard from the inside and attach with the 1/4" socket button head bolts and Keps nuts. *Note: If your vehicle comes equipped with a front mounted camera please skip this step.
8. Install fog light with brackets
9. Use the OEM fog lights that were removed and install them into the Ranch Hand OEM bracket using four 1/4-20" bolts. Be aware that the lights are unique to the driver and passenger side. Check each light before bolting them onto each bracket.
10. The bracket may need adjustments for the mounting holes to align. Minor manipulations are encouraged as the bracket is pliable and able to be pushed and pulled to fit.
11. Use 5/16 hardware to mount the RH OEM fog light bracket into the light pod mount. Secure with bolts (two on each side) and tighten by hand.
12. Take the OEM fog light wiring harness and run through the holes in the bracket along the length of the bumper.

FOR VEHICLES WITH SENSORS

1. If your vehicle has OEM front parking sensors, carefully remove the sensors from the OEM bumper.
2. Using the grommets provided in the included bolt pack, reinstall the OEM sensors. Place the grommet inside the hole directly on the insert. Once it is in place, apply WD-40 around the inside of the grommet to help guide the sensor into place without damaging it. Push the sensor through the grommet from the back side of the insert.
3. If sensors are unable to fit into the sensor hole on the insert, knock out the hole entirely and continue by using the provided large diameter grommets.
4. Take the sensor pigtail/wires that were removed from the OEM bumper and route the wiring harness from sensor to sensor on the bumper. Route the wires through the mounting bracket using the holes located on the sides of both brackets. Be sure to avoid leaving the wiring harness on top of the bracket.
5. If using the OEM fog lights, use the provided OEM fog light mounting bracket (specific to your vehicle) and bolt it directly into the light pod mount.
6. Any and all aftermarket products that you plan to attach to the bumper, including lightbars, should be installed at this time for ease of installation.

INSTALLING THE MIDNIGHT FRONT BUMPER

Refer to the provided schematic diagram that indicates proper placement of bolts and their locations. The following steps are recommended to be performed with at least one partner; we recommend having two partners to assist. One to help hold the bumper in place and the other to guide the bolts through the brackets and into the frame.

1. With one person supporting each side, line the bumper's mounting plate up with the mounting bracket. A third person should be underneath the vehicle to temporarily tighten each of the bolts to secure the bumper to the mounting bracket per mounting diagram.
2. With two people still supporting each side of the bumper, adjust the bumper so that there is an even amount of space along the grille, the headlights, and all the way across the front of the truck. Once the bumper is in place, continue by tightening all the mounting hardware.
3. Reconnect any OEM wiring harnesses disconnected when removing the OEM bumper. This includes fog light wiring harnesses or sensor wiring harnesses. All must be plugged back into OEM location on truck. It may be necessary to use zip ties to secure loose wiring.

ADA INSTALLATION

1. See packing list to identify ADA for installation.
2. Have one person hold the ADA bar in place while the other places bolts through the bolt holes and hand tighten the nuts (very similar to step 1 above titled, "Installing the Midnight Front Bumper). DO NOT over-tighten the bolts, otherwise step 2 will become difficult.
3. Adjust the placement of the ADA until it is flush and aligned with the rest of the bumper. Once in place, firmly tighten the bolts.

*Note: If installing a winch tray (packaged/sold separately), do not install the ADA bar and please refer to the winch installation instructions at this time.

LICENSE PLATE BRACKET INSTALLATION

1. Retrieve the U-shaped license plate bracket as well as the four ¼" socket button head bolts and Keps nuts.
2. Attach the top of the U-bracket to the grille guard using the two ¼" socket button head bolts bolts and Keps nuts.
3. Attach the license plate to the bottom of the U-bracket using the two ¼" socket button head bolts and Keps nuts bolts.
4. Check and tighten all mounting fasteners.

