

RANCH HAND

INSTALLATION INSTRUCTIONS

2007-13 TOYOTA TUNDRA GRILL GUARD – GGT07HBL1

2014-up TOYOTA TUNDRA GRILL GUARD – GGT14HBL1

NOTE: WILL NOT FIT 07-UP SEQUOIA

1. Remove factory tow hooks or recovery hooks.
2. Install bottom mounting brackets and reinstall tow hooks or recovery hooks. *There is a driver and passenger side.*
3. Remove the top outer bumper nut. Install the top mounting brackets. *There is a driver and passenger side.* You can install them through the rectangular openings in the bumper. Add a washer and then reinstall the factory nut.
4. NOTE: On the 2010 models, you will need to cut off the upper vertical tab in order to install the top brackets. *See drawing for location.*
5. NOTE: On 2014 models, you will need to cut out the outer section of the plastic bumper insert. *See photo. Picture shows insert off truck for clarity. The taped section is what needs to be cut out.*



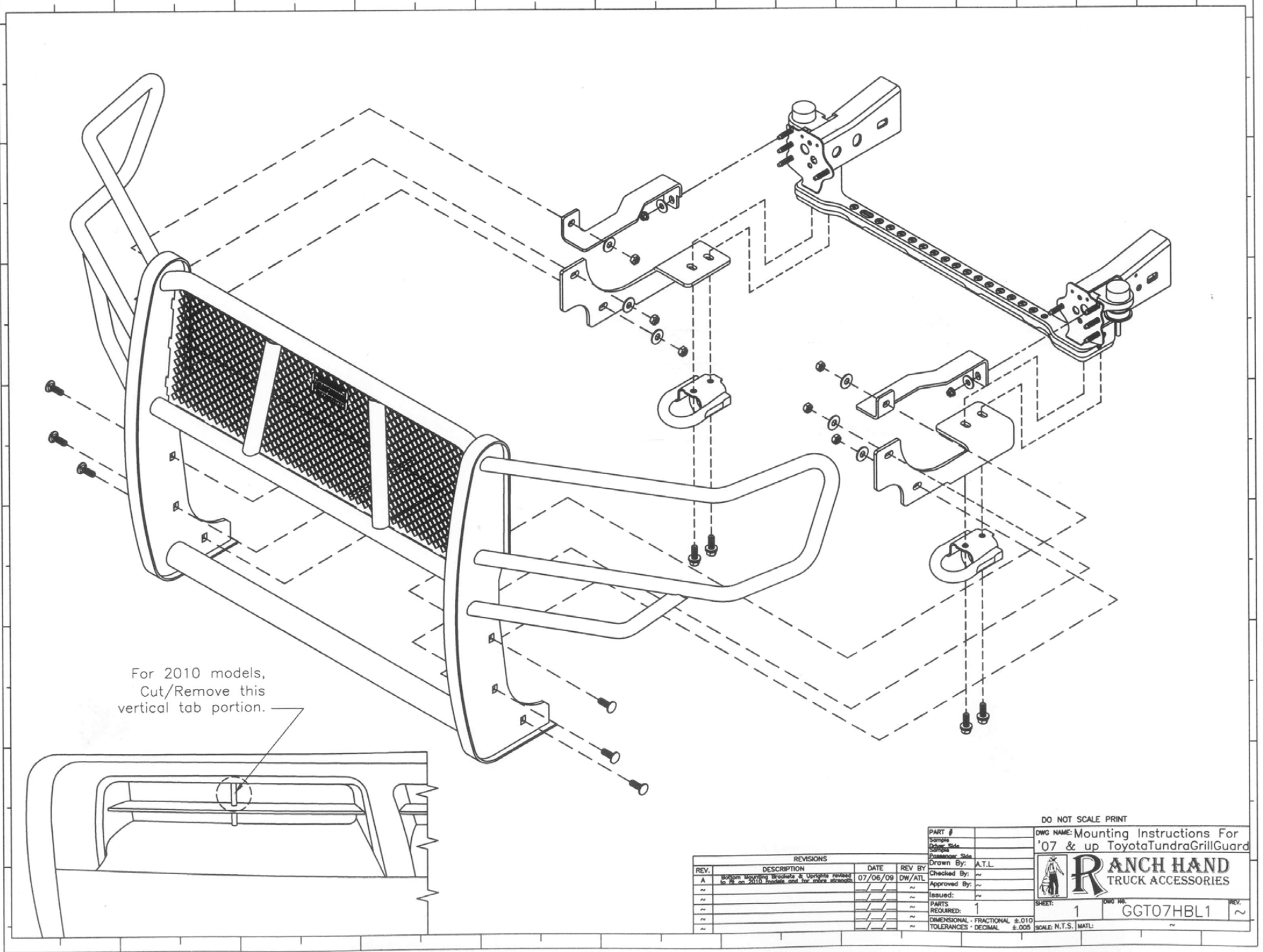
6. Mount the grill guard to the bottom mounting brackets with four black carriage bolts. The brackets will be to the inside of the grill guard.
7. Mount the top mounting brackets to the grill guard with two black carriage bolts. These brackets will be to the inside of the grill guard.
8. Center and level the grill guard. Tighten all bolts. You can adjust the grill guard from side to side by loosening the bottom mounting bracket bolts.
9. On 2007-13 models, open the hood slowly and make sure the grille clears the grill guard.
10. **MAKE SURE ALL NUTS AND BOLTS ARE TIGHT!**

-----WARNING-----

Special care should be exercised in the handling, storage and installation of Kaspar Ranch Hand equipment. The actual weight of each piece of equipment will vary depending on style and model. The weight of the equipment is sufficient in volume to warrant special care, assistance and in some instances, the use of mechanical equipment during the transfer and installation of the equipment.

Do not assume a position directly under the equipment during installation. Be sure the equipment has been connected and stabilized during installation to prevent falling or shifting of positions.

Periodically check tightness of bolts to make sure they are tight, and unlikely to fail.



DO NOT SCALE PRINT

PART # _____
 Same as _____
 Driver Side _____
 Passenger Side _____
 Drawn By: A.T.L.
 Checked By: _____
 Approved By: _____
 ISSUED: _____
 PARTS REQUIRED: 1
 DIMENSIONAL - FRACTIONAL ±.010
 TOLERANCES - DECIMAL ±.005

DWG NAME: Mounting Instructions For
 '07 & up ToyotaTundraGrillGuard

RANCH HAND
 TRUCK ACCESSORIES

SHEET: 1 OF 1
 DWG NO. GGT07HBL1
 REV. ~

REV.	DESCRIPTION	DATE	REV BY
A	Bottom Mounting Bracket & Uprights revised to fit on 2010 models and for make straight	07/06/09	DW/ATL
~			
~			
~			
~			