

RANCH HAND

INSTALLATION INSTRUCTIONS **2014 - 15 GMC 1500 GRILL GUARDS** **PART # GGG14HBL1**

Note: In order to make this grill guard work with sensors, you will need to use the USCBP.

**** Included in your bolt pack are tabs to cover the two center sensors on 2014 and 2015 GM vehicles equipped with front park assist sensors. Due to the inconsistency of the sensor function, once an aftermarket Grill Guard is installed we have found this to be an effective means of eliminating errors in the system. This in no way is intended to disrupt the function of the Park Assist system, only to prevent the system from recognizing the grill guard as an obstacle and allow you to gain the protection of the grill guard. ****

1. Remove the plastic cover from around the tow hooks. ***You will have to cut off.***
2. On trucks without tow hooks, you will need to cut an access hole to slide the mounting brackets into place. Starting on the passenger side, if tow hooks are present, remove the back tow hook bolt and remove the nut from the front bolt. Slide the front tow hook bolt out as far as you can. Take the Frame-bracket that has the welded angle iron on top and slide it against the frame. The angle iron will sit on the top of the frame. Reinstall the tow hook bolts. If no tow hooks, use ½" x 1 ½" to install.
3. Slide the mounting bracket through the outer opening of the tow hook area. Use two ½" x 1 ½" bolts to install. Before tightening, make sure the bracket is pushed in the up position. The bracket will touch the front tow hook bolt. ***Note: On the front bolt you will NOT use a washer. See photos***

Passenger Side



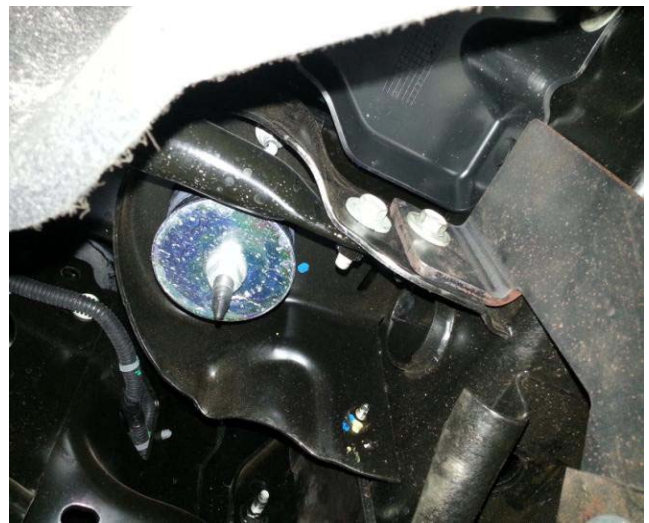
Driver Side



4. Remove the inner bolt (the one closest to the frame) of the bumper side support bracket. Mount the bottom formed bracket parallel to the frame then reinstall the factory bolt. *See photo*

Passenger Side

Driver Side



5. Install the bottom mounting bracket to the formed bracket by using two ½” x 1 ½” bolts. Allow a little movement.
6. Remove the bottom bumper bolt and install the support bracket. Attach the other end to the bottom mounting bracket by using one ½” x 1 ½” bolt. *See photo*

Passenger Side



Driver Side



7. Install the grill guard to the mounting brackets by using four black carriage bolts. Level and tighten bolts. Line up the hole of the bottom mounting bracket with the bottom hole in the grill guard. Install another black carriage bolt and tighten.
8. **MAKE SURE ALL NUTS AND BOLTS ARE TIGHT.**

----- **WARNING** -----

Special care should be exercised in the handling, storage and installation of Kaspar Ranch Hand equipment. The actual weight of each piece of equipment will vary depending on style and model. The weight of the equipment is sufficient in volume to warrant special care, assistance and in some instances, the use of mechanical equipment during the transfer and installation of the equipment. Do not assume a position directly under the equipment during installation. Be sure the equipment has been connected and stabilized during installation to prevent falling or shifting of positions. Periodically check tightness of bolts to make sure they are tight, and unlikely to fail.