

# RANCH HAND

## **INSTALLATION INSTRUCTIONS**

### **2005 - `07 FORD SUPER DUTY / 2005 EXCURSION PART # GGF051BL1 (GRILL GUARD)**

1. Remove the four 18mm bumper bolts. Install the grill guard by using the same 18mm bolts. Hand tighten.
2. Place the bottom mounting bracket between the top side of the grill guard strap and the bottom side of the blocker beam. Use the ½” x 1 ½” bolts to install. Hand tighten.
3. Center the grill guard from side to side and make sure grill guard is level. Tighten the four 18mm bolts and then the ½” bolt.
4. **MAKE SURE ALL NUTS AND BOLTS ARE TIGHT!**

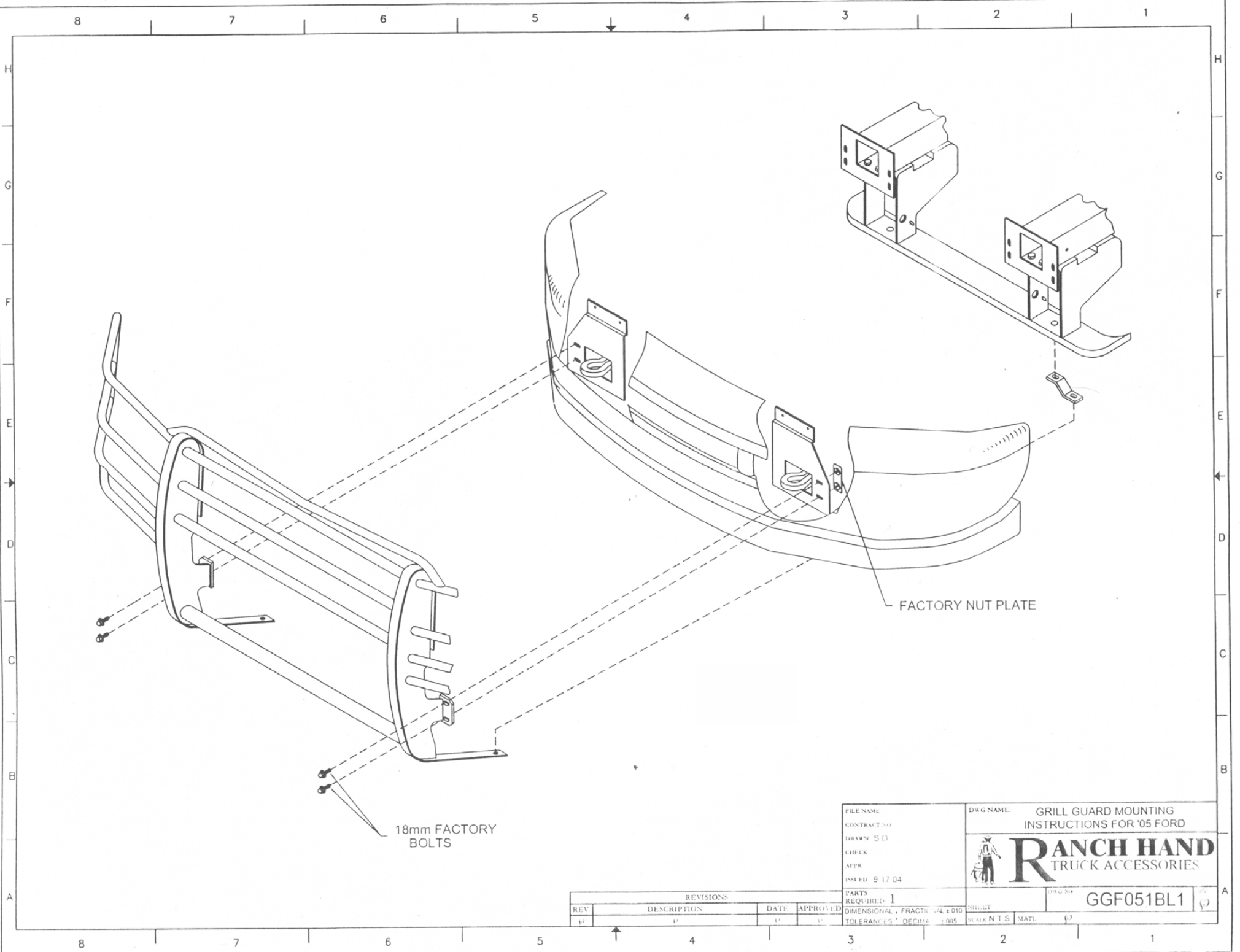
#### **----- WARNING -----**

Special care should be exercised in the handling, storage and installation of Kaspar Ranch Hand equipment.

The actual weight of each piece of equipment will vary depending on style and model. The weight of the equipment is sufficient in volume to warrant special care, assistance and in some instances, the use of mechanical equipment during the transfer and installation of the equipment.

Do not assume a position directly under the equipment during installation. Be sure the equipment has been connected and stabilized during installation to prevent falling or shifting of positions.

Periodically check tightness of bolts to make sure they are tight, and unlikely to fail.



18mm FACTORY BOLTS

FACTORY NUT PLATE

REVISIONS			
REV	DESCRIPTION	DATE	APPROVED

FILE NAME  
 CONTRACT NO  
 DRAWN S D  
 CHECK  
 APPR  
 ISSUED 9 17 04

DWG NAME: GRILL GUARD MOUNTING INSTRUCTIONS FOR '05 FORD



PARTS REQUIRED: 1  
 DIMENSIONAL: FRACTIONAL ± 0.10  
 TOLERANCES: DECIMAL ± 0.05  
 SHEET: GGF051BL1  
 SCALE: N T S NATL