

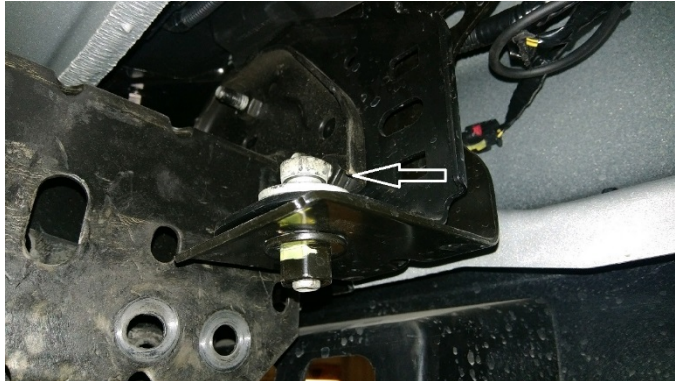


**RANCH HAND**  
PROTECT YOUR TRUCK

**INSTALLATION INSTRUCTIONS**  
**2019 - up CHEVY 1500 GRILL GUARD**  
**PART # GGC19HBL1**

**\*\*\* FOR VEHICLES WITH SENSORS, YOU WILL NEED TO USE PSC19HBL1 \*\*\***

1. On models with tow hooks, loosen the 18mm bumper bolt, driver side only. This bolt is in the way of the tow hook bolt.



2. Remove the tow hook along with foam shield.



3. Cut a 2 1/2" wide x 3" tall rectangle opening. This is for the mounting brackets.



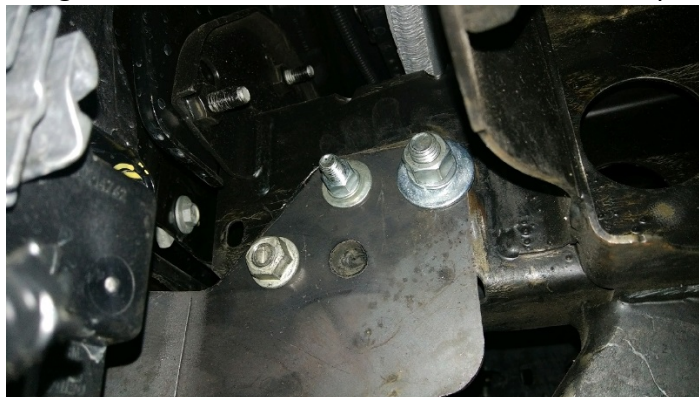
- Slide the 5" tab w/the bolts through the top holes of the frame.



- From the back side, slide the mounting bracket through the 2 1/2" x 3" opening and over the bolts. Use 3/8" and 1/2" washers, lock washers and nuts to install.



- Reinstall the tow hooks. Use the factory tow hooks. If there are no tow hooks present, use 1/2" bolts. Also, at this time tighten the 18mm bolt that was loosened in step 1.



- Repeat steps 2-6 on the passenger side.

8. For installation of the top mounting brackets, remove the factory grille. Open the hood and remove the hood release latch by removing two T15 screws.



9. Remove the ten plastic clips holding the plastic shield located above the grille.



10. Remove the factory grille by removing the four 10mm screws on top and pulling on the grill clips.

11. Remove the 13mm outer top bumper bolt. Install bracket then reinstall bolt.



12. Reinstall the grille, plastic shield and hood release latch.

13. Install the grill guard by using the 1/2" carriage bolts, washers and lock nuts provided.

14. Level grill guard and tighten all bolts and nuts. You may have to loosen the mounting bracket bolts to help with leveling.