



RANCH HAND
PROTECT YOUR TRUCK

INSTALLATION INSTRUCTIONS

DESCRIPTION

2019 RAM 2500 & 3500 Legend
Front Bumper

PART #/s:

FBD191BLR / FBD191BLRC /
BTD191BLR / FSD191BL1 /
FSD191BLIC / BSD191BL1

WARNING

If your vehicle has adaptive cruise, please ensure that your adaptive cruise is working correctly once the Ranch Hand bumper is installed. Adaptive cruise may need to be cleaned or adjusted to ensure it functions properly. See your owner's manual for care of the adaptive cruise.

Special care should be exercised in the handling, storage and installation of Kaspar Ranch Hand equipment. The actual weight of each piece of equipment will vary depending on style and model. The weight of the equipment is sufficient in volume to warrant special care, assistance and in some instances, the use of mechanical equipment during the transfer and installation of the equipment. Do not assume a position directly under the equipment during installation. Be sure the equipment has been connected and stabilized during installation to prevent falling or shifting of positions. Periodically check tightness of bolts to make sure they are tight, and unlikely to fail.

SAFETY

- In order to help you make informed decisions about safety, we have provided installation instructions and other information.
- These instructions alert you to potential injury hazards
- Please do a job safety analysis before each task to identify potential hazards for your situation and remove/protect against them.
- You must use your own good judgment.
- Read and understand all safety precautions and instructions before installing this product.

HAZARD

FAILURE TO OBSERVE THESE INSTRUCTIONS COULD LEAD TO SEVERE INJURY OR DEATH.

- Always remove jewelry and wear eye protection.
- Always use extreme caution when jacking up a vehicle for work. Set emergency brake and use tire blocks. Locate and use the vehicle manufacturers designated lifting points. Use jack stands.
- Always use appropriate and adequate care in lifting components into place.
- Always insure components will remain secure during installation and operation.
- Always wear safety glasses when installing this kit. A drilling operation will cause flying metal chips. Flying chips can cause serious eye injury.
- Always use extreme caution when drilling on a vehicle. Thoroughly inspect the area to be drilled (on both sides of material) prior to drilling, and relocate any objects that may be damaged.
- Always use extreme caution when cutting and trimming during fitting.
- Always tighten all nuts and bolts securely per installation instructions.
- Always route electrical cables carefully. Avoid moving parts, components that become hot and rough or sharp edges.
- Always insulate and protect all exposed wiring and electrical terminals.
- Always perform regular inspections and maintenance on mounts and related hardware.

MAINTENANCE/CARE

- Periodically check and tighten all fasteners.
- Stripped, fractured, or bent bolts or nuts need to be replaced.
- After washing of the vehicle make sure to fully dry all surfaces
- For best long-term results wax and dry the entire product with a mild carnuba wax. Be sure to test the wax in an inconspicuous area first to test that the product is non-aggressive.

SENSOR DISCLAIMER

PLEASE NOTE PARKING SENSORS ARE EXTREMELY DELICATE AND MUST BE HANDLED WITH CARE!

Do NOT touch or shift the clear rubber grommet that surrounds the sensor face. DO NOT glue housing into place until orientation and functionality is determined.

APPENDIX

*Troubleshooting Vehicle Sensors

- Start with a general inspection of the sensor fitment. Check that both the sensors and the sensor clips are fully secure and the sensors are properly centered in the housing.
- Confirm plastic housing is in the correct mounting holes. Misplaced sensor housings could compress sensor and give false readings or faults.
- Use a clean microfiber to wipe the front face of the sensor.
- Inspect connection. Be sure that the sensor is firmly seated into the harness.
- Run through several start cycles (i.e. fully turn the vehicle on and off).
- Finally, disconnect the battery to reset the sensors.

TOOLS NEEDED

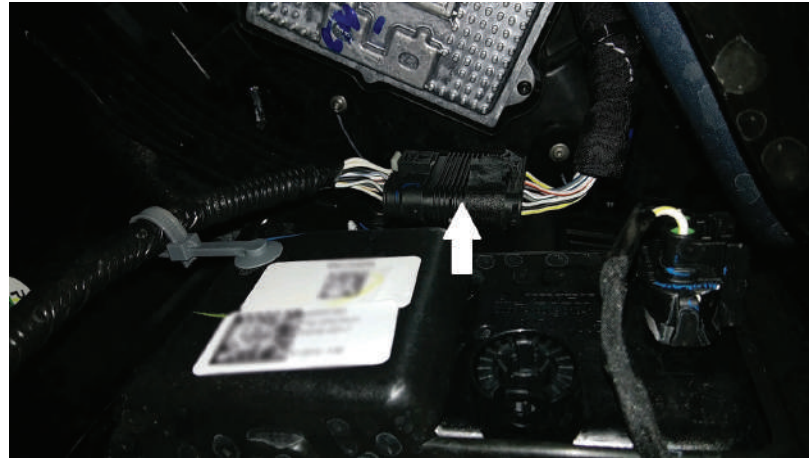
- Socket Wrench
- 1/2" Deep Socket
- 3/8" Deep Socket
- 24mm Socket
- 18mm Socket
- Level

INSTALLATION INSTRUCTIONS:

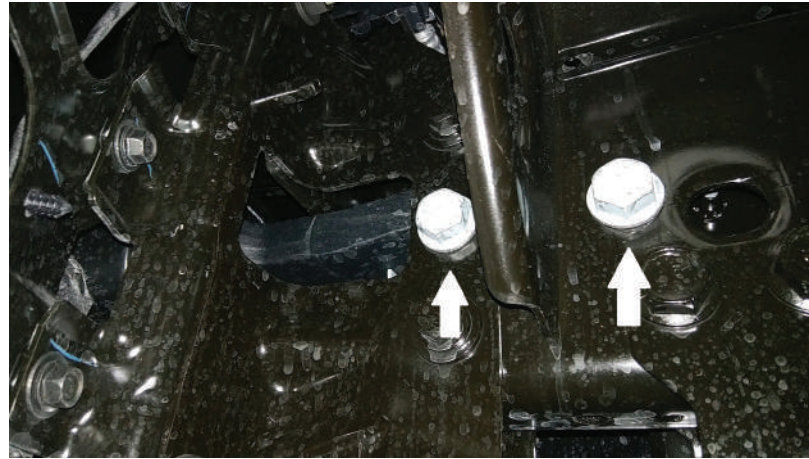
1. Begin by locating the fog light / sensor wiring harness. The wiring harness is located just above the driver side fog light.
2. Remove the factory tow hooks by taking off the two 24mm bolts.
3. Uninstall the factory bumper by removing the two 18mm bolts.
3. Remove the fog lights and mount them to the fog light brackets (LBD19HBP).
4. Remove the sensors and wiring harness from the factory bumper and install them in the Legend Front Bumper replacement. Please remember to use the provided rubber grommets.
5. Mount the provided mounting plates to the outside of the frame. The angle iron will rest on top of the frame.
- 5a. *Note: The two holes where the factory bumper was mounted may have to be drilled out to 1/2".*
6. Use the 1/2" x 4" bolts in the top and bottom holes.
7. Reinstall the tow hooks using the factory bolts.
8. Install the Legend Front Bumper to the mounting plate using the 1/2" x 2" bolts.
9. Center and level the bumper then continue by completely tightening the bolts.
10. Mount the fog light bracket to the two 7/16" slotted holes located on the bottom of the mounting bracket. Level the fog light through the opening in the skirt and use the 3/8" bolts provided.
11. Plug in the fog light / sensor harness.
- 11a. *Note: We advise securing the wiring / sensor harness with a zip-tie.*

ALWAYS MAKE SURE ALL NUTS AND BOLTS ARE TIGHT!

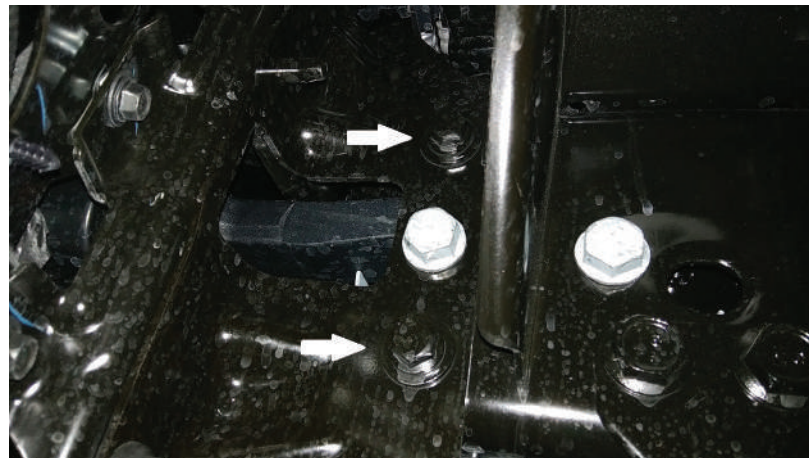
1



2



3



2019 RAM 2500 & 3500 Legend Front Bumper - FBD19IBLR / FBD19IBLRC / BTD19IBLR / FSD19IBL1 / FSD19IBLIC / BSD19IBL1

Check out the collection of off-road bumpers we offer.