



2014+ SUBARU FORESTER MUD FLAP INSTALLATION INSTRUCTIONS

PLEASE REVIEW THESE INSTRUCTIONS IN ITS ENTIRETY BEFORE ATTEMPTING INSTALLATION

To protect your Rally Armor mud flaps, **care must be taken during parking and reversing**. Rally Armor always recommends professional installation. Check wheel clearances after installation, especially on vehicles outfitted with non-OEM offset wheels and suspensions. Adjust accordingly.

Rally Armor is not responsible for damage or loss of installed mud flaps.



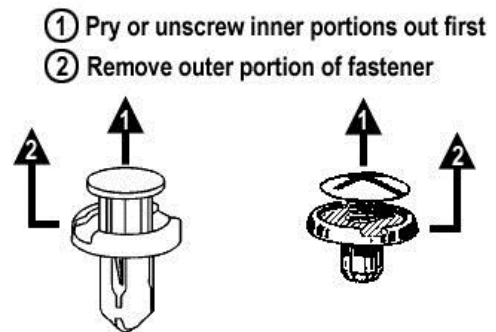
Each mud flap set contains 4 flaps and mounting hardware (unless otherwise noted).

Recommended tools: Stubby and standard Philips Screwdriver, 7/16th wrench or socket w/ratchet, small & long flat head screwdrivers, small snips.

YOUR MOUNTING HARDWARE CONSISTS OF:

Quantity	Hardware Item	Item ID
2	Front brackets	HMF28-BR-FR
2	Rear Brackets	HMF13-BRKT
4	Inserts	Ins5
2	Stainless Steel Lock Nuts	SSLnut
12	Washers	SmWash
12	Polygon Clips	PoCl
4	Short Stainless Steel Screws	1SS
8	Long Stainless Steel Screws	1.5SS
2	Machine Screws	1MCHSS

TO REMOVE STOCK FASTENERS (REVERSE TO INSTALL):



Important Notes

Cautionary Tip: The hardware is strong and self-threading but over-tightening the mounting clips is not advised.

Installation Tip: To ease installation and avoid damage to existing OEM clips during removal, a well-lit, climate controlled installation environment is recommended.

To the installer: Please return these instructions to the customer after installation. Always test and check wheel clearances before returning vehicle.

To the customer: Retain these instructions after installation. They may be necessary for installing other optional parts or removal of this accessory.

Front Mud Flap Installation

Begin by parking the vehicle on an even surface. Turn the steering wheel to allow access to the inner wheel well area.

- **(Figure A)** Remove the 4 OEM fender liner fasteners (as shown). Pull liner away to gain access to the interior fender area.
- **(Figure B)** Place 2 polygon clips (PolCl) over 2 upper mounting points. Re-install liner, **do not** re-install two lower side skirt clips.
- **(Figure C)** (Refer to expanded diagram on last page and "Important Notes" below)

Place the mud flap with the logo facing the rear of the vehicle against the corresponding mounting points on the fender liner and bracket. Place a washer (SmWash) over a long screw (1.5SS) through the flap into each of the two upper mounted clips.

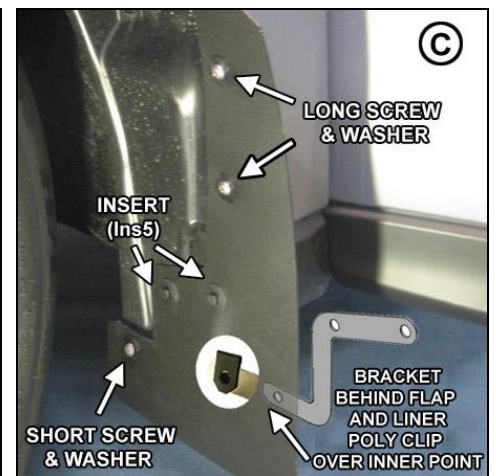
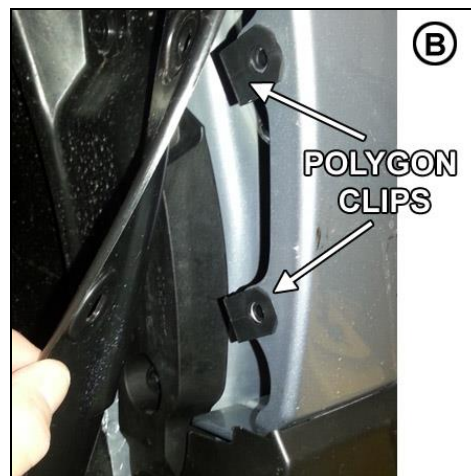
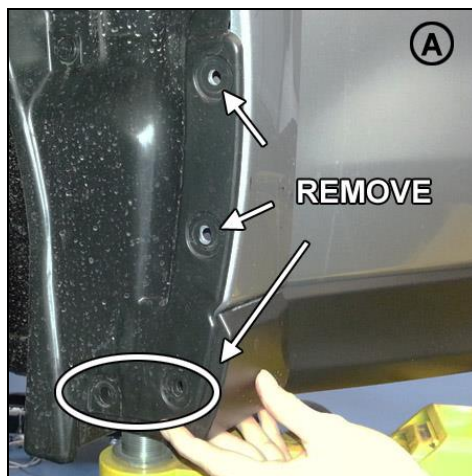
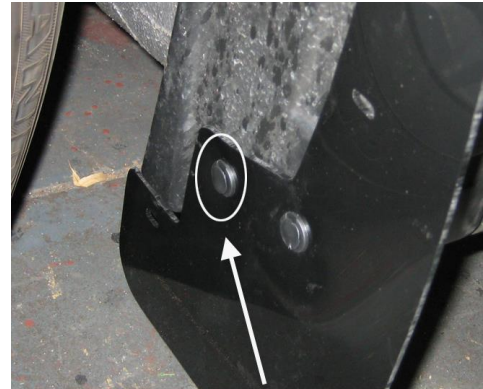
Place a polygon clip over the single mounting point on front bracket. Lay bracket against corresponding lower mounting points **BEHIND** the mud flap and the fender liner. Loosely thread a washer (SmWash) over a short screw (1SS) through the inner mounting point of the flap into clip mounted on the bracket.

Align outer edge of the flap by incrementally adjusting the angle of the flap and walking away from the vehicle until the flap is perpendicular to even ground. Tighten all mounting screws and bracket bolt only until snug. Do not over tighten. Lock inserts by pushing inner portion into the base of the vehicle with additional force.

Important Notes

(Figure C -continued) Loosely place the two Inserts (Ins5) through the lower mud flap, liner, bracket and vehicle mounting points. Do not secure this portion prior to aligning mud flap. This will retain the bracket on the vehicle while the other sections are secured and mud flap is aligned.

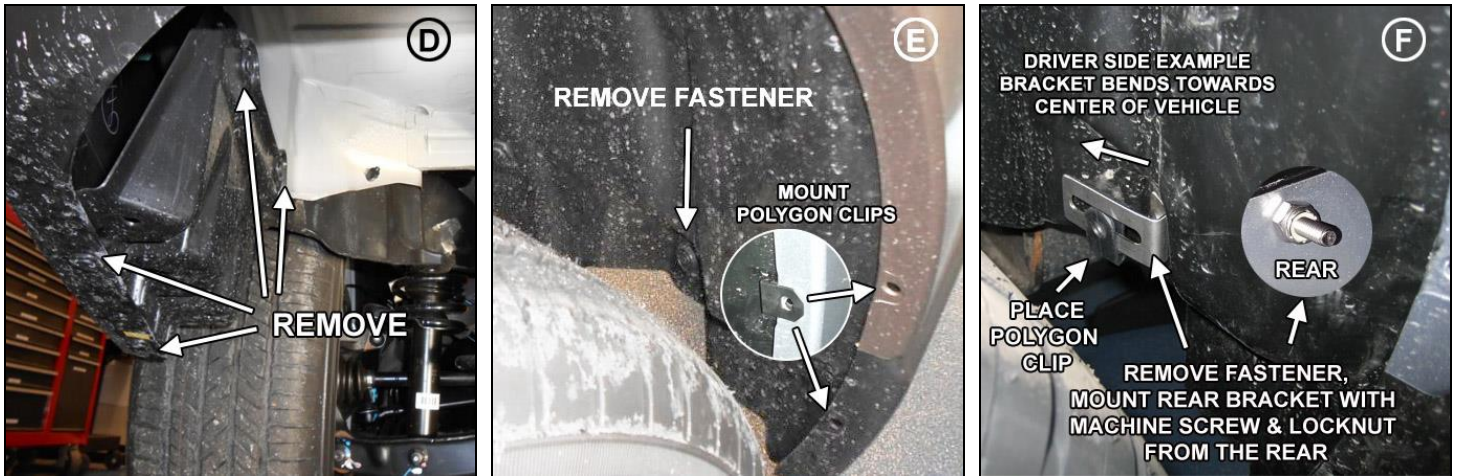
The front plastic inside cover on production models (secured by a nut behind the liner) may prevent one of the push inserts we provide from fully seating. To facilitate/ease installation, you can easily snip-away a small portion of the insert provided as shown:



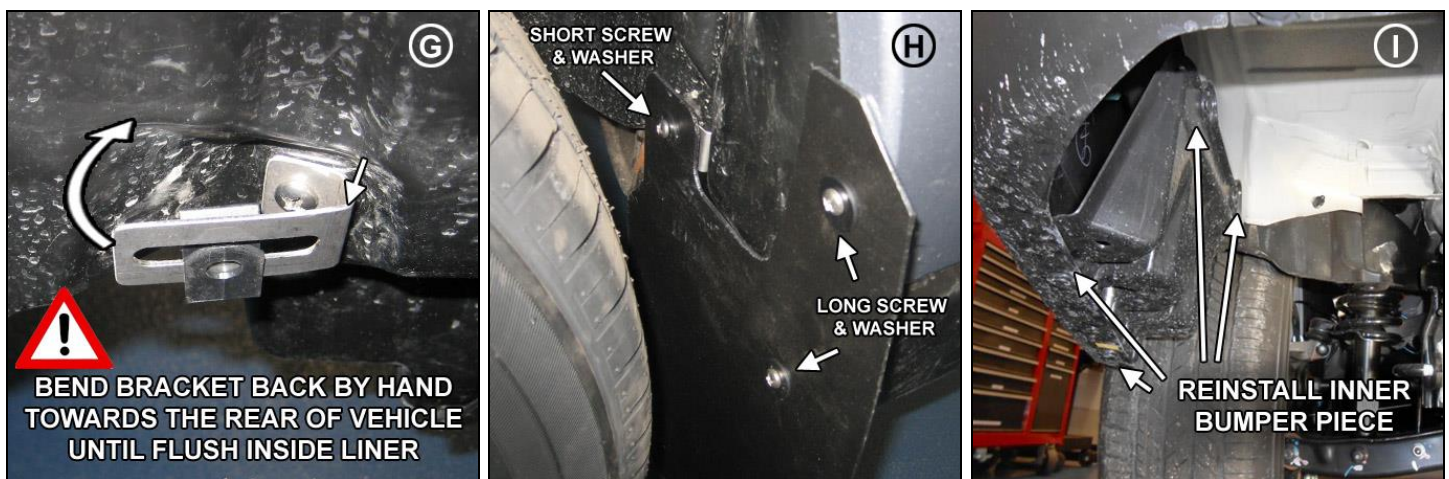
Rear Mud Flap Installation

Removal of rear wheel is not necessary but can ease installation. Jacking the rear of the vehicle should enable access to the rear wheel well area.

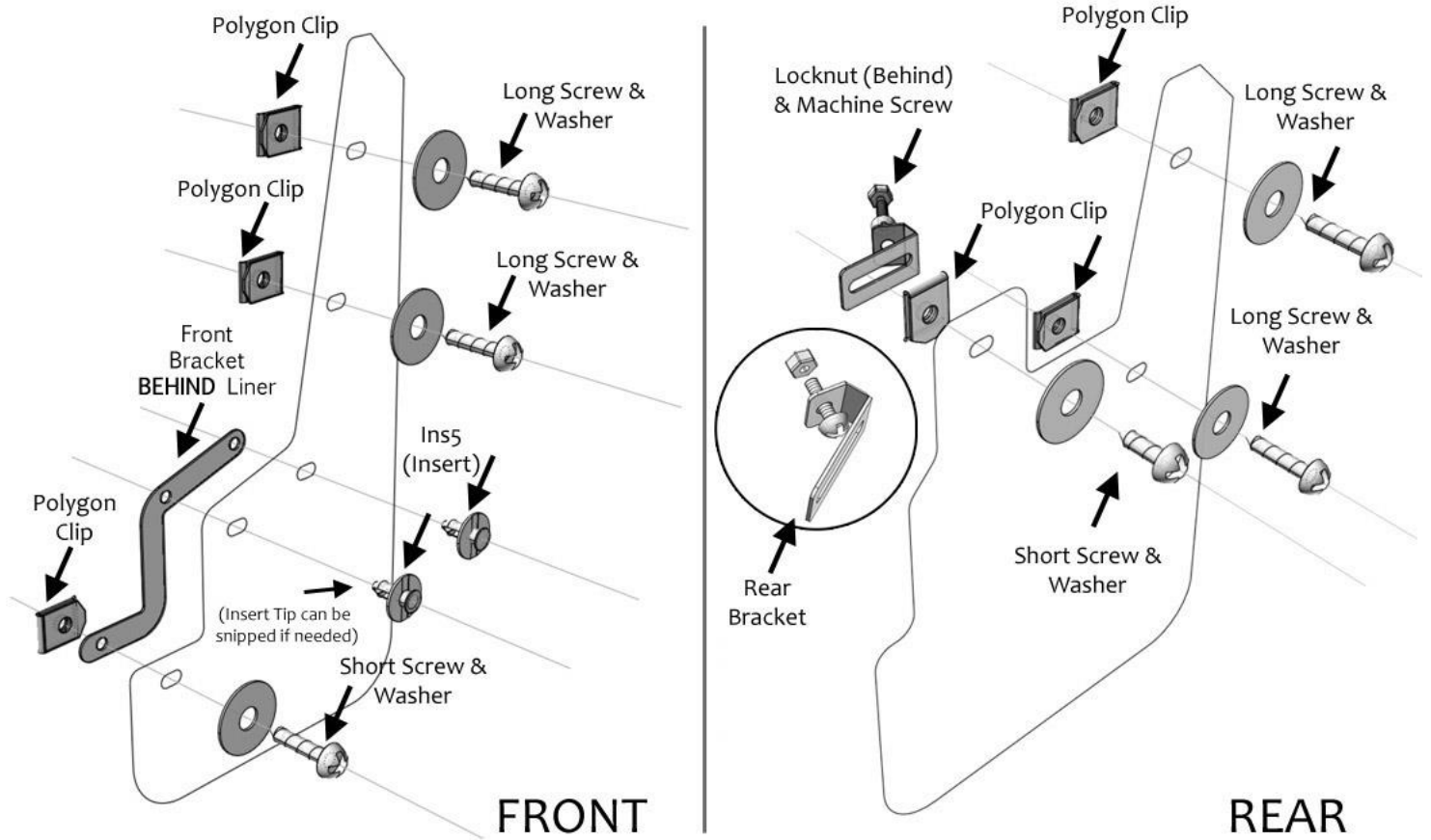
- **(Figure D)** Working from the rear of the vehicle, remove the 4 fasteners that secure the inner bumper piece to the bumper. Move inner bumper piece aside to gain access to this area.
- **(Figure E)** Remove the inner fender liner fastener on the tire side. Place two polygon clips on the outer edge bumper mounting points.
- **(Figure F)** Mount the rear bracket to vehicle using a machine screw (1MCHSS) through the circular mounting point in the bracket, through the liner, then secure with lock nut (SSLnut). You may place a Philips screwdriver through the extended slot on the bracket and tighten nut on the other side of the chassis with a key or socket. Do not over tighten. Place a polygon clip over the center of the extended slot on the bracket.



- **(Figure G)** Bend the bracket by pushing the edge until it is **completely flush** against the liner.
 - **(Figure H)** Place the mud flap with the logo facing the rear of the vehicle, against the corresponding mounting points on the fender liner and bracket. Place a washer (SmWash) over a long screw (1.5SS) through the flap into the two outer mounted clips. Place a washer (SmWash) over a short screw (1SS) through inside mounting point of the flap into the polygon clip on the bracket.
- ⚠️ Align outer edge of the flap by incrementally adjusting the angle of the flap and walking away from the vehicle until the flap is perpendicular to even ground. Tighten all mounting screws only until snug. Do not over tighten.
- **(Figure I)** Reinstall previously removed inner bumper piece with existing fasteners.



RALLYARMOR® HMF-28 Mounting Diagram



All content included on these instructions are the copyright of Rally Armor® LLC