



2013+ SUBARU IMPREZA XV CROSSTREK MUD FLAP INSTALLATION INSTRUCTIONS

PLEASE REVIEW THESE INSTRUCTIONS IN ITS ENTIRETY BEFORE ATTEMPTING INSTALLATION

To protect your Rally Armor mud flaps, **care must be taken during parking and reversing**. Rally Armor always recommends professional installation. Check wheel clearances after installation, especially on vehicles outfitted with non-OEM offset wheels and suspensions. Adjust accordingly.

Rally Armor is not responsible for damage or loss of installed mud flaps.



ALWAYS TEST COMPATIBILITY WITH YOUR SPECIFIC WHEEL, TIRE AND SUSPENSION COMBINATION



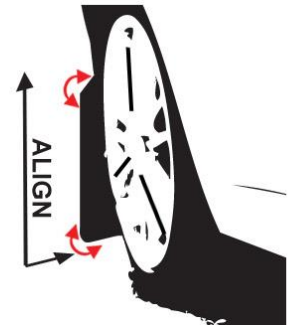
ALWAYS USE CAUTION DURING PARKING/REVERSAL SCENARIOS



CLEANING INSTRUCTIONS: USE WATER AND SOFT CLOTH TO CLEAN FLAPS. AVOID SOLVENT BASED CLEANERS



ALWAYS ALIGN YOUR MUD FLAP PERPENDICULAR TO GROUND PRIOR TO TIGHTENING

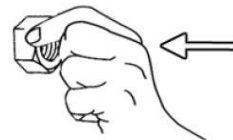


Each mud flap set contains 4 flaps and mounting hardware (unless otherwise noted).

Recommended tools: Philips Screwdriver, 7/16th wrench, 10mm wrench, small & long flat head screwdrivers.

YOUR MOUNTING HARDWARE CONSISTS OF:

Quantity	Hardware Item	Item ID
2	Front brackets	HMF24-BR-FR
2	Rear Brackets	HMF26-BR-RE
2	Spacers	.25Sp
4	Stainless Steel Lock Nuts	SSLnut
14	Washers	SmWash
10	Polygon Clips	PolCl
4	Short Stainless Steel Screws	1SS
6	Long Stainless Steel Screws	2SS
2	Plastic Hex Bolt Inserts	Ins4



TO AVOID MISTHREADING ALWAYS HAND THREAD LOCKNUTS TO BOLT FIRST



A CROSS THREADED NUT CAN DAMAGE A BOLT



Important Notes

Cautionary Tip: The hardware is strong and self threading but over-tightening the mounting clips is not advised.

Installation Tip: To ease installation and avoid damage to existing OEM clips during removal, a well lit, climate controlled installation environment is recommended.

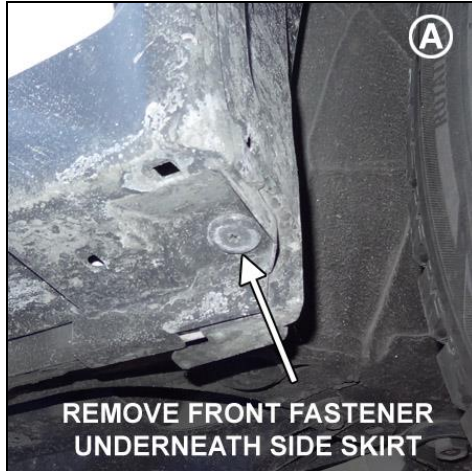
To the installer: Please return these instructions to the customer after installation. Always test and check wheel clearances before returning vehicle.

To the customer: Retain these instructions after installation. They may be necessary for installing other optional parts or removal of this accessory.

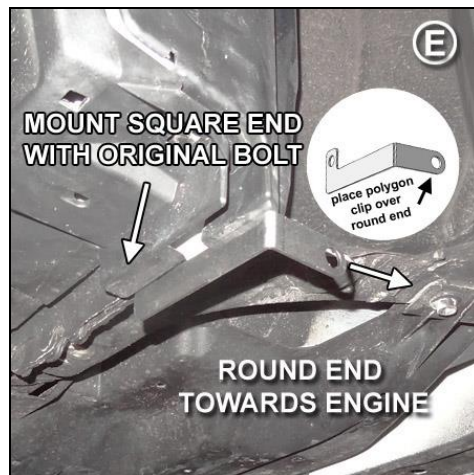
Front Mud Flap Installation

Begin by parking the vehicle on an even surface. Turn the steering wheel to allow access to the inner wheel well area.

- **(Figure A)** Remove front fender liner fastener located underneath the side skirt.
- **(Figure B)** Remove the three OEM fender liner fasteners (as shown). Carefully unclip front portion of side skirt by pulling the front outer edge away just enough to release first two horizontal retainer clips. Pull liner away to gain access to the interior fender area.
- **(Figure C)** Place 3 polygon clips over mounting tabs at an angle (as shown). Re-install liner, **do not** re-install side skirt clips

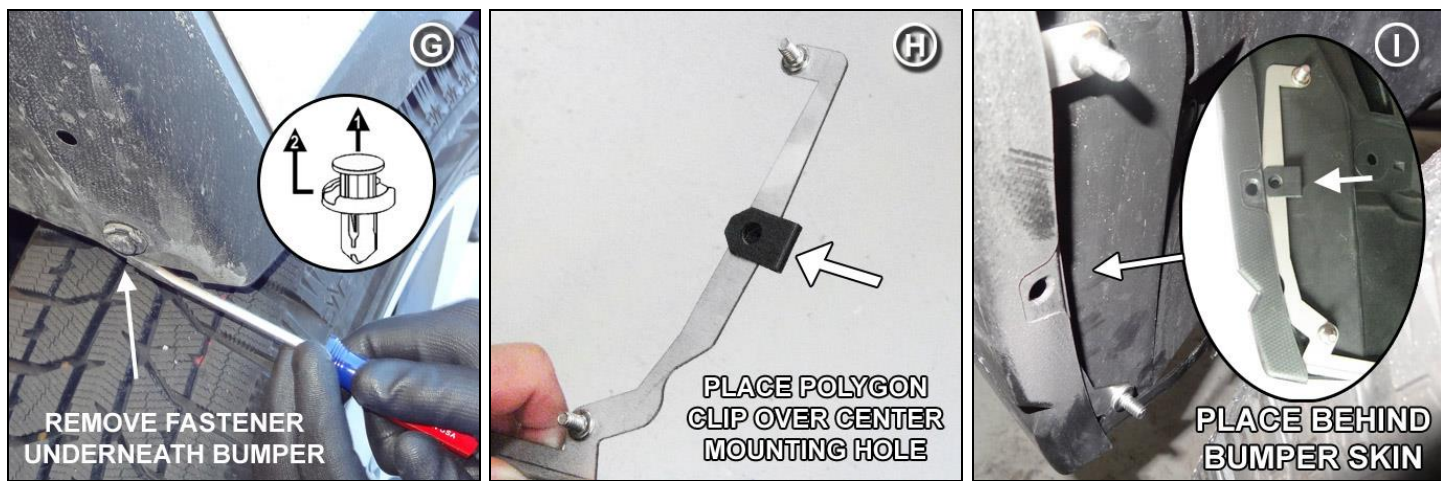


- **(Figure D)** Using a wrench, remove the 10mm bolt hidden behind side skirt area.
- **(Figure E)** Mount square edge of front using the 10mm bolt, tighten until snug but adjustable. Round edge faces engine side. Place polygon clip over round edge.
- **(Figure F)** Place the mud flap with the logo facing the rear of the vehicle, against the corresponding mounting points on the fender liner and bracket. Place a washer (SmWash) over a long screw (1.5SS) of the original screws through the flap into the mounted clips shown in image as "A", "B", "C", "D". **⚠ Important** - On the top most mount "A" place a spacer (.25SP) behind the mud flap. Reinstall side skirt back into place. **⚠** Align outer edge of the flap by incrementally adjusting the angle of the flap and walking away from the vehicle until the flap is perpendicular to even ground. Tighten all mounting screws and bracket bolt only until snug. Do not over tighten

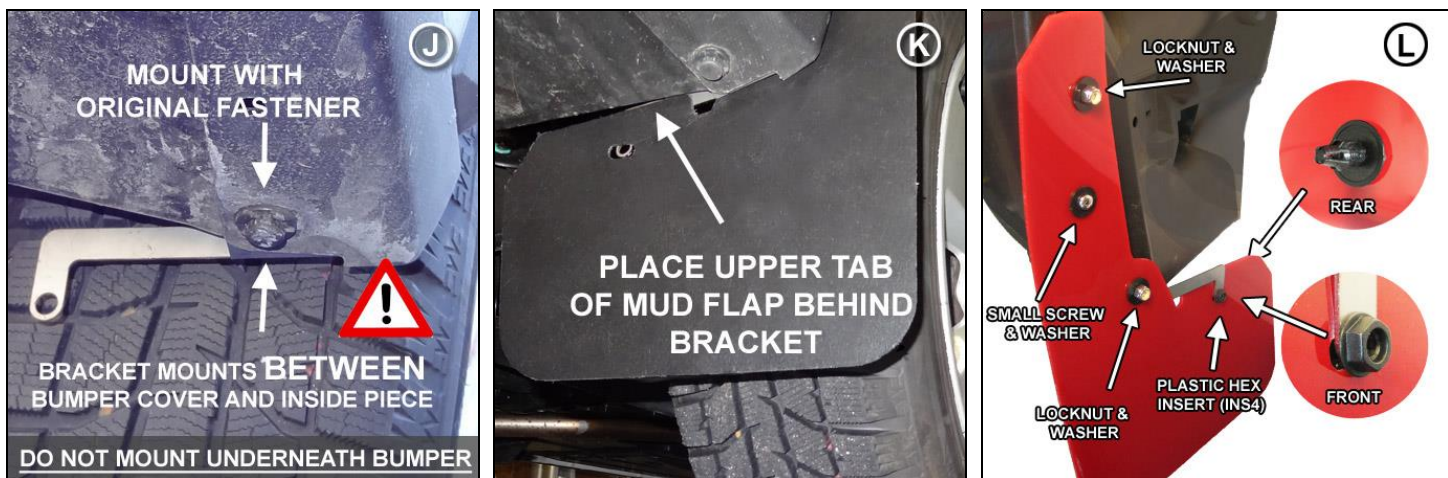


Rear Mud Flap Installation

- (Figure G) Remove stock retainer from under the rear bumper area as shown.
- (Figure H) Place polygon clip (PoCl) over the center mounting hole of the rear bracket.
- (Figure I) Slide rear bracket behind bumper skin, with clip visible behind the mounting hole in the bumper.



- (Figure J) **Important** - Mount bottom of the bracket between (NOT UNDERNEATH) bumper skin and the inner portion of the bumper. Secure bracket with original fastener.
 - (Figure K) Place the mud flap with the logo facing the rear of the vehicle, against the corresponding mounting points on the bumper and bracket. Pass the rear portion of mud flap **behind** mounting bracket via the relief built into the flap.
 - (Figure L) Loosely thread lock nut (SSLnut) and washer (SmWash) on upper mounting point **by hand**. Thread a washer (SmWash) and short screw (1SS) through center mounting point on flap into polygon clip (PoCl) mounted on bracket. Loosely thread lock nut (SSLnut) and washer (SmWash) on middle bolt point **by hand**. Place the INNER portion (bolt only) of the Plastic Hex Bolt Insert (Ins4) through the lowest mounting point in the bracket, into the mud flap, and thread to the base on the other side of flap.
- Important** - Align outer edge of the flap by incrementally adjusting the angle of the flap and walking away from the vehicle until the flap is perpendicular to even ground. Tighten all mounting screws and bracket bolt only until snug. Do not over tighten



RALLYARMOR® HMF-26 Mounting Diagram

