



2013+ FORD FIESTA ST MUD FLAP INSTALLATION INSTRUCTIONS

Check wheel clearance after installation, especially vehicles outfitted with non-OEM wheels and suspensions.

TO PROTECT YOUR RALLY ARMOR MUD FLAP SET, CARE MUST BE TAKEN DURING PARKING AND REVERSING.

⚠️ RALLY ARMOR IS NOT RESPONSIBLE FOR DAMAGE OR LOSS OF INSTALLED FLAPS. ⚠️



YOUR MOUNTING HARDWARE CONSISTS OF:		
Quantity	Hardware Item	Item ID
4	"S Clips"	SClip
6	"Polygon" Clips	PolyCl
8	Small Washers	SmWash
8	Large Washers	Wash
4	Long Screws	2SS
10	Short Screws	1SS
2	Front Side Skirt Spacers	HMF29-SS-SP
2	Front Mounting Brackets	HMF29-BR-FR
2	Front Black Flat Brackets	HMF29-BR-FR-FLAT
2	Angled Front Brackets	BRACKET#4
2	Rear Mounting Brackets	HMF29-BR-RE
4	Lock Nuts	SSLnut
2	Circle Foam Spacers	SMF29-1
2	Long Foam Spacer	SMF29-2
2	Thick Foam Spacer	SMF29-3
2	Large Plastic Spacer	1SP
2	Small Plastic Spacer	.75SP
2	Front Inner Wheel Liner Insert	INS
6	Front Side Skirt Spacer Insert	INS8
2	Rear Rivet Replacement Insert	INS5

INSERTS GUIDE		SCREWS/FASTENER GUIDE	
INS8		"LONG" SCREW 2SS	
INS5		"SHORT" SCREW 1SS	
INS		LOCKNUT SSLNUT	
PLASTIC SPACERS GUIDE		CLIPS & WASHERS GUIDE	
1SP		"S" CLIP	
.75SP		"POLY" CLIP	
HMF29-SS-SP		LARGE WASHER	
		SMALL WASHER	
FOAM SPACERS GUIDE		BRACKETS GUIDE	
CIRCLE FOAM SPACER (SMF29-1)		BRACKET#4	
LONG FOAM SPACER (SMF29-2)		HMF29-BR-FR	
THICK FOAM SPACER (SMF29-3)		HMF29-BR-RE	
		HMF29-BR-FR-FLAT	

Recommended tools: Offset, ratcheting or stubby Phillips screwdriver, small flat head screwdriver, small drill and bit assortment – must include 1/4" (6.35mm) and 5/16" (8mm), 7/16" wrench, marker.

Cautionary Tip: The hardware is strong and self-threading but over-tightening the clips or locknuts is not advised.

Installation Tip: To ease installation and avoid damage to existing OEM clips during removal, a well-lit, climate controlled installation environment is recommended.

Parking and Reversing: Any extended mud flap application can be damaged or dislodged should they get caught in between a tire and a curb or object. To protect your Rally Armor mud flap set, care must be taken during parking and reversing.

To the installer: Please return these instructions to the customer after installation. Always test and check wheel clearance before returning vehicle.

To the customer: Retain these instructions after installation. They may be necessary for installing other optional parts or removal of this accessory.

ON SOME VEHICLES, DISCOLORATION OF SIDE SKIRT FROM TIRE SPRAY/DEBRIS HAS BEEN OBSERVED.

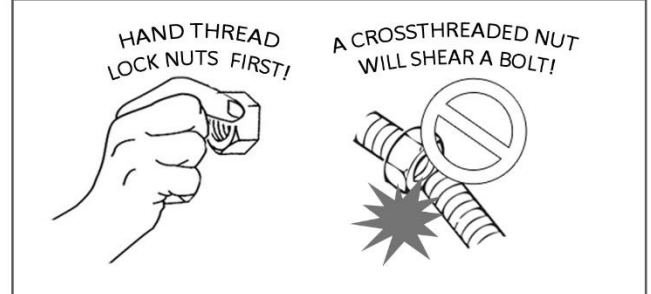


PRIOR TO MOUNTING THE MUD FLAPS, THE SIDE SKIRT CAP CAN BE EASILY REFRESHED WITH A FEW LIGHT PASSES OF READILY AVAILABLE BLACK MATTE TRIM PAINT.



CAREFULLY HAND THREAD LOCKNUTS TO BOLT FIRST TO AVOID MISTREADING. TIGHTEN AFTERWARDS WITH APPROPRIATE TOOL ONLY UNTIL SNUG

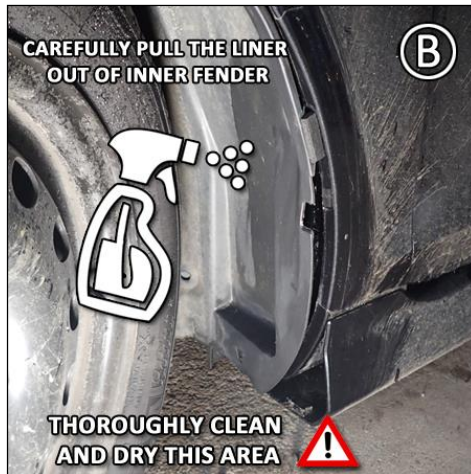
A CROSSTHREADED LOCKNUT CAN ACCIDENTALLY SHEAR THE BOLT REGARDLESS OF PRESSURE APPLIED



RALLYARMOR IS NOT RESPONSIBLE FOR MISTHREADED ITEMS DURING INSTALLATION

Front Mud Flap Installation

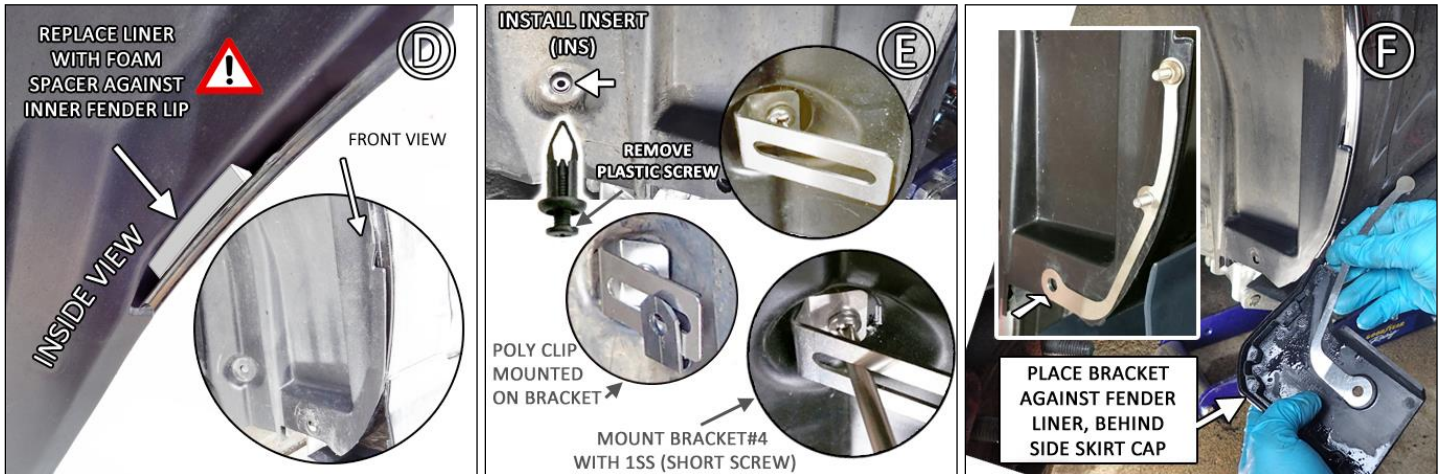
- **(Figure A)** Park vehicle on an even surface. Jack the front of the vehicle and support frame with safety stands as per factory instructions. Remove tire. Remove the front side skirt and the inner fender liner fasteners. Remove side skirt cap.
- **(Figure B)** Pull liner away to gain access to inner wheel well area. Carefully clean and dry the fender liner. Ensure there is no residual dirt/grease/dust.
- **(Figure C)** Adhere the THICK FOAM SPACER (SMF29-3) starting from the beginning of the upper notched area of the liner aligning it up along on the edge of the liner as shown. Place a "poly" clip (PolyCl) over the inner side skirt mounting point behind the liner.



• **(Figure D)** *Carefully* re-install the liner as before. Ensure that the THICK FOAM SPACER (SMF29-3) is against the inside of the fender as shown. Note that re-installation will be tighter as the new spacer will now limit any excess fender liner movement.

• **(Figure E)** Remove and discard the inner plastic screw from the front inner wheel well liner insert (INS). Install this insert through fender liner, into the inner fender liner mounting point. Secure angled front bracket (BRACKET#4) to vehicle by placing a short screw (1SS) through the mounting hole on the bracket. Slide polygon clip on to large slotted portion of the bracket from the bottom. You can tighten the screw by placing a screwdriver through the long mounting slot as shown.

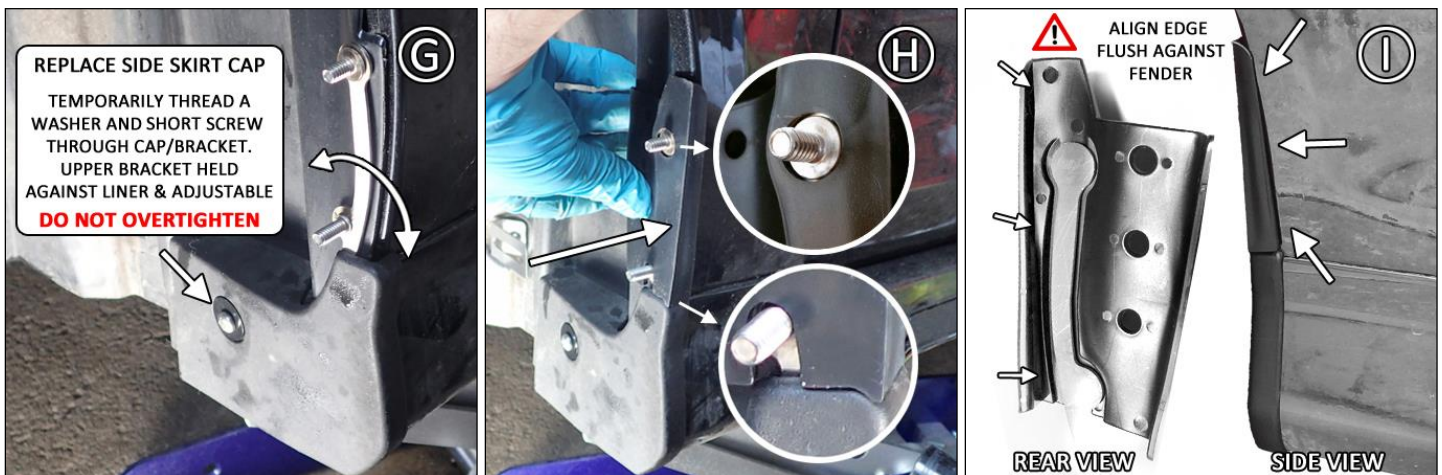
• **(Figure F)** Align lower front bracket mounting point against side skirt cap and place assembly against liner.



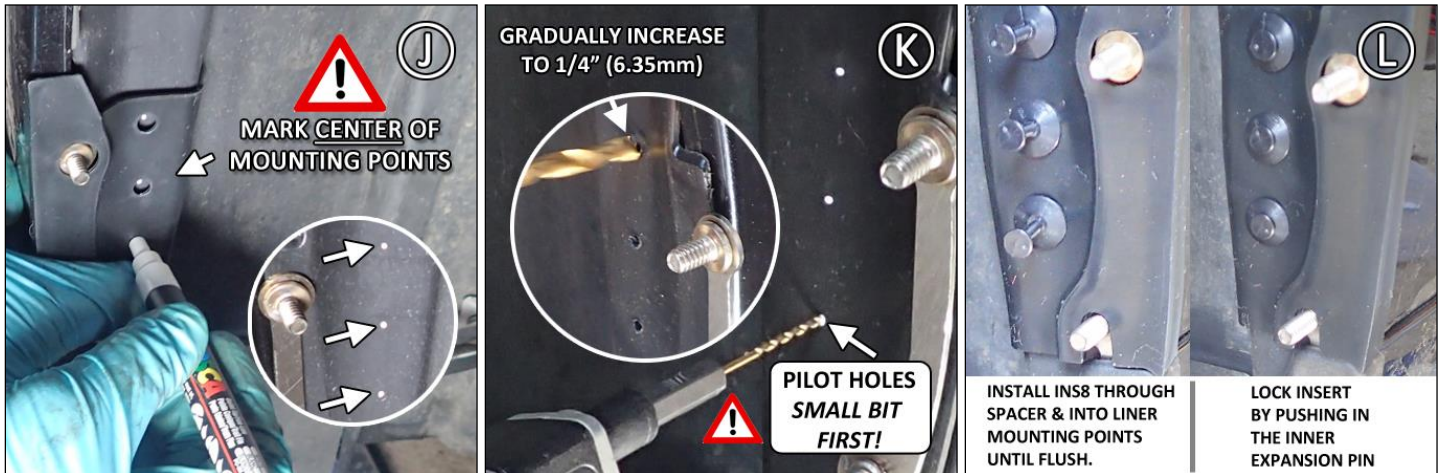
• **(Figure G)** Install side skirt cap as before with bracket against liner. Temporarily thread a short screw (1SS) and small washer (SmWash) through the side skirt cap, bracket and into the polygon clip installed on the inside of the fender. Do not overtighten. You will remove and reinstall this screw & washer when mounting the mud flap.

• **(Figure H)** Place the molded spacer (HMF29-SS-SP) over the bracket as shown. Ensure studs are centered through the spacer and that it is aligned correctly on the top of the side skirt and against the inner fender liner. The edge of the spacer should be also aligned with the curvature of the fender. The spacer will rest against the clear vinyl applique applied from the factory.

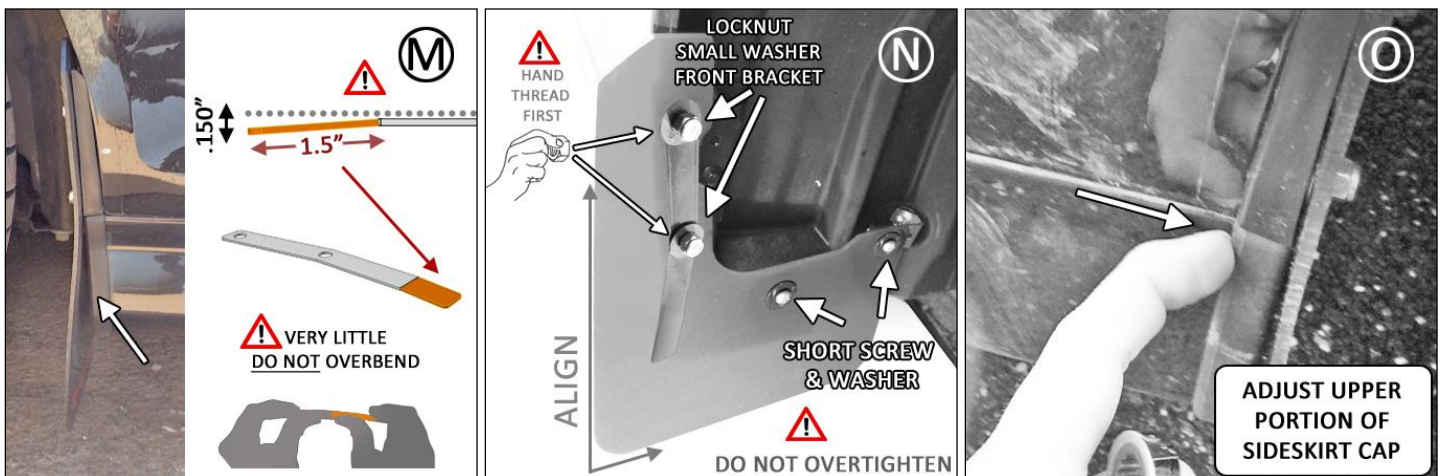
• **(Figure I)** Note how the spacer is placed flush against the fender, factory clear vinyl overlay and the top of side skirt cap.



- **(Figure J)** Maintain this alignment against the fender liner. **Carefully mark the center of each of the three mounting holes.**
- **(Figure K)** Remove spacer. Drill three small pilot holes first for each of the mounting points you have marked as to avoid a bigger bit from walking. Gradually increase to 1/4" drill bit (6.35mm). Remove any stray plastic strands.
- **(Figure L)** Place 3 Side Skirt Spacer Inserts (INS8) into each of the mounting points. Push the outer edge of each insert down until the spacer is flush with the fender liner and aligned correctly. Lock in place by pushing in expansion pins.

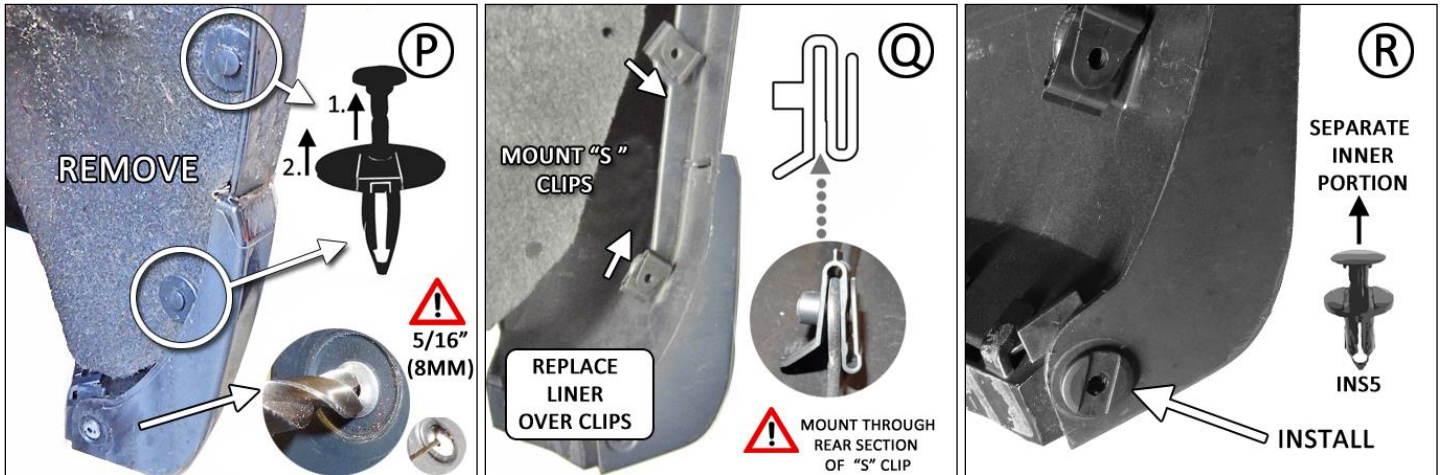


- **(Figure M)** When mounting the mud flap, you can eliminate any side skirt gap by mounting the HMF29-BR-FR-FLAT (black powder coated steel bracket). Passenger/Right shown. Create a very slight bend (almost not visible) starting at about 1.5" from the bottom of the bracket. When mounted, the bracket will keep the lower portion at an angle against side skirt. To test simply place over studs and push against the mud flap prior to bolting. **⚠ A bracket that is over bent will warp the mud flap and not mount correctly.**
 - **(Figure N)** Remove the side skirt screw temporarily mounted in Figure G and position the front mud flap with logo facing the rear of the vehicle. Thread a short screw (1SS) and a washer (SmWash) into the side skirt mounting point and "Poly" clip mounted on the angled bracket. You can move the polygon clip horizontally along the slot to match the mounting point in the mud flap. Place the flat black bracket over two upper mounting bolts, and secure with a small washer (SmWash) and hand thread a lock nut (SSLnut) on each of the two bolts. A mis-thread nut will shear a bolt. Do not fully tighten mounting points until aligned.
- ⚠** Align outer edge of the flaps by incrementally adjusting the side to side, lower/upper portion of the flap and walking away from the vehicle until the flap is perpendicular to even ground and mounting points are not visible from the outside/rear of vehicle.
- **(Figure O)** The side skirt cap is adjustable and can be pushed slightly forward to closely match the upper spacer.



Rear Mud Flap Installation

- **(Figure P)** Jack the rear of the vehicle up and support frame with safety stands as per factory recommended instructions. Remove the tire. Remove the two upper fasteners from the inside of the upper rear wheel well area. Remove rivet by drilling out a pilot hole first, and complete using a 5/16" (8mm) drill bit. The 5/16"ths bit will allow installation for INS5 insert supplied with your mud flap kit.
- **(Figure Q)** Move the rear liner away to expose the inner mounting points. Place two "S" clips over mounting tabs as shown. The rear section of the "S" clip (when viewed from the side) is installed over the mounts. Replace liner over clips
- **(Figure R)** Remove inner portion of INS5 and discard. Install INS5 in the previous location of the factory rivet.



- **(Figure S)** Thorough clean and dry the rear wheel well area. Adhere the **long** foam spacer (SMF29-2) on the edge of the bumper starting for the top of the rear spat. **Carefully align the outer edge of the foam spacer to the edge of the bumper as you go along.**
- **(Figure T)** Adhere the **circular** foam spacer (SMF29-1) over the mounting point found on the **flat** end of the rear bracket HMF29-BR-RE. Place a "poly" clip over the **round** mounting point.
- **(Figure U)** Position the rear mud flap with logo facing the rear of the vehicle. Mount a long screw (2SS) and large washer (Wash) through the middle mounting point of the mud flap and bracket as shown. Place a long plastic spacer (1SP) behind the bracket. Thread this mount into the lower "S" clip behind liner first. Circular foam spacer (SMF29-1) faces front of the vehicle.

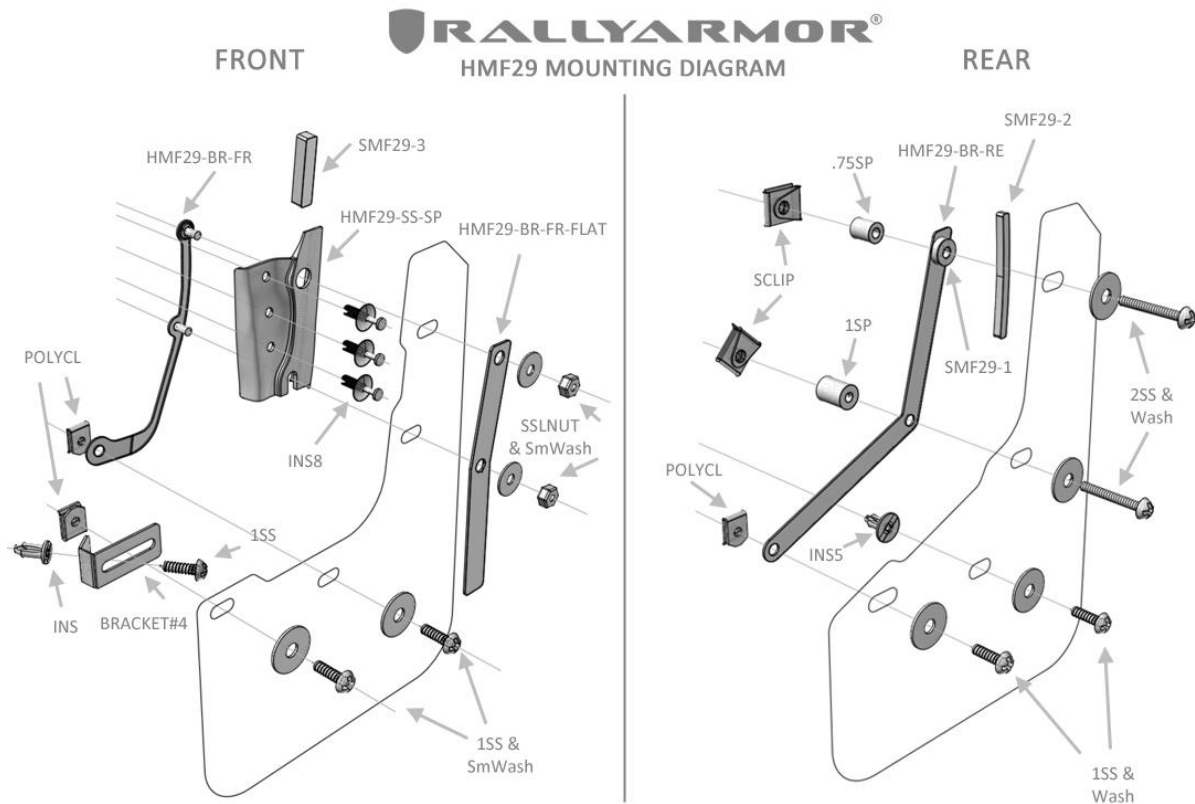


• **(Figure V)** Insert a long screw (2SS) and large washer (Wash) through the **upper mounting point of bracket**. Place a **small plastic spacer (.75SP)** behind this mounting point. Loosely thread into matching/upper "S" clip behind the liner. Loosely mount a short screw (1SS) and large washer (Wash) into the two remaining lower mounting points (into INS5 and the Poly" clip on the bracket).

⚠ Do not fully tighten you will be adjusting the flap.

• **(Figure W)** Prior to tightening the application, you can also adjust the inner portion of the mud flap by holding the assembly and bending the bracket (bend point shown in figure) to ensure aftermarket tire clearance and overall perpendicularity with the side of the vehicle. **⚠ Do not bend with the mud flap hardware tightened on to the bracketry. ⚠ Do not over bend.**

• **(Figure X)** Align the outer edge of the flap by incrementally adjusting the side to side, lower/upper portion of the flap. Check alignment by walking away and viewing at a distance until the flap is perpendicular to even ground. Tighten all mounting screws and nuts only until snug against washer. Do not overtighten.



Rally Armor is not responsible for damage or loss of installed flaps.

All content included on these instructions is the copyright of Rally Armor® LLC