



2012+ FIAT 500 MUD FLAP INSTALLATION INSTRUCTIONS

PLEASE REVIEW THESE INSTRUCTIONS IN ITS ENTIRETY BEFORE ATTEMPTING INSTALLATION

To protect your Rally Armor mud flaps, **care must be taken during parking and reversing.** Check wheel clearances after installation, especially on vehicles outfitted with non-OEM offset wheels and suspensions. Adjust accordingly.

Rally Armor is not responsible for damage or loss of installed mud flaps.



Each mud flap set contains 4 flaps, mounting brackets and hardware.

Required tools: Philips screwdriver, 7/16" wrench, 8mm wrench, Small pick, drill, Small pilot drill bit, 1/4" (.25") or 6.35mm drill bit, fine tip marker, Jack/jack stands.

YOUR MOUNTING HARDWARE CONSISTS OF:			INSERTS GUIDE:	
Quantity	Hardware Item	Item ID		
2	Front brackets	HMF25-BR-FR	<p>INS INS3 (WIDE BASE)</p> <p>TO AVOID MISTHREADING ALWAYS HAND THREAD LOCKNUTS TO BOLT FIRST</p> <p>A CROSS THREADED NUT CAN DAMAGE A BOLT</p>	
2	Rear Brackets	HMF25-BR-RE		
2	Inserts	Ins		
2	Wide Base Inserts	Ins3		
2	Spacers	.5Sp		
6	Stainless Steel Lock Nuts	SSLnut		
16	Washers	SmWash		
4	Polygon Clips	PolCl		
2	Short Stainless Steel Screws	1SS		
2	Long Stainless Steel Screws	2SS		

Important Notes

Cautionary Tip: The hardware is strong and self threading but over-tightening the mounting clips is not advised.

Installation Tip: To ease installation and avoid damage to existing OEM clips during removal, a well lit, climate controlled installation environment is recommended.

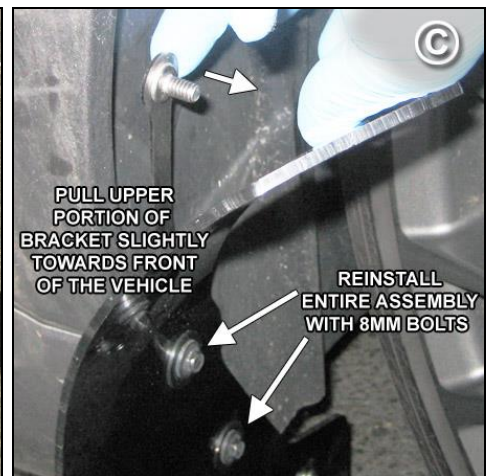
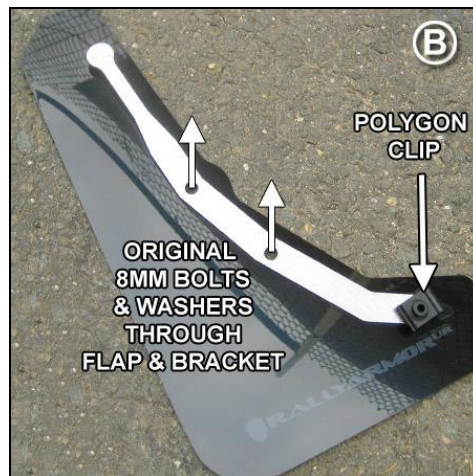
To the installer: Please return these instructions to the customer after installation. Always test and check wheel clearances before returning vehicle.

To the customer: Retain these instructions after installation. They may be necessary for installing other optional parts or removal of this accessory.

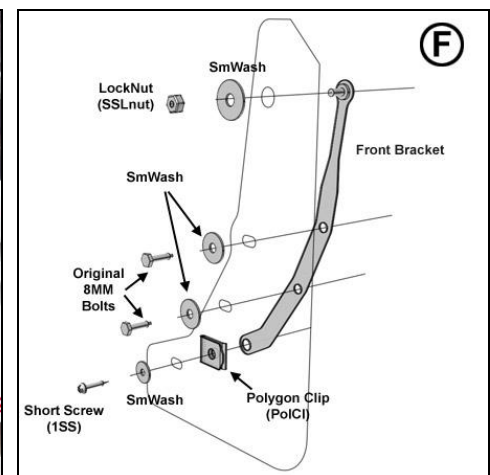
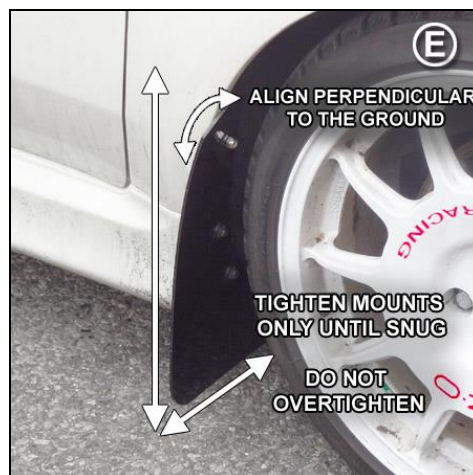
Front Mud Flap Installation

Begin by parking the vehicle on an even surface. Turn the steering wheel toward the side you are working on to allow access to the inner wheel well area.

- **(Figure A)** Remove both 8mm side skirt bolts and trim piece. You will re-use the fasteners to mount a portion of the mud flap.
- **(Figure B)** Place polygon clip (PoICI) over round edge of bracket. Place a washer (SmWash) over original 8mm bolts and thread through the existing flap mounting point into the corresponding mounting points in the bracket.
- **(Figure C)** Place entire assembly against side skirt mounting area with the logo facing the rear of the vehicle, aligning both 8mm bolts into their original location. Loosely thread both 8mm bolts. Pull upper portion of bracket slightly about half an inch as to bring closer to edge of fender.

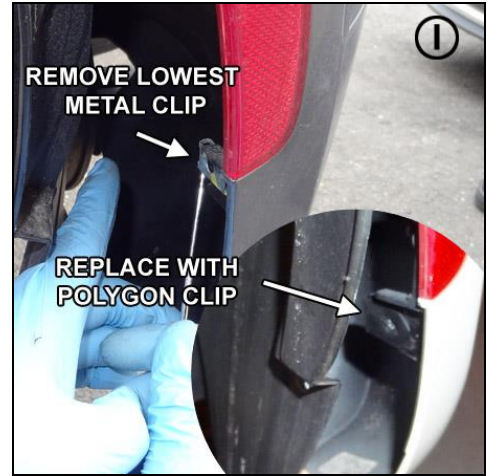


- **(Figure D)** Loosely thread lock nut (SSLnut) and washer (SmWash) on upper mounting point by hand first. Thread a washer (SmWash) and short screw through lower mounting point on flap into polygon clip (PoICI) mounted on bracket.
- **(Figure E)** Align outer edge of the flap and bracket by incrementally adjusting the angle and width/coverage of the flap and walking away from the vehicle until the flap is perpendicular to even ground. **Tighten all mounting screws and bracket bolt only until snug. Do not over tighten**
- **(Figure F)** Expanded diagram. Larger diagram is available on last page of these instructions.

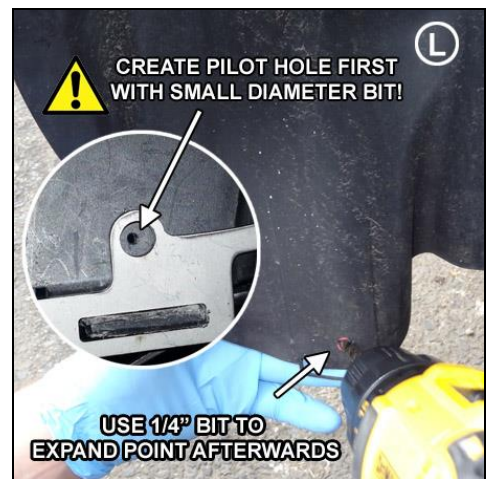
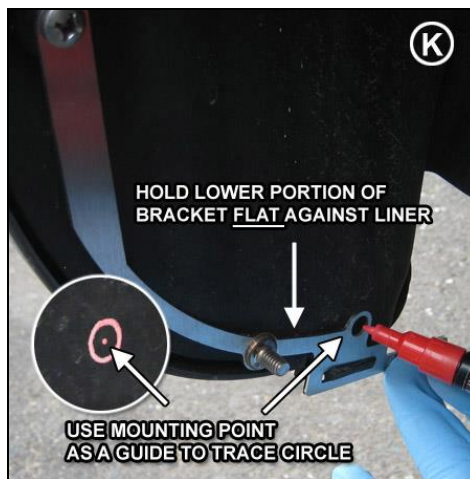
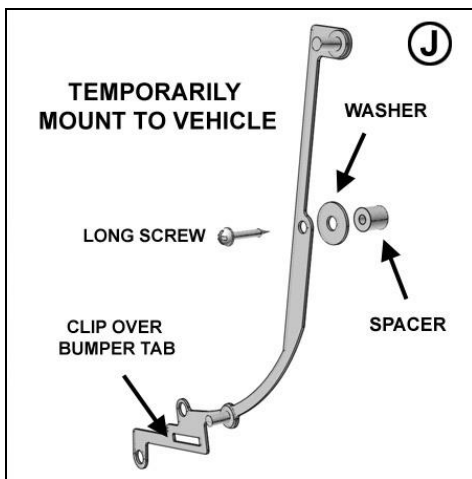


Rear Mud Flap Installation

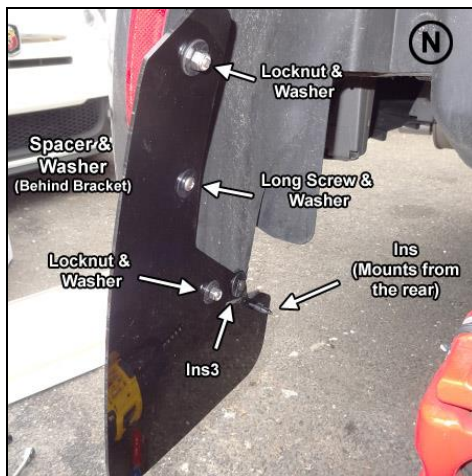
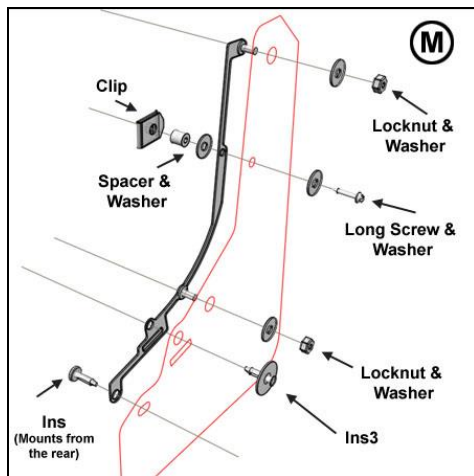
- **(Figure G)** Jack the rear of the vehicle and support frame with safety stands. Remove rear tire.
- **(Figure H)** Remove the 3 OEM fender liner fastener screws. GENTLY coax the lower fender liner mounting clip over the bumper tab with the assistance of a pick as to avoid damaging the thin plastic.
- **(Figure I)** Remove the lowest metal clip (#1 in figure "H") using pick, then install a polygon clip (PoCI) in its place.



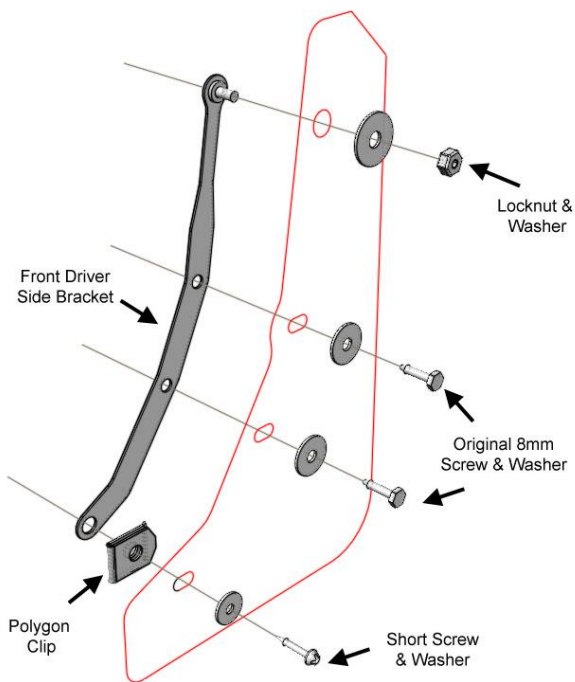
- **(Figure J)** Reposition rear liner back in place. Temporarily mount the rear bracket using the long screw (2SS) washer and spacer. Clip rectangular mount in bracket over bumper tab.
- **(Figure K)** Hold lower portion of the bracket flat against liner, and mark the center point of the lower mount with a marker. You can trace a circle inside using the bracket as a guide and mark the center point visibly afterwards. Carefully remove the bracket and unclip the liner from the lower mount again.
- **(Figure L)** Position the liner so you can see the mark you have created. Drill a small pilot hole in the center of the guide as shown. Expand hole with a 1/4" bit (.25" / 6.35 mm). Do not utilize a smaller or larger bit other than the size specified.



- **(Figure M)** Reinstall entire assembly with the flap over bracket. See diagram on last page.
- **(Figure N)** Passenger side rear mud flap mounted.
- **(Figure O)** Important- Ins3 must be seated flush against flap, bracket and liner as shown. Hold the rear of the liner with two fingers, seating the wide base flat against flap first, and pushing inner insert locking mechanism with your thumb afterwards. Ins is mounted through the logo side of the flap.



FRONT MOUNTING DIAGRAM



REAR MOUNTING DIAGRAM

