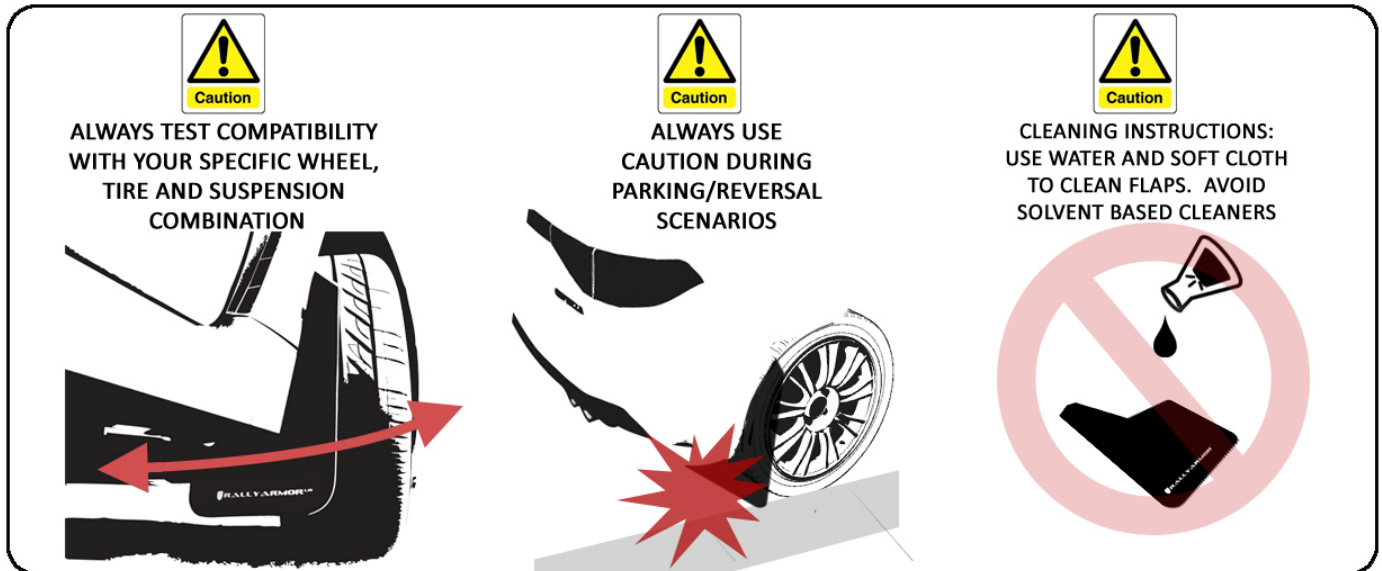


# RALLY ARMOR MUD FLAP INSTALLATION INSTRUCTIONS

## FOR 2010-2014 SUBARU STI and WRX SEDAN

Please read the instructions thoroughly before attempting to mount the mud flaps. Rally Armor always recommends professional installation.

To protect your Rally Armor **mud flap** set, care must be taken during parking and reversing. Check wheel clearance after installation, especially on vehicles outfitted with non-OEM offset wheels and suspensions. Adjust to accommodate accordingly in these scenarios. Rally Armor is not responsible for damage or loss of installed flaps.



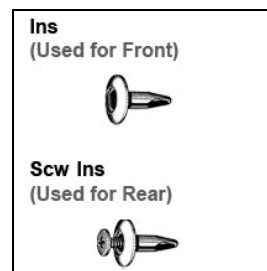
Each mud flap set contains 4 flaps for all four tires of the vehicle.

**Recommended tools:** Offset or ratcheting screwdriver, stubby Phillips screwdriver, small & long flat head screwdriver, 7/16" wrench.

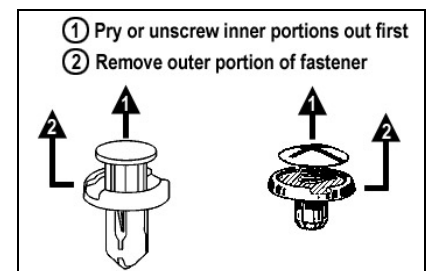
### YOUR 2011 STI & WRX SEDAN HARDWARE CONSISTS OF:

Quantity	Hardware Item	Item ID
6	Polygon Edge Clips	PolCl
12	Small Washers	SmWash
8	Lock Nuts	SSLnut
4	Short Screws	1SS
4	Flathead Screws	15FHSS
2	Inserts	Ins
2	Inserts -with plastic screw	Scw Ins
2	Front Mounting Brackets	HMF19-F-BR
2	Rear Mounting Brackets	HMF19-R-BR

### GUIDE TO INSERTS PROVIDED:



### HOW TO REMOVE STOCK FASTENERS:



### Important Notes

**Cautionary Tip:** The hardware is strong and self threading but over-tightening the clips is not advised.  
**Installation Tip:** To ease installation and avoid damage to existing OEM clips during removal, a well lit, climate controlled installation environment is recommended.

**To the installer:** Please return these instructions to the customer after installation. Always test and check wheel clearance before returning vehicle.

**To the customer:** Retain these instructions after installation. They may be necessary for installing other optional parts or removal of this accessory.

# Front Mud Flap Installation

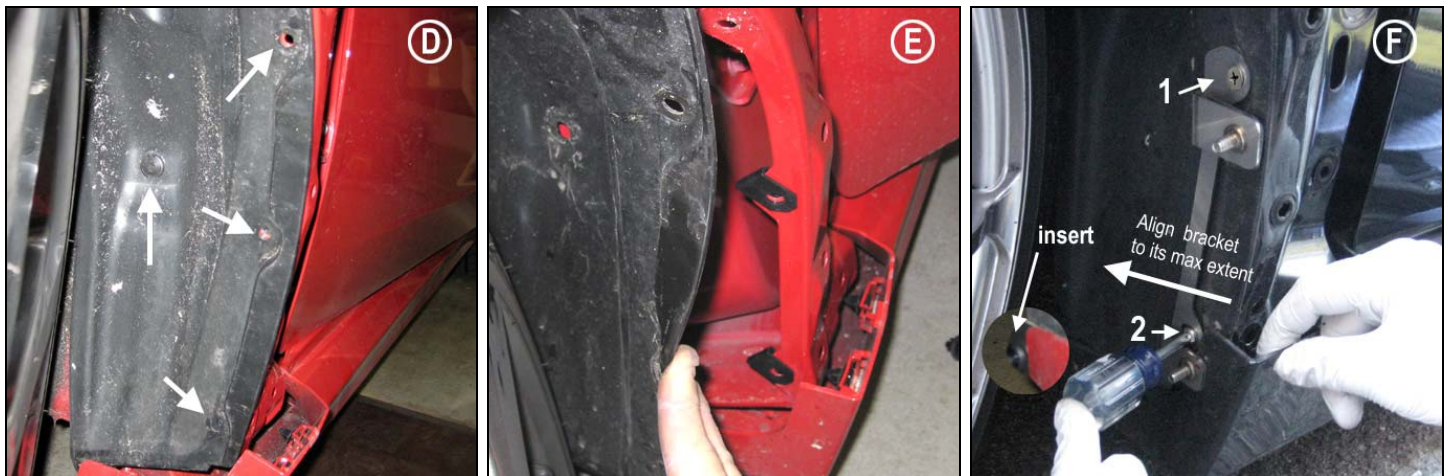
Begin by parking the vehicle on an even surface. Turn the steering wheel towards the side you are working on to gain access to the wheel well area.

- **(Figure A)** Open car door to avoid contact with side skirt. Remove first two push clips under the side skirt.
- **(Figure B)** Carefully unclip front portion of side skirt by pulling the outer edge away just enough to release two horizontal retainer clips.
- **(Figure C)** Remove the plastic fender cover in increments. Pull upper left/right portions of the cover until each plastic retainer clip is released and work downwards towards side skirt.

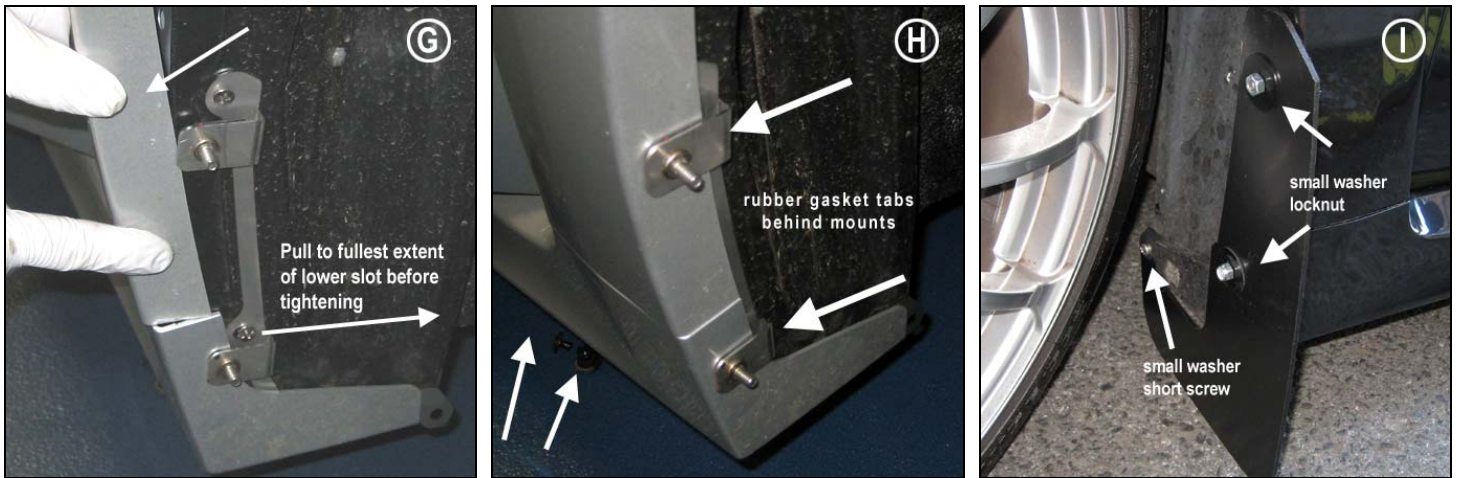


- **(Figure D)** Remove the four OEM fender liner retainer clips. Pull liner away to gain access to inner fender.
- **(Figure E)** Place two supplied clips (PoICI ) over mounting tabs at an angle (as shown).
- **(Figure F)** Reinstall the fender liner. Place front metal bracket over mounting points with lower portion tucked between side skirt and liner. Thread flat head screws (15FHSS ) into corresponding two upper mounting points through liner, into clips. Do not fully tighten. Place insert (Ins), until flush, into the innermost mounting slot of bracket. Remount previously removed upper and inside fender liner clips .

**Important:** Lower mounting point of bracket is slotted. Align the lower portion of bracket at its fullest extent of the slot **in towards the vehicle**.

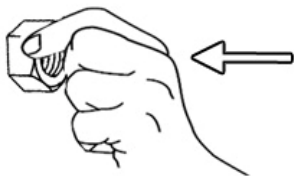


- **(Figure G)** Loosely fit fender cover back on to the vehicle and adjust mounting bracket clearances to cover and side skirt by slightly tightening or loosening mounting screws. **Important: Lower mounting point of bracket is slotted. Align the lower innermost portion of the bracket by adjusting it inwards, to its fullest extent into the vehicle, prior to final bolting.**
- **(Figure H)** Replace cover and side skirt when adjustment is complete. Fitment is correct when fender cover lip can be slightly compressed by hand and rests comfortably against **protective rubber gaskets behind bracket tabs**. Remount two OEM lower side skirt clips and two remaining OEM fender liner fasteners.
- **(Figure I)** The front mud flap mounts with the logo facing the rear of the vehicle. Place the mud flap against the corresponding mounting points on the bracket passing small washers (SmWash) over the flap through the threaded bolts. Install lock nuts (SSLnut) on the two threaded mounting points. Thread a short screw (1SS) with small washer through the flap into the mounted insert (Ins). Tighten all points until snug. Do not overtighten.



**Important**

The inner liner and side skirt area is specifically designed to be visible and unobstructed for maximum tire clearance. This allows for improved OEM and aftermarket wheel compliance.



To avoid misthreading, always hand thread locknuts to bolts. Tighten afterwards with appropriate tool only until snug.

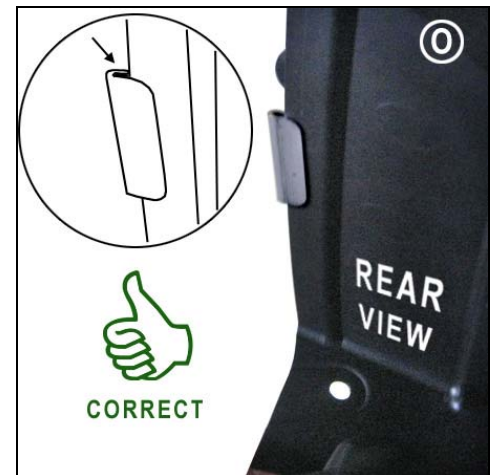
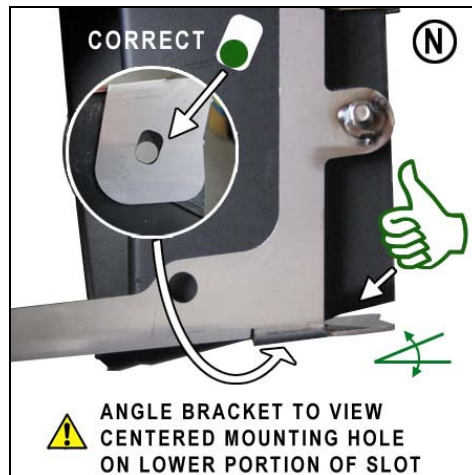
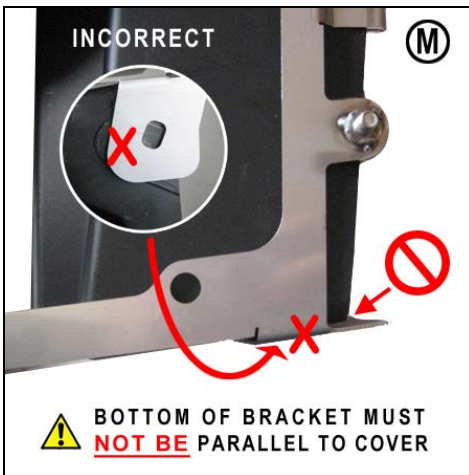


## Rear Mud Flap Installation

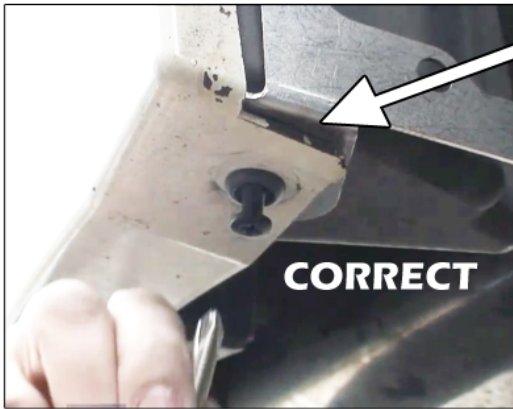
- **(Figure J)** Remove the 5 stock retainers that attach the inner black bumper piece to the bumper cover and vehicle.
- **(Figure K)** Remove the inner bumper piece from vehicle.
- **(Figure L)** Slide tabbed or folded end of bracket over outer edge of bumper piece where it meets bumper cover. Align the lower portion of the bracket at an angle.



- (Figure M) Example of bracket **incorrectly** positioned. Lower portion of bracket should not be parallel to cover.
- (Figure N) Example of bracket **correctly** positioned. Mounting hole will be visible through the lower slot of bracket.
- (Figure O) Note proper tabbed end placement on cover. The components will align during re-installation into bumper cover.

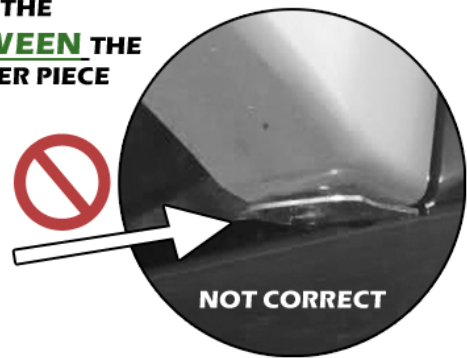


- (Figure P) Position the bumper piece assembly with bracket back on to vehicle. Position the bracket tabs over bumper cover.
- (Figure Q) **Important-** Check the make sure that the upper portion of bumper piece notch is installed correctly on the vehicle.
- (Figure R) Reinstall bumper piece with original OEM fasteners. For the lowest point underneath bumper cover, use the supplied insert with plastic screw (Scw Ins). **Important-** lower portion of bracket mounts BETWEEN BUMPER COVER and INNER BUMPER PIECE

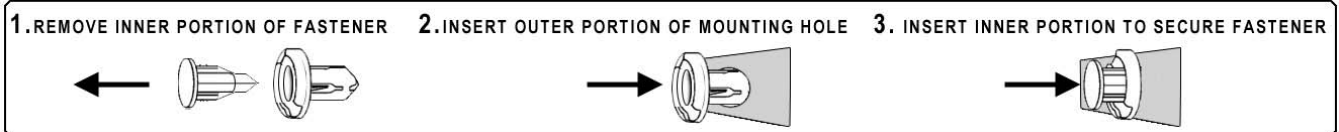


THE LOWER PORTION OF THE BRACKET MOUNTS **BETWEEN** THE BUMPER COVER AND INNER PIECE

**DO NOT MOUNT REAR BRACKET UNDERNEATH BUMPER IN THIS MANNER**



**! IMPORTANT TO RE-INSTALL FASTENERS ON INNER BUMPER PIECE (Including ScwIns)**



- **(Figure S)** Place the mud flap against the corresponding mounting points on the bracket. Base of threaded bolt must be inside of mounting point of mud flap. Pass small washers (SmWash) over the flap on to the threaded bolts. Install lock nuts (SSLnut) on the two threaded mounting points. Thread a short screw (1SS) with small washer through the flap into the mounted clip (PolCl). Do not fully tighten as you will be aligning the flap.
- **(Figure T)** Align outer edge of the flap by incrementally adjusting the lower portion of the flap and walking away from the vehicle until the flap is perpendicular to even ground.
- **(Figure U)** You must adjust the inner mounting point by holding the outer edge of the assembly and gently bending the inner bracket about a ¼" towards the rear of the vehicle, away from the tire to ensure adequate clearance during suspension compression. Tighten all mounting screws and nuts only until snug against washer. Do not over tighten.



**Check wheel clearance after installation, especially on vehicles outfitted with non-OEM offset wheels and suspensions. Adjust to accommodate accordingly in these scenarios. Rally Armor is not responsible for damage or loss of installed flaps.**

All content included on these instructions is the copyright of Rally Armor® LLC