

RALLY ARMOR MUD FLAP INSTALLATION INSTRUCTIONS FOR 2010-2013 MAZDA3, MAZDASPEED3

Please read the instructions thoroughly before attempting to mount the mud flaps. Rally Armor always recommends professional installation.

To protect your Rally Armor [mud flap](#) set, care must be taken during parking and reversing. Check wheel clearance after installation, especially vehicles outfitted with non-OEM offset wheels and suspensions. Rally Armor is not responsible for damage or loss of installed flaps.

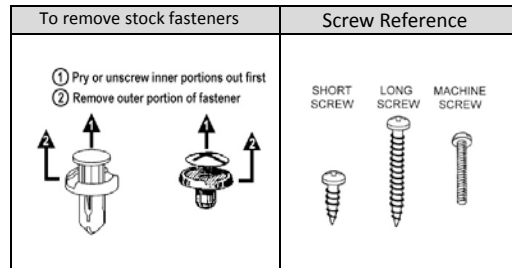


Each mud flap set contains 4 flaps for all 4 tires of the vehicle.

Recommended tools: Offset, ratcheting or stubby Phillips screwdriver, small flat head screwdriver, small snips or razor blade, drill and bit assortment, 7/16" wrench or ratchet /socket.

Rally Armor **2010+ Mazda3 and Mazdaspeed3** mud flap mounting hardware consists of:

Quantity	Hardware Item	Item ID
8	Polygon Edge Clips	PoICI
12	Washers	Wash
2	Short Screws	1SS
6	Long Screws	1.5SS
4	Machine Screws	1MCHSS
4	Locknuts	SSLNut
2	Rear Mounting Brackets	Lbrkt



Important Notes

The supplied hardware is strong and self threading but over-tightening the clips is not advised.

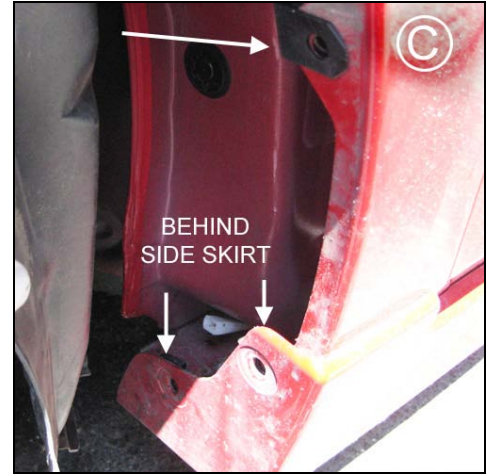
Installation Tip: To ease installation and avoid damage to existing OEM clips during removal, a well lit, climate controlled installation environment is recommended.

To the installer: Please return these instructions to the customer after installation. Always test and check wheel clearance before returning vehicle.

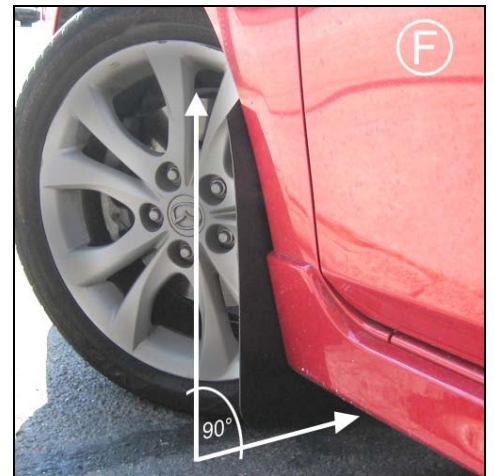
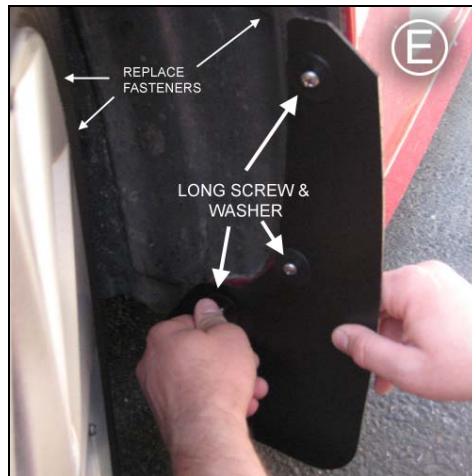
To the customer: Retain these instructions after installation. They may be necessary for installing other optional parts or removal of this accessory.

Front Mud Flap Installation

- **(Figure A)** Park vehicle on an even surface. Turn the steering wheel towards the side you are working on. Remove 4 outer fender liner fasteners.
- **(Figure B)** Turn the steering wheel towards the opposite direction. Remove the remaining rear inner fender liner fasteners.
- **(Figure C)** Pull liner away to gain access to inner fender. Place a polygon clip (PoICI) over each of the 3 mounting points as shown.

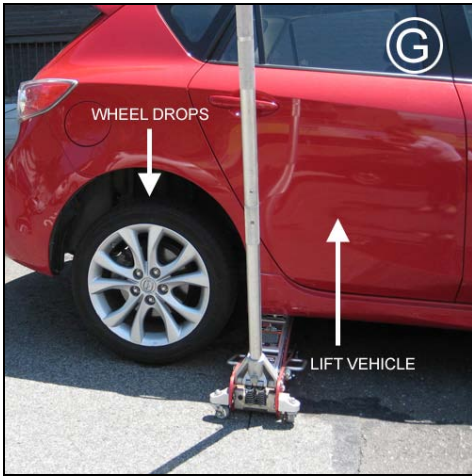


- **(Figure D)** Replace liner. Confirm clips are visible through the mounting holes. Adjust clip with tip of screw or small pick if required.
- **(Figure E)** Position the front mud flap with logo facing the rear of the vehicle. Using a long screw (1.5SS) and a washer (Wash), loosely bolt the mud flap to each 3 mounting points. Remount unused fender liner fasteners. Do not fully tighten mounting points.
- **(Figure F)** Align outer edge of the flap by incrementally adjusting the side to side, lower/upper portion of the flap and walking away from the vehicle until the flap is perpendicular to even ground. Tighten all mounting screws only until snug against washer. **Do not over tighten.**

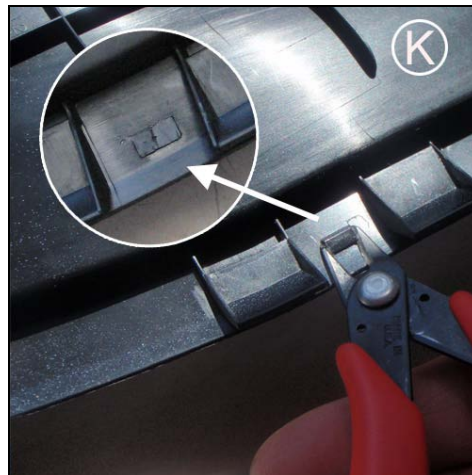


Rear Mud Flap Installation

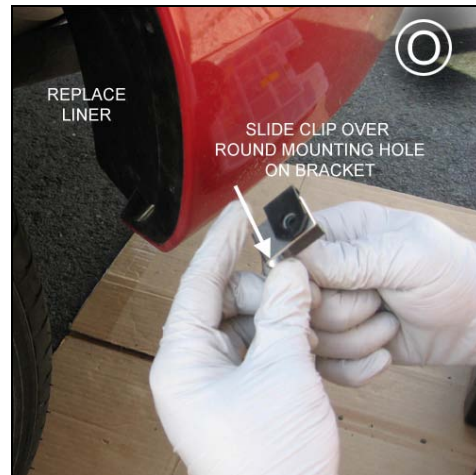
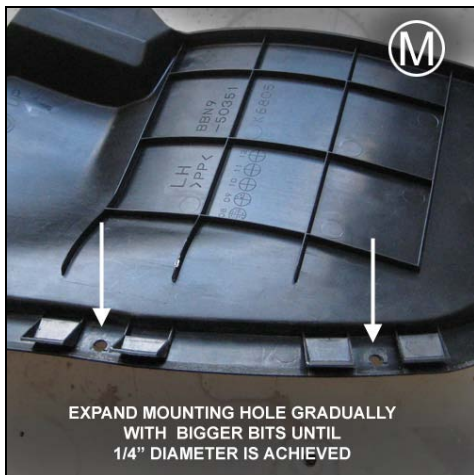
- **(Figure G)** Removal of rear wheel is not necessary but can ease installation. Jack up the rear of the vehicle enough to lower the tire and enable access to the rear wheel well area.
- **(Figure H)** Remove the rear wheel fender liner fasteners and lower bolt underneath the liner.
- **(Figure I)** Remove liner from vehicle.



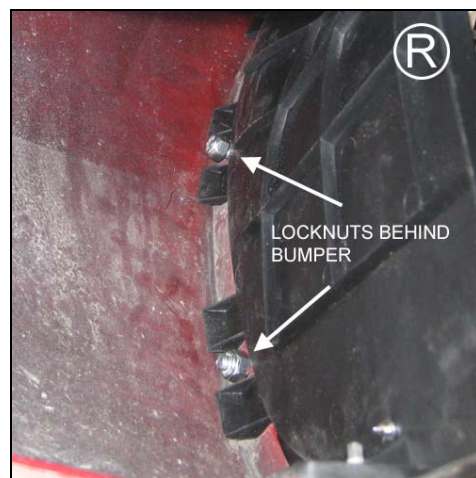
- **(Figure J)** Locate the two lower notches between the mounting tabs on liner.
- **(Figure K)** *Carefully* snip or trim off the both notches to a flat surface.
- **(Figure L)** Drill a small pilot hole exactly center of the rectangle left behind from the notch using a small bit (1/16" for example).



- **(Figure M)** Gradually enlarge the holes with a slightly bigger bit at a time until 1/4" hole is achieved.
- **(Figure N)** Remount modified liner on vehicle. Confirm mounting holes on bumper are visible through liner holes created.
- **(Figure O)** Place polygon clip over round mounting hole on bracket.



- **(Figure P)** Mount bracket to liner and bumper using existing liner bolt placed through the slotted hole on the bracket. Do not fully tighten.
- **(Figure Q)** Position the rear mud flap with logo facing the rear of the vehicle. Thread a machine screw (1MCHSS) and a washer (Wash), through the mud flap mounting point in to each of the two outer bumper mounting points. Use a small screw (1SS) and a washer (Wash) on the innermost bracket mounting point. Small screw tip can slightly pierce liner; this is normal. Adjust mud flap and bracket first before tightening all mounting points.
- **(Figure R)** Secure each of the two outer machine screw mounting points behind the rear bumper mount with a locknut. A socket or wrench can be utilized to hold locknut while tightening screw.



⚠ Important Notes

Align outer edge of the flaps by incrementally adjusting the side to side, lower/upper portion of the flap and walking away from the vehicle until the flap is perpendicular to even ground. Tighten all mounting screws only until snug against washer. Do not over tighten.

