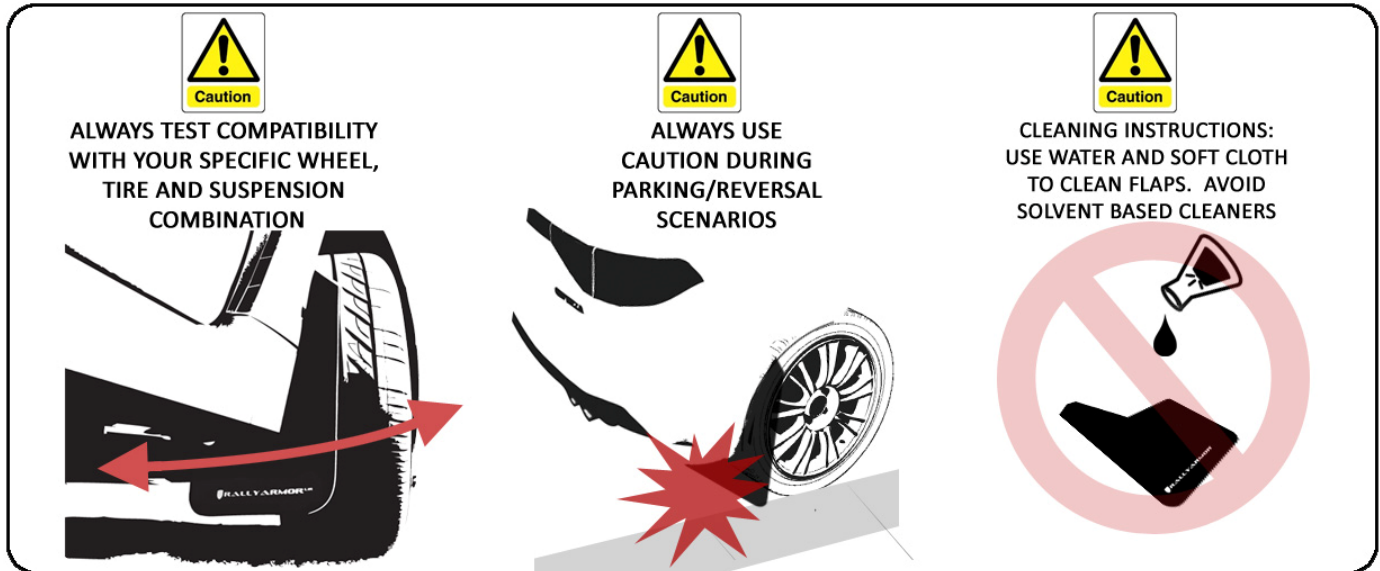


RALLY ARMOR VERSION 2 MUD FLAP INSTALLATION INSTRUCTIONS

2008-2014 Subaru STI and 2011-2014 WRX Hatchback only

Please read the instructions thoroughly before attempting to mount the mud flaps. Rally Armor always recommends professional installation.

To protect your Rally Armor [mud flap](#) set, care must be taken during parking and reversing. Check wheel clearance after installation, especially vehicles outfitted with non-OEM offset wheels and suspensions. Rally Armor is not responsible for damage or loss of installed flaps.



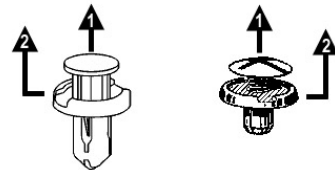
Each mud flap set contains 4 flaps for all four tires of the vehicle.

Recommended tools: Offset or ratcheting screwdriver, stubby Phillips screwdriver, small flat head screwdriver, 7/16" wrench. **Optional:** small mallet
2008+ STI Version 2 mounting hardware consists of:

| Quantity | Hardware Item | Item ID |
|----------|-------------------------|--------------------------|
| 10 | Polygon Edge Clips | PoICl |
| 6 | Small Washers | SmWash |
| 6 | Large Washers | Wash |
| 4 | Lock Nuts | SSLnut |
| 8 | Short Screws | 1SS |
| 4 | Flathead Screws | 15FHSS |
| 2 | Inserts | Ins |
| 2 | Front Mounting Brackets | HMF15-BR-DF/ HMF15-BR-PF |
| 2 | Rear Mounting Brackets | HMF15-BR-DR/ HMF15-BR-PR |

To remove stock fasteners

- 1 Pry or unscrew inner portions out first
- 2 Remove outer portion of fastener



Important Notes

Cautionary Tip: The hardware is strong and self threading but over-tightening the clips is not advised.

Installation Tip: To ease installation and avoid damage to existing OEM clips during removal, a well lit, climate controlled installation environment is recommended.

To the installer: Please return these instructions to the customer after installation. Always test and check wheel clearance before returning vehicle.

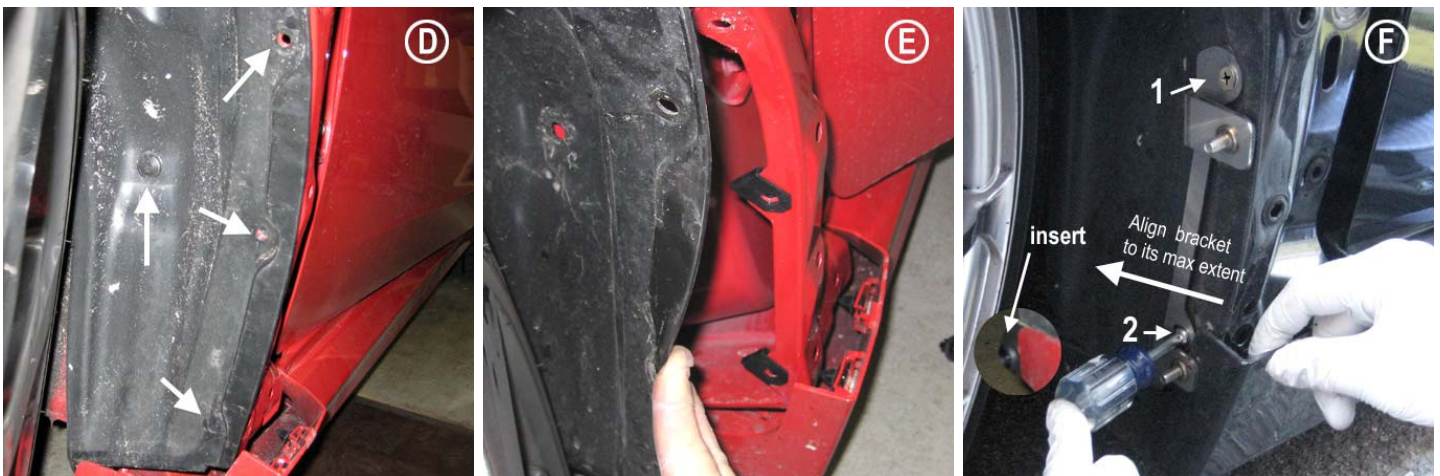
To the customer: Retain these instructions after installation. They may be necessary for installing other optional parts or removal of this accessory.

Front Mud Flap Installation

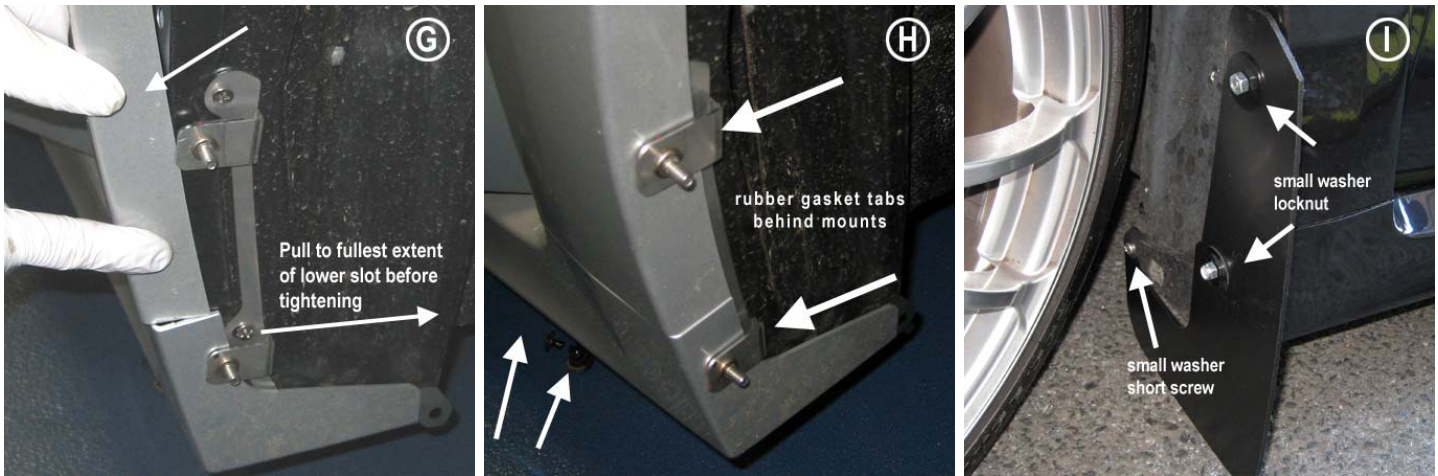
- Begin by parking the vehicle on an even surface. Turn the steering wheel towards the side you are working on to gain access to the wheel well area.
- **(Figure A)** Open car door to avoid contact with side skirt. Remove first two push clips under the side skirt.
- **(Figure B)** Carefully unclip front portion of side skirt by pulling the outer edge away just enough to release two horizontal retainer clips.
- **(Figure C)** Remove the plastic fender cover in increments. Pull upper left/right portions of the cover until each plastic retainer clip is released and work downwards towards side skirt.



- **(Figure D)** Remove the four OEM fender liner retainer clips. Pull liner away to gain access to inner fender.
- **(Figure E)** Place two supplied clips (PoICI) over mounting tabs at an angle (as shown).
- **(Figure F)** Reinstall fender liner. Place front metal bracket over mounting points with lower portion tucked between side skirt and liner. Thread flat head screws (15FHSS) into corresponding two upper mounting points through liner, into clips. Do not fully tighten. Place insert (Ins), until flush, into the innermost mounting slot of bracket. Remount previously removed upper and inside fender liner clips . **Important:** Lower mounting of bracket is slotted. Align the lower portion of bracket at its fullest extent of the slot **in towards the vehicle**.

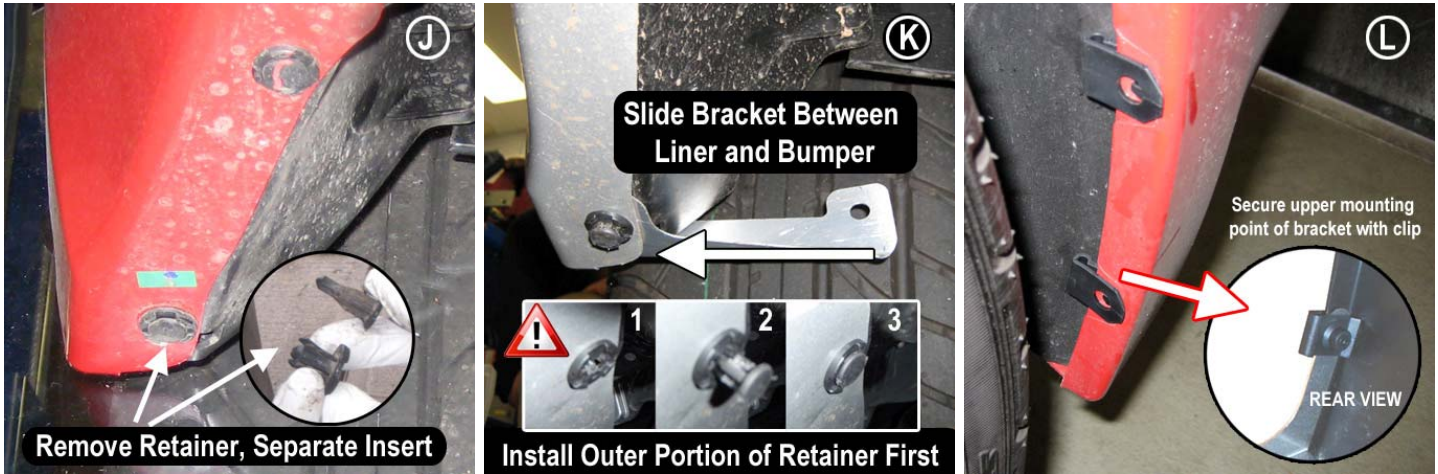


- **(Figure G)** Loosely fit fender cover back on to the vehicle and adjust mounting bracket clearances to cover and side skirt by slightly tightening or loosening mounting screws. **Important: Lower mounting point of bracket is slotted. Align the lower innermost portion of the bracket by adjusting it inwards, to its fullest extent into the vehicle, prior to final bolting.**
- **(Figure H)** Replace cover and side skirt when adjustment is complete. Fitment is correct when fender cover lip can be slightly compressed by hand and rests comfortably against **protective rubber gaskets behind bracket tabs**. Remount two OEM lower side skirt clips and two remaining OEM fender liner fasteners.
- **(Figure I)** The front mud flap mounts with the logo facing the rear of the vehicle. Place the mud flap against the corresponding mounting points on the bracket passing small washers (SmWash) over the flap through the threaded bolts. Install lock nuts (SSLnut) on the two threaded mounting points. Thread a short screw (1SS) with small washer through the flap into the mounted insert (Ins). Tighten all points until snug. Do not over tighten.



Rear Mud Flap Installation

- **(Figure J)** Working from the rear of the vehicle, remove stock retainer from under the rear bumper area as shown. **Important: After removal, completely separate inner clip from outer assembly retainer.**
- **(Figure K)** Slide rear metal bracket between bumper and fender liner. Secure bracket by reinstalling outer assembly retainer into lower oval mounting hole of bumper, though mounting bracket and liner until flush. **Important: Install outer assembly without inner insert** as the liner may have shifted and could require realignment. Tap inner portion of insert into place to secure mounting bracket.
- **(Figure L)** Slide two supplied clips (PolCI) over stock mounting points in bumper. **Important: Lower clip mounts over both bumper and upper mounting point of metal bracket.**



- **(Figure M)** Place a supplied clip (PoCI) over the inner mounting point of the bracket.
- **(Figure N)** Position the rear mud flap with logo facing the rear of the vehicle. Using a short screw (1SS) and a large washer (Wash), bolt the mud flap to each mounting point. Be sure that the inner mounting point is not interfering with the wheel. If needed, adjust mounting point by angling the bracket towards the rear of the vehicle and away from the tire. Do not tighten mounting points. Adjust mud flap first.
- **(Figure O)** Align outer edge of the flap by incrementally adjusting the lower/upper portion of the flap and walking away from the vehicle until the flap is perpendicular to even ground. Tighten all mounting screws until snug against washer. Do not over tighten.



- Repeat the front and rear installation process for the other side of the vehicle to complete installation.