

2020+ Subaru Legacy Mud Flap Installation Instruction

View instructions and photos online

CARE AFTER INSTALLATION Once installed, the vehicle owner is responsible for the condition of the mud flaps and all costs associated with replacing damaged or lost parts. Warranty covers manufacturer defect on new, never installed parts.

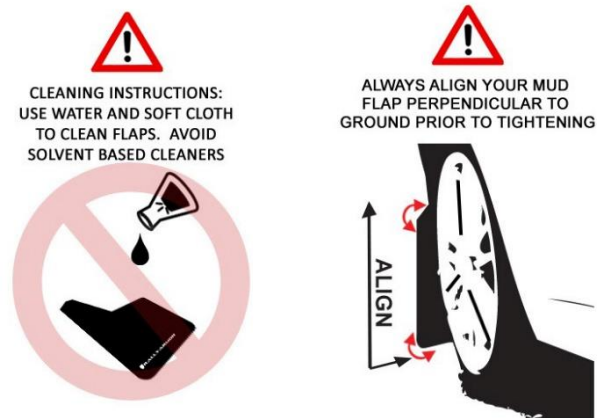
⚠ Watch for blind spots when parking ⚠ Avoid contact with curbs, bumps and objects that can compress the flaps with excessive force. Be sure to check wheel clearances, especially on vehicles equipped with aftermarket wheels and suspensions.

QUESTION ON INSTALLATION? CONTACT US ONLINE www.rallyarmor.com/support

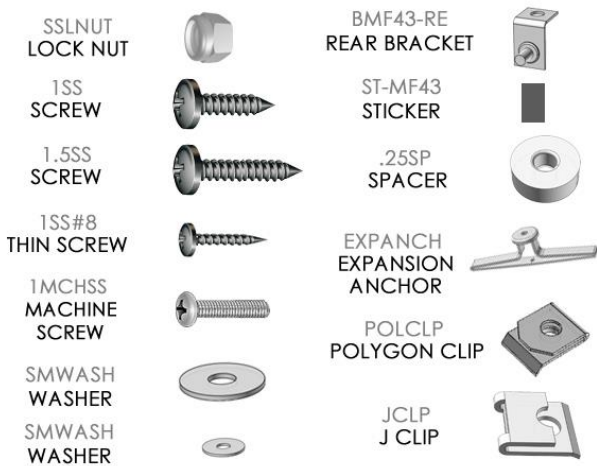
NEED TO PURCHASE REPLACEMENT PARTS? SEND RECEIPT OR PHOTO OF RALLY ARMOR LOGO ON FLAPS TO US www.rallyarmor.com/support

IMPORTANT NOTES

INSTALLATION KIT CONTENTS



QUANTITY	PART	ITEM ID
4	LOCK NUT	SSLNUT
2	MACHINE SCREW	1MCHSS
4	SCREW	1SS
2	LONG SCREW	1.5SS
4	THIN SCREW	1SS#8
12	WASHER	SMWASH
2	EXPANSION ANCHOR	EXPANCH
2	SPACER	.25SP
4	POLYGON CLIP	POLCLP
4	J CLIP	JCLP
2	REAR MOUNTING BRACKET	BMF43-RE
2	STICKER	ST-MF43



Recommended Tools Low-profile offset or ratcheting screw driver, 7/16th wrench, flathead screwdriver.

Important Tips Installation should be done on an even surface. Do not use power tools to tighten hardware. Hand tools only. Avoid overtightening.

RALLY ARMOR - A BIT ABOUT OUR STANDARD IN MUD FLAPS

Rally Armor mud flaps are fabricated from a high grade polyurethane plastic that is rigorously reviewed for quality and consistency. As with all manufacturing processes, controlled conditions and multiple QC checkpoints minimize major irregularities, however certain very minor surface layer marks appear periodically. These are visual variations that do not affect construction nor do they impede the performance of the flaps. Most matte away as the material ages naturally with continued exposure to the outdoors. Each flap is unique in appearance yet all are equally structurally sound.

2020+ Subaru Legacy Mud Flap Installation Instruction

FRONT MUD FLAP

Bracket & Hardware 1 x Front Flap → 2 x 1SS; 1 x 1.5SS; 1 x .25SP; 1 x EXPANCH; 2 x POLCLP; 3 x SMWASH

Turn the steering wheel towards the side you are working on to gain access to the inner wheel well area.

FIGURE A Remove factory fasteners 1-4. Coax liner away from the fender.

FIGURE B Angle POLYGON CLIP POLCLP over upper and lower fender mounting points.

FIGURE C Replace liner. Replace original upper liner fastener.

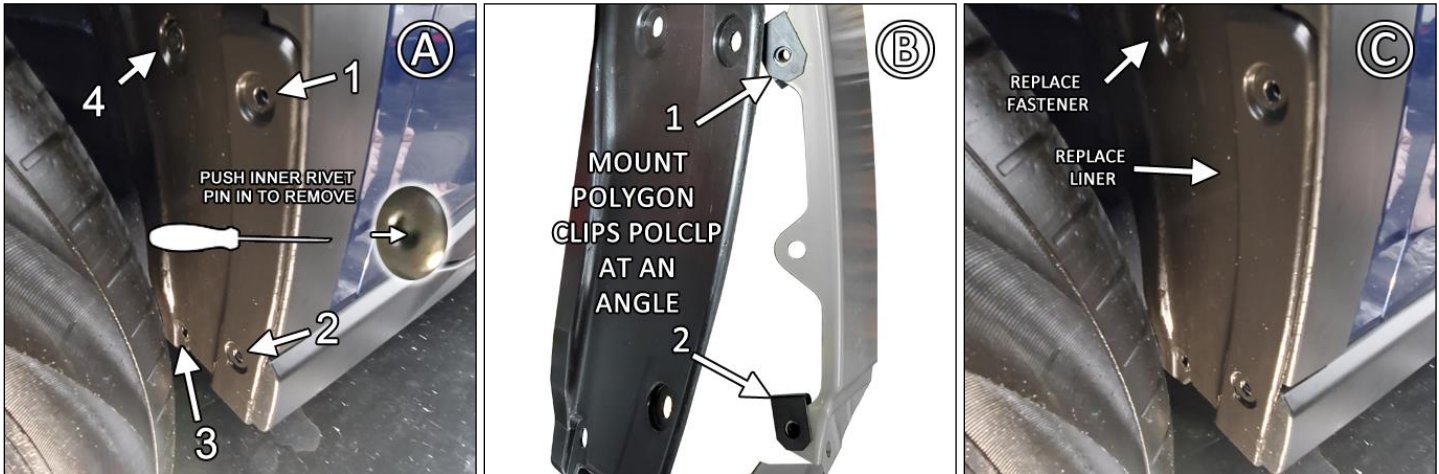
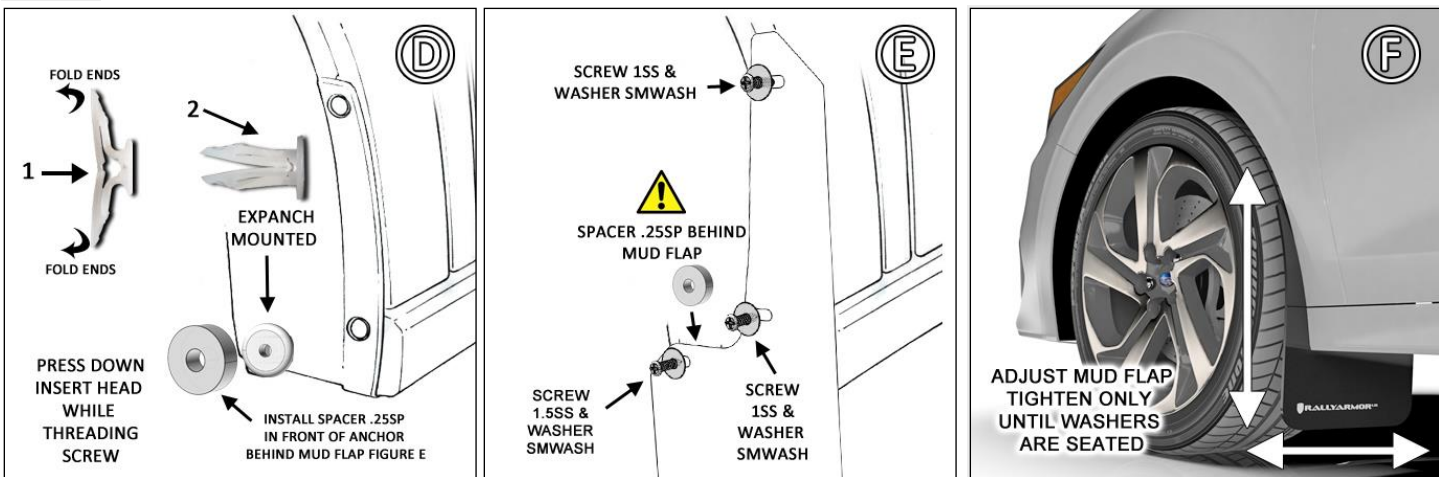


FIGURE D Noting placement of EXPANCH, SPACER.25SP installs in front of EXPANCH, behind mud flap. Fold EXPANCH ends, insert into factory mounting point.

FIGURE E Logo-side of flap faces rear of vehicle against the corresponding mounting points. Install two SCREW 1.5SS with WASHER SMWASH into respective outer mounting points. Innermost mount utilizes SCREW 1.5SS and SPACER .25SP BEHIND mud flap. Firmly depress EXPANCH to prevent spinning. **Do not tighten completely.**

FIGURE F Ensure mud flap is parallel to even ground. Hand tighten only until washers seated against flap. **Adjust as needed.**



2020+ Subaru Legacy Mud Flap Installation Instruction

REAR MUD FLAP

Bracket & Hardware 1 x Rear Flap → 1 x BMF43-RE; 1 x 1MCHSS; 2 x 1SS#8; 2 x JCLP; 3 x SMWASH; 2 X SSLNUT; 1 x ST-MF43

FIGURE G Clean then adhere STICKER ST-MF43 against REAR BRACKET BMF43-RE.

FIGURE H Remove factory fasteners 1 - 3.

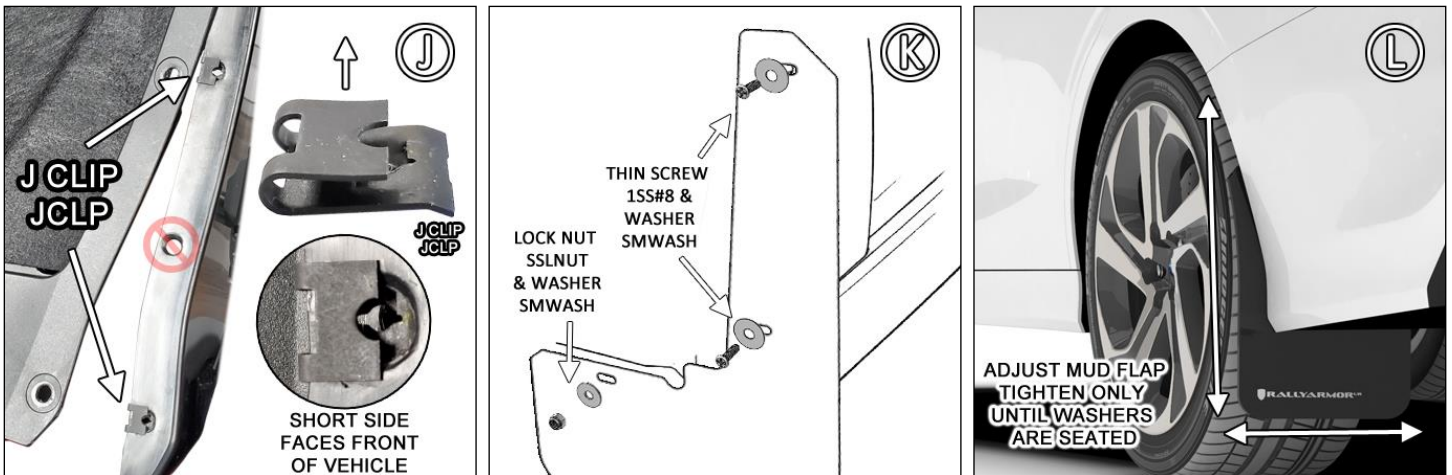
FIGURE I Mount BRACKET to lower liner using MACHINE SCREW 1MCHSS and LOCK NUT SSLNUT, stud on bracket facing front of vehicle.



FIGURE J Install two J CLIP JCLP to bumper mounting points. Re-install liner and underside factory fastener.

FIGURE K Logo-side of flap faces rear of vehicle against the corresponding mounting points. Install two THIN SCREW 1SS#8 with WASHER SMWASH onto respective mounting points. Inner mount utilizes LOCK NUT and WASHER. **Do not tighten completely.**

FIGURE L Ensure mud flap is parallel to even ground. Hand tighten only until washers seated against flap. **Adjust as needed**



IMF64



2020+ Subaru Legacy Mud Flap Installation Instruction

FRONT REAR MF64 MOUNTING DIAGRAM

