



2019-21 SUBARU FORESTER MUD FLAP INSTALLATION INSTRUCTIONS

View instructions and photos online www.rallyarmor.com

CARE AFTER INSTALLATION Once installed, vehicle owner is responsible for condition of mud flaps and all costs associated with replacing damaged or lost parts. Warranty covers manufacturer defect on new, never installed parts.

⚠ Watch for blind spots when parking ⚠ Avoid contact with curbs and objects that compress flaps with excessive force.

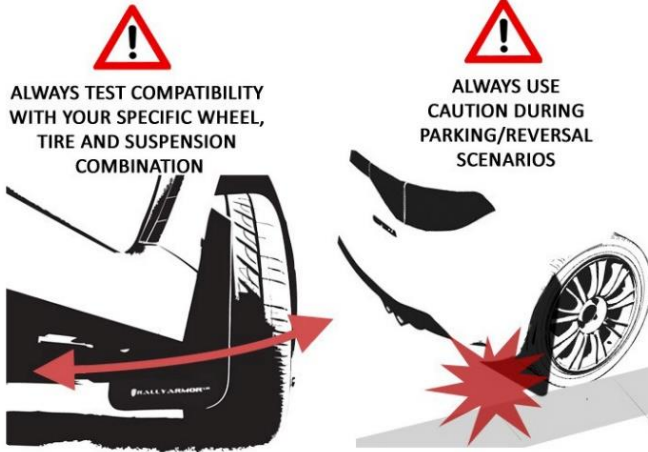
Check wheel clearances, especially on vehicles equipped with aftermarket wheels and suspensions.

QUESTION ON INSTALLATION? CONTACT www.rallyarmor.com/support

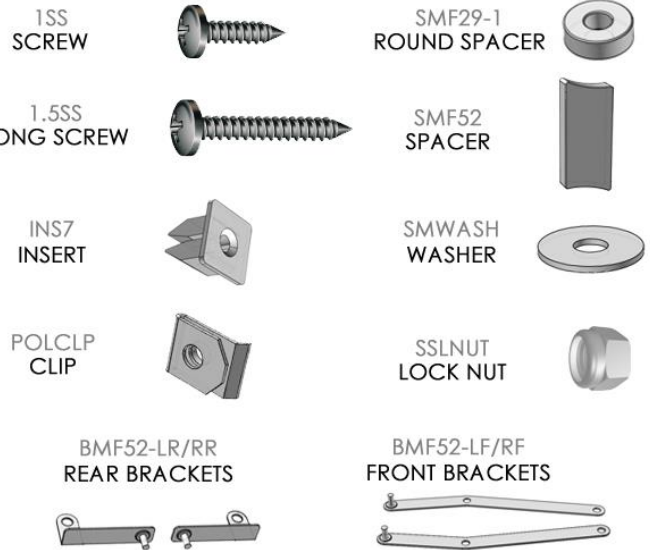
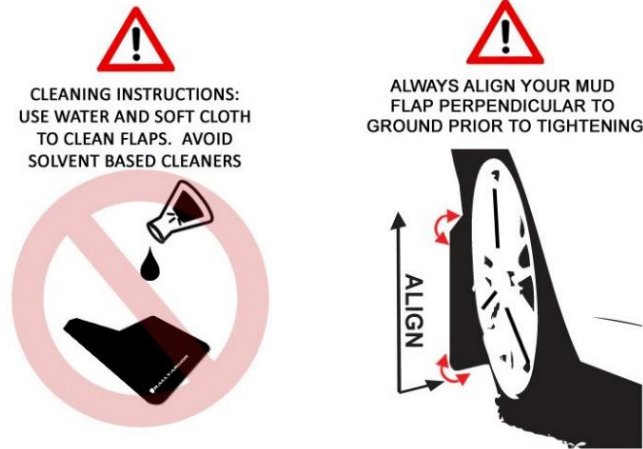
NEED TO PURCHASE REPLACEMENT PARTS? SEND RECEIPT OR PHOTO OF MUD FLAPS TO www.rallyarmor.com/support

IMPORTANT NOTES

INSTALLATION KIT CONTENTS



| QUANTITY | PART | ITEM ID |
|----------|---------------------|----------|
| 6 | SCREW | 1SS |
| 6 | LONG SCREW | 1.5SS |
| 2 | INSERT | INS7 |
| 10 | CLIP | POLCLP |
| 6 | ROUND SPACER | SMF29-1 |
| 2 | SPACER | SMF52 |
| 16 | WASHER | SMWASH |
| 4 | LOCK NUT | SSLNUT |
| 1 | BRACKET LEFT FRONT | BMF52-LF |
| 1 | BRACKET RIGHT FRONT | BMF52-RF |
| 1 | BRACKET LEFT REAR | BMF52-LR |
| 1 | BRACKET RIGHT REAR | BMF52-RR |



Recommended Tools Low-profile offset or ratcheting screwdriver, 7/16th wrench, flathead screwdriver.

Important Tips Installation should be done on an even surface. **Do not use power tools to tighten hardware. Hand tools only. Avoid overtightening.**

RALLY ARMOR - A BIT ABOUT OUR STANDARD IN MUD FLAPS

Rally Armor mud flaps are fabricated from a high grade polyurethane plastic that is rigorously reviewed for quality and consistency. As with all manufacturing processes, controlled conditions and multiple QC checkpoints minimize major irregularities, however certain very minor surface layer marks appear periodically. These are visual variations that do not affect construction nor do they impede the performance of the flaps. Most matte away as the material ages naturally with continued exposure to the outdoors. Each flap is unique in appearance yet all are structurally sound.

2019-21 SUBARU FORESTER MUD FLAP INSTALLATION INSTRUCTIONS

FRONT MUD FLAP INSTALLATION

1 Front Flap Bracket & Hardware → BMF52-LF/RF; 3 x 1.5SS; 3 x POLCLP; 3 x SMF29-1; 1 x SMF52; 4 x SMWASH; 1 x SSLNUT

To access inner wheel well area, turn steering wheel towards installation side.

FIGURE A To access interior fender well, temporarily remove 4 factory fasteners then pull liner away.

FIGURE B Install CLIP POLCLP over mounts 1 - 3. POLCLP for mount 1 installs **behind** plastic side skirt, over metal fender. So POLCLP do not shift, use caution when reinstalling factory fasteners 1 - 4.

FIGURE C Clean and dry liner well. Stick SMF29-1 ROUND SPACER over mounts 1 - 3. Position SMF52 SPACER to the shape of upper liner, then adhere.

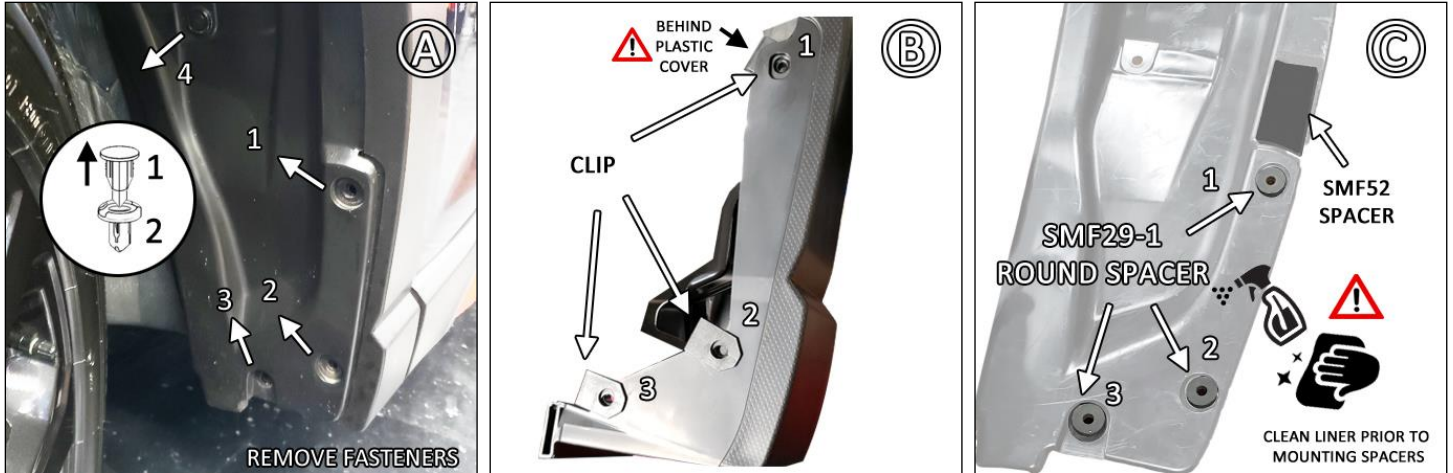
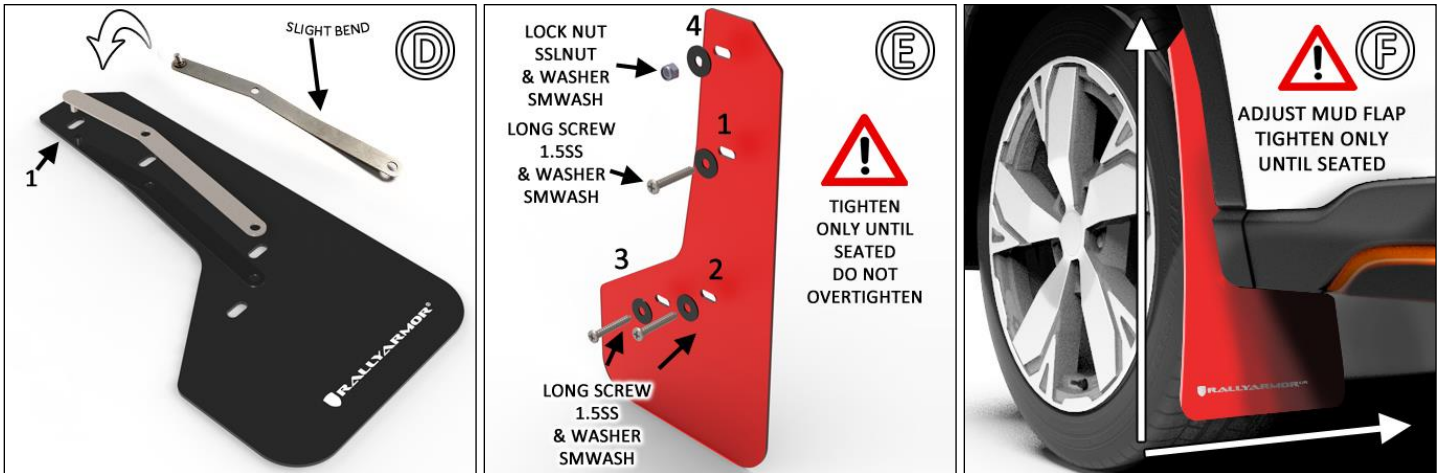


FIGURE D Gently bend bottom of BMF52-LF/RF to conform to wheel well. Place bolt-end of bracket over logo-side of flap through mount 1.

FIGURE E Position bolt-end of bracket facing tire and flat side nesting SPACER. Install LONG SCREW 1.5SS through WASHER SMWASH for mounts 1 - 3. Avoid overtightening.

FIGURE F Make slight adjustments to align flap before tightening all mounting screws until fully seated.



REAR MUD FLAP INSTALLATION

1 Rear Flap Bracket & Hardware → BMF52-LR/RR; 3 x 1SS; 1 x INS7; 2 x POLCLP; 4 x SMWASH; 1 x SSLNUT

2019-21 SUBARU FORESTER MUD FLAP INSTALLATION INSTRUCTIONS

FIGURE G Locate OEM fastener on underbody of bumper, then pull fastener stem away from base first. Remove base.

FIGURE H Install INSERT INS7 under liner then place bumper skin over. Press into mounting hole.

FIGURE I Place BMF52-LR/RR over bumper skin where INS7 is visible through mount, then install SCREW 1SS and WASHER. Tighten until bracket conforms to liner.

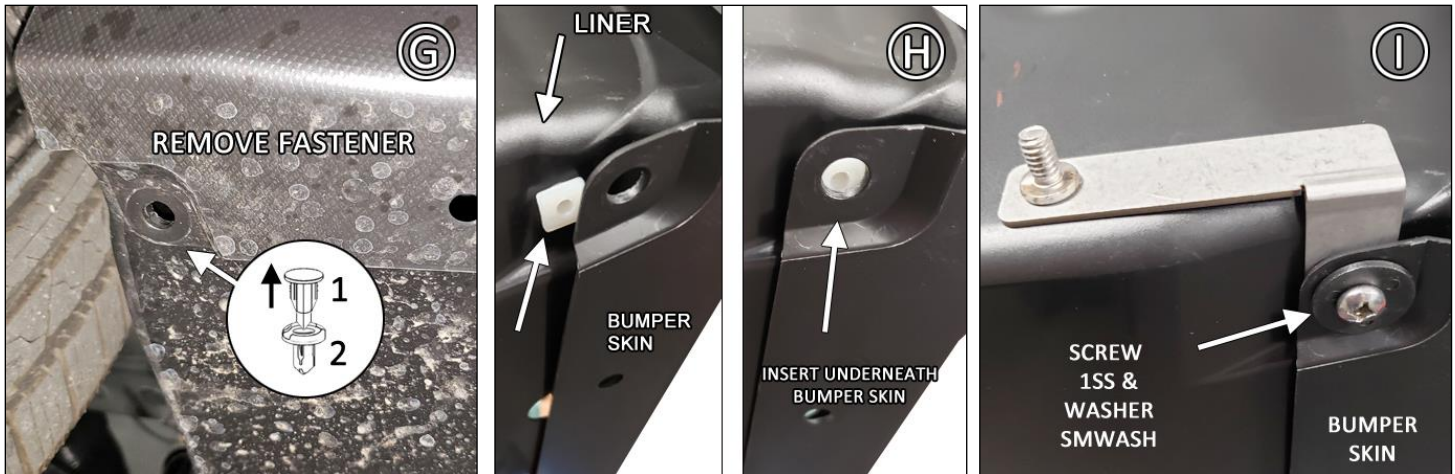
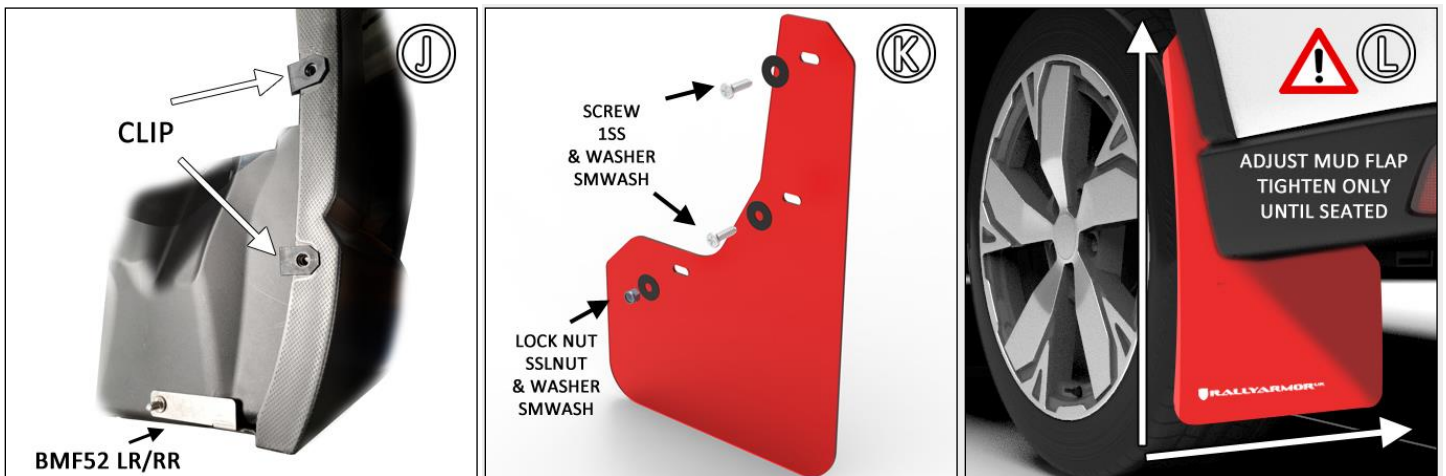


FIGURE J Install CLIP POLCLP over both mounting points on bumper.

FIGURE K Logo-side of flap facing liner, fasten WASHER and SCREW for top 2 mounting points. For bolt-end of bracket, install WASHER and LOCK NUT. Avoid overtightening.

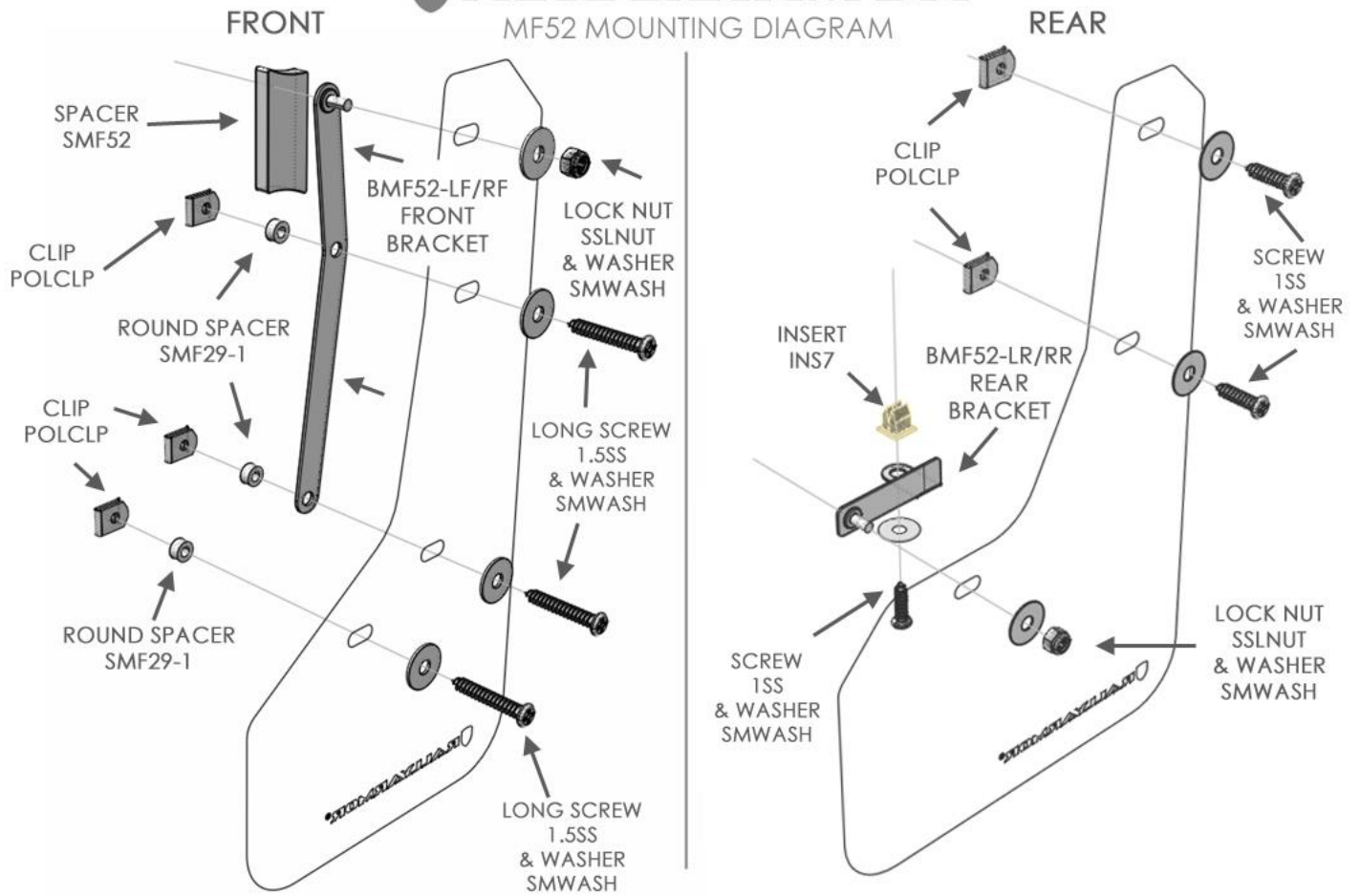
FIGURE L Make slight angle adjustments to flap before hand-tightening fasteners, just until seated.



IMF52



2019-21 SUBARU FORESTER MUD FLAP INSTALLATION INSTRUCTIONS



Content and images are copyright of Rally Armor® LLC