

IMF18



2022+ RIVIAN R1T Installation Instructions

View instructions and photos online www.rallyarmor.com

CARE AFTER INSTALLATION Once installed, vehicle owner is responsible for condition of mud flaps and all costs associated with replacing damaged or lost parts. Warranty covers manufacturer defect on new, never installed parts.

- ⚠ Watch for blind spots when parking
- ⚠ Avoid contact with curbs and objects that compress flaps with excessive force. Check wheel clearances, especially on vehicles equipped with aftermarket wheels and suspensions.

INSTALLATION QUESTIONS? EMAIL www.rallyarmor.com/support

NEED TO PURCHASE REPLACEMENT PARTS? EMAIL RECEIPT OR PHOTO OF MUD FLAPS www.rallyarmor.com/support

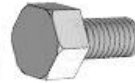
IMPORTANT NOTES



INSTALLATION KIT CONTENTS

QUANTITY	PART	ITEM ID
2	BOLT	1030-SSHXB
2	SPACER	.25SP
2	CLIP	RACLIP
2	WASHER	SMWASH
2	LOCK NUT	SSLNUT
2	BRACKET REAR	BMF18-RE

BOLT
1030-SSHXB



LOCK NUT
SSLNUT



SPACER
.25SP

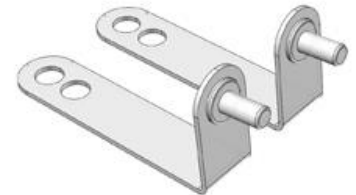


BRACKET REAR
BMF18-RE

CLIP
RACLIP



WASHER
SMWASH



Recommended Tools Low-profile offset, ratcheting, flat and Phillips screwdrivers, 7/16" wrench, 10 mm wrench, pick, TORX set.

Important Tips Installation should be done on an even surface. **Do not use power tools to tighten hardware.** Hand tools only. Avoid overtightening.

RALLY ARMOR - A BIT ABOUT OUR STANDARD IN MUD FLAPS

Rally Armor mud flaps are fabricated from a high grade polyurethane plastic that is rigorously reviewed for quality and consistency. As with all manufacturing processes, controlled conditions and multiple QC checkpoints minimize major irregularities, however certain very minor surface layer marks appear periodically. These are visual variations that do not affect construction nor do they impede the performance of the flaps. Most matte away as the material ages naturally with continued exposure to the outdoors. Each flap is unique in appearance yet are structurally sound.

2022+ RIVIAN R1T Installation Instructions

FRONT MUD FLAP

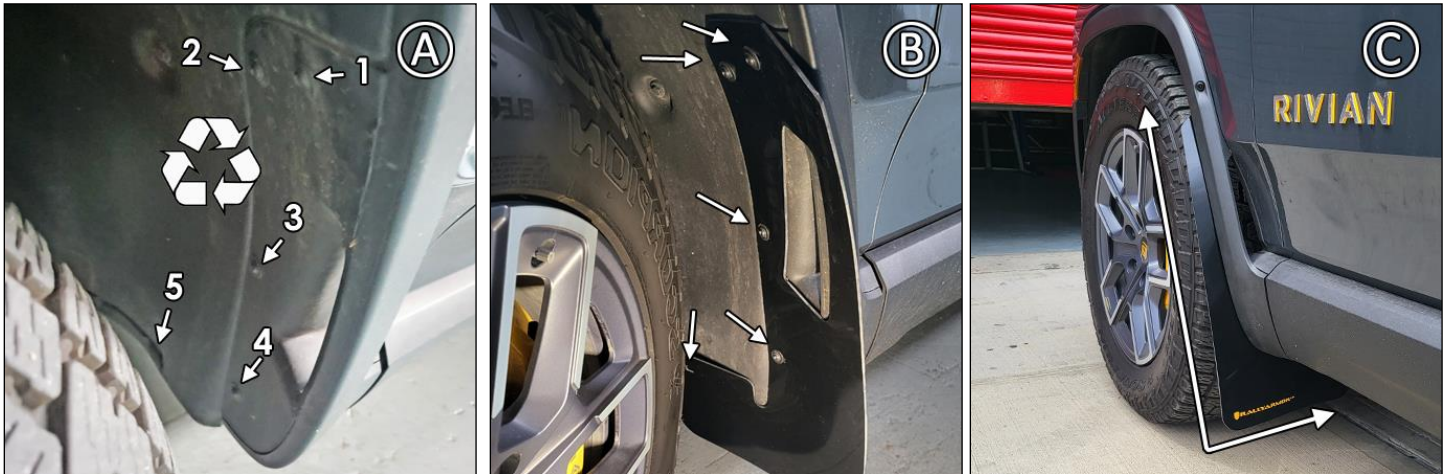
Hardware 1 x Front Flap → OEM FACTORY VEHICLE HARDWARE

Access interior wheel well by turning steering wheel towards the installation side.

FIGURE A Remove and retain 5 factory fasteners.

FIGURE B Place flap with logo facing vehicle rear, against liner mounting points. Remount factory fasteners through mud flap mounts.

FIGURE C Ensure mud flap is parallel to even ground before tightening washers just flush against flap. Avoid over-torquing.



REAR MUD FLAP

Bracket & Hardware 1 x Rear Flap → 1 x BMF18-RE; 2 x OEM FASTENERS & 1 x 1030-SSHXB; 1 x .25SP; 1 x RACLP; 1 x SMWASH; 1 x SSLNUT

FIGURE D/E Remove and retain bumper factory fasteners 1 & 2. Remove bolt 3, located under the chassis.

FIGURE F Bracket stud facing the tire, install 1030-SSHXB through BMF18-RE, .25SP and into mount 3.

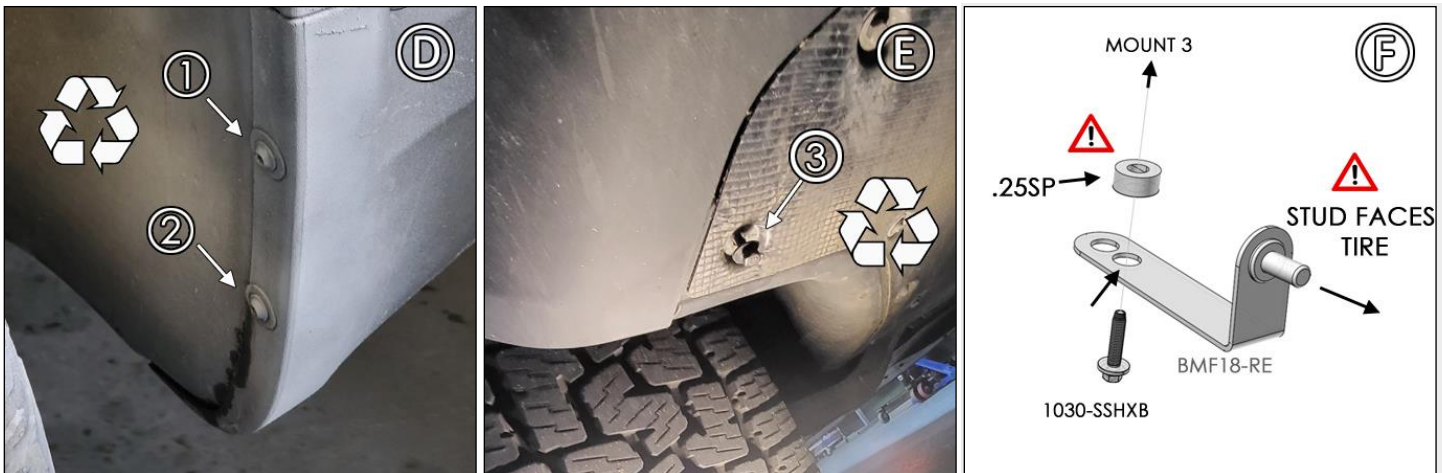


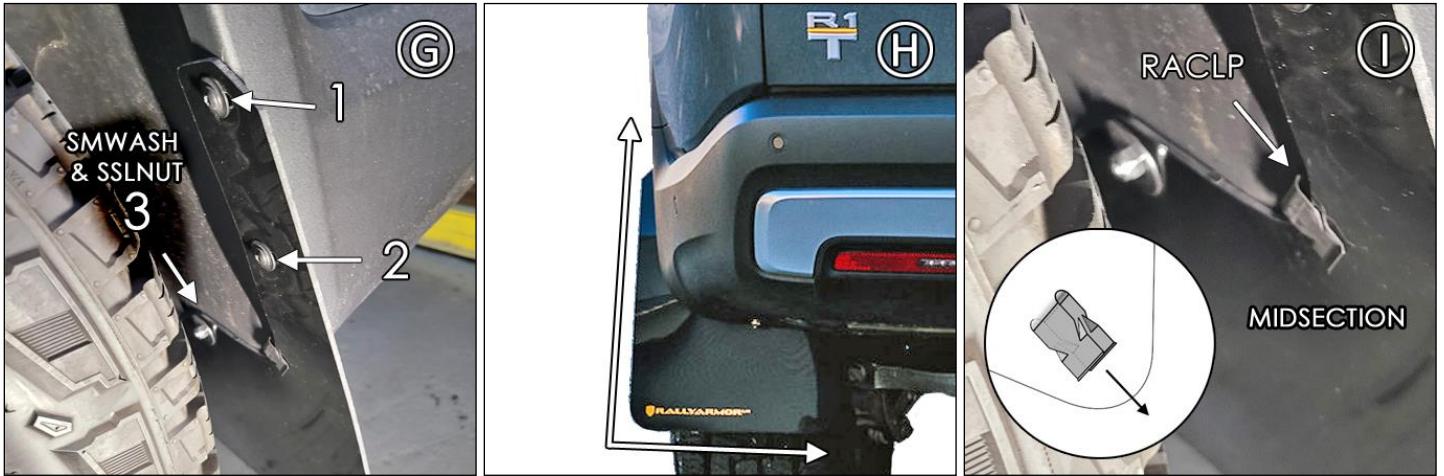
FIGURE G Position flap with logo facing vehicle rear against liner mounts. Loosely install factory fasteners into mounts 1 & 2. Use SMWASH and SSLNUT to secure mount 3.

IMF18



2022+ RIVIAN R1T Installation Instructions

FIGURE H/I Ensure flap is parallel to even ground, then install RACLP over mid-section of mud flap and **behind** the fender flare. Ensure mud flap is parallel to even ground before tightening washers just flush against flap. Avoid over-torquing.



FRONT



REAR

