

Fog Lamp Instructions

2006-2014 Ford F150 with round Fog Lamps

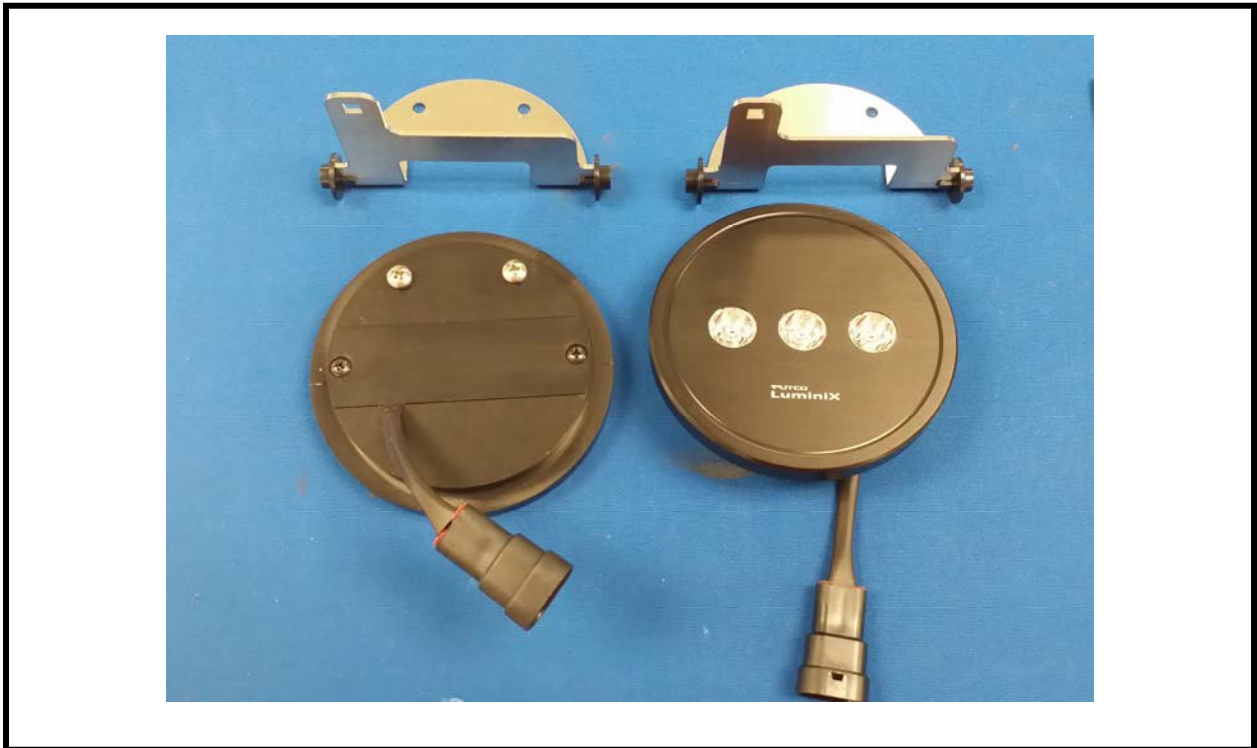
Table 1.0

KIT CONTENTS:	
Description	Qty.
4" Round Puck with Wiring Harness	2
Stainless Steel Mounting bracket with caps	2
10-32 X 3/8" Machine Screw (Factory Installed)	4
#10 Lock Washers (Factory Installed)	4

Tools Needed:

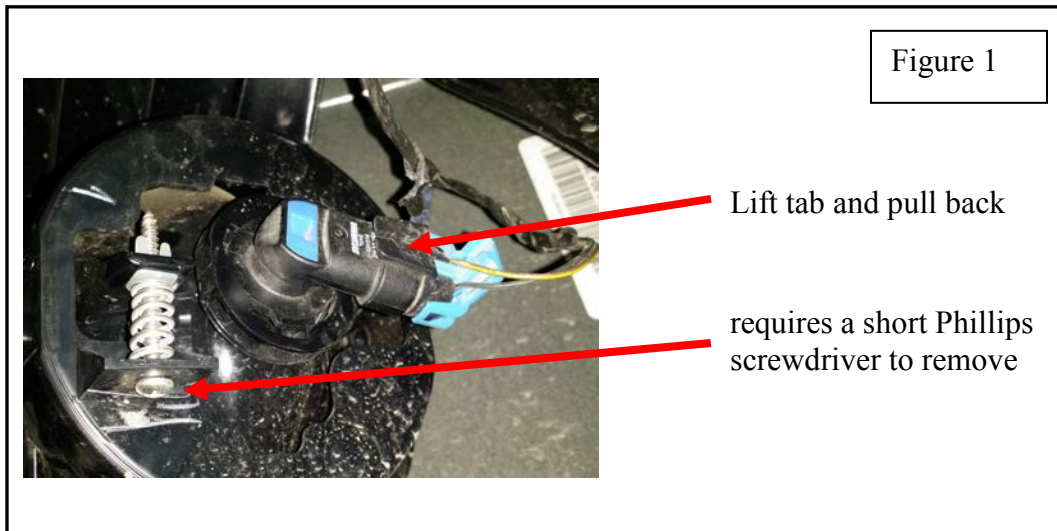
- Flat bladed screwdriver
- 3" #2 Phillips screwdriver

Before Installation Verify that all contents listed in Table 1.0 are included in your kit

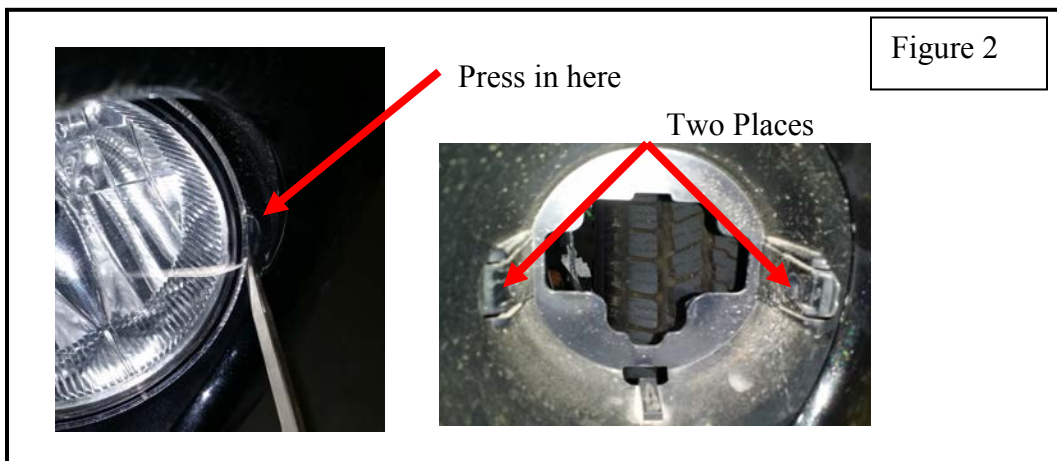


Fog Lamp Removal

1. From the backside of the bumper disconnect the factory wiring harness from the fog lamps. Refer to Figure 1
2. Remove adjusting screw and spring. Set aside as they will be required later. Refer to Figure 1



3. Use a flat bladed screwdriver to press out the tension clips on the fog lamp mounting bracket. Pull Fog Lamp out of housing from the front side of the bumper. Refer to Figure 2

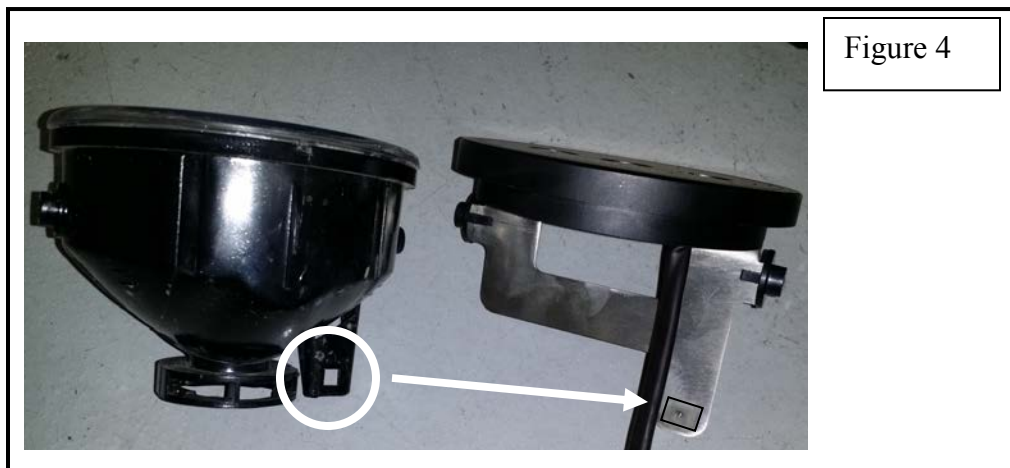


Fog Lamp Assembly

1. Remove Putco fog lamps from packaging. Check to see if all parts from Table 1.0 are included
2. Install Stainless Steel bracket on both fog lamps using the 4 10-32 X 3/8" screws and Lock washers provided (2 per lamp). Refer to Figure 3 for placement



3. Transfer Plastic insert from original Fog Lamps onto new Putco fog lamps. Ensure that the Flat side of the insert is facing towards the wiring harness side of the bracket as shown if Figure 4





Fog lamp Installation

1. From the front side of the bumper connect the factory wiring harness to the Putco fog lamps. Ensure that connector is fully engaged and can not be pulled back apart.
2. Turn on the fog lamps to ensure everything is working properly.
3. From the front side of the bumper line up the Putco fog lamp plastic endcaps with the corresponding tension clips on the vehicles fog lamp housing.
4. Push the fog lamps into the housing until the plastic caps snap into the fog lamp housing on both sides. Fog lamp should be able to swivel up and down if installed correctly.
5. From the backside of the bumper install the spring and adjusting screw. Refer to Figure 1 for reference
6. With the fog lamps on, adjust the screw on both lamps until the light is at the same height and are at the correct angle.