

# INSTALLATION INSTRUCTIONS

## PUTCO PURE ROOF LIGHTS

#900532, #900534, #900556 (DODGE)



Please note: You must follow these instructions to install the parts correctly otherwise damage may occur.  
Read all instructions before installation and check to see if all parts listed are included.

### KIT CONTENTS

Item#	Qty	Description
1	5	Pure Replacement Roof Light

### BOLT KIT CONTENTS

None

### RECOMMENDED TOOLS

#### Safety Tools

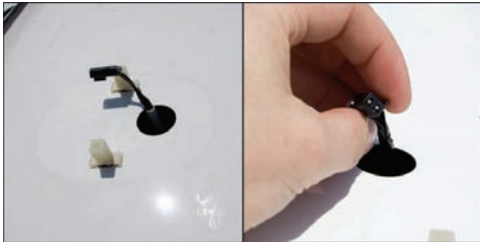
1. Eye Protection

#### Installation Tools

1. Screwdriver (Phillips head) or Torque drive
2. Pliers

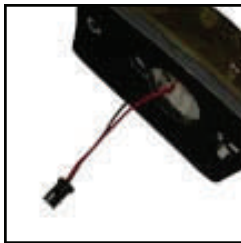
## REPLACEMENT ROOF LIGHT INSTALLATION INSTRUCTIONS

### 1 Remove existing side roof lights.



Locate the two bolts in each light and turn counter-clockwise to remove. Lift light assembly and unplug wiring. Remove light assembly completely from vehicle. Set bolts aside for later use.

### 2 Splice replacement light wires to factory wiring system.



Use included connectors to attach wires leading from Pure replacement light to factory wires. Splice the black wires together. After placing wires in connector squeeze shut with pliers.

### 3 Test replacement light functionality.

Turn on your vehicle's lights and check the Pure Roof Light installation before continuing. If lights do not function please reverse wiring connectors used in *Step #2*.

### 4 Complete replacement Pure roof lights installation.



Align bolt holes in each light assembly with mounting holes in the vehicle's roof. Insert bolts removed in *Step #1* and turn clockwise to finish light replacement.