

## 2015+ Ford F150 Hornet Light Installation Instructions

Please read all instructions before installation and to check to see that all parts are included.

KIT CONTENTS:	
Description	Qty.
Hornet Light	1
Bracket	1
10-32 Bolt	4
10-32 Nylock Nut	4
HD Unthreaded Bumper	2
8-32 Cap Bolt	2
8-32 Nylock Nut	2
12V Grounded Switch	1

### Tools Needed:

- 1/8" & 9/64" Allen Wrench
- 3/8" Wrench
- T20 Torx Driver

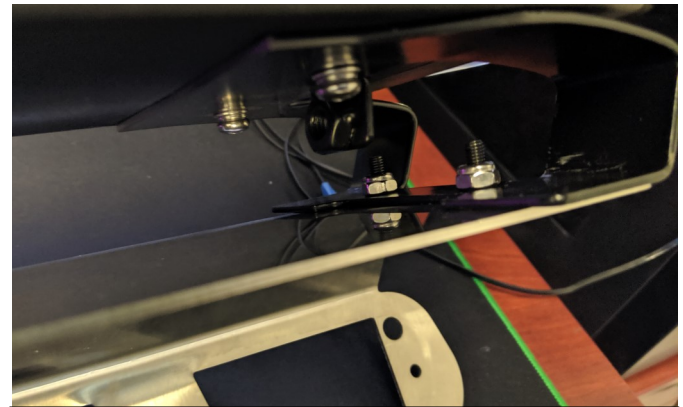


Figure 1—Installing Hornet Light onto bracket.

### Installation Instructions:

1. Remove items from packaging. Check to see if all parts from above table of contents are included.
2. With a T20 Torx driver, remove and keep the four screws holding in the 3rd brake light.
3. Remove the 3rd brake light by pulling outwards from the bottom of the light and unplugging the 3rd brake light from its harness.
4. Install the rubber bumpers onto the hornet light bracket using the included 8-32 bolts and nuts. Using the 9/64" Allen, set the nuts inside the bumper and squeeze to tighten onto the bracket as a socket will not fit inside the counter bore as seen in **Figure 2**.
5. Install the gasket onto the side of the bracket that will be facing into the truck. This can be seen in **Figure 3**.



Figure 2—Installing bumpers.

**NOTE:** If you have purchased a 24" Hornet light, at this point proceed to the other set of instructions included.

6. At this point, install the hornet light on to the mounting bracket using the 10-32 nuts and bolts. This will require the 1/8" Allen and the 3/8" wrench. (**Figure 2**)
7. Cut a small slot in the gasket to allow for the wire to feed through. Holding the light up to the bracket will give a good idea where to cut the slot to avoid pinching the wire. (**Figure 4**)

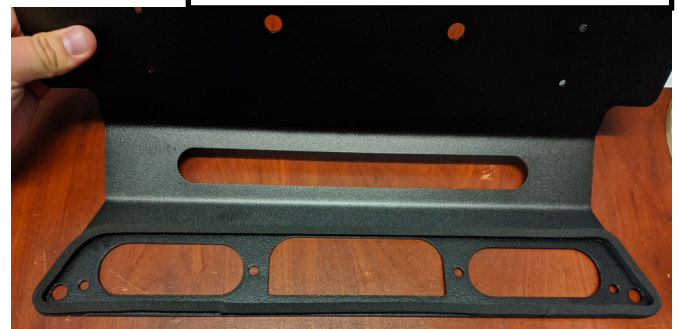


Figure 3—Gasket installation.

### Installation Instructions:

8. Feed the wire through the hole behind the 3rd brake light and route it through the cab to a suitable switch mounting location. (Figure 4)
9. Position the 3rd brake light on the bracket and reinstall the brake light taking care to reconnect the harness and not pinch the Hornet light cable. Installing and slightly tightening the two inside screws first aids in ease of installation. (Figure 5)

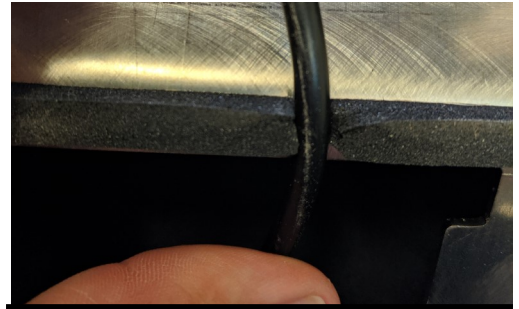


Figure 4—Cutting slot in gasket.

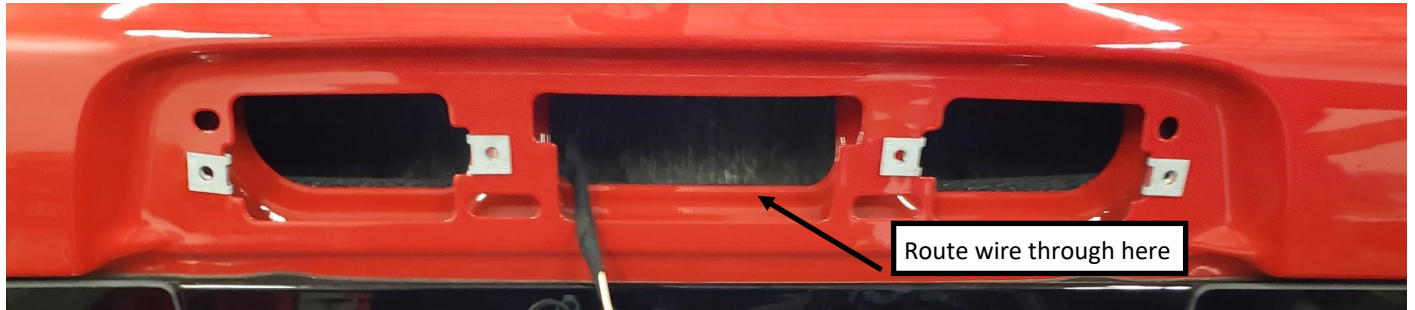


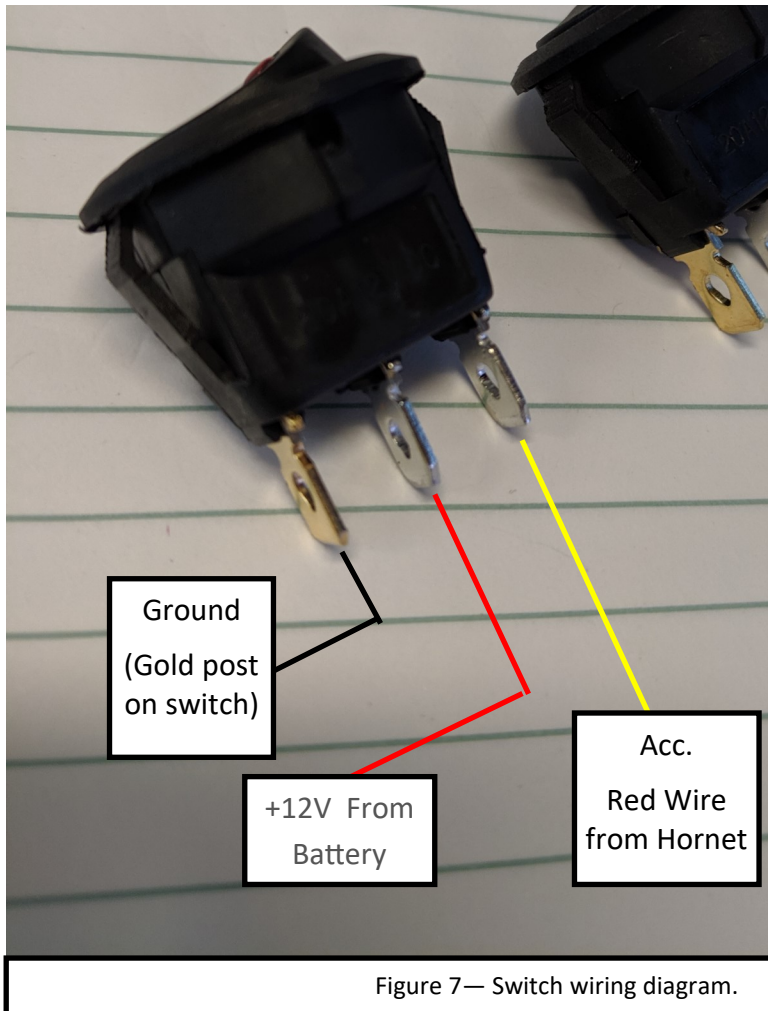
Figure 5—Wire routing.



Figure 6—Example of installed bracket.

10. To wire the switches properly, refer to the wiring diagram in **Figure 7** on the next page.

### Installation Instructions:



**NOTE:** When the switch is configured correctly it should function as follows: The primary switch, or the switch hooked up to the red wire, controls power to the Hornet light. This switch will turn the light on and off. To switch modes, the primary switch must be in the ON position. While the Hornet light is receiving power via the red wire, give 12V power to the yellow wire. If it does not change modes, check to make sure that the light is receiving power from the primary switch. The light will remember the mode even with the switch turned off.