

2015+ Chevy Silverado HD Bumper Grille Installation Instructions

Please read all instructions before installation and to check to see that all parts are included.

KIT CONTENTS:	
Description	Qty.
Bumper Grille	1
1/4"-20 Bolt	2
1/4"-20 Clip Nut	2
1/4" Lock Washer	2
Only for Lighted Grille (below)	
Light Bar (Installed)	1
Wiring Harness	1
Switch	1
Light Bar Installation Instructions	1

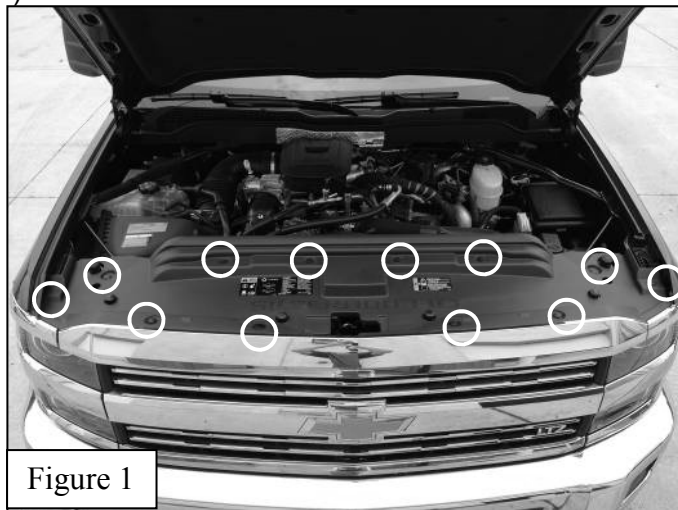
Tools Needed

- 10mm Socket
- 7/16" Wrench
- Flat-head Screwdriver

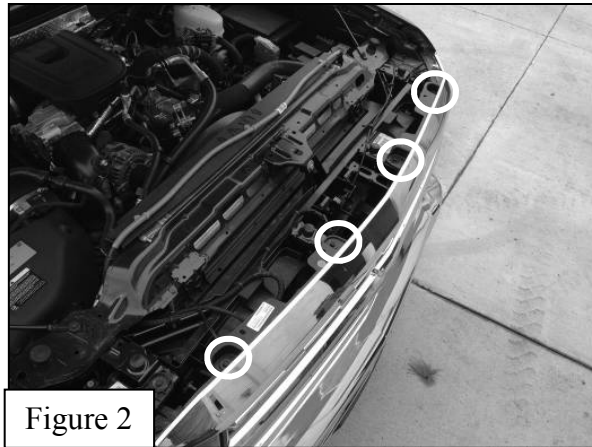
Bumper Grille Installation

Bumper grille installation requires removal of main grille prior to installation.

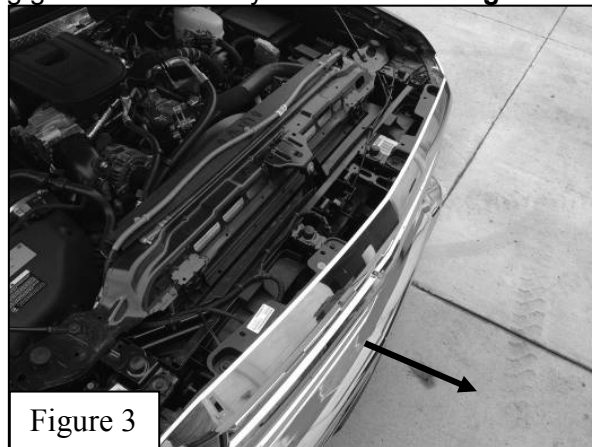
1. Remove bumper grille from packaging. Check to see if all parts from above table are included.
2. Remove plastic cover by removing 12 retaining clips with flat-head screwdriver (locations shown in **Figure 1**).



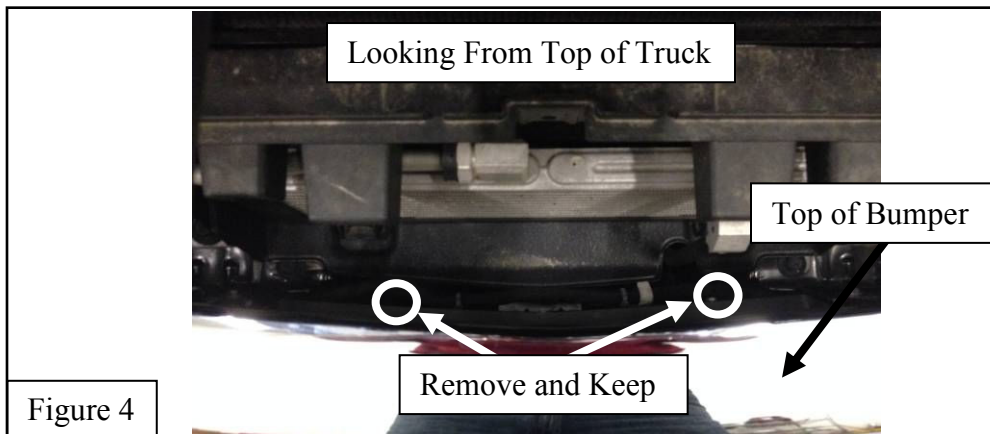
- Once cover is removed, remove the top 4 grille screws with 10mm wrench (locations shown in **Figure 2**).



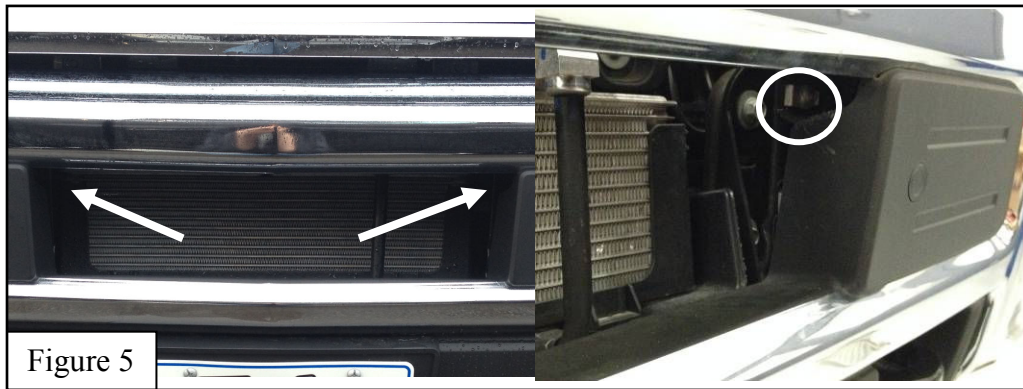
- Remove grille by pulling grille forward away from the truck. **Figure 3**



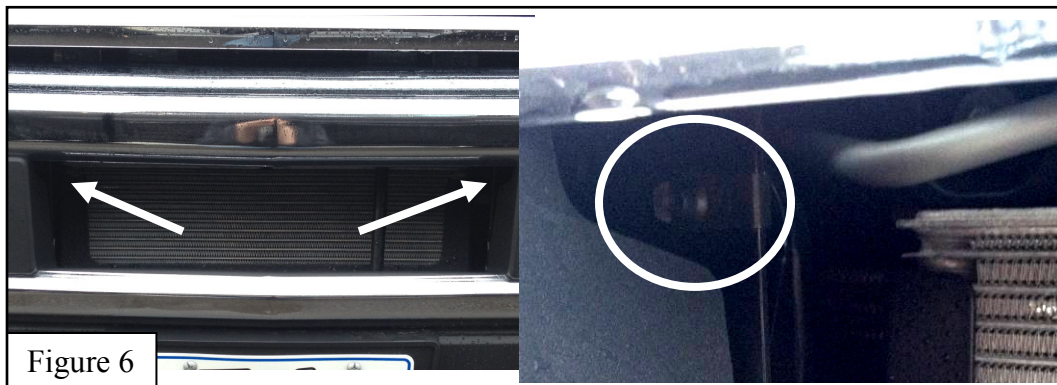
- On back side of the lower bumper, remove 2 factory bolts with 10mm socket and set aside for later use. Refer to **Figure 4** for bolt location.



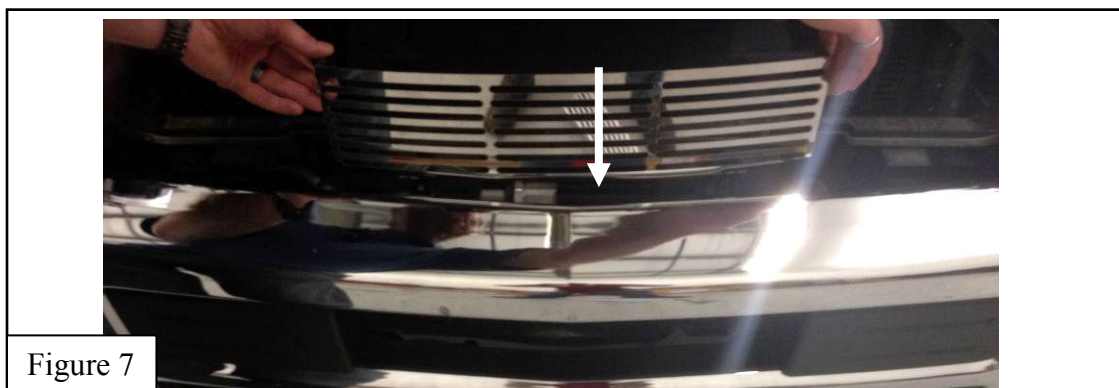
6. If truck has factory hardware in location shown in **Figure 5**, remove the two upper 10mm bolts shown and keep. If it does not have factory hardware move to **Step 7 (If truck has factory hardware, hardware supplied will not be used)**



7. Step 7 is only for trucks **without factory hardware** in locations shown in **Figure 5**. Slide 1/4"-20 clip nuts over black steel bracket in locations shown in **Figure 6** (2 Locations). (**Nut side of clip will face toward front of truck**)



8. Slide grille behind bumper from the top side and insert grille in to bumper opening. refer to **Figure 7**.





85195, 86195, 87195, 88195
87195L, 88195L

9. Reinstall lower factory bolts (bolts removed in **Step 4**) through the holes in the bumper grille's lower tabs and into the original threaded holes. Tighten down with 10mm socket.
10. If truck had factory hardware in **Step 6**, reinsert factory hardware through upper tab locations and into the original threaded holes. Tighten with 10mm wrench. If truck did not have factory hardware and **Step 7** was used, place supplied 1/4"-20 bolt and lock washer through upper tab location into clip nut installed in **Step 7**. Tighten with 7/16" wrench.
11. Reinstall factory grille and shroud. Enjoy!! (**For lighted bumper grilles wire up light bar before reinstalling factory grille**)

For lighted bumper grilles, refer to Light Bar Installation Instructions for wiring installation instructions.