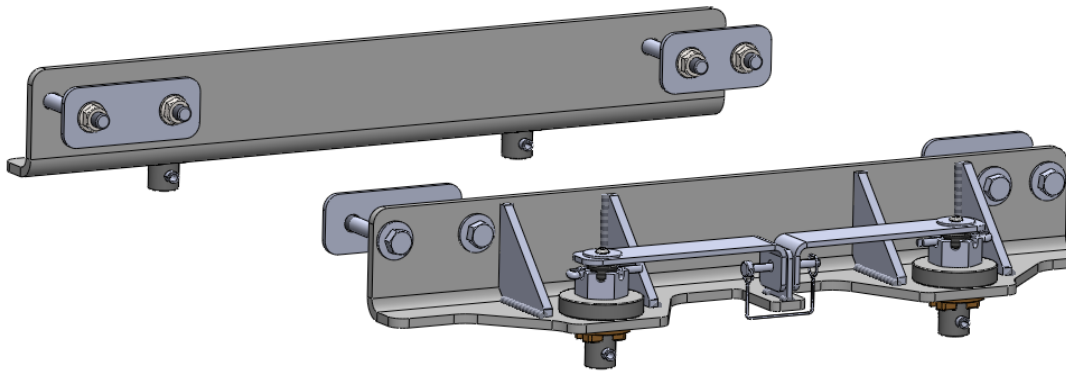




#4448 FORD

OE Puck Mounting Bracket Kit for SuperGlide #2700 & #2900



Gross Trailer Weight (Maximum) 18,000 lbs.
Vertical Load Weight (Max. Pin Weight)4,000 lbs.

SYSTEM TOW CAPACITY

Please note, in order to determine the total tow capacity of a system, you must consider the weight ratings of each component in that system. This includes, but may not be limited to, the capacity/rating of the tow vehicle, the fifth wheel hitch, and the hitch's mounting system. Actual tow capacity of the system will be equal to the lowest rated component.

Installation Instructions

SPECIFICATIONS

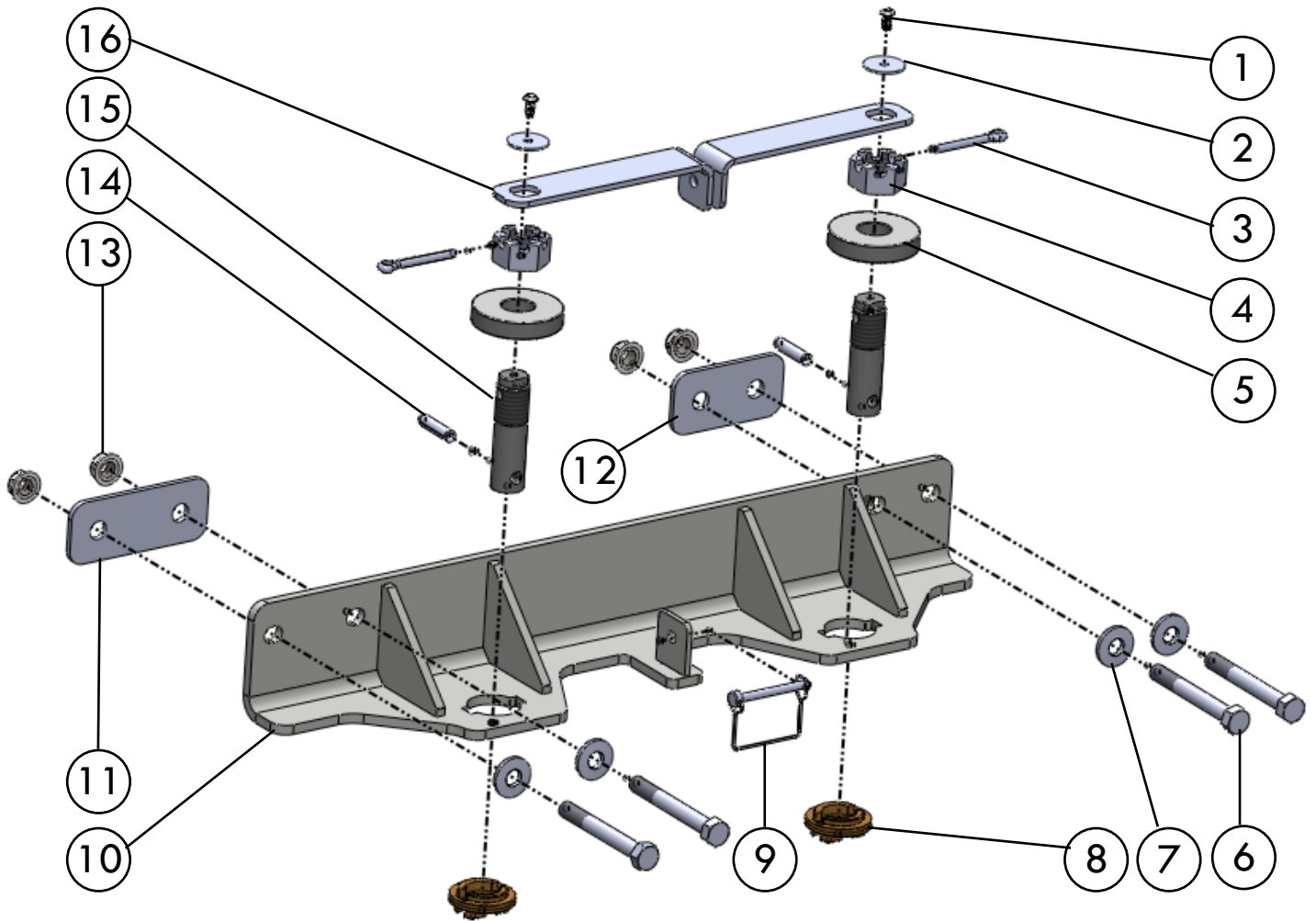
- Fits 2010-2019 Ford trucks with the OE 5th wheel hitch puck system
 - Attaches to SuperGlide models #2700 and #2900
- Custom Mounting Bracket Kit (Bracket & Hardware) #4448

TABLE OF CONTENTS



MOUNTING KIT EXPLODED VIEW MOUNTING KIT PARTS LIST
KIT PARTS LIST
ATTACHING KIT TO HITCH
BUILDING THE POST ASSEMBLY
INSTALLING HITCH INTO THE TRUCK BED

#4448 MOUNTING KIT EXPLODED VIEW

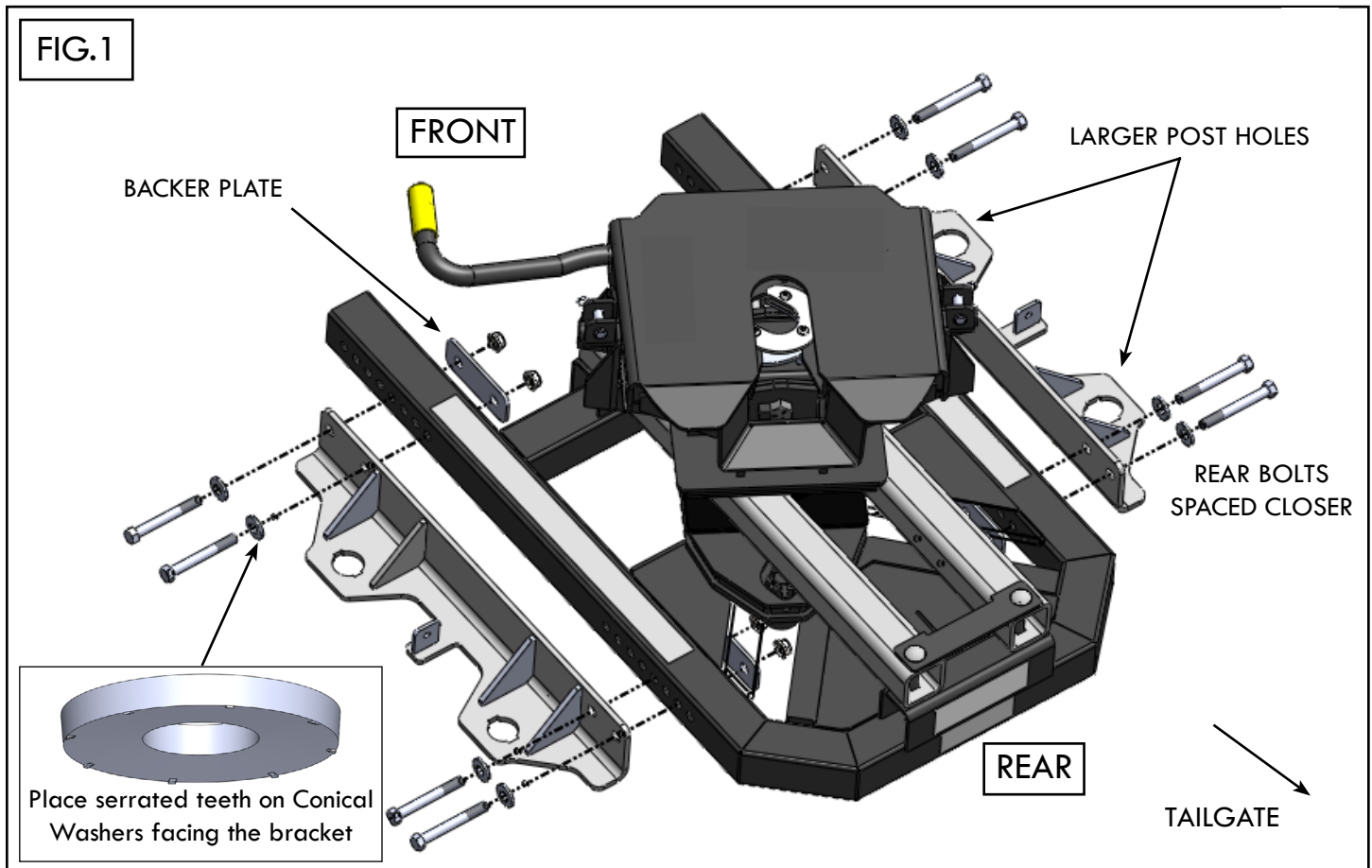


#4448 PARTS LIST

ITEM #	DESCRIPTION	PART NUMBER	QTY.
1	BUTTON HEAD SOCKET CAP SCREW 1/4"-20 X 1/2"	98410241	4
2	1/4" OVERSIZED FLAT WASHER	44480602	4
3	COTTER PIN 1/4" X 2"	98410567	4
4	CASTLE NUT 1"-14	98150121	4
5	BASE WASHER	13070101	4
6	HEX BOLT 1/2"-13 X 4"	98010191	8
7	CONICAL SERRATED WASHER 1/2 " ID X 1 1/4" OD	98200172	8
8	BRASS PUCK WASHER	13070001	4
9	BAIL PIN	98410529	2
10	DRIVER SIDE BRACKET	44480101	1
*	PASSENGER SIDE BRACKET (OPPOSITE SIDE, NOT PICTURED)	44480201	1
11	FRONT BACKER PLATE	44480107	2
12	REAR BACKER PLATE	44480106	2
13	SERRATED FLANGE NUT 1/2"-13	98150201	8
14	SLOTTED SPRING PIN 3/8" X 1 3/4"	98410524	4
15	OE FOOT POST	44480701	4
16	LOCK HANDLE	44480602	4

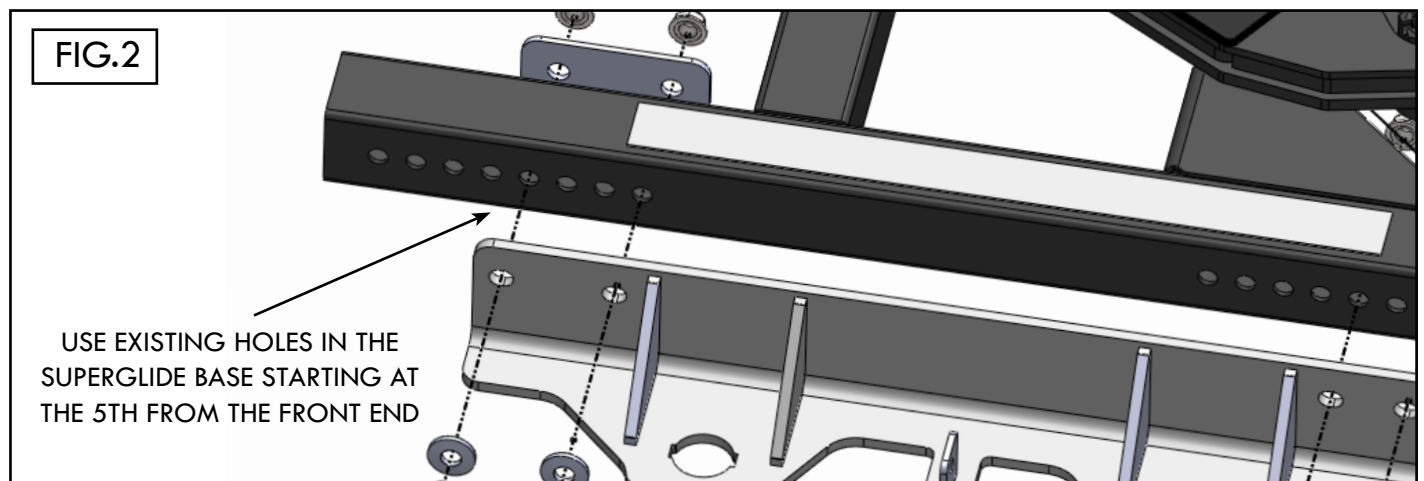
ATTACHING KIT TO HITCH

Note: The brackets are different and only work when properly installed on the hitch base. Notice the spacing is closer for the mounting bolts on the rear of both brackets (Fig.1) and post hole openings are larger on the passenger side.



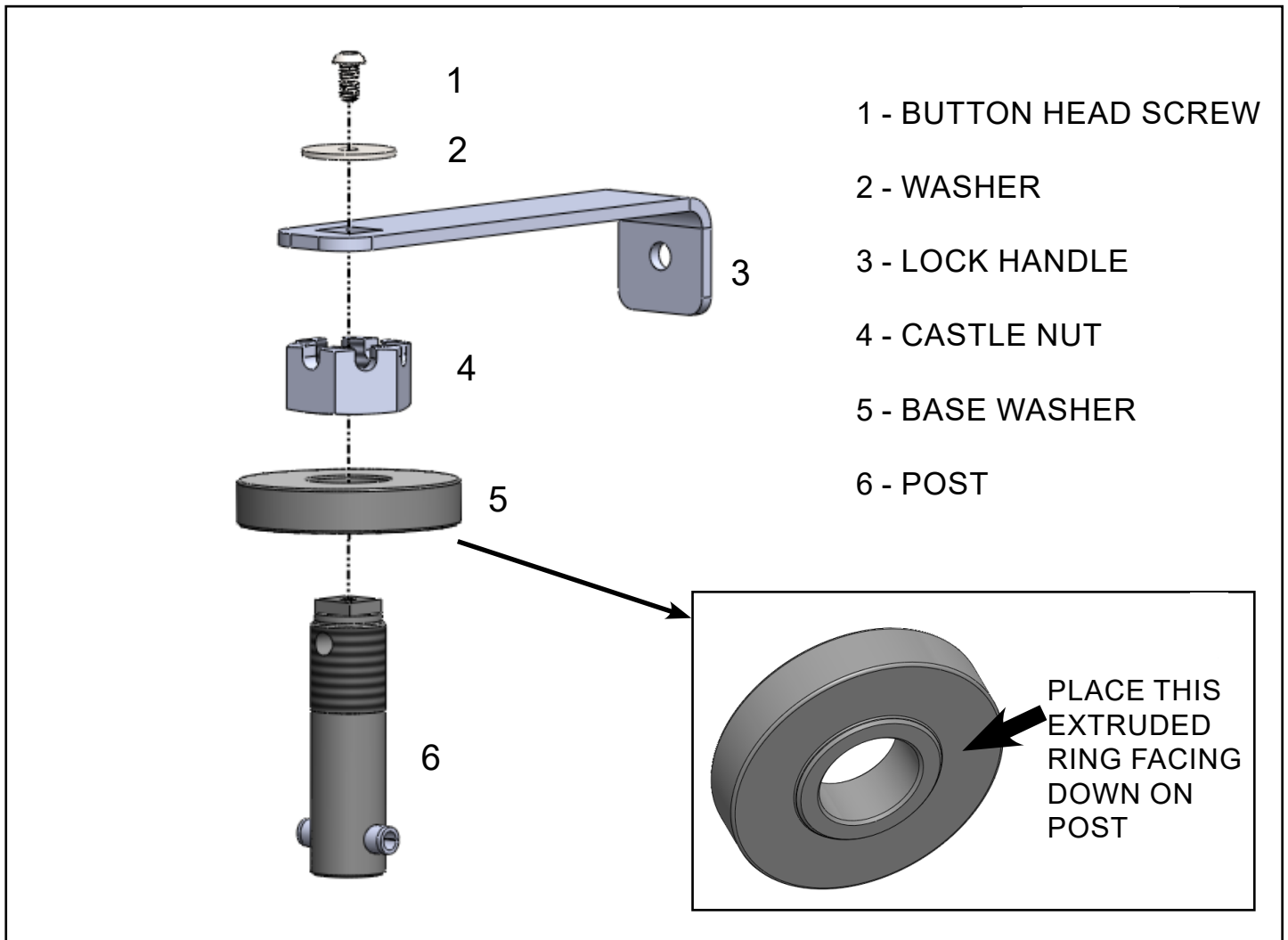
1. Place the kit brackets on the #2700 or #2900 SuperGlide base with Backer Plate and attach each using (2) 1/2-13 X 4 Hex bolts, (2) Conical Serrated Washers (see inset), and (2) 1/2"-13 Serrated Flange Nuts. Place brackets starting at the 5th hole from the front end on The SuperGlide base (Fig.2).

2. Hand tighten all hex bolts at this step.



BUILDING THE POST ASSEMBLY

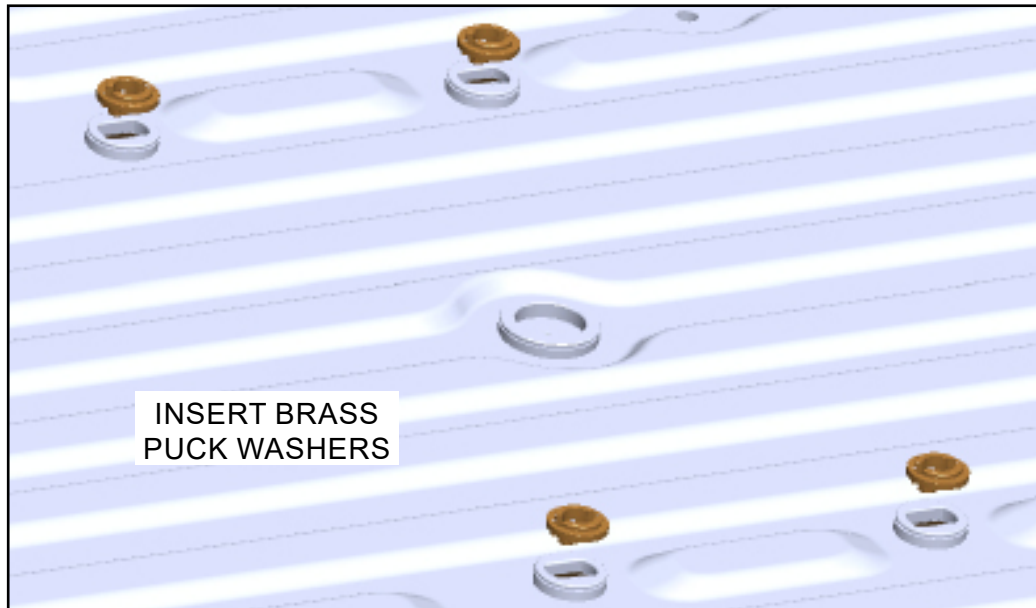
Build the (4) post assemblies used for clamping hitch to the bed of the truck.



1. Place the Base Washer with the extruded ring facing downward on the Post.
2. Thread Castle Nut onto the Post.
3. Take the Lock Handle and place on top of the Post, the handle cut-out fits down over square top on Post. Add the Washer and Button Head Screw and tighten with an 3/16 hex key.

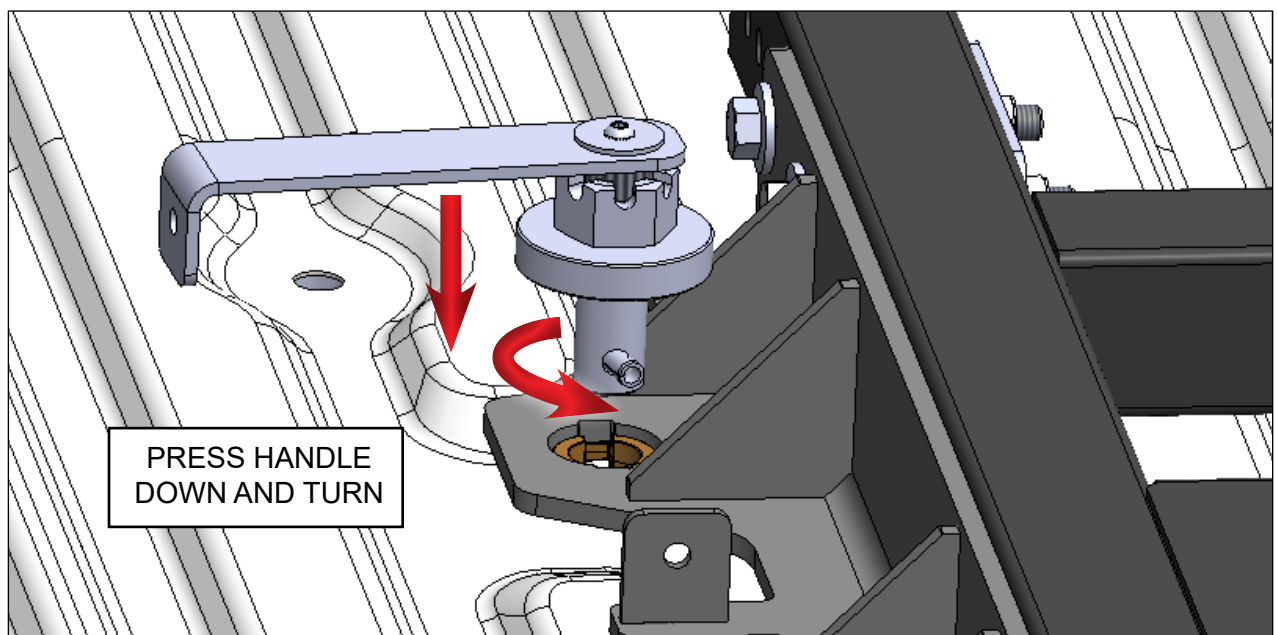
INSTALLING HITCH INTO THE TRUCK BED

FIG.3

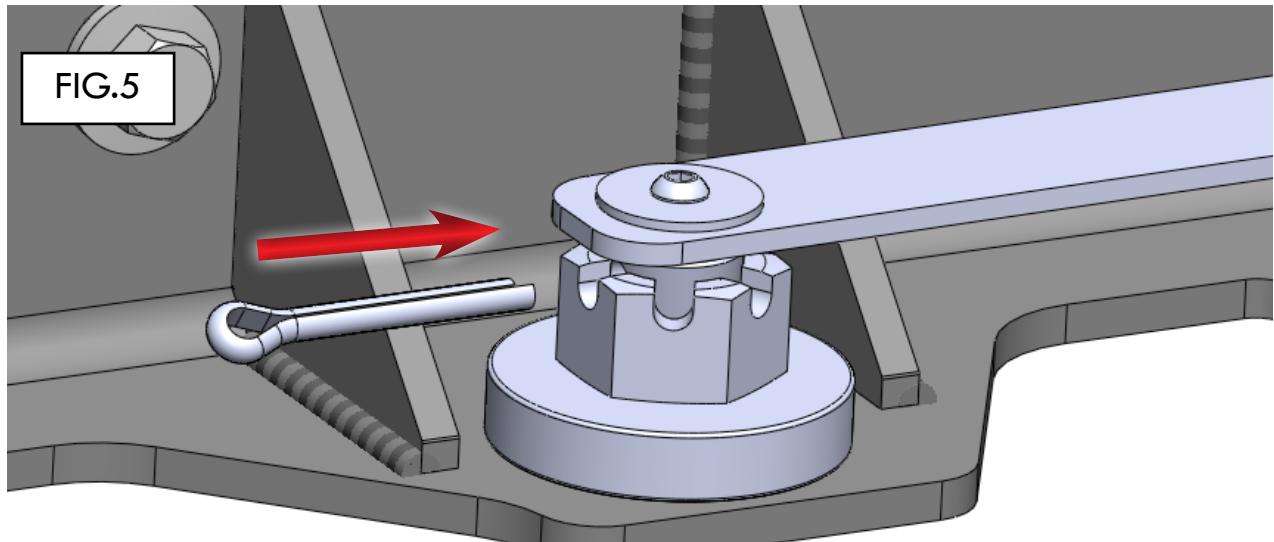


1. Place the (4) Brass Puck Washer in the *OE* pucks on truck bed (FIG.3). They should easily fit into the puck. In some instances, It may be necessary to lightly file the Brass Puck Washers to get them to fit as puck tolerances may vary.
2. Place the hitch over the seated Brass Puck Washers.They should all be visible through the post holes.
3. Starting with the driver side, take a Post Assembly and insert into the Brass Puck Washer in an open position as shown (FIG.4). Press and turn 90 degrees inward to the Lock Tab. At this point, tighten the Castle Nut on the Post Assembly just a few turns until it is firm.

FIG.4



INSTALLING HITCH INTO THE TRUCK BED



4. Feed the Cotter Pin through the Castle Nut and pre-drilled hole in the side of the Post (FIG.5). Bend ends of cotter pin to prevent it from sliding out. Repeat this step with the other Post Assemblies.
5. Align Lock Handles with hole in the Lock Tab (FIG.6). and place Bail Pins through each hole, snap bail pin to lock.
6. Tighten all 1/2"-13 X 4" Hex Bolts to 75 foot pounds.

