

PRO RYDE SUSPENSION SYSTEMS

EXACTLY THE WAY YOU WANT IT.

PRO RYDE ADJUSTABLE FRONT LIFT KIT INSTALLATION

JEEP JK

Patent Pending

IMPORTANT!

Read ALL WARNINGS and information contained in these instructions PRIOR to installing this product. Vehicle Owner MUST be provided the IMPORTANT VEHICLE OWNER'S INFORMATION section of these instructions after installation of this product.

Bill of Materials

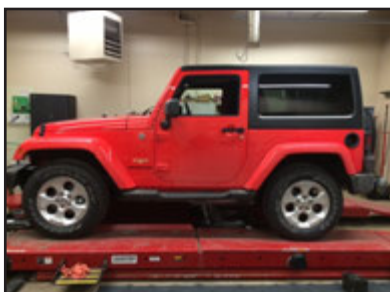
- (1) Installation Instructions & Warnings**
- (2) Adjustable 4-Piece Upper Coil Spacers & Hardware**
- (2) Lower Shock Extenders & Hardware**
- (2) Brake Line Relocators & Hardware**
- (2) Caster/Pinion Cam Bolts**



ALWAYS WEAR PROPER EYE PROTECTION & USE TOOLS SPECIFIC TO THE JOB!

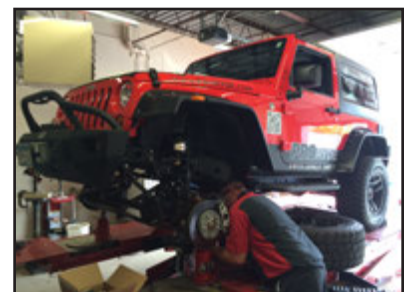
STEP 1: On a flat, level surface, MEASURE pre-installation ride height, FRONT & REAR, and write down measurements.

Front (L) _____
 Front (R) _____
 Rear (L) _____
 Rear (R) _____



STEP 2: Position vehicle on a stable, flat surface or automotive lift.

Suspend front wheels, lifting by the frame. Secure with jack stands & wheel chocks. Be sure engine is turned OFF and vehicle is in PARK.



STEP 3: Support lower control arm & spindle assemblies, then remove front wheels.



STEP 4: Unclip lower ABS, vacuum & brake line brackets to the frame.



STEP 5: Disconnect one end of each front sway bar link.



STEP 6: Install coil spring clamps, if available. This will simplify removal & re-installation of coil springs.



STEP 7: Remove lower front shock hardware and retain for reinstallation in step 14.



STEP 8: CAREFULLY lower front axle, then remove OE coil spring, and OE upper rubber insulator. **RETAIN OE INSULATOR FOR REINSTALLATION IN STEP 11.**



STEP 9: Determine your desired front lift height from 1.5" to 3.0", combining spacers as required. The largest spacer w/ logo should always be the **LOWEST** spacer installed. The actual lift value will be the same as the thickness of the combined spacers.



STEP 10: Install spacers over front bump stop, largest spacer at bottom, and secure to the coil spring pocket with included bolt & nut hardware.



STEP 11: Reinstall OE rubber insulator, removed in Step 8, as shown.



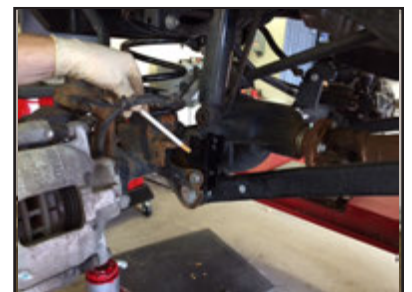
STEP 12: Install the new coil spring and OE upper rubber insulator. Torque hardware to OE specifications in your chosen orientation.



STEP 13: ? Remove coil spring hooks, if utilized in previous steps.



STEP 14: Install lower shock extenders. As shown, you have two height options, depending on the amount of front lift chosen in Step 9. Torque hardware to OE specifications in your chosen orientation.



STEP 15: Install brake line relocater brackets on each side of vehicle using included hardware, as shown.



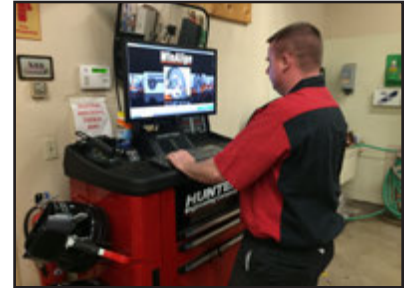
STEP 16: Install caster/pinion angle cam bolts, included with this kit. Wheel alignment will be required after installation is complete.



STEP 17: Reconnect sway bar links, then reinstall tire/ wheel assembly. Check that ALL suspension components and lug nuts have been properly torqued to manufacturer's specs.



STEP 18: Perform a complete wheel alignment, utilizing a Certified Alignment Technician with experience working on lifted vehicles. ADJUST HEADLIGHTS to accommodate new front ride height position.



BEFORE:



AFTER:



IMPORTANT! Check all fasteners for proper torque. Check to insure there is adequate clearance between all rotating, mobile, fixed and heated members. Check steering for interference and proper working order. Test brake system.

Complete a full 4-corner lift and install a ProRYDE SuperBLOK ADJUSTABLE rear [Lift Kit!](#)



IMPORTANT VEHICLE OWNER'S INFORMATION

JEEP JK

Patent Pending

Under no circumstances should this product be altered to adjust ride height beyond its design limits. Remember! Any change to ride height will affect vehicle's Wheel Alignment and Handling! Always realign the vehicle any time ride height is adjusted, and be sure to adjust headlights as necessary.

WARNING

This product should only be installed and adjusted by an ASE certified professional mechanic with proper tools and safety equipment.

Installation of this product modifies vehicle ride height. The driver of this vehicle should avoid unnecessary or abrupt maneuvers, sharp turns and other driving conditions that could lead to rollover or other serious accident. This product will affect vehicle center of gravity resulting in less than the original OE stability characteristics.

The manufacturer of this product releases itself from any liability or consequence, inclusive but not limited to personal injury, failure of components or damage to vehicle or person as a result of installing this product.

Warranties may be declined for any parts installed by any person other than an ASE certified professional. No warranty will be made for any other OEM or aftermarket components that may be affected by the installation of this product either in use or during installation. This kit is intended for use on stock suspensions WITHOUT any previous modifications whatsoever. Installation of this kit in conjunction with other aftermarket products will be done at vehicle owner's own risk, and voids any and all warranties.

Installation of this part MAY limit or void some vehicle manufacturer's warranties!

ALWAYS DRIVE SAFELY, REDUCE SPEED, AND WEAR YOUR SEAT BELT.

LIMITED LIFETIME WARRANTY

This product is warranted to be free of defects in materials and workmanship to the original purchaser on the vehicle in which it is originally installed. This warranty does not cover loss of time, labor, or any other components as a result of damage. This warranty may be void if this product is installed by any person other than an ASE certified professional.