

# PRO RYDE<sup>®</sup> SUSPENSION SYSTEMS

EXACTLY THE WAY YOU WANT IT.™

## 3-in-1 REAR SPRING BLOCK KIT INSTALLATION

2007+ GM Silverado/Sierra 1500

PATENTED

### IMPORTANT!

Read ALL WARNINGS and information contained in these instructions PRIOR to installing this product. Vehicle Owner MUST be provided the IMPORTANT VEHICLE OWNER'S INFORMATION section of these instructions after installation of this product.

#### Bill of Materials

- (1) Installation Instructions & Warnings
- (2) Interlocking 3-in-1 Cast Iron Blocks
- (4) OEM Grade U-Bolts
- (8) OEM Grade Nuts & Washers



**ALWAYS WEAR PROPER EYE PROTECTION & USE TOOLS SPECIFIC TO THE JOB!**

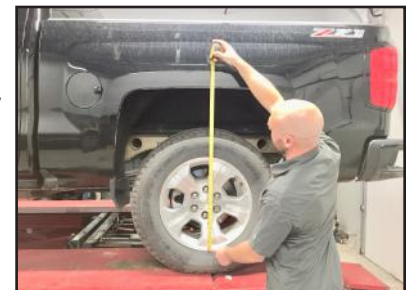
**IMPORTANT! THIS IS A PATENTED INTERLOCKING SYSTEM AND SHOULD NEVER BE STACKED OR USED WITH ANY OTHER LEAF SPRING BLOCKS AS IT MAY CAUSE AN UNSAFE CONDITION FOR BOTH THE INSTALLER & THE VEHICLE DRIVER.**

**STEP 1:** Position vehicle on a stable, flat surface or automotive lift. Be sure engine is turned OFF and vehicle is in PARK. Secure vehicle with wheel chocks.



**STEP 2:** On a flat, level surface, MEASURE preinstallation ride height, FRONT & REAR, and write down measurements.

Front (L) \_\_\_\_\_  
Front (R) \_\_\_\_\_  
Rear (L) \_\_\_\_\_  
Rear (R) \_\_\_\_\_



**STEP 3:** Position jack under frame or leaf spring in front of rear axle. Don't lift vehicle yet. Work on one side of the vehicle at a time.



**STEP 4:** Remove lower shock bolt.



**STEP 5:** Remove the four U-bolt nuts and washers on each side of the vehicle, and remove lower U-bolt axle brackets.



**STEP 6:** Lift vehicle by frame or leaf spring. Remove factory rear block.



**STEP 7:** Install desired amount of lift. Make sure alignment pins line up with spring and axle. Make sure **FRONT** marking on block is facing **FRONT** of vehicle. Utilize lower portion of block to get 1.0" rear lift as shown here.



**STEP 8:** Utilize two lower blocks together to get 1.5" rear lift as shown here.



**STEP 9:** Utilize all three blocks together to get 2.0" as shown here.



**STEP 10:** Slowly lower vehicle making sure the alignment pin lines up with alignment hole on block. Tighten new ubolts evenly in a crisscross pattern.



**STEP 11:** Install shock bolt and nut. Torque to manufacturer's specifications.



**STEP 12:** Progressively torque U-bolt nuts in a crisscross pattern to Factory specs.



**STEP 13:** REPEAT STEPS 5 THROUGH 12 ON OTHER SIDE OF THE VEHICLE. Carefully follow each step of these instructions as you did on the first side of vehicle!

**STEP 14:** Perform a complete wheel alignment, utilizing a Certified Alignment Technician with experience working on lifted vehicles.



**STEP 15:** ADJUST HEADLIGHT AIM to accommodate new ride height position.

**STEP 16:** Check and retorque U-bolt fasteners after 500 miles, and inspect regularly during routine maintenance.

**Before:**



**After:**



Shown with front level kit 75-1050G set at 2.5"

**IMPORTANT! Check all fasteners for proper torque. Check to insure there is adequate clearance between all rotating, mobile, fixed and heated members. Check steering for interference and proper working order. Test brake system.**

Complete a full 4-corner lift and install a ProRYDE LiftMachine front Level/Lift Kit!



**52-1500G-1118**

Learn more about suspension systems on our website.