



## INSTALLATION INSTRUCTIONS

Progress Technology [Anti-Sway Bar](#)

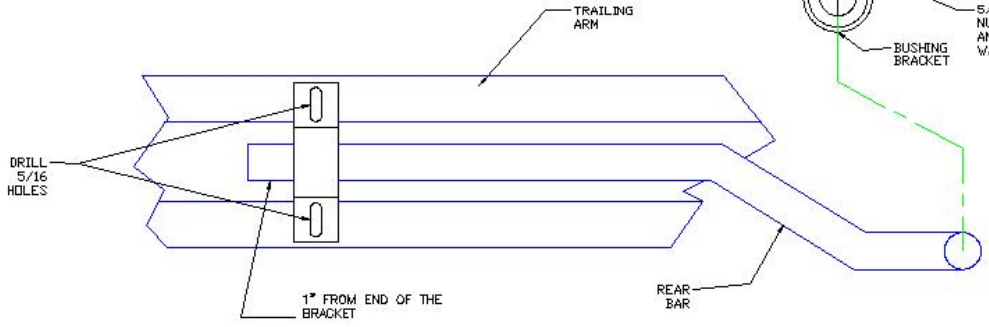
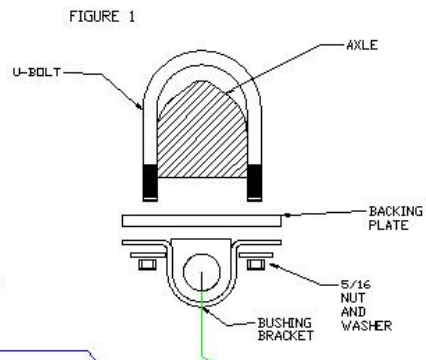
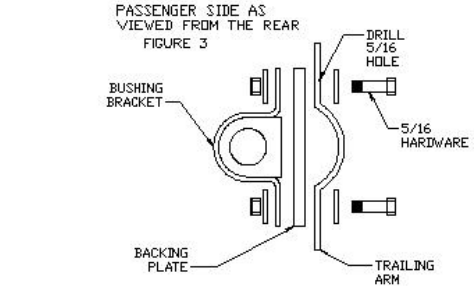
2000-> Nissan Sentra (Rear) # 62.1511

**NOTE: Progress Technology products should only be installed by a qualified licensed mechanic experienced in the installation and removal of suspension components. Please read instructions from start to finish and verify the parts in the parts list before beginning installation.**

### Parts List

<u>Item</u>	<u>Quantity</u>
Anti-roll bar (19 mm)	1
U bracket	4
Pivot bushing	4
5/16-18 X 1 HHCS	4
5/16-18 Lock Nut, nylon	8
5/16-18 U-bolt	2
5/16 Flat washers	12
Backing plate	4
Grease tube	1
Instruction Sheet	1

1. Park vehicle on a smooth, level, asphalt or concrete surface. Block front wheels. Jack up rear end of car and support with jackstands. Remove rear wheels and tires.
2. Locate the pivot “D shaped” polyurethane bushings and tube of special grease supplied in the hardware kit. Cut the end off of the grease tube and apply the grease to the bore of the polyurethane bushings (in the hole).
3. Assemble bushings and brackets over bar according to the diagram page ( fig. 1 ). Assemble bar onto axle beam, and slide brackets and U-bolts as wide as possible on axle. Tighten the u-bolts at this time.
4. Rotate the bar end up, so that the end is in the middle of the rear trailing arm. Attach the as shown in fig. 2 and 3 of the diagram page. Center the bushing bracket on the arm about 1” from the end of the bar. Mark and drill two 5/16 holes (move brake lines for clearance. ) Using hardware provided, bolt bushing bracket and back plate to the arm.  
NOTE: Drill and mount one side first , then the other side. This will prevent “pre-load” on the bar.
5. Install wheels and tires. Lower rear of car onto ground, and roll car back and forth to settle suspension.
6. Installation is complete. Check assembly periodically for tightness.



PASSENGER SIDE