

2019 CATALOG



JUST BUILT BETTER
MADE IN USA



TABLE OF CONTENTS

Access Panel.....	9	Fuel Cells.....	27	Rear End Mounts 91/10	16
Air Filters	26	Fuel Cell Bulkhead Fittings.....	27	Rivets.....	47
Aluminum Threaded Tubes.....	14	Fuel Cell Vent.....	27	Rocker Panels	51
Axles.....	39	Fuel Filters	27	Rod Ends.....	15
Ballast Brackets	8	Fuel Pressure Regulators	27	Rollcage Net	33
Battery Box.....	31	Fuel Pumps	27	Roofs	49
Ball Joints	17	Gauges	32, 33	Seats (Racing)	33
Bellhousing.....	42	Gears.....	40	Seat (Leg Support)	33
Bent Tie Rods.....	14	Harnesses	33	Seat (Head Support).....	33
Bent 4 Bar Tubes.....	14	Hinge (Aluminum)	49	Shaker Screen	30
Birdcages (Aluminum)	4, 6	Hood Pins.....	48	Shifters	43
Birdcages (Steel)	6, 7	Hood Scoops	51	Shock Pins	36
Birdcage Parts (Steel).....	5, 6, 7	Hose (PushLok)	28	Shocks.....	20 - 24
Body Components ..	48, 49, 50, 51	Hose (Braided).....	29	Sixth Coil	11
Brake Calipers	34	Hubs	40, 41	Skid Plates	48
Brake Floater (Aluminum)	5	Ignition Coil	31	Spacers (A-Arm, Tapered)	17
Brake Floater (Steel)	7	Ignition Controllers	31	Spark Plug Wires.....	31
Brake Lines (Braided)	28	Jam Nuts	15	Spindles.....	10
Brake Mounts	6, 7	J-Bars.....	8	Spoilers	49
Brake Pads	35	Lower Control Arms	13	Spring Steel & Punch	49
Brake Pedals	34	Lift Bar Kits.....	16	Starters.....	42
Brake Rotors	34	Lug Nuts.....	24	Steering Columns.....	18
Breather Housing	26	Master Cylinders	34	Steering Components	18, 19
Breather Element.....	26	Mufflers.....	16	Steering Wheels	33
Bushings.....	47	Noses & Graphics.....	50, 51	Steering Wheel Quick Release ..	18
Caster/Camber Gauge	36	Oil & Oil Filters	28	Swaged Steel Tubes.....	14
Carb Cover	26	Oil Cooler.....	26	Swing Arms	14
Carb Line Kit (Dual Inlet).....	26	Outerwears	26	Tire Tools	52
Carb Spacers (Billet).....	26	Panhard Mount Brackets	8,9	Transmissions.....	41
Chassis Tabs	48	Pedals.....	34	Transmission Components...41-45	
Clamp Bracket.....	6	Pinion Mounts	9	Travel Limit Chain Kits.....	11
Coil Springs.....	25	Power Steering Line Kit.....	19	Throttle Linkage.....	26
Disconnect (Steering Wheel)	33	Power Steering Pumps.....	19	Throttle Pedal	34
Distributors	31	Proportioning Valve	18	Tube Ends.....	47
Distributor Cap	31	Pull Bars	11	U-Joints.....	46
Driveshafts.....	46	Quick Change Gears	40	Upper Control Arms	12
Dry Sump Tank.....	27	Quick Change Rear Ends....	38, 39	Valances	50, 51
Dzus Fasteners.....	47	Rack & Pinion Steering.....	18	Water Pumps.....	30
Engine Plates.....	37	Radiator	30	Water Neck Spacers.....	30
Engine Mounts	37	Radiator Mounts.....	30	Wheels (Wide 5 Aluminum).....	52
Fan Spacers	30	Radiator Shroud	30	Wheel Spacers	52
Fans (Mechanical)	30	Radio	33	Wide 5 Bearings, Nuts & Seals..	39
Fifth Coil Mounts	11	Rear End Vent.....	39	Wide 5 Hubs.....	41
Fittings.....	28, 29	Rear End Components.....	38, 39	Yokes (Drive, Slip).....	46
Flywheels.....	42	Rear End Filler Kits	39		



BEARING BIRDCAGES - ANY CHASSIS

2600 DOUBLE SHEAR BEARING BIRDCAGES

The double shear design, and equally spaced mounting holes around the barrel circumference produce a cage that doesn't distort the barrels shape, allowing for smooth operation and no locking of bearing. Adjustable shock mounts are mounted with 7/16" bolts. Plates have 1/2" mounting holes. Includes shock mounts, high misalignment bushings, birdcage with bearings, and retaining rings. Brake mount sold separately depending on your application.

- PPM2600L-LH..... Birdcage - Left Rear Longhorn
- PPM2600R-LH..... Birdcage - Right Rear Longhorn
- PPM2604-LH..... Birdcage - LR Heavy 27#, Longhorn
- PPM2600GRT-L..... L-Cage w/shock mts. & 4 bar bushings
- PPM2600GRT-R..... R-Cage w/shock mts. & 4 bar bushings
- PPM2604GRT.. LR Heavy 27# w/shock mts. & 4 bar bushings
- PPM2600L-M..... Birdcage - Left Rear Mastersbilt
- PPM2600R-M..... Birdcage - Right Rear Mastersbilt
- PPM2604-MB..... Birdcage - LR Heavy 27#, Mastersbilt
- PPM2600L-R..... Birdcage - Left Rear Rocket
- PPM2600R-R..... Birdcage - Right Rear Rocket
- PPM2604-R..... Birdcage - LR Heavy 27#, Rocket
- PPM2671..... 3" Retainer Ring (2600)
- PPM2601..... 2600 Shear Plates Left & Right Rear
- PPM2602..... 2600 Shear Plates Right Rear Bottom
- PPM2603..... 2600 Shear Plates Left Rear Bottom
- PPM2632..... Shock Mount 2600 Series
- PPM2642R..... Swivel/Angle Shock Mount 2600 Series

- PPM2664..... 7/16" Alum Step Bushing, 5/8"-1/2" ID
- PPM2665..... 1/2" Alum Step Bushing, 5/8"-1/2" ID
- PPM2666..... 5/8" Alum Step Bushing, 5/8"-1/2" ID
- PPM2667..... 13/16" Alum Step Bushing, 5/8"-1/2" ID
- PPM76500..... 1/2" Long Alum Bushing, 7/16" ID
- PPM76875..... 7/8" Long Alum Bushing, 7/16" ID
- PPM76138..... 1-3/8" Long Alum Bushing, 7/16" ID

CALL FOR OTHER CHASSIS APPLICATIONS



2500 ELITE SERIES BIRDCAGES

Bolt together design with bearing design that reduces friction and binding. Aircraft gauge billet aluminum. Each assembly includes retainer rings, shock mounts, bushings, and bolts. Custom designs available. Swivel shock mounts upgrades available.

FASTENER NOTE: KB-37C175KCS - 3/8" Pin Bolt for PPM2072 Brake Mount Clamp

CALL FOR OTHER CHASSIS APPLICATIONS



XX = chassis

MB = MasterSbilt Smackdown

GRTN = GRT Narrow
WAR7 = Warrior 07

MBX = MasterSbilt GenX
WAR6 = Warrior (Rear Strut)

GRTW = GRT Wide
BW = Barry Wright

RKT = Rocket
CR = Rayburn

- PPM2500B-XX.....Billet Bearing BC Assembly
- PPM2500BL-XX..... Billet Bearing BC - Left Side/Specify
- PPM2500BR-XX..... Billet Bearing BC - Right Side/Specify
- PPM2500B-XX-BO.....Billet Bearing BC - Brake Float Option
- PPM2552..... Radius Rod Arm - Right Side/Specify
- PPM2552DP..... Radius Rod Arm - Right Side Drop
- PPM2552-2..... Radius Rod Arm - Right Side/Specify
- PPM2553..... Radius Rod Arm - Left Side/Specify
- PPM2553DP..... Radius Rod Arm - Left Side Drop
- PPM2553-3..... Radius Rod Arm - Left Side/Specify
- PPM2554L..... Radius Rod Arm/Shock Arm - GRT (Left)
- PPM2554R..... Radius Rod Arm/Shock Arm - GRT (Right)
- PPM2555..... 2500 Shock Arm
- PPM2555DP..... 2500 Shock Arm - Dropped Shock Mount
- PPM2062SL..... Superlite Brake Mount - 11-3/4" Rotor
- PPM2062RSL..... Superlite Brake Mount - 12" Rotor
- PPM2062DL..... Dynalite Brake Mount
- PPM2072..... Brake Mount Clamp
- PPM2560..... Bearing Carrier
- PPM2565K-140..... Billet Tube Spacer Kit - (.250")
- PPM2565K-562..... Billet Tube Spacer Kit - (.562")
- PPM2565K-175..... Billet Tube Spacer Kit - (1.75")
- PPM2565K-225..... Billet Tube Spacer Kit - (2.25")
- PPM2565K-250..... Billet Tube Spacer Kit - (2.50")
- PPM2565K-275..... Billet Tube Spacer Kit - (2.75")
- PPM2565K-312..... Billet Tube Spacer Kit - (3.125")
- PPM2565K-350..... Billet Tube Spacer Kit - (3.50")
- PPM2565K-425..... Billet Tube Spacer Kit - (4.25")

BEARING BIRDCAGE PARTS

BEARING BIRDCAGE PARTS



FASTENER NOTE: KB-37C175KCS - 3/8" Pin Bolt for PPM2072 Brake Mount Clamp

- PPM2552..... Radius Rod Arm - Right Side/Specify
- PPM2552DP..... Radius Rod Arm - Right Side/Drop
- PPM2552-2..... Radius Rod Arm - Right Side/Specify
- PPM2553..... Radius Rod Arm - Left Side/Specify
- PPM2553DP..... Radius Rod Arm - Left Side/Drop
- PPM2553-3..... Radius Rod Arm - Left Side/Specify
- PPM2554L..... Radius Rod Arm/Shock Arm (GRT) (L)
- PPM2554R..... Radius Rod Arm/Shock Arm (GRT) (R)
- PPM2555..... 2500 Shock Arm
- PPM2555DP..... 2500 Shock Arm (Dropped Shock Mount)
- PPM2557..... Right Rear Top Link Arm (2500 Series)
- PPM2558..... Right Rear Bottom Link Arm (2500 Series)
- PPM2545..... 2500 Shock Arm, Bottom Half
- PPM2062SL..... Superlite Brake Mount (11-3/4" Rotor)
- PPM2062RSL..... Superlite Brake Mount (12" Rotor)
- PPM2062DL..... Dynalite Brake Mount

- PPM2072..... Brake Mount Clamp
- PPM2071..... 3" Retainer Ring
- PPM2511..... Bung 5/8" Hole (1-Piece)
- PPM2511-2..... Bung 5/8" Hole (2-Pieces)
- PPM58500..... 1/2" Steel Bushing - 5/8" ID
- PPM2044..... Birdcage Roller Bearing
- PPM2032..... Shock Mount - 1 Position
- PPM2032A..... Shock Mount - 1 Position, Angled
- PPM2042..... Shock Mount - 2 Position
- PPM2042-A..... Shock Mount - 2 Position, Angled
- PPM2042R..... Rotating Shock Mount - 3 Position
- PPM2042RDP..... Rotating Shock Mount, 1" Extra Drop
- PPM2042R-EXT.. Rotating Shock Mount - 4 Position (Extended)
- PPM2033..... Shock Mount Stud
- PPM2042CW..... Steel Clevis - New Wide Style
- PPM2042RB..... Steel Clevis Bushing - For Wide

ALUMINUM BRAKE FLOATERS

Black anodized aluminum with ring, bushings, bolts & washers. Allows locking of PPM2095 LR Brake Floater. Sold separately from PPM2595.



Black anodized aluminum, double bearing, 3.5" Brake mount. Lock ring not included.



- PPM2595..... Brake Floater - Left Rear
- PPM2595LK..... Brake Floater Lock Ring

CHASSIS SHOCK DROP & SPECIALTY MOUNTS



- PPM2050..... 2" Chassis Shock Drop
- PPM2042RG..... Rotating Shock Mount - Fits GRT
- PPM2042RT..... Rotating Shock Mount - 7/16" Holes

BIRDCAGES & PARTS

TWO PIECE STEEL BIRDCAGES

3 Double roller .008 Bearing design. Clamp up or float shock arm. Adjustable left rear behind shock drop 6" to 8". Adjustable left rear front and right rear drop 5", 6", 7". Standard 4 bar mounts indexable 1/2" to 1". Left rear is indexable on bottom 1/2" to 1" lower. 5/8" or 1/2" 4 bar rod end bushing available. Assembly comes complete to install left and right complete with one shock mount.



- PPM4036..... 2-Piece Steel Birdcage Assembly
- PPM4036-L..... 2-Piece Steel Birdcage Left Side Complete
- PPM4036-R..... 2-Piece Steel Birdcage Right Side Complete
- PPM4036-LS..... 2-Pc Steel Birdcage Left Shock Arm
- PPM4036-RS..... 2-Pc Steel Birdcage Right Shock Arm
- PPM4036-C..... 2-Piece Steel Birdcage Shock Arm Clamp
- PPM4036-B..... 2-Pc Steel Birdcage Lock Bushings
- PPM4015HD..... 2-Pc Steel Retainer Ring (Heavy Duty)
- PPM4015..... 1-Piece Steel Retainer Ring
- PPM2044S Steel Birdcage Bearing (3.008 I.D.)
- PPM4010C Shock Mount (Clevis Type)
- PPM4010..... Shock Mount (RR & LF)
- PPM4010A Shock Mount (LR Angled)
- PPM4011..... Shock Mount (RF)
- PPM2042CW Clevis (Wide Style)
- PPM2042RB..... Clevis Bushing

CLAMP BRACKET & SHOCK MOUNTS



- PPM1600..... Clamp Bracket - Deadbolt Shock Mount
- PPM2032..... Shock Mount - 1 Position
- PPM2032A Shock Mount - 1 Position, Angled
- PPM2042R Rotating Shock Mount - 3 Position
- PPM2033..... Shock Mount Stud
- PPM2042CW..... Steel Clevis - New Wide Style
- PPM2042RB..... Steel Clevis Bushing - For Wide
- PPM2042R-EXT Rotating Mount (Extended) - 4 Position

BRAKE MOUNTS

Brake Mounts are made of aircraft grade billet aluminum. They include 3/8" double pin holes. Designed to eliminate flex, and available in 11-3/4" and 12" rotor designs.



- ** PIN BOLTS NOT INCLUDED ****
- PPM1530-SL..... Superlite 11.75" Rotor
 - PPM1530-DL..... Dynalite 11.75" Rotor
 - PPM1530R-SL..... Superlite 12" Rotor

ACCESSORY BRACKETS



- PPM1101-R..... 1-1/4" Accessory Bracket, 1/4" Bolt Hole
- PPM1111-R..... 1-1/2" Accessory Bracket, 1/4" Bolt Hole
- PPM1160..... 1-1/2" Fuel Cell Bracket, 1/2" Bolt Hole
- PPM1165..... 1-3/4" Fuel Cell Bracket, 1/2" Bolt Hole

GIFT CARDS
NOW AVAILABLE



MODIFIED STEEL BIRDCAGES

PPM4035JO



PPM4011
Included

PPM4036



2 double roller .008 bearing design. Adjustable shock mounts drop 5", 6", 7". Left rear is indexable on bottom 7/8" lower. 5/8" or 3/4" 4 bar rod end bushing available. 4" wide stance. Clamp up or float complete cage with PPM4026 (sold separately).

PPM4035..... Steel Combo Bearing Birdcage

2 double roller .008 bearing design. Adjustable shock mounts drop 5", 6", 7". Left rear is indexable on bottom 7/8" lower. 5/8" Or 3/4" 4 bar rod end bushing available. 3" wide stance. Clamp up or float complete cage with PPM4026 (sold separately).

PPM4035JO Narrow Steel Combo Bearing Birdcage Includes right & left sides (cages with bearings, shock arms with bearings, locking collars, locking bushings, 4 bar bushings, PPM4011 shock mounts, PPM4015 clamp collars). 3 bearing design works with lock bushings. Clamp up or float shock arm.

PPM4036.....2-Pc Steel Bearing Birdcage Assembly



PPM4010

PPM4010A

PPM4060

PPM4035

PPM4015HD

PPM4011

PPM4015

PPM2044S

PPM4010C

PPM4011
Included

PPM4026.....4035 Lockdown Clamp

PPM4015HD..... 2 piece Steel Retainer Ring (Heavy Duty)

PPM4015..... 1 Piece Steel Retainer Ring

PPM2044S Steel Birdcage Bearing (3.008 I.D.)

PPM4010C Shock Mount (Clevis Type)

PPM4010 Shock Mount (RR & LF)

PPM4010A Shock Mount (LR Angled)

PPM4011 Shock Mount (RF)

PPM2042CW Clevis (Wide Style)

PPM2042RB Clevis Bushing

PPM4060 Step Bushing 3/4" to 5/8" I.D.

MODIFIED STEEL BIRDCAGE PARTS



3-Link Package
PPM4027 & PPM4050-2
(Sold Separately)

PPM4010

PPM4010C

Shock Clamp Bracket
PPM4050-2
Shock Mount Included

3-Link Clamp
Bracket
PPM4027

PPM4050-2 Clamp Bracket (Steel)

PPM4027 3-Link Clamp Bracket

PPM4010C Shock Mount (Clevis Type)

PPM4010 Shock Mount (RR & LF)

PPM4010A Shock Mount (LR Angled)

PPM4011 Shock Mount (RF)

STEEL BRAKE MOUNTS / BRAKE FLOATERS

2 double roller .008 bearing design with 2" wide stance reduces flexing when Brake is applied. Available left or right. 3/4", 5/8" rod end bushings available. GM metric Brakes.



PPM1530MGM

PPM1530GM



PPM4025L

PPM4025R

PPM1530GM Steel GM Brake Mount

PPM1530MGM Steel GM Metric Brake Mount

PPM4025R Brake Floater Right Rear (Metric)

PPM4025L Brake Floater Left Rear (Metric)

PPM4055 1/4" Step Bushing 3/4 to 5/8 Hole

J-BARS & BALLAST BRACKETS

ADJUSTABLE ALUMINUM J-BARS

STRENGTH, CLEARANCE & PERFORMANCE

HIGH STRENGTH BILLET 6061-T6 ALUMINUM H-BEAM DESIGN

Includes: COM12, tool steel length adjuster, and chromoly rod end weighs only 5 pounds with rod end and adjuster. Length adjusts safely to 1-1/2" longer.

- PPM0718..... 18" Billet Aluminum J-Bar with Adjuster
- PPM0719..... 19-1/2" Billet Aluminum J-Bar with Adjuster
- PPM0720..... 20-1/2" Billet Aluminum J-Bar with Adjuster
- PPM0721..... 21-1/2" Billet Aluminum J-Bar with Adjuster
- PPM0723..... 23" Billet Aluminum J-Bar with Adjuster
- PPM0765..... J-Bar Length Adjuster
- PPM0765L..... J-Bar 1" Extra Length Adjuster



ADJUSTABLE STEEL J-BARS

STRENGTH, CLEARANCE & PERFORMANCE

HIGH STRENGTH SEAMLESS DOM TUBING

Includes: COM12, tool steel length adjuster, and chromoly rod end length adjusts safely to 1-1/2" longer.

TRACK PROVEN INCREASED SIDE BITE!!!

- PPM1710N 18 (min.) Steel Adjustable J-Bar
- PPM1715N 19-1/2" (min.) Steel Adjustable J-Bar
- PPM1720N 20-1/2" (min.) Steel Adjustable J-Bar
- PPM1725N 21-1/2" (min.) Steel Adjustable J-Bar
- PPM1730N 23" (min.) Steel Adjustable J-Bar Steel
- PPM1760..... J-Bar Adjuster & Jam Nut (Old Style J-Bar)
- PPM0765..... J-Bar length Adjuster (for N Style)
- PPM0765L..... J-Bar 1" Extra Length Adjuster



PANHARD BAR PINION MOUNTS



- PPM0440S Steel 1/2" Thick Double Sided (8 hole)
- PPM0480..... Pinion Mount Stud (Use on Mounts with Holes)
- PPM0490..... Rear Slotted Pinion Mount Stud

BALLAST BRACKETS



- PPM1105-R..... 1" Round Lead Mount Ballast Bracket
- PPM1100-R..... 1-1/4" Round Lead Mount Ballast Bracket
- PPM1110-R..... 1-1/2" Round Lead Mount Ballast Bracket
- PPM1120-R..... 1-3/4" Round Lead Mount Ballast Bracket
- PPM1130-R..... 2" Round Lead Mount Ballast Bracket
- PPM1140-S..... 2" Square Lead Mount Ballast Bracket
- PPM1145-S..... 1-1/2" Square Lead Mount Ballast Bracket

PINION MOUNTS & PANHARD BRACKETS

CLIMBER PINION MOUNTS



PPM0430



PPM0435
Extra low right side



PPM0420

- 6061-T6 Billet Aluminum
- Includes: Bung, Seal, & O-ring
- Rear Slotted
- Rear Slot Bung.
- Easy 1/2" Increment Panhard Bar Adjustments

- PPM0450..... Single Sided, threaded, adj. (Pinion Mount)
 PPM0451..... Pinion Adjusting Stud
 PPM0452..... Threaded Mounting Pinion
 PPM0430..... Double Sided (Climber Mount)
 PPM0435..... Single Sided (Climber Mount)
 PPM0431..... Climber Mount Backup Nut
 PPM0432..... Climber Mount Gear Bung
 PPM0420..... Double Sided (Radius, Rear Slotted)
 PPM0410..... Rear Slotted Bung
 PPM0320..... Oil Seal
 PPM0330..... Rubber O-Ring



PPM0330



Oil Seal
PPM0320



Rear Slot Bung
PPM0410



Climber Bung
PPM0432



Backup Nut
PPM0431

Climber Pinion Mount -
 Easily adjust panhard bar height with one wrench. 6061-T6 billet aluminum. Includes: bung, seal, & O-ring.

ALUMINUM AXLE TUBE WEIGHT MOUNT

Double pinned to stop rotation on tube.
 PPM1170.... Axle Tube Weight Mount,
 Black Powder Coated



PANHARD MOUNT BRACKETS

PPM0560-AR

Double Radius Slots for mounting on center or to inside of 2x2 mount. Radius slots allow for moving up or down without adjusting J-Bar.



PPM0560-AR

PPM0565-AR

Double Radius Slots for mounting on center or to outside of 2x2 mount. Radius slots allow for moving up or down without adjusting J-Bar.



PPM0565-AR

PPM0570-R

Radius holes for mounting to inside of 1-3/4" round mount. Radius holes allow for moving up or down without adjusting J-Bar. Includes (2) PPM4070 Bushings available as a 2" square mount also just ask for part # PPM0570-S.



PPM0570-R

- PPM0560-AR..... 2 x 2 Double Radius Climber Panhard Mount (Inside Mount)
 PPM0565AR..... 2 x 2 Double Radius Climber Panhard Mount (Rocket Style)
 PPM0566AR..... 2 x 2 Double Radius Panhard Mount (Outside/Center)
 PPM0561-AR..... 2 x 2 Double Radius Panhard Mount (Inside/Center)
 PPM0570-R..... 1-3/4" Round Radius Panhard Mount (Double Shear)
 PPM0570-S..... 2" Square Radius Panhard Mount (Double Shear)
 PPM0550-A..... Center Boss, Double Sided Slider
 PPM0515-A..... 2 Hole Angled Slider
 PPM0555-A..... 1-1/2" 3 Hole Double Sided Angled Slider
 PPM0510-S..... Steel Double Sided Slider Mount
 PPM310..... Aluminum Cone bushing (3/4" x 3/4")
 PPM0560AR-BOLT..... 0560-AR Panhard Mount Bolt
 PPM0560AR-BUNG..... 0560-AR Panhard Mount Bung
 PPM0560AR-NUT..... 0560-AR Panhard Mount Nut
 KB-75C225HC5Z..... Panhard Mount Bolt 3/4"x 2-1/4" Long
 PPM4070..... 5/8" Step Bushing 3/4" to 5/8" ID
 PPM0560..... Z-Link Bracket (1" x 1-1/2" Mount with 5 Mounting Holes)
 PPM4000B..... Panhard Frame Plate Assembly
 PPM4001B..... Panhard Mount Plate
 PPM4002..... Panhard Frame Plate Bung

PPM0515-A

Aluminum angled slider for mounting on center or to inside of 2x2 mount. Quickly switch to different J-bar length, without adjusting a slider.



PPM0515-A



PPM4000B



PPM0550-A



PPM0560 Z-Link Bracket

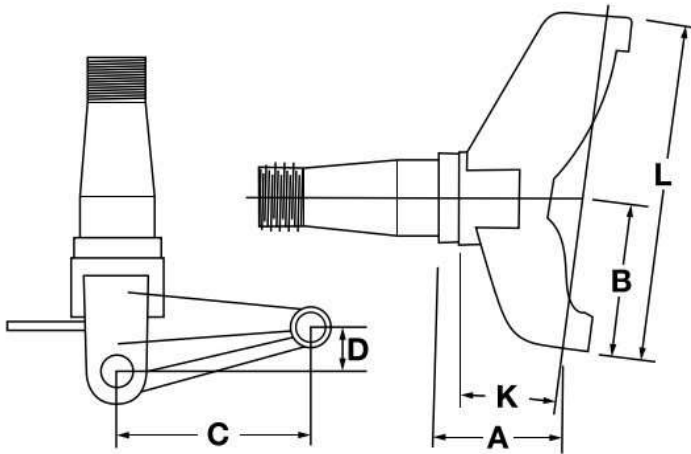


PPM0510-S

RACING SPINDLES

STEEL RACING SPINDLES

Superior Handling Through Superior Design



- PPMBW161 LF, 3.5 Brake Barry Wright, with Serrated Adjustment
- PPMBW261 RF, 3.5 Brake Barry Wright
- PPMC161 LF, 3.5 Brake Rayburn
- PPMC261 RF, 3.5 Brake Rayburn
- PPMG161 LF, 3.5 Brake GRT
- PPMG162 LF, 5.25 Brake GRT
- PPMG163 LF, 3.5 Brake, .810 Rotor GRT
- PPMG261 RF, 3.5 Brake GRT
- PPMG262 RF, 5.25 Brake GRT
- PPMG263 RF, 3.5 Brake, .810 Rotor GRT
- PPMM161 LF, 3.5 Brake Mastersbilt
- PPMM162 LF, 5.25 Brake, 1.25 Rotor Mastersbilt
- PPMM163 LF, 3.5 Brake, .810 Rotor Mastersbilt
- PPMM261 RF, 3.5 Brake Mastersbilt
- PPMM262 RF, 5.25 Brake, 1.25 Rotor Mastersbilt
- PPMMX161 LF, 3.5, 1.25 Brake, Mastersbilt Gen X
- PPMMX162 LF, 5.25 Brake, Mastersbilt Gen X
- PPMMX163 LF, 3.5 Brake, .810 Mastersbilt Gen X
- PPMMX261 RF, 3.5 Brake, Mastersbilt Gen X
- PPMMX262 RF, 5.25 Brake, Mastersbilt Gen X
- PPMMX263 RF, 3.5 Brake, .810 Mastersbilt Gen X
- PPMS7-L LF, 3.5 Brake, Mastersbilt S7 Smack
- PPMS7-L8 LF, 3.5 Brake, .810 Mastersbilt S7 Smack
- PPMS7-R RF, 3.5 Brake, Mastersbilt S7 Smack
- PPMS7-R8 RF, 3.5 Brake, .810 Mastersbilt S7 Smack
- PPMR161 LF, 3.5 Brake Rocket - Black
- PPMR162 LF, 5.25 Brake Rocket - Black
- PPMR261 RF, 3.5 Brake Rocket - Black
- PPMR262 RF, 5.25 Brake Rocket - Black
- PPMRB161 LF, 3.5 Brake, Rocket-Blue
- PPMRB261 RF, 3.5 Brake, Rocket-Blue
- PPMRG161 LF, 3.5 Front & Rear, Rocket-Gray
- PPMRG261 RF, 3.5 Front & Rear, Rocket-Gray

- PPMRG151-5 LF, 3.5" Brake Rocket - Grey, 1/2" Drop, 1.25" Rotor
- PPMRG261-5 RF, 3.5" Brake Rocket - Grey, 1/2" Drop, 1.25" Rotor
- PPMRX153 LF, 3.5 Brake, Rocket XR1 .810 Rotor
- PPMRX273 RF, 3.5 Brake, Rocket XR1 .810 Rotor
- PPML153 LF, 3.5 Brake, Longhorn .810 Rotor
- PPML273 RF, 3.5 Brake, Longhorn .810 Rotor
- PPMRG163 LF, 3.5 Brake, Rocket Grey .810 Rotor
- PPMRG263 RF, 3.5 Brake, Rocket Grey .810 Rotor
- PPMRG153-5 LF, 3.5" Brake Rocket - Grey, 1/2" Drop, 0.810" Rotor
- PPMRG263-5 RF, 3.5" Brake Rocket - Grey, 1/2" Drop, 0.810" Rotor
- PPMRB163 LF, 3.5 Brake, Rocket Blue .810 Rotor
- PPMRB263 RF, 3.5 Brake, Rocket Blue .810 Rotor
- PPMV155 LF, 3.5" Front Brake Rocket, 0.810" Rotor, Slug Steering
- PPMV265 RF, 3.5" Front Brake Rocket, 0.810" Rotor, Slug Steering
- PPMW181 LF, 3.5 Brake Warrior
- PPMW181-08 LF, 3.5 Brake Warrior
- PPMW181-9.75 LF, 9.75 Warrior
- PPMW281 RF, 3.5 Brake Warrior
- PPMW281-9.00 RF, 9.00 Warrior
- PPMA161 ... Steel Stock Clip Racing Spindle LF 8-11/16" Tall
- PPMA261 ... Steel Stock Clip Racing Spindle RF 8-11/16" Tall
- PPM0900 Spindle Checker, Chevy Lower
- PPM0910 Spindle Checker, Chrysler Lower
- PPM0920 Spindle Checker, Chevy/Chrysler Lower



PPM-163

PULL BARS & SUSPENSION PARTS

STEEL RACING SPINDLES

Spindles have a strong DOM steel snout. Our spindle design increases strength, accuracy and reduces spindle flex.

- PPM-161Serrated Spindle Bung
- PPM-161-76.....Caliper Spacer for Spindle
- PPM-162Serrated Spindle Block
- PPM-163 Serrated Spindle Block and Bung
- PPM161-SG-0.....Spindle Steering Slug, 0 Offset 5/8" OD
- PPM161-SG-1.....Spindle Steering Slug, 1/8" Offset 5/8" OD
- PPM161-SG-2.....Spindle Steering Slug, 1/4" Offset 5/8" OD
- PPM161-SG-3.....Spindle Steering Slug, 3/8" Offset 5/8" OD
- PPM161-SG-0TSpindle Top Ball Joint Slug, 0 Offset
- PPM161-SG-3TSpindle Top Ball Joint Slug, 0 Offset



Ask for your chassis application!

PULL BAR / SIXTH COIL



PPM0200-S
Spring not included
Available round or
square mount

PPM0250-R
2-1/2" coil
over spring

PPM0270
Spring included
Use as a 6th coil by
ordering a 5th coil mount

- PPM0200RSixth Coil Assembly without Spring 1-1/2 Round
- PPM0200SSixth Coil Assembly without Spring 1-1/2 Square
- PPM0250R 2.5" Sixth Coil Assembly without Spring 1-1/2 Round
- PPM0250S 2.5" Sixth Coil Assembly without Spring 1-1/2 Square
- PPM0200CClevis (Aluminum)
- PPM0210..... Bolt Kit (for 0200) Bolts, Spring Retainers & Stud
- PPM0270..... Left Rear Travel Limiter (with Spring)
- PPM0280..... Spring Loaded Pull Bar (without Spring)
- PPM0290B Pull Bar Spring (BLUE) (800 lbs)
- PPM0290R Pull Bar Spring (RED) (2200 lbs)
- PPM0290Y Pull Bar Spring (YELLOW) (3200 lbs)

Note: Try stacking red and yellow pull bar springs for traction.



PPM0280 - Spring not included. Designed with oil impregnated bushing & smooth bolt to eliminate travel bind. Aluminum housing threaded on both ends. 15-3/4" eye-to-eye.

TRAVEL LIMITER KITS WITH AXLE BEARING HOUSING



Available with 1-1/2", 1-3/4", and 2" chassis bracket

- PPM0150BLC.. 1-1/2" Travel Limiter with Bearing Housing Kit
- PPM0175BLC.. 1-3/4" Travel Limiter with Bearing Housing Kit
- PPM0200BLC..... 2" Travel Limiter with Bearing Housing Kit
- PPM0185ADJ.....Limit Chain Adjuster

TRAVEL LIMITER KITS

Available with 1-1/2", 1-3/4", & 2" Chassis Bracket



- PPM0150-LC..... 1-1/2" Travel Limiting Chain Kit
- PPM0175-LC..... 1-3/4" Travel Limiting Chain Kit
- PPM0200LC 2" Travel Limiting Chain Kit
- PPM0150-LCB 1-1/2" Travel Limiter Chassis Bracket
- PPM0175-LCB 1-3/4" Travel Limiter Chassis Bracket
- PPM0140.....Suspension Limiter with Black Puck
- PPM0200-LCB 2" Travel Limiter Chassis Bracket
- PPM4015HD.....2-Piece 3" Ring (Heavy Duty)
- PPM45144..... 3/16" G30 Chain (Sold per ft)

FIFTH COIL MOUNTS



- Billet aluminum with machined boss.
- Includes mounting bolts and bushing.

- PPM0120R14 1-1/4" Round 5th Coil Slider
- PPM0120R 1-1/2" Round 5th Coil Slider
- PPM0120S 1-1/2" Square 5th Coil Slider
- PPM0130R 1-1/2" Round 5th Coil Slider (+1-1/2")

UPPER CONTROL ARMS

LOW FRICTION UPPER CONTROL ARMS



- How to remove shaft:**
1. Remove E-clips & grease fittings
 2. Remove nut on Side that you want shaft to slide out on
 3. Slide bronze bushing & shaft out

1/2" slots on 6" centers. Powder coated with removable shaft & extra shock clearance. 13° ball joint pocket. Oil impregnated shaft bearings produces worry free movement with no binding.

Part #	Length
PPM6077SLF	7.75"
PPM6080SLF	8.00"
PPM6082SLF	8.25"
PPM6085SLF	8.50"
PPM6087SLF	8.75"
PPM6090SLF	9.00"
PPM6092SLF	9.25"
PPM6095SLF	9.50"
PPM6100SLF	10.00"
PPM6105SLF	10.50"
PPM6107SLF	10.75"
PPM6110SLF	11.00"
PPM6112SLF	11.25"
PPM6115SLF	11.50"
PPM6117SLF	11.75"
PPM6120SLF	12.00"

PPM6000ALF Low Friction Shaft
 PPM6000LF-KIT Low Friction Shaft Fastener Kit

BOLT-IN UPPER CONTROL ARMS



PPM0888 - Use to make ball joint plate more rigid

- 1/2" holes on 6" centers
- Powder coated
- Extra shock clearance
- 4-bolt Moog K6024.

Part #	Length
PPM6070	7.00"
PPM6072	7.25"
PPM6075	7.50"
PPM6077	7.75"
PPM6080	8.00"
PPM6082	8.25"
PPM6085	8.50"
PPM6087	8.75"
PPM6090	9.00"
PPM6092	9.25"
PPM6095	9.50"
PPM6097	9.75"
PPM6100	10.00"
PPM6102	10.25"
PPM6105	10.50"
PPM6107	10.75"
PPM6110	11.00"
PPM6112	11.25"
PPM6115	11.50"

BEARING SCREW-IN UPPER CONTROL ARMS

- Powder coated
- 13° ball joint pocket
- Slotted aluminum shaft
- Extra shock clearance
- Screw-in Moog K772

PPM6077XLF	7.75"
PPM6080XLF	8.00"
PPM6082XLF	8.25"
PPM6085XLF	8.50"
PPM6087XLF	8.75"
PPM6090XLF	9.00"
PPM6092XLF	9.25"
PPM6095XLF	9.50"
PPM6100XLF	10.00"
PPM6105XLF	10.50"
PPM6110XLF	11.00"
*PPM6110XLF-F	11.00" 0°
PPM6112XLF	11.25"
*PPM6112XLF-F	11.25" 0°
PPM6115XLF	11.50"
*PPM6115XLF-F	11.50" 0°
PPM6117XLF	11.75"
PPM6120XLF	12.00"



NOTE: * 0° Ball Joint Pocket

ALUMINUM UPPER A-ARM SLUGS

PPM6000-000	0"
PPM6000-062	1/16"
PPM6000-111	(XLF) Kit
PPM6000-125	1/8"
PPM6000-187	3/16"
PPM6000-250	1/4"
PPM6000-312	5/16"
PPM6000-375	3/8"
PPM6000-437	7/16"
PPM6000-500	1/2"

SCREW-IN UPPER CONTROL ARMS

- 1/2" holes on 6" centers
- Powder coated
- Extra shock clearance
- 13° ball joint pocket
- Screw-in Moog K772

Part #	Length
PPM6077S	7.75"
PPM6080S	8.00"
PPM6082S	8.25"
PPM6085S	8.50"
PPM6087S	8.75"
PPM6090S	9.00"
PPM6092S	9.25"
PPM6095S	9.50"
PPM6100S	10.00"
PPM6105S	10.50"
PPM6110S	11.00"
PPM6112S	11.25"
PPM6115S	11.50"
*PPM6105FS	10.50" Flat Pocket
*PPM6110FS	11.00" Flat Pocket
*PPM6112FS	11.25" Flat Pocket



NOTE: * 0° Ball Joint Pocket

METRIC UPPER CONTROL ARMS

- 1-1/2" offset with 6-7/8" bolt pattern
 - Powdercoated black finish
 - Extra shock clearance
 - Moog K5208 ball joint
- | | | | |
|------------|---------|------------|---------|
| PPM6080-MR | 8" RH | PPM6090-ML | 9" LH |
| PPM6085-ML | 8.5" LH | PPM6095-ML | 9.5" LH |
| PPM6085-MR | 8.5" RH | | |

CAMARO UPPER CONTROL ARMS

- 7-3/4" bolt pattern
 - Powdercoated black finish
 - Extra shock clearance
 - Moog K5208 ball joint
- | | | | |
|-----------|------|-----------|------|
| PPM6080-C | 8" | PPM6095-C | 9.5" |
| PPM6085-C | 8.5" | PPM6100-C | 10" |
| PPM6090-C | 9" | | |

LOWER CONTROL ARMS

LOWER CONTROL ARMS

ALL CONTROL ARM MEASUREMENTS ARE BALLJOINT CENTER TO ROD END CENTER

One piece lower control arms are 100% jig built, precision welded and fabricated with .095 & .125 wall seamless DOM.

Most 1-pc LCA require strut adjuster.



PPM16519-S1PCMX (1 Piece)

1 PIECE ARMS

PPM16515-S1PCR.....	15" Screw-In (Rocket)
PPM16515-S1PCBW	15" Screw-In (B. Wright)
PPM16516-P1PCRY	16-5/8" Press-In (Rayburn)
PPM16516-S1PCW	16-5/8" Screw-In (Warrior)
PPM16516-S1PCG	16-5/8" Screw-In (GRT)
PPM16516-S1PCM	16-5/8" Screw-In (Mastersbilt)
PPM16516-S1PCP	16-5/8" Screw-In (Pierce LF)
PPM16517-S1PCG	17-5/8" (Screw-In GRT)
PPM16517-S1PCM	17-5/8" 1" Screw-In Mastersbilt
PPM16517-S1PCRB	17-1/8" Screw-In Rocket Blue/Gray
PPM16517-S1PCW	17-5/8" Screw-In (Warrior)
PPM16517-S1PCRX	17-1/8" Screw-In XR1 Left
PPM16519-S1PCRX	19" Screw-In XR1 Right
PPM16517-S1PCC	17-1/8" C-29, Screw-In, Left, Dbl Shock Mt
PPM16519-S1PCC	19" C-29, Screw-In, Right Drop, Dbl Shock Mt
PPM16518-S1PCM	18-5/8" (1-5/8" Drop) Screw-In (Mastersbilt)
PPM16518-S1PCMX.....	18" Screw-In (Mastersbilt GEN-X LF)
PPM16518-S1PCP	18 1/8" Screw-In (Pierce RF)
PPM16519-P1PCRY	19" Press-In (Rayburn)
PPM16519-P1PCRYD	19" Press-In (Rayburn 1" Shock Drop)
PPM16519-S1PCBW	19" Screw-In (B. Wright RF)
PPM16519-S1PCW	19" Screw-In (Warrior)
PPM16519-S1PCG	19" Screw-In (GRT)
PPM16519-S1PCR.....	19" Screw-In (Rocket)
PPM16519-S1PCRB	19" Screw-In (Rocket Blue/Gray)
PPM16518-S1PCMX.....	19" Screw-In (Mastersbilt GEN-X RF)
PPM16516-S1PCL	16-5/8" Screw-In (Longhorn)
PPM16519-S1PCL	19-1/8" Screw-In (Longhorn)
PPM16517-S1PCR.....	17-5/8" Screw-In (Revelution)
PPM16518-S1PCR.....	18-5/8" Screw-In (Revelution)

Ask for your chassis application!



PPM16519-P (2 Piece)

2 PIECE ARMS

PPM16515-M	15" Monoball
PPM16515-P	15" Press-In
PPM16515-P5806	15" Press-In (5/8" Threaded, 06 Warrior) Rear Strut
PPM16515-S	15" Screw-In
PPM16516-M	16-5/8" Monoball
PPM16516-P	16-5/8" Press-In
PPM16516-P58	16-5/8" Press-In (5/8" End)
PPM16516-S	16-5/8" Screw-In
PPM16517-M	17-5/8" (1" Drop) Monoball
PPM16517-P	17-5/8" (1" Drop) Press-In
PPM16517-P58	17-5/8" Press-In (5/8" End)
PPM16517-S	17-5/8" (1" drop) Screw-In
PPM16518-M	18-5/8" Monoball (1" Drop)
PPM16518-P	18-5/8" Press-In
PPM16518-S	18-5/8" 1" Drop Screw-In
PPM16519-M	19" (1" Drop) Monoball
PPM16519-P	19" (1" Drop) Press-In
PPM16519-P5806	19" Press-In (5/8" Threaded 06 Warrior) Rear Strut
PPM16519-P5806ND	19" Press-In (5/8" Thread 06 Warrior) Rear NO DROP
PPM16519-P58ND	19" Press-In (5/8" Threaded End) NO DROP
PPM16519-S	19" (1" Drop) Screw-In
PPM16519-S-ND	19" (No Drop) Screw-In
PPM16518-S-DS.	18-5/8" Screw-In (1" Double Shock Mount)

Ball Joints - Page 17

ROD EYES, BUSHINGS, ADJUSTERS & MONOBALLS



COM12



Monoball Pins



PPM165SNAP



Linkage Adjuster



Solid Rod Eyes

RER12	Solid Rod Eye (3/4" - 3/4-16 Thread)
RER10	Solid Rod Eye (5/8" - 5/8-18 Thread)
RER10-12	Solid Rod Eye (5/8" - 3/4-16 Thread)
PPM16000-58	Lower Arm Bushings (1/2" - 5/8" Step)
PPM16000-34	Lower Arm Bushings (1/2" - 3/4" Step)
PPM175ADJ	Strut Linkage Adj (3/4" LH, 3/4" RH)
PPM165ADJ	Strut Linkage Adj (5/8" LH, 5/8" RH)
PPM16727	Monoball Pin (Chrysler K727)
PPM16141	Monoball Pin (GM K6141)
COM10	Monoball COM Bearing (5/8" ID)
COM12	Monoball COM Bearing (3/4" ID)
PPM165SNAP	Monoball Internal Snap Ring

THREADED TUBES

ALUMINUM THREADED TUBES



- All 5/8" tubes are right and left handed with tapered ends
- All 3/4" tubes are right and left handed
- All tubes are anodized black

5/8" HEX ALUMINUM THREADED TUBES

Part #.....	Length
PPM5806H	6"
PPM5807H	7"
PPM5808H	8"
PPM5809H	9"
PPM5810H	10"
PPM5811H	11"
PPM5812H	12"
PPM5813H	13"
PPM5814H	14"
PPM5815H	15"
PPM5816H	16"
PPM5817H	17"
PPM5818H	18"
PPM5819H	19"
PPM5820H	20"
PPM5821H	21"
PPM5822H	22"
PPM5823H	23"

3/4" HEX ALUMINUM THREADED TUBES

Part #.....	Length
PPM3407H	7"
PPM3408H	8"
PPM3409H	9"
PPM3410H	10"
PPM3411H	11"
PPM3412H	12"
PPM3413H	13"
PPM3414H	14"
PPM3415H	15"
PPM3416H	16"
PPM3417H	17"
PPM3418H	18"
PPM3419H	19"
PPM3420H	20"
PPM3421H	21"
PPM3422H	22"
PPM3423H	23"
PPM3424H	24"
PPM3425H	25"
PPM3426H	26"
PPM3427H	27"
PPM3428H	28"
PPM3429H	29"

BENT TIE RODS



RIGHT HAND 5/8" THREADED AND MADE FROM 7/8" O.D. ROUND STEEL TUBES. BENT TIE ROD TUBES ARE DESIGNED TO ALLOW MORE TIE ROD TO FRAME CLEARANCE. INCREASES ROD END TRAVEL MISALIGNMENT ANGLE.

PPM5815T	15" BENT TIE ROD
PPM5816T	16" BENT TIE ROD
PPM5817T	17" BENT TIE ROD
PPM5818T	18" BENT TIE ROD

A-ARM SHAFTS



PPM6000A	Aluminum A-Arm Shaft
PPM6000S	Steel A-Arm Shaft

SWAGED STEEL TUBES



- All Swaged tubes are right & left handed with knurls.
- Black powder coated and lightweight.

5/8" ROUND STEEL THREADED TUBES

Part #.....	Length
PPM5804S	4"
PPM5805S	5"
PPM5806S	6"
PPM5807S	7"
PPM5808S	8"
PPM5809S	9"
PPM5810S	10"
PPM5811S	11"
PPM5812S	12"
PPM5813S	13"
PPM5814S	14"
PPM5815S	15"
PPM5816S	16"
PPM5817S	17"
PPM5818S	18"
PPM5819S	19"
PPM5823S	23"
PPM5827S	27"

3/4" ROUND STEEL THREADED TUBES

Part #.....	Length
PPM3407S	7"
PPM3408S	8"
PPM3409S	9"
PPM3410S	10"
PPM3411S	11"
PPM3412S	12"
PPM3413S	13"
PPM3414S	14"
PPM3415S	15"
PPM3416S	16"
PPM3417S	17"
PPM3418S	18"
PPM3419S	19"
PPM3420S	20"
PPM3421S	21"
PPM3422S	22"
PPM3423S	23"
PPM3424S	24"

BENT 4-BAR TUBES

Bent tubes increase traction and birdcage clearance. Sold with rod ends.



PPM5812B	9" Tube, 1 1/2" ea. Rod Ends (5/8" ID)
PPM5813B	10" Tube, 1 1/2" ea. Rod Ends (5/8" ID)
PPM5814B	11" Tube, 1 1/2" ea. Rod Ends (5/8" ID)
PPM5815B	12" Tube, 1 1/2" ea. Rod Ends (5/8" ID)
PPM5816B	13" Tube, 1 1/2" ea. Rod Ends (5/8" ID)
PPM5817B	14" Tube, 1 1/2" ea. Rod Ends (5/8" ID)
PPM5818B	15" Tube, 1 1/2" ea. Rod Ends (5/8" ID)
PPM3414B	11" Tube, 1 1/2" ea. Rod Ends (3/4" ID)
PPM3415B	12" Tube, 1 1/2" ea. Rod Ends (3/4" ID)
PPM3416B	13" Tube, 1 1/2" ea. Rod Ends (3/4" ID)

SWING ARMS



Sold with rod ends. Length is center to center of rod ends.

PPMSA-145	14-3/8" Swing Arm with 3/4" ID Rod Ends
PPMSA-155	15-1/2" Swing Arm with 3/4" ID Rod Ends

CM SERIES ROD ENDS

The ball features a 52100 steel bearing that is heat treated, hard chrome plated and precision ground. The body is made of carbon steel and has a protective coating for corrosion resistance.

RIGHT HAND THREAD	LEFT HAND THREAD	B +.0015/- .0005	W +/- .005	A +/- .015	D +/- .010	C +.062/- .031	THREAD UNF-3A	MISALIGN ANGLE	RADIAL STATIC LOAD LBS	APPROX WEIGHT LBS
CMR4	CML4	.250	.375	1.562	.750	1.00	1/4-28	27	2,212	0.04
CMR6	CML6	.375	.500	1.938	1.00	1.25	3/8-24	22	5,068	0.11
CMR8	CML8	.500	.625	2.438	1.31	1.50	1/2-20	20	8,338	0.24
CMR8-10	CML8-10	.500	.625	2.438	1.31	1.50	1/2-20	20	8,338	0.24
CMR10	CML10	.625	.750	2.625	1.50	1.63	5/8-18	26	9,713	0.36
CMR10-12	CML10-12	.625	.750	2.625	1.50	1.63	5/8-18	26	9,713	0.36
CMR12	CML12	.750	.875	2.875	1.75	1.75	3/4-16	24	14,207	0.57
CMR12-757		.757	.875	2.875	1.75	1.75	3/4-16	24	14,207	0.56

CF SERIES ROD ENDS

RIGHT HAND THREAD	LEFT HAND THREAD	B +.0015/- .0005	W +/- .005	A +/- .015	D +/- .010	C +.062/- .031	THREAD UNF-3A	MISALIGN ANGLE	RADIAL STATIC LOAD LBS	APPROX WEIGHT LBS
CFR4	CFL4	.250	.375	1.312	.750	.687	1/4-28	27	3,208	0.05
CFR6	CFL6	.375	.500	1.625	1.00	.812	3/8-24	22	5,087	0.13
CFR8	CFL8	.500	.625	2.125	1.31	1.062	1/2-20	20	9,096	0.29
CFR10	CFL10	.625	.750	2.500	1.50	1.375	5/8-18	26	9,713	0.43
CFR12	CFL12	.750	.875	2.875	1.75	1.562	3/4-16	24	14,207	0.65

PCM SERIES ROD ENDS

The ball features a 52100 steel bearing that is heat treated, hard chrome plated and precision ground. The body is made of chrome moly steel and has a black oxide coating for corrosion resistance.

RIGHT HAND THREAD	LEFT HAND THREAD	B +.0015/- .0005	W +/- .005	A +/- .015	D +/- .010	C +.062/- .031	THREAD UNF-3A	MISALIGN ANGLE	RADIAL STATIC LOAD LBS	APPROX WEIGHT LBS
PCMR8	PCML8	.500	.625	2.438	1.312	1.500	1/2-20	20	17,000	0.24
PCMR8-10	PCML8-10	.500	.625	2.625	1.500	1.625	5/8-18	20	19,300	0.30
PCMR10	PCML10	.625	.750	2.625	1.500	1.625	5/8-18	26	18,000	0.36
PCMR10-12	PCML10-12	.625	.750	2.875	1.750	1.750	3/4-16	26	27,000	0.48
PCMR12	PCML12	.750	.875	2.875	1.750	1.750	3/4-16	24	25,000	0.57

XM SERIES ROD ENDS

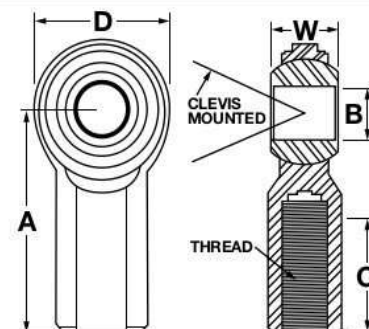
The ball features a 52100 steel bearing that is heat treated, hard chrome plated & precision ground. The body is made of alloy steel, is heat treated with a protective coating for corrosion resistance. The race includes Teflon/Kevlar design is self-lubricating & self-sealing. Metal-to-metal support for heavy shock loads. Increased cross-sectional thickness for greater tensile strength.

RIGHT HAND THREAD	LEFT HAND THREAD	B +.0015/- .0005	W +/- .005	A +/- .015	D +/- .010	C +.062/- .031	THREAD UNF-3A	MISALIGN ANGLE	RADIAL STATIC LOAD LBS	APPROX WEIGHT LBS
XMR8	XML8	.500	.625	2.438	1.312	1.500	1/2-20	20	17,000	0.24
XMR8-10	XML8-10	.500	.625	2.625	1.500	1.625	5/8-18	20	23,000	0.36
XMR10	XML10	.625	.750	2.625	1.500	1.625	5/8-18	26	18,000	0.36
XMR10-12	XML10-12	.625	.750	2.875	1.750	1.750	3/4-16	26	31,000	0.57
XMR12	XML12	.750	.875	2.875	1.750	1.750	3/4-16	24	28,000	0.57

ZINC PLATED JAM NUTS

RH	LH	THREADS
JNR4S	JNL4S	1/4-28 Zinc Plated Jam Nut
JNR6S	JNL6S	3/8-24 Zinc Plated Jam Nut
JNR8S	JNL8S	1/2-20 Zinc Plated Jam Nut
JNR10S	JNL10S	5/8-18 Zinc Plated Jam Nut
JNR12S	JNL12S	3/4-16 Zinc Plated Jam Nut

ROD END MEASUREMENTS



LIFTBARS & LINK MOUNTS

BILLET ALUMINUM LIFTBARS



- Order the assembly and be ready to go!
- PPM8500.....31"-37" Aluminum Liftbar Assembly
 - PPM8600.....34"-40" Aluminum Liftbar Assembly
 - PPM8501.....Liftbar Top Bar
 - PPM8502.....Liftbar Bottom Bar
 - PPM8507.....Aluminum Shock Bushings
 - PPM8506.....3/4"OD x 1/2"ID x 1" Long Bushing
 - PPM8505.....6th Coil Mount Block
 - PPM8504.....1/4" Thick Liftbar Brace
 - PPM8503SShort Shock Mount Plate
 - PPM8503L.....Long Shock Mount Plate
 - PPM8509.....Bottom rearend Plate
 - PPM8508.....Top Rear End Plate
 - PPM2042CW.....Side Brace Clevis
 - PPM1440.....5/8"ID Aluminum Tube
 - PPM4017.....Lift Bar Axle Mount Clamp
 - PPM8525.....25" Lift Bar Tube for PPM8500 (1/2" ends)
 - PPM8525-K.....25" Lift Bar Brace Tube Kit (Axle Mount)
 - PPM8526-K.....Liftbar Side Mount Brace Kit
 - PPM8527.....27 1/2" Lift Bar Tube (1/2" ends)
 - PPM8527-K.....27" Lift Bar Brace Tube Kit (Axle Mount)

STEEL LIFTBARS



DOM steel construction with 3/4" threaded ends and gusset bracing for strength.

SHORT KIT INCLUDES:

- CMR10-12 Rod End
- CMR12 Rod End
- CMR8-10 Rod End
- CML8-10 Rod End
- 5/8" Sleeve
- PPM1430S-R Lower Mount
- PPM1450 Upper Mount
- PPM2042C Steel Clevis

LONG KIT INCLUDES:

- CMR10-12 Rod End
- CMR12 Rod End
- CMR8-10 Rod End
- CML8-10 Rod End
- 5/8" Sleeve
- PPM1430S-R Lower Mount
- PPM1420 Upper Mount
- PPM2042C Steel Clevis

- PPM8700.....Universal Short Liftbar Kit (39")
- PPM8800.....Universal Long Liftbar Kit (44")
- PPM8900.....Longhorn Liftbar
- PPM8900K.....Longhorn Liftbar Kit

QC REAR LINK MOUNTS



- PPM1400.....9010 Upper Link Mount (3 Hole)
- PPM1410.....9010 Upper Link Mount (2 Hole)
- PPM1420.....9010 Upper Link Mount (Short) (3/4" T/A Hole)
- PPM1425.....9010 Upper Link Mount (Short) (5/8" T/A Hole)
- PPM1430S-R.....Lower Link Mount (3 Hole) Steel
- PPM1430S-W.....Lower Link Mount (3 Hole) Steel (Warrior)
- PPM1450.....Upper Lift Bar Mount
- PPM1455.....Upper Lift Bar Mount (Warrior) Steel
- PPM1460.....9010 Upper Link Mount (4 Hole)
- PPM1001BB.....Longhorn Rear End Bottom Plate
- PPM1001TB.....Longhorn Rear End Top Plate
- PPM1000BL.....Bolt-On 4-Bar Bracket, Left Rear
- PPM1000BR.....Bolt-On 4-Bar Bracket, Right Rear
- PPM1480.....Upper Lift Bar Mount
- PPM1485.....Lower Link Bar Mount (3 Hole) Steel
- PPM1440.....Crosstube 4-7/8" Long (5/8" ID)
- PPM1440-34.....Crosstube 4-7/8" Long (3/4" ID)
- PPM4065A.....1/2" Step Bushing, 3/4"-1/2" Spacer

Used for bracing between 90/10 plates.



MUFFLERS

Available for 3" & 3-1/2" collectors, 8" long, reduces decibels without excessive back pressure.



- PPM617-83030.....3" Racing Muffler
- PPM617-83535.....3-1/2" Racing Muffler

LOW FRICTION BALL JOINTS

Low friction ball joints reduce steering effort and results in smoother suspension travel. QA1 ball joints are rebuildable with a unique patented design that is strong and extremely wear resistant. They are built with high strength molded polymer cup that provides low-friction movement in low-load applications. The hardened black oxide ball stud is designed for superior strength & minimal wear. Oil impregnated steel spider allows free movement under high loads.



BALL JOINT SOCKET STYLE SPANNER KIT



QA1-1891-106

UPPER BALL JOINTS

	UPPER BALL JOINT	REPL. BALL STUDS	+5 BALL STUDS	HOUSING
QA1 4-Bolt / Chevy (Moog K6024)	QA1-1210-101	QA1-9029-220	QA1-9029-201	QA1-1210-501
QA1 4-Bolt / Small Chevy (Moog K5208)	QA1-1210-104	QA1-9029-222	QA1-9029-205	QA1-1210-504
QA1 Screw-In / Mopar (Moog K772)	QA1-1210-105	QA1-9029-220	QA1-9029-201	QA1-1210-505
QA1 Screw-In / Mopar (+.1)	QA1-1210-200S	QA1-9029-200	+1	QA1-1210-505

LOWER BALL JOINTS

	LOWER BALL JOINT	REPL. BALL STUDS	+5 BALL STUDS	HOUSING
QA1 Screw-In / Chevy	QA1-1210-102	QA1-9029-223	QA1-9029-215	QA1-1210-502
QA1 Press-In / Chevy (Moog K6141)	QA1-1210-102P	QA1-9029-223	QA1-9029-215	QA1-1210-502
QA1 Screw-In / Mopar (Moog K727)	QA1-1210-106	QA1-9029-224	QA1-9029-217	QA1-1210-506
QA1 Press-In / Chevy (Moog K6117T)	QA1-1210-108	QA1-9029-226	QA1-9029-219	QA1-1210-508
QA1 Press-In / Chevy (Moog K6145T)	QA1-1210-109	QA1-9029-227	QA1-9029-209	QA1-1210-509
QA1 Press-In / Chevy (Moog K5103)	QA1-1210-110	QA1-9029-228	QA1-9029-211	QA1-1210-510
QA1 Screw-In / Mopar	QA1-1210-206S	QA1-9029-206	-	QA1-1210-507
QA1 Screw-In / Mopar (+.1)	QA1-1210-216S	QA1-9029-216	+1	QA1-1210-506
QA1 Screw-In / Mopar (+.5)	QA1-1210-217S	QA1-9029-217	+5	QA1-1210-506

STOCK TYPE BALL JOINTS



K6141	Press-in GM Lower
K727	Screw-in Chrysler Lower
K6024	4-Bolt GM Upper
K772	Screw-in Chrysler Upper
K5208	Small Upper Bolt-In

TURN OUT

Available in 3" & 3-1/2", 10" length



PPM617-83036	3" Header Turnout
PPM617-83536	3-1/2" Header Turnout

BALL JOINT SOCKETS

Installing ball joints has never been easier. These Ball Joint Sockets are machined out of steel, ziet or breaker bar. Now you don't have to use that big old clumsy Crescent wrench.



PPM1210-40050	Socket (Upper Moog K772)
PPM1210-40075	Socket (Lower Moog K727)
PPM9033-226	Adapter Sleeve (K6141 Press-in to K727 Screw-in)
PPM-772AA	Upper Ball Joint Holder
CR6-10	Clevis (5/8-18 Thread, 3/8" Hole, 3-3/8")

A-ARM SPACERS



PPM6000-12	1/8" Thick Aluminum
PPM6000-25	1/4" Thick Aluminum
PPM6000-01	1" Thick Aluminum
PPM16000-01	LCA 5/8 - 1/2" Spacer (#12-10 Rod end)
PPM16000-02	LCA 3/4 - 1/2" Spacer (#12 Rod end)

RACK & PINION

INTEGRATED RACK & PINION STEERING



Integrated Rack & Pinions are available in 11 different ratios with several different rack ends, center distances and servos. Every rack & Pinion is produced and assembled in the USA by Sweet Manufacturing.

005- **93** **3** **4** **5** **235**
(A) **(B)** **(C)** **(D)** **(E)**

DUAL POWER ROD END EYE WITH INTERNAL SERVO

SWE005-91343-###	3-1/2" 18-1/4"
SWE005-91344-###	3-1/2" 18-1/4" On Center
SWE005-91345-###	3-1/2" 18-1/4"
SWE005-91346-###	3-1/2" 18-1/4" Upside Down Slotted Eye
SWE005-91643-###	3-1/2" 19-1/4"
SWE005-91644-###	3-1/2" 19-1/4" On Center
SWE005-91645-###	3-1/2" 19-1/4"
SWE005-91743-###	3-1/2" 19-3/4"
SWE005-91744-###	3-1/2" 19-3/4"
SWE005-91745-###	3-1/2" 19-3/4" Slotted Eye
SWE005-92343-###	3-3/4" 18-1/4"
SWE005-92344-###	3-3/4" 18-1/4" On Center
SWE005-92345-###	3-3/4" 18-1/4" Slotted Eye
SWE005-92346-###	3-3/4" 18-1/4" Upside Down Slotted Eye
SWE005-92643-###	3-3/4" 19-1/4"
SWE005-92644-###	3-3/4" 19-1/4" On Center
SWE005-92645-###	3-3/4" 19-1/4" Slotted Eye
SWE005-92743-###	3-3/4" 19-3/4"
SWE005-92744-###	3-3/4" 19-3/4" On Center
SWE005-92745-###	3-3/4" 19-3/4" Slotted Eye
SWE005-93343-###	4" 18-1/4"
SWE005-93344-###	4" 18-1/4" On Center
SWE005-93345-###	4" 18-1/4" Slotted Eye
SWE005-93346-###	4" 18-1/4" Upside Down Slotted Eye
SWE005-93643-###	4" 19-1/4"
SWE005-93644-###	4" 19-1/4" On Center
SWE005-93645-###	4" 19-1/4" Slotted Eye
SWE005-93743-###	4" 19-3/4"
SWE005-93744-###	4" 19-3/4" On Center
SWE005-93745-###	4" 19-3/4" Slotted Eye
SWE005-93847-235	4" 18-19-1/4" Dual R-E-E (Rocket)
SWE302-32200	Integrated Servo with .200 Valve
SWE302-32210	Integrated Servo with .210 Valve
SWE302-32220	Integrated Servo with .220 Valve
SWE302-32235	Integrated Servo with .235 Valve
SWE302-32250	Integrated Servo with .250 Valve
SWE302-32275	Integrated Servo with .275 Valve
SWE302-32101	Integrated Rack Replacement Line (Long)
SWE302-32102	Integrated Rack Replacement Line (Short)
SWE302-32063	Dual Power Cylinder (1 3/8" bore)

(A) RACK SPEED

- 30 = 1-7/8"
- 40 = 2"
- 50 = 2-1/4"
- 60 = 2-1/2"
- 80 = 3"
- 90 = 3-1/4"
- 91 = 3-1/2"
- 92 = 3-3/4"
- 93 = 4"
- 94 = 4-1/4"
- 95 = 4-1/2"

(B) CENTER DISTANCE

- 1 = 16-1/2"
- 2 = 17-1/4"
- 3 = 18-1/4"
- 5 = CUSTOM
- 6 = 19-1/4"
- 7 = 19-3/4"
- 8 = 18/19-1/4"

(C) POWER ASSIST

- 1 = Manual
- 4 = Dual Power
- 5 = XL Dual Power

(D) RACK ENDS

- 2 = On Center
- (5/8"-18 Threaded Stud)
- 3 = Rod End Eye
- (5/8"-18 Threaded Hole)
- 4 = On Cntr Rod End Eye
- 5 = Standard Slotted Eye
- 6 = Upside Down Slotted Eye
- 7 = Dual Hole Rod End Eye (Rocket)
- 8 = RH On Cntr Rod End - LH Rod End Eye
- 11 = Slotted-RH Down - LH Up

(E) SERVO

- .185 = XX Light
- .200 = X Light
- .210 = Light
- .220 = Light
- .235 = Med Light
- .250 = Medium
- .265 = Medium Hvy
- .275 = Heavy



COLLAPSIBLE STEERING COLUMNS & COMPONENTS



Adjustable columns eliminate flex & bind in the steering shaft. Length is measured from end of housing to beginning of adjustable shaft.

PPM405-10310	22-32"
PPM405-10325	32-42"
SWE405-10315	(GRT) 28-34"
SWE405-10326	(Monoball)



RACK EYES

DPCB=Dual Power Cylinder Bracket

SWE001-21110	LH On Center Rod Eye DPCB
SWE001-21111	RH On Center Rod Eye DPCB
SWE001-21103	LH 5/8" Rod End Rack Eye DPCB
SWE001-21104	RH 5/8" Rod End Rack Eye DPCB
SWE001-21114	On-Center Rod End with Nut Spacers
SWE001-21105	RH (Rocket) Double Rack Eye DPCB
SWE001-21089	RH 1" Extended Rack Eye DPCB
SWE001-21011	16-7/16" Rack Shaft for 18-1/4" Rack
SWE001-21018	17-7/16" Rack Shaft for 19-1/4" Rack
SWE001-21116	LH Slotted Rack Eye DPCB
SWE001-21117	RH Slotted Rack Eye DPCB
SWE001-21126	LH Slotted Upside Down Rack Eye DPCB
SWE001-21127	RH Slotted Upside Down Rack Eye DPCB
SWE001-21106-1	RH Double Slotted Rack Eye
SWE001-21118	Slotted Rack Eye Bolt Kit (each)

SWE405-10369	Sweet Steering Column Rod End
PPM405-10150	Column Dash Brackets 1.5" Clamp (pr)
PPM405-10240	3/4" Monoball Steering Collar
SWE405-10243	1-1/8" Monoball Steering Collar
PPM1150	Steering Shaft Collar 3/4"ID (2-Piece)
PPM68-015	360° Wheel Disconnect 19-Spline
OTW-32-2988-01	Shockwear Rack Armor Guard
SWE405-10040	Collapsible Column Dust Boot
SWE001-21040	Sweet Rack Dust Boot
CMR12-757	Oversized .757"ID Shaft Rod End
PPMDOM-3/4-3	Steering Shaft 3/4"OD DOM, 3' Long
PPMDOM-3/4-6	Steering Shaft 3/4"OD DOM, 6' Long

SWEET MFG POWER STEERING PUMPS & BRACKETS



- SWE305-60331 Aluminum Pump, 1300 psi with Pulley - Engine Mount
- SWE305-70331 Sportsman Steel Pump with Pulley - Engine Mount
- SWE325-30034 Chevy Engine Block Mount Kit
- SWE325-30030 Chevy Head Mount Kit
- SWE325-30036 ... Pump Bracket-to-Head Bolt Kit (for 325-30030)
- SWE325-30037 Pump/Bracket Bolt Kit (for 325-30030)
- SWE325-30039 Pump Bracket-to-Block Bolt Kit (for 325-30034)
- SWE305-60334 Aluminum PTO Pump (No Brackets)
- SWE325-30057 PTO Rear Mount Adapter Kit
- SWE325-30055 Peterson/Toyota P/S Adapter
- SWE325-30059 Phenolic Spacer
- SWE325-30060 Threaded Hex Drive for PTO Pump
- SWE305-60339 .. Aluminum Pump 1300 psi with 33T HTD Pulley
- SWE325-30041 Bert/Brinn Bellhousing Bracket w/Bolts
- SWE305-85839 Aluminum Pump, 1300 psi with Fuel Pump Drive 33T HTD
- SWE325-30042 Fuel Pump Adapter Plate with Bolts
- SWE325-30043 Fuel Pump Phenolic Spacer
- SWE325-30044 Bellhousing Pump Mount with Fuel Pump Adapter
- SWE301-30043 HTD Pulley, 33-Tooth with Guides
- SWE308-10100 SBC Mechanical Pump Mount with Fuel Pump Adapter

POWER STEERING LINES & TANKS



- PPMPS-KIT-FRT P/S Line Kit (Rear Mount)
- PPM01204 P/S Line Kit (Front Mount)
- PPM01205 P/S Line Kit (Front Mount)
- PPM01203 P/S Tank Firewall Mount -10AN Outlet -06AN
- SWE301-30071 Sweet 7" Power Steering Tank
- PPM01202 P/S Tank -10AN Outlet, -06AN Side
- PPM01202L P/S Tank Lid (for PPM1202 and 1203)
- PPM01201 P/S Tank Mounting Bracket

POWER STEERING PUMP MOUNTS



- PPM325-30030 SBC PS Pump Head Mount
- PPM325-30034 SBC PS Pump Block Mount

KRC POWER PUMPS & PARTS



- ### ELITE SERIES POWER STEERING PUMPS, PARTS
- ESP19010015 V-belt, remote tank, iron pump
 - ESP19010010 V-belt, remote tank, alum pump
 - ESP19610000 V-belt pulley, alum pump
 - ESP19620000 Serpentine pump, pulley
 - ESP18010110 V-belt tank, head mount
 - ESP18010115 V-belt tank, block mount
 - ESP19610100 V-belt pump with reservoir
 - ESP19620100 Serpentine pump with reservoir

PULLEYS

- KRC40160000 4.2" Serpentine Pulley
- KRC40160500 6.0" Serpentine Pulley
- KRC40161600 6.0" V-belt Pulley
- KRC40160632 32 Tooth HTD Pulley
- KRC40160640 40 Tooth HTD Pulley

OTHER KRC PARTS

- KIT16225604 Crate Serpentine Water Pump Drive Kit
- ESP10096821 Pump w/pto for pump mounted fuel pump
- KIT16122600 Serpentine Water Pump Drive Kit (10 rib pulley)
- KRC60750000 Bellhousing Mnt Kit for KRC Steering pumps
- ESP10096000 Pump - without Pulley
- ESP10096100 Pump - with Tank without Pulley
- KRC15375000 1" Water Neck Spacer
- KRC38335000 3.5 V-belt R-Lok Crank Pulley
- KRC16312610 Chevrolet Basic Crate Left Side Engine Kit
- KRC16320615 Complete Crate Engine Kit-Block Mnt
- KRC40400300 Adj Idler Tensioner Assembly, SBC
- KRC77525200 CT 525 Drive Kit w/Tensioner & Motor Mounts

STEERING UNIVERSAL JOINTS & SHAFT



- SWE401-50615 3/4" Smooth x 3/4"-30 Spline
- SWE401-50621 3/4" Smooth x 3/4"-20 Spline
- SWE401-50606 3/4" Smooth x 3/4"-30 Smooth
- SWE401-50610 3/4" Smooth x 3/4"-48 Spline
- SWE401-50611 3/4" Smooth x 13/16"-36 Spline
- SWE401-50612 3/4" Smooth x 3/4"-36 Spline
- SWE401-51518 3/4"-30 Spline x 1"-48 Spline
- SWE401-50618 3/4" Smooth x 1"-48 Spline
- SWE401-51818 3/4"-48 Spline x 1"-48 Spline
- SWE405-10410 1"-48 Splined Stub (Chromoly)
- SWE401-50656 U-Joint Jam Nut & Set Screw
- PPM9192 Firewall Bearing
- PPM1470 Aluminum Rack Plate (1/4" Thick)
- SWE301-30090 Power Steering Fluid (Quart)

SHOCKS & COMPONENTS

TWIN TUBE STEEL SHOCK

QA1 51 Series Steel Replaceable Bearing Shock Circle Track Twin Tube Large Body Shock Absorber

Racer Revalveable and Rebuildable – Have 10 minutes? That's all it takes. Easy-to-follow instructions can give you the performance edge.

Premium Aluminum Piston

Incorporates dual bleed circuits for standard or custom valvings, including extreme split valvings.

Non-Fading

QA1 uses a premium proprietary blend of specially engineered oil to prevent fade.

15mm Centerless Ground, Hard Chrome Plated, Solid Piston Rod

Precision surface eliminates piston rod flex, increasing valving consistency.

Deflective Disk Valving

Damping curve allows for complete control of suspension at low shaft speeds without creating extreme forces at high shaft velocities.

Twin Tube Design

Outer tube can get dented without binding the shock.

Can be Run Upside Down

Can be mounted upside down with no change in rate to reduce unsprung weight.

2-1/16" O.D. Steel Body

Replaceable 1/2" I.D. Bearings

100% Dyno Tested and Serialized

Custom Valving Available

Dyno Sheets Available

51 SERIES

Racer, Revalveable, Rebuildable

This race winning shock's red steel body has been making regular appearances in victory lanes all over the country for years. With hundreds of championships, racers love the durability, repeatability and performance.

7" STROKE	5173	9" STROKE	519-D
	5173-5		5193
	5173-6		5193-5
	5173-8		5194
	5174		5194-6
	5174-6		5195
	5175		5196
	5175-3		5196-2
	5175-7		5197-2
	5176		5197-4
	5176-2		5198-2
	5176-4		5199-2
	5176-1		519X*
	517X*		

SERIES	STROKE	COMPRESSION	REBOUND
51	7	5	-3

*Custom valvings available at an additional charge

#TKOI Tuning Kit to revalve any 51 Series Shock



ALUMINUM THREADED BODY SHOCK

QA1 62 Series Steel Replaceable Bearing Shock Circle Track Twin Tube Large Body Shock Absorber

Forged 6061-T6 aerospace quality aluminum. Machined for longevity and strength. Racer revalveable and rebuildable.

Premium Aluminum Piston

Incorporates dual bleed circuits for standard or custom valvings, including extreme split valvings.

Non-Fading

QA1 uses a premium proprietary blend of specially engineered oil to prevent fade.

15mm Centerless Ground, Hard Chrome Plated, Solid Piston Rod

Precision surface eliminates piston rod flex, increasing valving consistency.

Deflective Disk Valving

Damping curve allows for complete control of suspension at low shaft speeds without creating extreme forces at high shaft velocities.

Twin Tube Design

Outer tube can get dented without binding the shock.

Can be Run Upside Down

Can be mounted upside down with no change in rate to reduce unsprung weight.

Replaceable 1/2" I.D. Bearings

100% Dyno Tested and Serialized

Custom Valving Available

Dyno Sheets Available

2" O.D. Steel Body

62 SERIES

Racer, Revalveable, Rebuildable

This race winning shock has been making regular appearances in victory lanes all over the country for years. Racers love the durability, repeatability and performance of this shock.

7" STROKE	6273	9" STROKE	6293
	6273-5		6293-5
	6274		6294
	6274-6		6294-6
	6274-10		6295
	6275		6296
	6275-3		6296-4
	6275-7		6297-2
	6275-8		629X**
	6275-4		
	6276-11		
	6276		
	627X**		

SERIES	STROKE	COMPRESSION	REBOUND
62	7	5	-3

**Custom valvings available at an additional charge

#TKOI Tuning Kit to revalve any 62 Series Shock



TWIN TUBE STEEL SHOCK

- PPM9029-168..... 1" Length 7/16-20 Thread
- PPM9029-169..... 1-1/2" Length 7/16-20 Thread
- PPM9029-165..... 1" Length 1/2-20 Thread
- PPM9029-166..... 2" Length 1/2-20 Thread
- PPM9029-163..... 1" Length 9/16-18 Thread
- PPM9029-167..... 1-1/2" Length 9/16-18 Thread
- PPM9029-164..... 2" Length 9/16-18 Thread



BEARING MOUNTS

9036-104



- QA1-9036-104..... Bearing Mount (Aluminum)
- QA1-9036-103..... Bearing Mount (Steel)
- QA1-SIB8-101PK..... (2 ea.) Replacement Bearing Kit
- QA1-9036-200..... Bearing Mount 1" Ext Eyelet
- QA1-9036-201..... Bearing Mount 2" Ext Eyelet

RACING SHOCKS

LEFT REAR ULTIMATE RACING SHOCKS

Left Rear Ultimate Shock

Base Valve Technology allows you to run variable gas pressures regardless of compression valves from 15 psi to 250 psi. Features a wide range of compression adjustment. "Floating Rebound" technology produces the softest rebound valves in the industry on a compression adjustable shock. Compression is adjustable using the "Grip Twist" rod end.



ADJUSTER	VALVE
-0 Clicks Full Stiff	9
-4	8
-6	7
-8	6
-10	5.5
-16 Clicks Full Soft	5

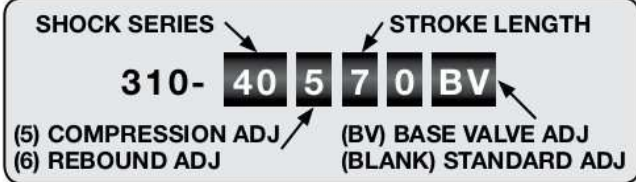
PPMSI-310-40590LRF-ULT.....LR Ultimate Shock



ALUMINUM STEALTH SERIES SHOCKS

Aluminum Stealth Series Single Adjustable Shock

- Perfect for 5th coil or wrap-up shock
- Compression or Rebound adjustable
- Rod end style adjuster for easy accessibility on or off the car
- Positive detents on adjuster knob assures that you are on the proper setting



Part # Compression Extension Valving

7" Aluminum Mono-Tube Shock - Rebound Adjustable

PPMSI-310-40670-5TH 14-1/2"21-1/4"5th Coil

QA1 SHOCK REBUILD KITS

Rebuild kits include: PTFE/carbon fiber band (1) piston rod seal, (2) A-rings, (1) travel indicator ring. Components for one shock.

- QA1-RK01 Rebuild Kit 51, 53, 62 Series)
- QA1-RK02 Rebuild Kit (50, & FC Series)
- QA1-RK04 Rebuild Kit (70 & 82 Series)
- QA1-RK10 Rebuild Kit (16, 26, 28 Series)
- QA1-SF04..... Shock Oil 1-Quart

INTEGRA SHOCK THREAD PROTECTOR

PPMSPS-IShock Thread Protector



INTEGRA 484 SERIES PIGGYBACK SHOCKS

2-Way Adjustability
Utilizes Attached
Gas Reservoir

484 SERIES PIGGY BACK NEW!



Integra Racing 484 Series Piggy Back Shocks offers 2-way adjustability while utilizing an attached gas reservoir, specifically placed for front and rear mounting. Newly designed canisters feature an internal bladder, linear base valve, and needle style bleed adjuster - all resulting in quicker lap times due to increased driver feel. Available with a wide variety of piston options, and multiple Rod End options you'll easily be able to dial in your shocks to be a perfect fit for your car and track combination.



Newly Designed Integrated Needle and Adjuster Shaft

- PPMSI-310-48470-RF7", Right Front
- PPMSI-310-48470-LF7", Left Front
- PPMSI-310-48490-RR9", Right Rear
- PPMSI-310-48490-LR.....9", Left Rear

INTEGRA SHOCK ROD ENDS



- 60030-50 Grip Twist
- 30409 Fine Tune Grip Twist
- 30409-1 1" Ext Grip Twist
- 30402 Standard Alum
- 30402S Standard Steel
- 30403 1" Extended Alum
- 30403S 1" Extended Steel
- 30404 2" Extended Alum
- 30404S 2" Extended Steel
- 60030-50 Standard IDA
- 60029-50 1" Extended IDA
- 60031 IDA Tumbler
- 60035 #8-32 Cone Point Set Screw
- 90030 -1/2" Standard Rod End
- 90032 Standard Rod End
- 90034 +1" Standard Rod End

QA1 SHOCK TUNING KITS

- QA1-TK01 ... Large Body Tuning Kit (50,57,60,62, 67)
- QA1-TK02 Small Body Tuning Kit (70, & 82 Series)



SHOCKS & SUSPENSION COMPONENTS

REMOTE CANISTER DOUBLE ADJUSTABLE SHOCKS

Feel like you're sitting on top of the race track? Get the advantage of a mono-tube shock with the feel of a twin-tube shock! Integra's Double Adjustable Shocks offer the lowest rod pressure in the industry available in a mono-tube design.

Patent pending Poppet Bleed piston allows for unparalleled low speed control

Independent compression and rebound control

17-4 stainless steel, heat treated, hard chromed, polished shafts

Low friction seals and O-rings

Available in linear and digressive valvings

Wide range of adjustment allows you to tune to every track condition you may encounter



Call for specific valving today!



- PPMSI-310-40470-LF 7" Double Adjustable LF
- PPMSI-310-40470-RF 7" Double Adjustable RF
- PPMSI-310-40490-LR 9" Double Adjustable LR
- PPMSI-310-40490-RR 9" Double Adjustable RR

IDA INTERNAL DOUBLE ADJUSTABLE SHOCKS



- PPMSI-310-60470-LF 7" Double Adj. LF
- PPMSI-310-60470-RF 7" Double Adj. RF
- PPMSI-310-60490-LR 9" Double Adj. LR
- PPMSI-310-60490-RR 9" Double Adj. RR



INTEGRA TOOLS



- PPMS7797-147 Deluxe Inflation Unit
- PPMSI-310-30900-1 Integra Shock Oil - Quart
- PPMSI-310-30902-1 Integra Shock Oil - Gallon
- PPMSI-310-30221 Adjuster Nut Spanner Wrench



DUAL STAGE STACKED SPRINT KIT

Dual stage stacked spring kit is used on RF of Dirt Late Models. Allows for the car to roll on RF easily, before the stiffer spring is contacted. By setting the gap between the slider & lockout nut you control how fast, or how much the initial softer spring rate works.



- PPMSI-310-30550 Dual Stage Stacked Spring Kit
- PPMSI-310-30550-1 Dual Stage Stacker Nut
- PPMNSS Nylon Stacked Spring Slider (2.5")

INTEGRA STEEL BODY COIL-OVER KITS



PPMSI-310-30525

- PPMSI-310-30525 5" - 4200 Series
- PPMSI-310-30526 5" - 4000 Series
- PPMSI-310-30527 5" - 4300 Series

SUSPENSION TUNING TOOLS



Bump Stop Shim Kits

PPMSI-310-30113



Penske Black

Coil-Over Spring Rubbers

- RE-SR250B-1000-60 60 Purple Barrek Spring
- RE-SR250B-1000-90 90 Blue Barrek Spring
- PPMS30112-1 1" Soft-Yellow (Urethane)
- PPMS30113-1 1" Medlum-Orange (Urethane)
- PPMS30114-1 1" Hard-Red (Urethane)
- PPM30122 1" Soft (Speedthane)
- PPM30123 1" Medium (Speedthane)
- PPM30124 1" Hard (Speedthane)

Bump Stops

- PPMS3018-27 Red, Soft, 2.28"
- PPMS3018-33 White, Med, 2.28"
- PPMS3018-39 Blue, Hard, 2.28"
- PPMS3019-41 Red, Soft, 3"
- PPMS3019-50 White, Med, 3"
- PPMS-3019-59 Blue, Hard, 3"
- PPMS-132BR28 Penske, Red
- PPMS-132BR32 Penske, Yellow
- PPMS-132BR38 Penske, Black
- PPMS-132BR47 Penske, Blue

Bump Stop Cup Kits

- PPMS3019-01 Bump Stop Cup

Bump Stop Shim Kits

- ALL64450-25 1/16" Shock Shim (25 ea.)
- ALL64404 14mm Deluxe Shim Kit
- ALL64444 16mm Deluxe Shim Kit
- PPMS3019-02 (2) 1/8" Thick & (1) 1/2"
- PPMS3019-03 (2) 1/8" Thick & (1) 5/8"

Bump Stop Pucks

- PPM30116 3/4" Tall, Green 50 Soft
- PPM30120 3/4" Tall, Black 65 Soft
- PPM30121 1" Tall, Black 65 Soft
- PPM30117 3/4" Tall, Yellow 75 Medium
- PPM30118 3/4" Tall, Red 87 Hard
- PPM30119 3/4" Tall, Purple 87 Hard

SHOCKS & COMPONENTS

LMP SERIES ADJUSTABLE SHOCKS

The LMP is based off of the championship winning LMJ shock but is upgraded to a piggyback style reservoir. The LMP piggy back cylinder head offers many advantages over the hose style shock absorber.

The large port cylinder heads oil flow path is highly efficient. Less risk of cavitation due to the less restricted, efficient flow of oil. They feature a better performing 808-R compression valve and have improved reliability because of the elimination of hose. Ease of installation, no remote reservoir to mount.



Call for specific valving today!

- OHL-LMP2072 LMP Series Shock, LF 7" Stroke
- OHL-LMP2073 LMP Series Shock, RF 7" Stroke
- OHL-LMP2392 LMP Series Shock, LR 9" Stroke
- OHL-LMP2393 LMP Series Shock, RR 9" Stroke

LMJ SERIES



Lightweight aluminum body with large reservoir for better cooling and 2-way adjustable damping. Quick response for best handling. Easy dial-in, reshim, rebuild and service infinite valve and piston combinations available.

Call for specific valving today!

- OHL-LMJ2072 LMJ Series, LF 7" Stroke
- OHL-LMJ2073 LMJ Series, RF 7" Stroke
- OHL-LMJ2392 LMJ Series, LR 9" Stroke
- OHL-LMJ2393 LMJ Series, RR 9" Stroke



TAKE UP SPRING KITS



- PPMNSS-KIT..... Take-Up Spring & Slider Cup
- PPMNSS-O Öhlins/Afco Stacked Spring Slider
- HYPDS650 Flat Take-Up Spring
- PPM225..... 2" Aluminum Spring Spacer
- PPM215..... 1" Aluminum Spring Spacer
- HYPDS100..... Hyperco Stacked Spring Divider (2.5" ID)

CANISTER BRACKET

Rubber mounting face to prevent scratching. Clamp mount, fits most canisters on the market.

- PPM1190..... 1-1/2" Canister Bracket
- PPM1195..... 1-3/4" Canister Bracket



STJ SERIES

Features lightweight aluminum body and are easy to rebuild, reshim and service. Optional Coil-Over Kit sold separately.



- OHL-OTJ1960 STJ Series Shock, 5th 7"
- OHL-OTJ2592 STJ Series Shock, LR Front 9" Stroke



ÖHLINS COMPONENTS



- OHL-05018-02 Öhlins Coilover Nut LMJ/LMP
- OHL-00629-04 Öhlins Coilover Cone LMJ/LMP
- OHL-30550 Dual Stage Lock Out Nut
- OHL-30551 ILX Dual Stage Lock Out Nut

ÖHLINS END EYE ASSEMBLIES - LMP/LMJ



- OHL-01054-26M 2" Ext Length Adj
- OHL-01054-27M 1" Ext Length Adj
- OHL-01255-18 Standard Length Adj



ÖHLINS SHOCK TOOLS



- OHL-U01781-01..... ÖHLINS Gas Filling Tool
- PPMS-T111W..... ÖHLINS Shock Wrench
- OHL-01304-01 ÖHLINS Shock Oil
- OHL-00778-01 Inflation Needle, 22G 1.5

LUG NUTS



- PPM1200A10 5/8-11 Double Chamfer (Aluminum - Black Teflon Coated) 10-Pack
- PPM1200A20 5/8-11 Double Chamfer (Aluminum - Black Teflon Coated) 20-Pack
- PPM1200S10 5/8-11 Double Chamfer (Steel) 10-Pk
- PPM1200S20 5/8-11 Double Chamfer (Steel) 20-Pk
- PPM1210S10 1/2-20 Steel Lug Nut (Steel) 10-Pk
- PPM1210S20 1/2-20 Steel Lug Nut (Steel) 20-Pk

2.5" I.D. & 2.5" I.D. ULTRA HIGH TRAVEL SPRINGS

4" HIGH TRAVEL SPRINGS

HYP4B0350.....	4"/350
HYP4B0400.....	4"/400
HYP4B0450.....	4"/450
HYP4B0500.....	4"/500
HYP4B0600.....	4"/600
HYP4B0700.....	4"/700

6" HIGH TRAVEL SPRINGS

HYP6B0300.....	6"/300
HYP6B0350.....	6"/350
HYP6B0400.....	6"/400
HYP6B0450.....	6"/450
HYP6B0500.....	6"/500
HYP6B0550.....	6"/550
HYP6B0600.....	6"/600
HYP6B0650.....	6"/650
HYP6B0700.....	6"/700
HYP6B0750.....	6"/750
HYP6B0800.....	6"/800
HYP6B0850.....	6"/850
HYP6B0900.....	6"/900
HYP6B1000.....	6"/1000
HYP6B1100.....	6"/1100
HYP6B1200.....	6"/1200
HYP6B1300.....	6"/1300

7" HIGH TRAVEL SPRINGS

HYP7B0100.....	7"/100
HYP7B0125.....	7"/125
HYP7B0150.....	7"/150
HYP7B0175.....	7"/175
HYP7B0200.....	7"/200
HYP7B0225.....	7"/225
HYP7B0250.....	7"/250
HYP7B0275.....	7"/275
HYP7B0300.....	7"/300
HYP7B0325.....	7"/325
HYP7B0350.....	7"/350
HYP7B0375.....	7"/375
HYP7B0400.....	7"/400
HYP7B0450.....	7"/450
HYP7B0500.....	7"/500
HYP7B0550.....	7"/550
HYP7B0600.....	7"/600
HYP7B0650.....	7"/650
HYP7B0700.....	7"/700
HYP7B0750.....	7"/750
HYP7B0800.....	7"/800
HYP7B0850.....	7"/850
HYP7B0900.....	7"/900

7" HIGH TRAVEL SPRINGS

HYP7B0950.....	7"/950
HYP7B1000.....	7"/1000
HYP7B1100.....	7"/1100
HYP7B1200.....	7"/1200
HYP7B1300.....	7"/1300

8" HIGH TRAVEL SPRINGS

HYP8B0100.....	8"/100
HYP8B0125.....	8"/125
HYP8B0150.....	8"/150
HYP8B0175.....	8"/175
HYP8B0200.....	8"/200
HYP8B0225.....	8"/225
HYP8B0250.....	8"/250
HYP8B0275.....	8"/275
HYP8B0300.....	8"/300
HYP8B0325.....	8"/325
HYP8B0350.....	8"/350
HYP8B0375.....	8"/375
HYP8B0400.....	8"/400
HYP8B0425.....	8"/425
HYP8B0450.....	8"/450
HYP8B0475.....	8"/475
HYP8B0500.....	8"/500
HYP8B0525.....	8"/525
HYP8B0550.....	8"/550
HYP8B0575.....	8"/575
HYP8B0600.....	8"/600
HYP8B0650.....	8"/650
HYP8B0700.....	8"/700
HYP8B0750.....	8"/750
HYP8B0800.....	8"/800
HYP8B0850.....	8"/850
HYP8B0900.....	8"/900
HYP8B0950.....	8"/950
HYP8B1000.....	8"/1000
HYP8B1100.....	8"/1100
HYP8B1200.....	8"/1200

10" HIGH TRAVEL SPRINGS

HYP10B095.....	10"/95
HYP10B0110.....	10"/110
HYP10B0125.....	10"/125
HYP10B0150.....	10"/150
HYP10B0162.....	10"/162
HYP10B0175.....	10"/175
HYP10B0175/500.....	175/500
HYP10B0200.....	10"/200
HYP10B0225.....	10"/225
HYP10B0250.....	10"/250

10" HIGH TRAVEL SPRINGS

HYP10B0275.....	10"/275
HYP10B0300.....	10"/300
HYP10B0325.....	10"/325
HYP10B0350.....	10"/350
HYP10B0375.....	10"/375
HYP10B0400.....	10"/400
HYP10B0425.....	10"/425
HYP10B0450.....	10"/450
HYP10B0475.....	10"/475
HYP10B0500.....	10"/500
HYP10B0525.....	10"/525
HYP10B0550.....	10"/550
HYP10B0575.....	10"/575

HYP10B0600.....	10"/600
HYP10B0625.....	10"/625
HYP10B0650.....	10"/650
HYP10B0675.....	10"/675
HYP10B0700.....	10"/700
HYP10B0725.....	10"/725
HYP10B0750.....	10"/750
HYP10B0800.....	10"/800
HYP10B0850.....	10"/850
HYP10B0900.....	10"/900

12" HIGH TRAVEL SPRINGS

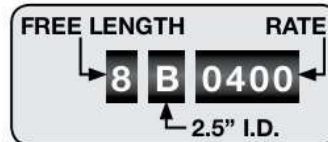
HYP12B085.....	12"/85
HYP12B095.....	12"/95
HYP12B0110.....	12"/110
HYP12B0125.....	12"/125
HYP12B0150.....	12"/150
HYP12B0162.....	12"/162
HYP12B0175.....	12"/175
HYP12B0185.....	12"/185
HYP12B0200.....	12"/200
HYP12B0225.....	12"/225
HYP12B0250.....	12"/250
HYP12B0275.....	12"/275
HYP12B0300.....	12"/300
HYP12B0325.....	12"/325
HYP12B0350.....	12"/350
HYP12B0375.....	12"/375
HYP12B0400.....	12"/400
HYP12B0425.....	12"/425
HYP12B0450.....	12"/450
HYP12B0475.....	12"/475
HYP12B0500.....	12"/500
HYP12B0550.....	12"/550
HYP12B0600.....	12"/600
HYP12B0650.....	12"/650
HYP12B0700.....	12"/700

12" HIGH TRAVEL SPRINGS

HYP12B0750.....	12"/750
HYP12B0800.....	12"/800
HYP12B0850.....	12"/850

14" HIGH TRAVEL SPRINGS

HYP14B085.....	14"/85
HYP14B0100.....	14"/100
HYP14B0110.....	14"/110
HYP14B0125.....	14"/125
HYP14B0138.....	14"/138
HYP14B0150.....	14"/150
HYP14B0160.....	14"/160
HYP14B0175.....	14"/175
HYP14B0185.....	14"/185
HYP14B0200.....	14"/200
HYP14B0225.....	14"/225
HYP14B0250.....	14"/250
HYP14B0275.....	14"/275
HYP14B0300.....	14"/300
HYP14B0325.....	14"/325



Designed for light rate / high travel coil-over applications. UHT designs meet the requirements of soft spring / big bar setups and remain consistent in free length & installed weight. UHT features a larger "body Bulge" over standard OBD designs, allowing additional deflection, rate linearity and resistance to bowing.



HYP14B0350.....	14"/350
HYP14B0375.....	14"/375
HYP14B0400.....	14"/400
HYP14B0450.....	14"/450
HYP14B0500.....	14"/500
HYP14B0600.....	14"/600
HYP14B0650.....	14"/650

16" HIGH TRAVEL SPRINGS

HYP16B0100.....	16"/100
HYP16B0150.....	16"/150
HYP16B0250.....	16"/250
HYP16B0300.....	16"/300
HYP16B0350.....	16"/350
HYP16B0450.....	16"/450
HYP16B0500.....	16"/500
HYP16B0600.....	16"/600

12" ULTRA HIGH TRAVEL

HYP12B0110UHT...	12"/110
HYP12B0125UHT...	12"/125
HYP12B0150UHT...	12"/150
HYP12B0175UHT...	12"/175
HYP12B0200UHT...	12"/200
HYP12B0225UHT...	12"/225
HYP12B0250UHT...	12"/250
HYP12B0275UHT...	12"/275

14" ULTRA HIGH TRAVEL

HYP14B0125UHT....	14"/125
HYP14B0140UHT....	14"/140
HYP14B0150UHT....	14"/150
HYP14B0165UHT....	14"/165
HYP14B0175UHT....	14"/175
HYP14B0185UHT....	14"/185
HYP14B0200UHT....	14"/200
HYP14B0225UHT....	14"/225
HYP14B0250UHT....	14"/250

15" ULTRA HIGH TRAVEL

HYP15B0110UHT....	15"/110
-------------------	---------

16" ULTRA HIGH TRAVEL

HYP16B0110UHT....	16"/110
HYP16B0125UHT....	16"/125
HYP16B0138UHT....	16"/138
HYP16B0150UHT....	16"/150
HYP16B0175UHT....	16"/175
HYP16B0250UHT....	16"/250

COIL SPRING

PPM0220..... 3" 400 lb, Fits 0270, 0200



AIR & FUEL DELIVERY COMPONENTS

AIR FILTER ACCESSORIES



PPM1850-5



PPM1830



PPM1840-200



PPM1840-050



BILLET AIR FILTER STUD
Available in 3 lengths. Tightens filter assembly better without over-tighten and breaking stud. Seals out dirt.

BILLET AIR FILTER KNOB
Black anodized aluminum, knurled top & O-Ring seal.



PPM1850-112



PPM1850-138



PPM1870



PPM64-146

- PPM1850-4 Washable Air Filter 4"x 14" dia
- PPM1850-5 Washable Air Filter 5"x 14" dia
- PPM1850-138 Shielded Breather 1-3/8"
- PPM1850-112 Shielded Breather 1-1/2"
- PPM1830 14" Breather Housing (Top, Bottom, 1/2" Adapter)
- PPM1830BLK 14" Breather Housing (Top, Bottom, 1/2" Adapter) Black
- PPM1830T Breather Housing-Top
- PPM1830T-BK Breather Housing-Top, Black
- PPM1870 Aluminum Carb Cover w/o Gasket
- PPM64-146 Aluminum Carb Cover w/o Ring
- PPM1840-200 2" Air Cleaner Adapter
- PPM1840-100 1" Air Cleaner Adapter
- PPM1840-050 1/2" Air Cleaner Adapter
- PPM1850-990516 K&N Air Filter Oil
- PPM1800 Aluminum Breather Knob 5/16"-18
- PPM1820 Aluminum Breather Knob 1/4"-20
- PPM1880-1 3" Air Filter Stud 5/16"-18 Thread
- PPM1880-2 3-1/2" Air Filter Stud 5/16"-18 Thread
- PPM1880-3 4" Air Filter Stud 5/16"-18 Thread
- LON-52-32750 5/16" thread Alum Air Cleaner Stud Kit

ALUMINUM OIL COOLERS

Deck mount oil coolers.

PPM101680D-10 Small, Double

Pass -10AN Fittings

PPM2930007-10 Double Pass -10AN Fittings

PPM2930007-12 Double Pass -12AN Fittings

PPM2930007-16 Double Pass -16AN Fittings

PPM2930006-12 Single Pass -12AN Fittings

PPM2930006-10 Single Pass -10AN Fittings



Outerwears
Performance Products



- OTW-10-1002BK Air Cleaner, 4" No Top - Black
- OTW-10-1014BK Air Cleaner, 4" with Top - Black
- OTW-10-1004BK Air Cleaner, 5" No Top - Black
- OTW-10-1020BK Air Cleaner, 5" with Top - Black
- OTW-10-1018BK Crankcase, No Top - Black
- OTW-10-1188BK Crankcase, with Top - Black

BILLET CARB SPACERS

Increased horsepower & drivability guaranteed! Tapered stepped ports increase flow and horsepower. 6061-16 Aluminum billet spacer performs better than cast spacers.



PPM1910



PPM1900



PPM1930



PPM1920

- PPM1900 2" PPM Carb Spacer (Ported)
- PPM1910 2" PPM Slanted Carb Spacer
- PPM1920 1" PPM Crate Engine Carb Spacer
- PPM1930 1" PPM Quadra-Jet Carb Spacer
- PPM1900B Stud Kit for Mount 2" Spacer
- PPM1920B Stud Kit for Mount 1" Spacer
- PPM1860 Open Center Carb Gasket
- PPM1861 4-Hole Center Carb Gasket

DUAL INLET CARBURETOR LINE KIT

Holley Dual Feed 4150 Series carburetor line kit features -08AN dual inlets with braided hose, AN fittings with 1/8" NPT fuel pressure port, 7/8"-20 thread fittings.



- PPM941-0356100 Holley Dual Feed 4150

THROTTLE LINKAGE - STOPS



PPM1333



PPM898-32700

PPM1331

- PPM1332 Throttle Linkage Rod (Steel, Economy)
- PPM1333 Throttle Linkage Rod, Quick Disconnect
- LON898-32700 Longacre Throttle Linkage Kit
- PPM1331 4150/4160 Throttle Return Spring Kit
- PPM1334 Carburetor Linkage Bushings
- LON-52-32720 Delux Carb Linkage Kit (Chevy)
- PPM898-6100 Throttle Stop Bracket (4bbl Holley)

FUEL DELIVERY COMPONENTS

DOUBLE ENDED - AN HOSE WRENCH SET



Includes sizes -03AN to -20AN.

PPM0359200.....AN Wrench Set -03 to -20AN

FUEL CELLS

FUS-FC-22BF / FUS-FC-28BF

- Super tough FIA-FT3 certified Enduro® bladder
- Powder coated (black) 20 gauge steel container
- Low profile light-weight aluminum fill plate
- Billet aluminum flush cap
- -06 rollover vent valve and -08AN fuel return
- Dipstick and -10AN pickup with side outlet
- 5 year limited warranty

20 gal-25"x20"x12"Rx16"L



FUS-FC-22BF 22 Gallon Tapered Fuel Cell w/Foam
 FUS-FC-28BF 28 Gallon Tapered Fuel Cell with Foam (23.5" x 20" x 12" x 16")
 PPM28DLM-S..... 22/28 Gal 2" Tapered Fuel Safe Straps
 RCI7032C..... RCI Screw on Fuel Cell Lid
 FUS-SFC240..... Fuel Safe 2.4" Flush Aluminum Cap
 FUS-FB-228..... Fuel Safe Foam for FUS-FC-30B
 FUS-TOC-4X6-28C..... Fuel Safe Top Mount Outlet Conversion Kit (Fill Plate Assembly)
 FUS-FL06..... -06AN Dipstick Economy Fuel Level Indicator, 34" with Knurled Anodized Cap

FUEL CELL & REAR VENTS



PPM911-1741-FCV

PPM911-1741-RV

PPM941-7005

Eliminates the need for hose or breather filter. Rear vent fits 3/8" NPT hole on top of quick change. Fuel cell vent goes on fitting on cell for easy venting. Simple installation.

PPM911-1741-FCV.....-08AN Fuel Cell Vent
 PPM911-1741-FCV-6.....-06AN Fuel Cell Vent (Fits Most ATL Cells)
 PPM911-1741-RV 3/8" NPT Rear End Vent
 PPM941-7005 10 Male to 1-1/16-12 O-Ring Port Adapter
 PPM941-79008-08 Fuel Cell Bulkhead
 PPM941-77006-06 Bulkhead Washer
 PPM941-77008-08 Bulkhead Washer
 PPM941-77010-10 Bulkhead Washer
 PPM941-79908 -08 90° Fuel Cell Bulkhead
 PPM941-79010-10 Fuel Cell Bulkhead
 PPM941-79910 -10 90° Fuel Cell Bulkhead
 PPM941-78010 Bulkhead Nut -10
 PPM941-78008 Bulkhead Nut -08

DRY SUMP TANKS

Peterson's Dirt Late Model tanks include a built in oil filter which keeps the tanks clean of engine debris and helps on deaeration of the engine oil. The "center breather" system allows the air to escape out the bottom of the tank while leaving the oil where it belongs. No more messy breathers and blowing oil! An oil heater bung in the bottom allows the use of a probe style heater for pre heating.



PET08-0911-CJR..... Peterson 3-Gallon Dry Sump Tank (Laydown Filter, Single Return)
 PET08-0913-CJR..... Peterson 4-Gallon Dry Sump Tank (Laydown Filter, Single Return)
 PET08-0975..... Peterson Oil Tank Element
 PRC-25012..... Vertical, 10 Qt., Dry Sump Oil Tank

FUEL PUMPS

ProCam 6-Valve, 130GPH pumps deliver enough fuel for gasoline



308-10300

907-12803

PRC9350

applications up to 1,200 horsepower & sufficient fuel for alcohol applications up to 600 horsepower. Pumps, which are engineered for longevity, are offered in 7-1/2 & 15 PSI models, each fitted with 1/2" NPT inlet and outlet.

PRC9350 ProCam SBC Fuel Pump 15 PSI
 PRC9351 ProCam SBC Fuel Pump 7-1/2 PSI
 PPM907-12803 High Pressure Regulator 4.5-9 PSI
 SWE308-10300 Dual Adjustable Regulator
 SWE305-85839-K Tandem Power Steering with Mechanical Fuel Pump Drive

FUEL FILTERS



Filter logs include element o-ring

Fuel Filter Kit includes (2) straight -10AN push-on fittings, (1) 90° -10AN push-on fitting, fuel filter & 12' of Push-Lok hose.

PPM911-1741-08 8" Inline Fuel Filter
 PPM911-1741-08K..... 8" Fuel Filter & Hose Kit
 PPM911-1741-10 10" Inline Fuel Filter
 PPM911-1741-FC Fuel Filter Bracket, 1.5" Tubing
 PPM911-1741-10K..... 10" Fuel Filter & Hose Kit
 PPM911-1741-10FF Paper Replacement Fuel Filter
 PPM911-1741-10FFS Stainless Steel Repl Filter

ENGINE OIL, HOSES & FITTINGS

RENEGADE RACE OIL

RACERS THAT WIN POUR IT IN!

Renegade Racing Lubricants are specifically designed to lubricate competition engines, which run alcohol or higher octane fuels. "THE OIL OF CHAMPIONS!" Renegade

Racing Lubricants Pro Series® SAE is formulated with ZDDP additive, tough detergent-disperant package, naturally high viscosity index base oils, excellent oxidation, advanced anti-foam system, high performance protection that provides winning results. Not suitable for engines with catalytic converters. Sold as a quart or as a case, cases include 12 quarts.

RENEGADE RACING LUBRICANTS PROVIDE....

- Excellent oxidation and shear stability characteristics
- Outstanding anti-foam system
- "BALANCED ZDDP" additive for strong anti-wear protection
- Exceptional high temp protection from thermal breakdown
- Exceeds the performance requirements of API Service SJ

REN-077-3359	SAE 10W-30 Syn Blend Oil, qt
REN-077-3359CS	SAE 10W-30 Syn Blend Oil, case
REN-177-3359	SAE 20W-50 Mineral Base Oil, qt
REN-177-3359CS	SAE 20W-50 Mineral Base Oil, case
REN-277-3359	SAE 20W-50 Syn Oil
REN-277-3359CS	SAE 20W-50 Syn Oil, case
REN-078-3359	SAE 30 Break-In Oil, qt
REN-078-3359CS	SAE 30 Break-In Oil, case

WIX RACING OIL FILTERS



FILTER NUMBER	THREAD SIZE	FILTER HEIGHT	FILTER OD
WIX51061R	13/16"-16	5.17"	3.6"
WIX51222R	1-1/2"-12	6.21"	4.6"
WIX51268R	1-1/8"-16	5.21"	3.6"

POWER STEERING HOSE AND FITTINGS



HIGH PRESSURE FITTINGS

PPM24706N-006	-06 AN Female - Straight (each)
PPM24706N-456	-06 AN Female - 45° (each)
PPM24706N-906	-06 AN Female - 90° (each)
PPM943-HP-06	-06 Power Steering Hose (per ft) (each)

POWER STEERING -AN to INVERTED FLARE ADAPTERS

PPM941-440662	-06 Male to 5/8"-18 Inverted Flare (each)
PPM941-440650	-06 Male to 1/2"-20 Inverted Flare (each)

PUSH-LOK FITTINGS & HOSE

PUSH-LOK HOSE

PPM943-332-06 -06 (per foot)
PPM943-332-08 -08
PPM943-332-10 -10



STRAIGHT PUSH-ON HOSE FITTINGS

PPM943-10006 -06
PPM943-10008 -08
PPM943-10010 -10



STRAIGHT PUSH-ON HOSE BARB TO MALE -AN

PPM943-30414 -04 male to 1/4" hose
PPM943-30638 -06 male to 3/8" hose
PPM943-30812 -08 male to 1/2" hose
PPM943-31058 -10 male to 5/8" hose
PPM943-31234 -12 male to 3/4" hose

45° PUSH-ON HOSE FITTINGS

PPM943-14506 -06 45°
PPM943-14508 -08 45°
PPM943-14510 -10 45°



90° PUSH-ON HOSE FITTINGS

PPM943-19006 -06 90°
PPM943-19008 -08 90°
PPM943-19010 -10 90°



PPM943-11508 -08 150°
--------------	----------------

BRAIDED BRAKE & CLUTCH LINES



STRAIGHT FEMALE ENDS

fitting - length	PPM431-024-4 -04 x 24"	
PPM431-018-3 -03 x 18"	PPM431-030-4 -04 x 30"
PPM431-024-3 -03 x 24"	PPM431-036-4 -04 x 36"
PPM431-036-3 -03 x 36"	PPM431-042-4 -04 x 42"
PPM431-048-3 -03 x 48"	PPM431-048-4 -04 x 48"
PPM431-018-4 -04 x 18"	PPM431-060-4 -04 x 60"

BRAIDED BRAKE LINES WITH FEMALE STRAIGHT - 90° ENDS

PPM431-918-3 -03AN, 18"	PPM431-918-4 -04AN, 18"
PPM431-924-3 -03AN, 24"	PPM431-924-4 -04AN, 24"
PPM431-936-3 -03AN, 36"	PPM431-936-4 -04AN, 36"

BRAIDED CLUTCH LINE KIT

Includes a 36" -03AN braided line with 3/8"-24 90° & 1/8" NPT ends. Also includes a 90° hard line with 3/8"-24 on both ends.

PPM431-00112136 Braided Clutch Line Kit
-----------------	-------------------------------

HARD LINES - PARTS (3/16" LINE W/3/8"-24 ENDS)

PPM433-308 8"	PPM433-340 40"
PPM433-312 12"	PPM433-351 51"
PPM433-320 20"	PPM433-360 60"
PPM433-330 30"		
PPM433-8040 25' Steel Braided Brake Line (3/16")		
PPM433-8041 3/8"-24x3/16" Inverted Flare Nut		

HOSE & FITTINGS

STAINLESS STEEL BRAIDED HOSE

PPM941-408-0-08 (per foot)
PPM941-410-0-10
PPM941-412-0-12
PPM941-416-0-16



ALUMINUM STRAIGHT -AN

PPM941-1003-08
PPM941-1004-10
PPM941-1005-12
PPM941-1006-16



ALUMINUM 45° -AN

PPM941-1010-08 45°
PPM941-1011-10 45°
PPM941-1012-12 45°
PPM941-1013-16 45°



ALUMINUM 90° -AN

PPM941-1017-08 90°
PPM941-1018-10 90°
PPM941-1019-12 90°
PPM941-1020-16 90°



ALUMINUM 120° -AN

PPM941-1023-08 120°
PPM941-1024-10 120°
PPM941-1025-12 120°
PPM941-1026-16 120°



UNION FLARE

PPM941-8001-08
PPM941-8002-08 to -10 Reducer
PPM941-8003-10
PPM941-8004-12
PPM941-8005-10 to -12 Reducer



STRAIGHT BARB TO PIPE ADAPTER

PPM943-20838	-08AN to 3/8" NPT
PPM943-21038	-10AN to 1/2" NPT



STRAIGHT SWIVEL UNIONS

PPM941-1093-08AN Female
PPM941-1094-10AN Female
PPM941-1095-12AN Female



90° FEMALE -AN TO MALE FLARE

PPM943-498104-08 female to male flare 90°
PPM943-498105-10 female to male flare 90°
PPM943-498106-12 female to male flare 90°

-AN to NPT FITTINGS

PPM941-7002-08 to 1/4"
PPM941-7001-08 to 3/8"
PPM941-7006-08 to 1/2"
PPM941-7004-10 to 1/4"
PPM941-7003-10 to 3/8"
PPM941-7007-10 to 1/2"
PPM941-7008-12 to 1/2"
PPM941-7009-12 to 3/4"
PPM941-7010-12 to 1"
PPM941-7901-8 to 3/8" - 90°
PPM941-7903-10 to 3/8" - 90°
PPM941-7906-8 to 1/2" - 90°
PPM941-7907-10 to 1/2" - 90°
PPM941-7908-12 to 1/2" - 90°



PPM941-7005-10 Male to 1-1/16"-12 O-Ring Port
PPM941-4912061/8" to 1/2" Pipe Reducer

PPM941-03543041 1/2" Aluminum NPT Plug



-AN REDUCER FITTINGS

PPM941-960806-8 to -6
PPM941-961008-10 to -8
PPM941-951210-12 to -10

-AN EXPANDER FITTINGS

PPM941-950810-8 to -10
PPM941-951012-10 to -12

O-RING PORT ADAPTERS

PPM941-7014-08 to 3/4"-16	PPM941-7018-12 to -10
PPM941-7015-10 to 3/4"-16	PPM941-7019-16 to -12
PPM941-7016-10 to -10	PPM941-7011-16 to -16
PPM941-7017-08 to -10	PPM941-7012-20 to -20



GAUGE ADAPTER FITTINGS - STEEL

PPM64125S-04 AN to 1/8" NPT Female
PPM64125S-90-04 AN to 1/8" NPT Female 90°
PPM941-0132409-08AN Female to -04AN Male

-AN FLARE CAPS

PPM941-60829-08
PPM941-61029-10
PPM941-61229-12



COOLING

ALUMINUM RACING RADIATORS

19" tall, 28" wide, with (2) 1" tubes and 14 fins per inch. Standard 1-1/2" inlets and 1-3/4" outlets have beaded hose fittings.



- PPM2111010 GM Standard
- PPM2111101 GM Double Pass
- PPM2111101-16 GM Double Pass -16AN Fitting
- PPM2111118 GM Double Pass -20AN Fitting
- PPM2111102 GM Triple Pass
- PPM2111102-16 GM Triple Pass, -16AN Fitting
- PPM2111102-20 GM Triple Pass, -20AN Fitting
- PPM2111103 Ford Standard
- PPM2111104 Ford Double Pass, Oil Cooler
- PPM2111105 Ford Double Pass
- PPM2111105-16 Ford Double Pass, -16AN Fitting
- PPM2111106 Ford Triple Pass
- PPM2111106-16 Ford Triple Pass, -16AN Fitting
- PPM2111106-20 Ford Triple Pass, -20AN Fitting
- PPM2619D2 GM Double Pass 26"x19"
- PPM2619D2-16 GM Double Pass 26"x19" -16AN
- PPM2111101-22 GM 22" Double Pass, Modified
- PPM2111101-2216 GM 22" Double Pass, -16AN

WATER NECK SPACERS



PPM2613529



PPM0618



PPM0610



PPM0620

- PPM0600 Water Neck Spacer
- PPM0610 Water Neck Spacer 2-1/2" Holes
- PPM0611 Thermostat Housing O-ring
- PPM0618 Water Neck -16AN
- PPM0619 Water Neck -20AN
- PPM0620 Swivel Water Neck (90° SBC)
- PPM2613522 Radiator Cap 22-24 psi
- PPM2613529 Radiator Cap 29-31 psi
- PPM941-7012 -20AN Male to 1-5/8" -20AN O-Ring Port Adapter
- PPM626-18583440 Water Outlet Restrictor 3-Pc Kit

WATER PSI KITS

- QCP-61-716 Quicklite Water Pressure Kit with Gauge, Light & Sensor
- QCP-61-713 Water Pressure Light Kit with Wiring

MECHANICAL FANS

- PPM626-577-15 15", 32° Pitch
- PPM626-577-18 18", 32° Pitch



ALUMINUM WATER PUMPS



Long



Short

Heavy-Duty 3/4" bearing turned down to 5/8" shaft. 1-3/4" lower outlet. Machined fan hub with dual bolt pattern. Cam stop includes bolts & gaskets.

- PPM626-5580 GM Short Aluminum Water Pump
- PPM626-5590 GM Long Aluminum Water Pump

BILLET WATER PUMP PULLEY COMBOS

- PPM626-5410 1:1 Ratio, SBC Short Pump & Belts
- PPM626-5460 1:1 Ratio, SBC Short Pump & Belts - 25% Reduction



BILLET ALUMINUM FAN SPACERS

- Billet aluminum fan spacers include bolts.
- PPM626-730-100 Fan Spacer 1"
- PPM626-730-150 Fan Spacer 1.5"
- PPM626-730-200 Fan Spacer 2" Long
- PPM626-730-250 Fan Spacer 2.5" Long
- PPM626-730-300 Fan Spacer 3" Long



RADIATOR SCREENS

Screens are lightweight, strong and mount directly to front of the radiator to protect it from dirt and debris.



- OTW11-2334-12 Modified Radiator Screen
- OTW11-2652-12 20"x 30" Screen (Bloomquist)
- OTW11-2793-12 19"x 24" Screen (Rocket)
- OTW11-2794-12 17"x 25" Screen (Mastersbilt)
- OTW11-2945-12 24.75"x 18" Screen (Rocket, Club 29)

SHAKER SCREEN / RADIATOR MOUNT

- PPM2111121 Shaker Screen/Upper Mount Kit (Alum)
- PPM2111120 Bottom Radiator Mount (each)
- PPM2111124 Radiator Mounting Kit (top & bottom mnts, rods, bolts, washers)
- PPM2111121S Radiator Mounting Springs
- PPM626-30160 Radiator Shaker Screen Kit, 18" T x 24" W, 1/2" x 32" Rod
- PPM2111123 Radiator Top Mount



QCP-60-032 Elec. Fan Mounting Kit

IGNITION & ELECTRICAL

DISTRIBUTORS & COMPONENTS



- MSD85551 MSD Distributor (Magnetic Pickup)
- MSD85561 MSD Distributor (Slip Collar, Magnetic Pickup)
- PPM828-9126 Heavy Duty Distributor Clamp with Stud, Nut, and Washer
- MSD8467 MSD Racing Rotor
- MSD8433 MSD Chevy HEI Distributor Cap
- MSD84661 Magnetic Pickup Assembly
- QCP50-2006 MSD Digital Adapter Harness
- QCP50-2007 6-Pin Deutsch to Weatherstrip Adapter

MSD IGNITION BOXES & ACCESSORIES



- MSD6632 MSD 6HVC-L with SoftTouch Rev Control
- MSD6430 MSD 6ALN Ignition Control
- MSD6425 MSD 6AL Ignition Control
- MSD7222 MSD 7 AL-2 Plus
- QCP-50-442 MSD Quick Release Box Plate
- MSD8748 MSD RPM Module Kit 8000-8800
- MSD8747 MSD RPM Module Kit 7000-7800
- MSD8250 MSD 6HVC Coil (6HVC-L)
- MSD8252 MSD Blaster HVC Coil (6ALN/6AL)
- MSD8251 MSD Pro Power HVC Coil (7AL-2+)
- MSD8222 MSD Blaster High Vibration Coil
- MSD8223 MSD 5/6-Series Vibration Mounts
- MSD8213 MSD Coil Bracket (2.25 dia. Coils)

HEI PLUG WIRES

8mm plug wire sets feature 90° HEI ends and are numbered for each cylinder.



- PPM846-0355 ..Sleeved 8mm Wires (SBC, 90° HEI Ends, Blue)
- PPM846-0350 8mm Plug Wires (SBC, 90° HEI Ends, Gray)
- PPM865-03500 24" 8mm HEI Plug Coil Wire

QUICKCAR IGNITION ACCESSORIES



- QCP-50-200 5' Racewire Harness
- QCP-50-2021 Dual Ignition Harness
- QCP-50-522 Toggle switch with Boot Cover
- QCP-50-430 Heavy Duty Solenoid
- QCP-55-010 Master Disconnect Switch (Blk)
- QCP-55-003 Disconnect Switch with Key
- QCP-50-510 Push to Start Button
- QCP-57-009 4-Gauge RaceWire Battery Cable Kit
- QCP-57-010 2-Gauge RaceWire Battery Cable Kit
- QCP-57-703 Charging Post (pair)
- QCP-57-520 .. Battery Cable End Loops, Pair 5/16" Hole 4 AWG
- QCP-57-530 Battery Cable End Loops, Pair 3/8" Hole 4 AWG
- QCP-57-540 .. Battery Cable End Loops, Pair 5/16" Hole 2 AWG
- QCP-57-550 Battery Cable End Loops, Pair 3/8" Hole 2 AWG
- QCP-57-723 Remote Battery Charge Kit
- QCP-50-513 6 AWG Connector Holster
- QCP-50-514 6 AWG Connector Pin
- QCP-50-362 6-Pin Connector, Male & Female
- QCP-50-380 Weather Pack Kit (230-Piece Kit)
- QCP-50-322 2-Pin Weather Pack Connector Kit
- QCP-50-332 3-Pin Weather Pack Connector Kit
- QCP-50-342 4-Pin Weather Pack Connector Kit
- QCP-50-401 Momentary/Off/Momentary Toggle
- QCP-50-420 On/On Crossover Toggle Switch
- QCP-50-434 Remote Start Button
- QCP-50-399 GM Weatherpack Pin Removal Tool
- QCP-64-020 Impact Crimper
- QCP-50-7222 6 pin Weatherpack to MSD Pigtail

BOLT-ON BATTERY BOX

Steel construction includes angle & baits, sold less mounting clamps, and mounting holes. Mounts with ballast brackets. Easily move battery for balancing weight of car.



- PPM57-100 Bolt-On Battery Box

GAUGES

QUICKCAR GAUGE PANEL ASSEMBLIES & GAUGES



61-6712



61-6721



61-6701



QuickCar Gauge Panel Assemblies include sending units (where applicable). Gauge Pressure Tubing is not included & must be purchased separately. Fuel Pressure Isolator is also highly recommended. Panels are 4.5" tall & 5" (2-gauge), 10-1/2" (3-gauge) or 13-5/8" (4-gauge) wide. Warning lights are included with assemblies. Some assembly may be required.

- QCP-61-6701..... 2-Gauge Panel, Oil & Water Pres
- QCP-61-6712.....3-Gauge Panel, Oil Pres, Water Temp. & Fuel Pres
- QCP-61-6721..... 4-Gauges, Oil Pres, Water Temp, Oil Temp. & Fuel Pres
- QCP-61-6721P 4 Gauges, Pre-Wired with Plug, Oil Pres., Water Temp., Oil Temp. & Fuel Pres
- QCP-611-6000..... Fuel Pres Gauge
- QCP-611-6003..... Oil Pres Gauge
- QCP-611-6009..... Oil Temp. Gauge
- QCP-611-6006..... Water Temp. Gauge
- QCP-61-709..... Gauge Panel Warning Light (Green)5
- QCP-61-701..... Gauge Panel Warning Light (Red)
- QCP-61-702..... Gauge Panel Warning Light (Blue)
- QCP-61-704..... Gauge Panel Warning Light (Yellow)
- PPM889-1345..... Oil Pres Sending Unit (20 psi)
- PPM889-1350..... Water Temp Sending Unit (230°)
- PPM889-1355..... Oil Temp Sending Unit (275°)
- PPM889-3021..... Fuel Pres Sending Unit (4 psi)



QCP-67-3012.....3 Gauge Digital Panel



QCP-67-4021.....4 Gauge Digital Panel



QCP-67-4021.....Digital Tachometer

QUICKCAR TACHOMETERS



611-100



611-6002



611-7010

- QCP-611-100.....LCD Digital Tech (Black Face)
- QCP-611-098.....Harness for QCP-611-100
- QCP-611-6001..... 10k 5" with Memory & Recall
- QCP-611-6002..... 10k 3-3/8" with Remote Recall
- QCP-611-7010.....Extreme LCD Digital Tachometer

QUICKCAR CHASSIS WIRING HARNESS KITS



Chassis Wiring Harness Kit includes a 61-4-gauge panel assembly with oil pressure, water temperature, oil temperature & fuel pressure 50-025 dash mount switch panel with 3 toggles with warning lights and one momentary push button, 50-203 Weatherpack wiring harness with single ignition box and switch panel.

- QCP-50-204PK Includes 50-203P, 50-825P, 61-6721P
- QCP-50-203PK Incl 50-203P, 50-820P, 61-6721P
- QCP-50-203PUniversal Wiring Harness

QUICKCAR SWITCH PANELS



50-802



50-825



50-822



50-820

- QCP-50-820..... Starter Button, Ignition, Accessory Switch MIL-SPEC
- QCP-50-802..... Starter Button & Ignition
- QCP-50-822..... Starter Button, Ignition & Accessory Switch with Two Lights
- QCP-50-825..... Starter Button, Ignition & Two Accessory Switches with Three Lights
- QCP-50-820P Starter Button, Ignition, Accessory Switch MIL-SPEC*
- QCP-50-825P Starter Button, Ignition & Two Accessory Switches with Three Lights*
- QCP-50-720..... Extreme Ignition Control Panel
- QCP-50-7711..... Extreme Dual Ignition Panel (3 acc)

* 50-820P, 50-825P panels are pre-wired with plug far wiring harnesses.

QUICKCAR EXTREME GAUGES



61-7021



QuickCar Extreme Gauge Panel Assemblies feature

LED lighting on white gauge faces with black gauge panel.

- QCP-61-7001..... 2-Gauge Extreme Panel, Oil Pressure & Water Temperature
- QCP-61-7011..... 3-Gauge Extreme Panel, Oil Pressure, Oil Temperature & Water Temp
- QCP-61-7012..... 3-Gauge Extreme Panel, Oil Pressure, Water Temperature & Fuel Pressure
- QCP-61-7021 4-Gauge Extreme Panel, Oil & Fuel Pressure, Oil & Water Temperature
- QCP-611-7000..... Extreme Fuel Pressure Gauge
- QCP-611-7003..... Extreme Oil Pressure Gauge
- QCP-611-7006..... Extreme Water Temperature Gauge
- QCP-611-7009..... Extreme Oil Temperature Gauge
- QCP-611-7007..... Extreme Volt Meter Gauge

SAFETY COMPONENTS & GAUGES

QUICKCAR REDLINE GAUGES



QCP-63-3011

QCP-63-4021

QuickCar Redline Gauge Panels are designed for competition and are lightweight. Panels are completely wired with senders.



- QCP-63-3011.....3 Gauge Panel, Oil Pressure, Water Temperature, Oil Temperature
- QCP-63-3012.....3 Gauge Panel, Oil Pressure, Water Temperature, Fuel Pressure
- QCP-63-4021.....4 Gauge Panel, Oil Pressure, Fuel Pressure, Oil Temperature, Water Temperature

QUICKCAR GAUGE ACCESSORIES



- PPM889-1345.....Oil Pressure Sending Unit 20 psi
- PPM889-1350.....Water Temp Sending Unit 230°
- PPM889-1355.....Oil Temp Sending Unit 275°
- PPM889-3021.....Fuel Pressure Sending Unit 4 psi, 1/8" npt
- QCP-61-699.....LED Bulb - White (each)
- QCP-61-691.....LED Bulbs - Red (pair)
- QCP-61-692.....LED Bulbs - Blue (pair)
- QCP-61-693.....LED Bulbs - Amber (pair)
- QCP-61-694.....LED Bulbs - Green (pair)
- QCP-61-720.....Pressure Switch Brass 'T' (1/8" npt)
- QCP-61-721.....Female Brass 'T' (1/8" npt)
- QCP-63-220.....Electric Temperature sending unit
- QCP-63-225.....2 Wire Electric Temperature sender
- QCP-63-230.....Electric Pressure Sensor (0-100psi)
- QCP-63-240.....Electric Pressure Sensor (0-15psi)

NITRO BEE RADIO

- One Way Race Receiver
- Programmable default channel
- 440.000-469-987 mhz
- Includes earbuds and holster
- AAA batter NOT included
- Button lock to prevent accidental changes



PPM954-NB1000.....Nitro Bee Radio

QUICKCAR DISHED STEERING WHEELS



- QCP68-00115" Alum Steering Wheel
- QCP68-00217" Alum Steering Wheel



HARNESSES

LATCH & LINK 5-POINT INDIVIDUAL SHOULDER 2" PULL DOWN

USD22031..... Latch & Link 5-Point - Harness Black

5-POINT INDIVIDUAL SHOULDER SEAT BELTS - HANS READY

USD22031H.....Seat Belts - Black (Hans Ready)



HALO SEATS

ULTRA-SHIELD

VS HALO SEATS

NEWLY DESIGNED 2019 Model, Head Support assembly bolts to shoulder assembly, still mounts in car the same way as before. High Density, Closed Cell, Impact Absorbing foam in Head and Halo



- USD-VS1520.....15" Add "T" to
- USD-VS1620.....16" the end of
- USD-VS1720.....17" the part # for
- USD-VS1820.....18" 1" taller back



EFC-ECONOMY FULL CONTAINMENT SEATS

This seat is designed to be an economical choice for racers needing a well-built seat at affordable prices. New 2-piece design make for a smaller shipping package and easier install into tight roll cages.

- USD-EF24200.....14"
- USD-EF25200.....15"
- USD-EF26200.....16"
- USD-EF27200.....17"
- USD-EF28200.....18"

HALO FULL CONTAINMENT SEATS

Constructed from .100" 5052 grade aluminum, with 20° layback. Features C-channel stiffener around torso & reinforced Halo & shoulders. 15" deep bottom, 25" shoulder belt height, 18" right & 17" left rib height. High density, closed cell, impact absorbing foam in head & halos. Includes full black cover.



- USD164200.....14" VS HALO Full Cont
- USD165200.....15" VS HALO Full Cont
- USD166200.....16" VS HALO Full Containment
- USD167200.....17" VS HALO Full Containment
- USD168200.....18" VS HALO Full Containment

SUPPORTS & NETS



HEAD SUPPORTS, LEG SUPPORTS & ROLLAGE NETS

- USD91060.....Leg Support, Right Side, Black Cover
- USD91070.....Leg Support, Left Side, Black Cover
- USD39221L.....Rollcage Net Left Side, Sprint Car Type

BRAKE COMPONENTS

WILWOOD CALIPERS

FORGED SUPERLITE FSLI/ST CALIPER

Lightweight, starting at 4.40 lbs. Redesigned with internal fluid ports that eliminate the external fluid crossover tubes. Available in differential bore or standard symmetrical bore configurations. Fits rotors from 11.75" to 13.00" in diameter, and widths from .81" to 1.25". Long lasting black anodized finish.



BILLET NARROW MOUNT DYNALITE CALIPER

Four corner bleed screws allow the caliper to be mounted in any front, rear, right, or left position. Only weighs 4.10 lbs. Stainless steel pistons to resist corrosion & retard the transfer of heat. Black anodized.



WIL120-11134	Forged Superlite FSLI/ST Caliper 1.75/1.75 Piston .810 Rotor (4)
WIL120-11136	Forged Superlite FSLI/ST Caliper 1.75/1.75 Piston 1.25 Rotor (4)
WIL120-11128	Forged Superlite FSLI/ST Caliper 1.38/1.38 Piston .810 Rotor (4)
WIL120-11130	Forged Superlite FSLI/ST Caliper 1.38/1.38 Piston 1.25 Rotor (4)
WIL120-11573	Billet Narrow Mount Dynalite Caliper 1.75/1.75 Piston 1.25 Rotor (4)
WIL120-11576	Billet Narrow Mount Dynalite Caliper 1.38/1.38 Piston 1.25 Rotor (4)
WIL120-11572	Billet Narrow Mount Dynalite Caliper 1.75/1.75 Piston .810 Rotor (4)
WIL120-11578	Billet Narrow Mount Dynalite Caliper 1.38/1.38 Piston .810 Rotor (4)

BRAKE ROTORS



2052676810

2052676S

2052676D

PPM205-2676	Solid Steel Rotor (11.75 OD 1.25 Width 9.0 lbs.)
PPM205-2676810	Steel Rotor (11.75 OD x .810 Width 8.0 lbs.)
PPM205-2676D	Drilled Steel Rotor (11.75 OD x 1.25 Width 8.0 lbs.)
PPM205-2676S	Scalloped Steel Rotor (11.75 OD x 1.25 Width 5.8 lbs.)
PPM205-2676S810	Scalloped Steel Rotor (11.75 OD x .810 Width 5.4 lbs.)
PPM205-2676D810	Straight Vane, Drilled Steel Rotor (11.75 OD x .810 Width 5.4 lbs.)

SUPER ALLOY 32 VANE BRAKE ROTORS

Super Alloy rotors provide the lowest rotating and unsprung weight, without degradation, shrinkage and warping. A durable lightweight option in Dirt Late Model & Modified racing where sustained temperatures remain in the low to moderate range.



Part Number	Diameter	Width	Bolt Circle	Style
WIL160-12041 11.75 1.25 8 x 7.00 Drilled
WIL160-13373 11.75 1.25 8 x 7.00 Slotted

MASTER CYLINDERS & THROTTLE & BRAKE PEDALS



PPM523	Throttle Pedal
PPM526A	Brake Bias Adjuster, 26" Crank Style
PPM526AL	Brake Bias Adjuster, 34" Crank Style
WIL340-4990	Remote Brake Bias Adjuster
WIL340-11299	Brake Pedal Assembly Reverse Mount, 6.25:1, Triple Master Cylinder
WIL340-3950	Brake Pedal Assembly Forward Mount, 6.25:1 Triple Master Cylinder
WIL340-13832	Brake Pedal Assembly Forward Mount, 7:1 Dual Mount Master Cylinder
WIL340-13834	Brake Pedal Assembly Forward Mount, 7:1 Single Mount Master Cylinder
WIL260-1304	Compact Master Cylinder, 3/4" Bore with Integral Reservoir
WIL260-6764	Master Cyl, 3/4" Bore with Reservoir
WIL260-6765	Master Cyl, 7/8" Bore with Reservoir
WIL260-6766	Master Cyl, 1" Bore with Reservoir
AFC-40292	Throttle Pedal

BRAKE COMPONENTS & STEERING

BRAKE PADS

WILWOOD POLYMATRIX PADS

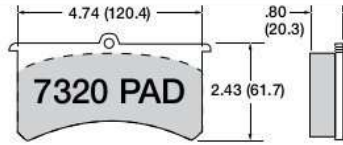
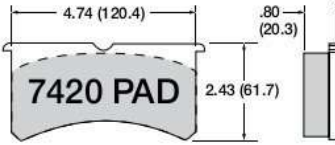
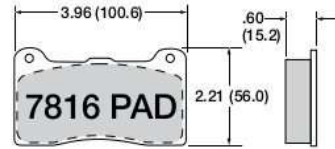
High friction pad with aggressive response. Immediate low temperature response and low wear rate. For severe duty racing on oval track and road courses.



CALL US ABOUT BEDDED PADS

PAD COMPOUND REFERENCE

Hawk	PFC	Wilwood
DTC-30.....	PFC-97	Poly-B
DTC-30.....	PFC-93	-
DTC-70.....	PFC-01	Poly-A
DTC-05.....	PFC-83	-
DTC-05.....	-	Poly-E



- WIL15A-5938K.....A Compound Superlite 7420 Plate
- WIL15B-5939K.....B Compound Superlite 7420 Plate
- WIL15E-6084K.....E Compound Superlite 7420 Plate
- WIL150-2392K.....GATOR Pads Superlite 7320 Plate
- WIL15B-3992K.....B Compound Superlite 7320 Plate
- WIL15E-6100K.....E Compound Superlite 7320 Plate
- WIL15B-7264K.....B Comp Dynalite NDP 7816 Plate
- WIL15E-7266K.....E Comp Dynalite NDP 7816 Plate
- WIL150-12245K.....Black Compound, 7420 Plate
- WIL150-2392K.....Black Compound, 7320 Plate
- WIL15H-10645K.....Poly 7816H Plate (Super Alloy)
- WIL15H-8114K.....Poly 7420H Plate (Super Alloy)
- PPM120-0125.....Brake Pad Spacer (SL)
1/8" Thick Aluminum



TANDEM POWER STEERING WITH MECHANICAL DRIVE

Power steering pump/mechanical fuel pump drive combination is designed for Bert/Brinn style bellhousing and flywheel. It allows any small block chevy mechanical fuel pump to be driven by a cam lobe located on the back of the power steering pump. The power steering pump comes complete with a 33 tooth HTD style pulley with guides. Fuel pump not included.



SWE305-85839-K..... Tandem Power Steering Kit

COMBINATION PUMP BELLHOUSING MOUNT

Assembly includes a 33-tooth pulley Sweet power steering pump with fuel pump drive, Brinn style bellhousing mount for combination pump SWE305-85840, heat resistant phenolic spacer, and Sweet Waterman fuel pump with 7075 housing that shortens the mounting distance 1-1/2". Must use a regulator at fuel log.



SWE305-85841-k..... Pump Bellhousing Mount

BRAKE COMPONENTS



PPMCALFIT3-90-03AN Flare to 1/8"NPT
90° Caliper Fitting

PPM444013.....-03AN Flare to I.F. Female/
1/8"NPT Caliper Fitting (4/pack)

PPMCALFIT4-90-04AN Flare to 1/8"NPT 90° Caliper Fitting

PPM444014..... -04AN Flare to I.F. Female/1/8"NPT Fitting 4-pk

PPMCALFIT4..... -04AN Flare to 1/8"NPT Caliper Fitting

PPMCALFIT3..... -03AN Flare to 1/8"NPT Caliper Fitting

PPM437-2150..... Brake Line Clip (for PPM444014) 4-pk

WIL190-5975..... Billet SL6/FSL4 Fluid Tube, 1.25" Rotor 4 pk

WIL220-0627 Universal Brake Bleeder Screws, 1/8-27 NPT, 4-pk

WIL230-7451 Caliper Bridge Bolt, 1.25 Rotor

WIL130-2427 O-Ring Kit, Superlite 1.88/1.75
FSL4/ST, Set of 4

WIL130-2655 O-Ring Kit, Superlite 1.75 FSL4/ST, 4pk

WIL130-2658 O-Ring Kit, Superlite 1.38 FSL4/ST, 4pk

WIL330-13945..... Bellows Gasket, HY Master Cyl Lid

WIL260-8419.... Brake Proportioning Valve with Knob Adjustment

WIL300-5922..... Wear Plate, Superlite 6/FSL Caliper, RH

WIL300-5923..... Wear Plate, Superlite 6/FSL Caliper, LH

WIL300-6588..... Caliper Spacer Kit - NDL, NDP, FNDL

WIL300-6589.... Caliper Spacer Kit - NDL, NDP, FNDL .810 Rotor

WIL0570..... Wilwood 570 Brake Fluid - 1 Pint

WIL290-6209..... EXP Super Hi-Temp 600 Brake Fluid

PPMEBS Electric Brake Shut-Off Valve

PPM-B42F2 Manual Brake Shut-Off Valve

HEAD MOUNT COMBINATION PUMP ASSEMBLY

Includes Sweet power steering pump with 33-tooth HTD pulley & Waterman fuel pump. Fuel pump can be used with both alcohol & gasoline. Includes an aluminum head mount for the right side of a SB-Chevy. 800mm HTD belt is 20mm long. Dual adjustable fuel regulator allows you to adjust both idle pressure and high speed pressure for better throttle response.



SWE305-85890-k Head Mount Pump Assembly

ACCESSORIES & SERVICES



Shocks



Springs



Accessories



Shock Sales, Revalving, and Repair
 Roehrig Shock Dyno
 Spring Smasher Services on Stacked Springs and Bump Stops
 Computerized Spring Testing on Roehrig dyno
 Factory Authorized Shock Services










Shock Vise with optional stand

PPM7891-101..... Shock Vise
 PPM7891-102..... Stand



Shock Pin
 Two holes for different size mounts

PPM2700 Shock Pin 1-5/8" Shaft
 PPM2720 Safety Cotter Pin



These V-Jaws are a must for any shock builder. Holds the shock shaft horizontally or vertically up to 16mm/.625" diameter. Spring loaded so they will stay in the vise when not in use.

RE-01712-02

RACE DAY GOTTA HAVES

- PPM911-500-B 5 Gal jug, blk
- PPM911-500-W..... 5 Gal jug, wht
- PPM911-500-R 5 Gal jug, red
- PPM911-5225fuel jug nozzle
- PPM911-818-Rfunne
- PPM56-2000Bead Breaker



LONGACRE ACCESSORIES

- LON52-11152 Late Model Car Cover
- LON52-78272 Caster/Camber gauge
- LON52-50840 Stagger Gauge
- rLON52-52001..... 3.5" Tire Gauge
- LON52-79005Bump Steer Gauge
- LON52-68528 12" Lug Nut Socket
- LON52-22162Stop Watch
- LON52-79121 Hub Mount Stand Offs
- LON52-78405 W5 Spindle Adapter
- LON52-79505 Deluxe Toe Plates

QUICKCAR ACCESSORIES

- QCP64-704 Alum Toe Plates
- QCP56-022 20lb Glow in the dark
Tire Gauge
- QCP56-242 40lb Glow in the dark
Inflator Gauge

TIRE GROOVING AND SIPERING

Stay competitive by grooving your racing tires with speed and ease.



- VAN-GV1000Tire Groover
- VAN-V100 Tire Groover (shown)
- VAN-S100..... Tire Siper

Quickly adjust tread on the fly to handle just about any track condition



TIRE GROOVING BLADES (12 EA)

- GV1000 or V100
- VAN-VF033/32" Flat
- VAN-VF041/8" Flat

GV1000 Only

- | | |
|----------------------------|-----------------------------|
| VAN-GFD03 3/32" Flat | VAN-GRD02 1/16" Round |
| VAN-GFD04 1/8" Flat | VAN-GRD03 3/32" Round |
| VAN-GFD05 5/32" Flat | VAN-GRD04 1/8" Round |
| VAN-GFD06 3/16" Flat | VAN-GRD05 5/32" Round |
| VAN-GFD08 1/4" Flat | VAN-GRD06 3/16" Round |
| | VAN-GRD08 1/4" Round |



GAFFER'S TAPE



2" WIDE X 165'

- | | |
|-------------------|-----------------|
| 3006DF.....White | 3002DF.....Blue |
| 3004DF.....Black | 3001DF.....Red |
| 3003DF.....Yellow | |

ENGINE MOUNTING PLATES

ENGINE PLATES AND MOUNTS



1/4" thick aluminum is black powder coated. Waterjet cut for smooth edges & precise holes. Adjustable mounting holes.

FRONT MOTOR MOUNTS

- PPM1350 (Chevy) Aluminum (ea)
- PPM1351 (Chevy) 1" & 2" Setback Aluminum (pr)
- PPM1352 (Ford) 2 Slots Steel (pr)
- PPM1353 (Chevy) Zinc Plated Steel (ea)
- PPM1354 (Chevy) 1" Offset Zinc Plated Steel (pr)
- PPM1356 (Chevy) 1" & 2" Setback Black Oxide Steel (pr)
- PPM1357 (Crate 525) LS Steel (+hardware, pr)

PPM12500A-EM 1/2" Engine Mount Spacer

ADJUSTABLE ENGINE PLATES

- PPM1300 (1-1/8" offset) (Chevy)
- PPM1310 (5/8 offset) GRT
- PPM1310SO (Ford or Chevy) Pre '05 Mastersbilt
- PPM1310SN (Ford or Chevy) Mastersbilt
- PPM1315 (Ford or Chevy) GRT 2013
- PPM1316 Longhorn Ford/Chevy
- PPM1318N Rocket Ford/Chevy (2013-Up)
- PPM1318 (Ford or Chevy) Rocket
- PPM1320 (5/8 offset) (Ford or Chevy)
- PPM1335 (Ford or Chevy) 07 & UP Warrior
- PPM1330W (Ford or Chevy) Pre '06 Warrior



PPM12500A-EM



PPM1350



PPM1351



PPM1352



PPM1353



PPM1310
Fits GRT



PPM1316
Longhorn



PPM1310SO
Fits Masterbilt Pre-2005



PPM1330W
Fits Warrior Pre-2006



PPM1318N
Rocket

XS POWER BATTERIES



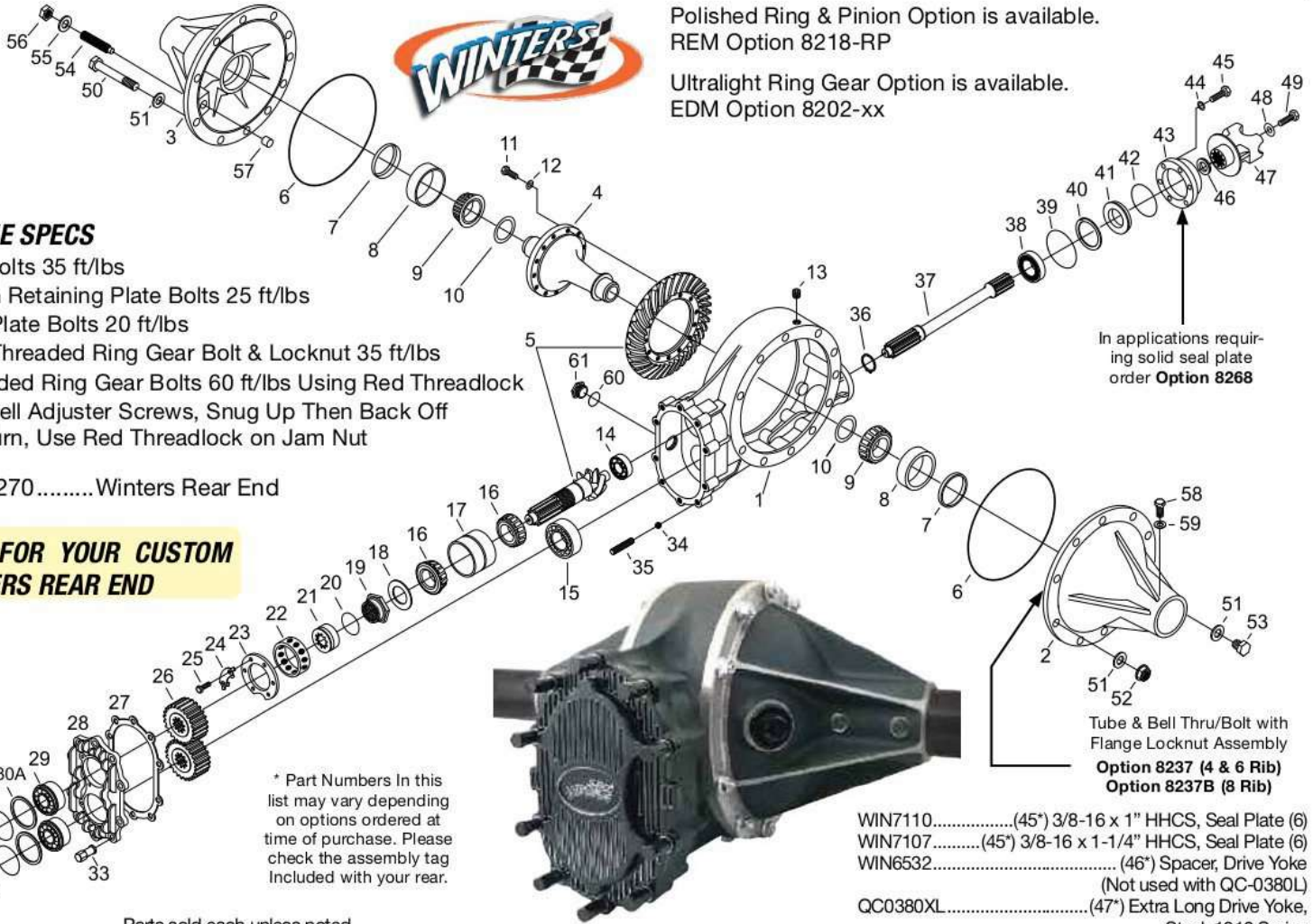
LIGHTEST WEIGHT AGM 10V ON THE MARKET!

XS Power batteries provide the best cranking power and keep the ignition system running at peak levels for the duration of a race night without ever having to connect the charger.

- XS-S1600 16V AGM, 2k Max A
- XS-S1600 16V AGM, 2.4k Max A
- XS-S1200 12V AGM, 2.6k Max A
- XS-1004 16V Intellicharger, 20A
- XS-XP1000 16V AGM, 2.4k Max A
- XS-102R 2AWG batt cable (red)
- XS-102B 2AWG batt cable (blk)
- XS-104R 4AWG batt cable (red)
- XS-104B 4AWG batt cable (blk)

REAR END COMPONENTS

REAR END ASSEMBLY



TORQUE SPECS

- Thrubolts 35 ft/lbs
- Pinion Retaining Plate Bolts 25 ft/lbs
- Seal Plate Bolts 20 ft/lbs
- Non-Threaded Ring Gear Bolt & Locknut 35 ft/lbs
- Threaded Ring Gear Bolts 60 ft/lbs Using Red Threadlock
- Left Bell Adjuster Screws, Snug Up Then Back Off 1/4 Turn, Use Red Threadlock on Jam Nut

WINK5270.....Winters Rear End

CALL FOR YOUR CUSTOM WINTERS REAR END

* Part Numbers In this list may vary depending on options ordered at time of purchase. Please check the assembly tag Included with your rear.

Parts sold each unless noted.

- WIN5840.....(1*) Alum "Sprint" Center Section
- WIN1663-01B.....(2*) Aluminum 6 Rib Right Side Bell
- WIN1663-02.....(3*) Aluminum 6 Rib Left Side Bell
- WIN5034-11A.....(4*) 31 Spline Aluminum Spool
- WIN5400.....(5*) 486 Ratio Ring & Pinion, Standard
- WIN7403.....(6*) O-Ring, 8 Rib Bell (pair)
- WIN7403T.....(6*) O-Ring, 8 Rib Bell (pair)
- WIN7205.....(7*) Seal, Side Bell (pair)
- WIN7283V.....(7*) Seal, Side Bell, Viton (pair)
- WIN7310.....(8*) Bearing Cup, Side Bell (pair)
- WIN7309.....(9*) Bearing Cone, Steel Spools and Differentials (pair)
- WIN7340.....(9*) Bearing Cone, Aluminum Spools and Differentials (pair)
- WIN5097.....(10*) Shim Kit, Steel Spools and Differentials
- WIN5095.....(10*) Shim Kit, Alum Spools and Differentials
- WIN7852.....(11) Ring Gear Bolt, Threaded Ring Gear (12)
- WIN7815.....(12) 3/8" Belleville Washer, Threaded Ring Gear (12)
- WIN7111B.....(13) 3/8" Recessed Socket Head Pipe Plug (pair)
- WIN7331.....(14) Roller Bearing, Pinion Nose
- WIN7339.....(15) Shielded Ball Bearing, Lower Shaft
- WIN7308.....(16*) Bearing Cone, Pinion Shaft (pair)
- WIN7307.....(17*) Double Bearing Cup, Pinion Shaft
- WIN5055.....(18) Bearing Washer
- WIN6485R.....(19) Posi/Lock Nut, Pinion Shaft

- WIN7445.....(20) O-Ring, Posi/Lock
- WIN6484.....(21) Posi/Lock Retainer, Pinion Shaft
- WIN5020.....(22) Retaining Ring, Pinion
- WIN6296A.....(23) Retaining Plate, Pinion
- WIN2374.....(24) Lock Tabs (3)
- WIN7110.....(25) 3/8-16 x 1" HHCS Retaining Plate (6)
- WIN8500.....(26) Quick Change Gear Set (Not Incl)
- WIN6729.....(27*) Gasket, Gear Cover
- WINK6583.....(28*) Gear Cover, Less Bearings
- WIN7521.....(29*) Ball Bearings, Gear Cover (pr)
- WIN7406.....(30*) O-Ring, Bearing Cap (pair)
- WIN7496.....(30A*) Back-Up Ring, O-Ring (pair)
- WIN1667.....(31*) Bearing Cap (pair)
- WIN7994A.....(33) 3/8-16 Aluminum High Nut (10)
- WIN7398.....(34) 5/16" Dia Ball, Gear Cover (10)
- WIN7802.....(35*) 3/8-16 x 1-3/4" Stud, Gear Cover (10)
- WIN7610.....(36) Retaining Ring, Lower Shaft
- WIN5003-021.....(37*) Standard Lower Shaft
- WIN1550.....(37*) Option, Gundrilled, Open Drive Lower Shaft
- WIN7390.....(38) Front Ball Bearing, Lower Shaft
- WIN7413.....(39) O-Ring, Seal Plate
- WIN7653.....(40) Retaining Ring, Seal Plate, 375" Seal
- WIN7652.....(40*) Retaining Ring, Seal Plate, 750" Seal
- WIN7204.....(41*) Seal, Seal Plate, 375" Thin Seal
- WIN7204T.....(41*) Seal, Seal Plate, 750" Thick Seal
- WIN7204V.....(41*) Seal, Seal Plate, 750" Viton Seal
- WIN7474.....(42) O-Ring, Seal
- WIN5018-01ML.....(43) Seal Plate, 750" Seal
- WIN7114.....(44) 3/8" SAE Flatwasher (6)

Polished Ring & Pinion Option is available.
REM Option 8218-RP

Ultralight Ring Gear Option is available.
EDM Option 8202-xx

In applications requiring solid seal plate order **Option 8268**

Tube & Bell Thru/Bolt with Flange Locknut Assembly
Option 8237 (4 & 6 Rib)
Option 8237B (8 Rib)

- WIN7110.....(45*) 3/8-16 x 1" HHCS, Seal Plate (6)
- WIN7107.....(45*) 3/8-16 x 1-1/4" HHCS, Seal Plate (6)
- WIN6532.....(46*) Spacer, Drive Yoke (Not used with QC-0380L)
- QC0380XL.....(47*) Extra Long Drive Yoke, Steel, 1310 Series
- QC0380L.....(47*) Drive Yoke, Steel Uses No Spacer (Most Common)
- WIN5038AS.....(47*) Drive Yoke, Billet Aluminum, 1310 Series
- QC0380.....(47*) Drive Yoke, Steel Uses No Spacer (1/4" Shorter)
- WIN5037.....(48) Retaining Washer, Drive Yoke
- WIN7109Y.....(49) 3/8-24 x 1" HHCS, Drive Yoke
- WIN7176.....(50*) 7/16-20 x 5-1/2" Thrubolt (10)
- WIN7178.....(51) 7/16" SAE Flatwasher, Thrubolt (22)
- WIN7177.....(52) 7/16-20 Flang Locknut, Thrubolt (10)
- WIN7117.....(53) 7/16-14 x 1-1/4" HHCS (2)
- WIN7155.....(54*) 1/2-13 Adj Screw, 8 Rib Side Bell
- WIN6149.....(54*) 1/2-13 Adjusting Screw, 4 & 6 Rib Side Bell
- WIN7167.....(55) 1/2" SAE Flatwasher, Adj Screw
- WIN7137.....(56) 1/2-13 Jam Nut, Adj Screw
- WIN5010.....(57) Thrustblock, Adjusting Screw3
- WIN7109.....(58*) 3/8-24 X 1" HHCS, 4 Rib Side Bell (16)
- WIN7109S.....(58*) 3/8-24 X 1" HHCS, 6 & 8 Rib Side Bell (12)
- WIN7114.....(59) 3/8" SAE Flatwasher (16)
- WIN7454.....(60) O-Ring, Inspection Plug
- WIN6857.....(61) Inspection Plug
- WIN2842.....Aluminum Tube Seal
- WIN5295.....Spool Differential Shim Kit (2.031)
- WIN7165.....Non-Threaded Ring Gear Bolt Kit
- WIN7868.....Threaded Ring Gear Bolt Kit (12)
- WIN6498R.....Aluminum Posi-Lock Assembly

REAR ENDS & COMPONENTS

CLOSED TUBE REAR PARTS



QCW7524.....	Gear Cover Single Row Bearing
QCW5401K.....	4:86 Ring & Pinion Kit (Winters)
QCW5715K.....	4:11 Ring & Pinion Kit (Winters)
QCW0432.....	Aluminum Spool (Winters)
QC0432.....	Aluminum Spool (Frankland)
QCW0400.....	Solid Lower Shaft (Winters)
QC0405PH.....	Lower Shaft (Frankland)
FRKL-SP0017.....	Lower Shaft Bearing (Ft Input Side)
FRKL-SP0018.....	Lower Shaft Bearing (Rr Output Side)
WIN7868.....	Ring Gear Bolt Kit, Threaded (12)
WIN7165.....	Ring Gear Bolt Kit, Non-Threaded (12)
QC0214A.....	Posi-Lock Nut (Frankland)
WIN6498R.....	Posi Lock Assembly, RH Thread
QC0290.....	Spool Bearing (Frankland)
QC0290W.....	Differential Bearing Carrier
QC0280.....	Spool Race (Winters)
WIN5295.....	Spool Differential Shim Kit - 2.031
QC0275.....	Quick Change Bell O-Ring (Frankland)
QCW6746.....	Gear Cover with Bearing
QCW6390ASBK.....	Rear Cover Kit with (10) Studs & Steel Balls & (10) Black Alum Cover Nuts
QC0815.....	Rear End Cover Gasket
QCW7874.....	Rear Cover Fill Plug
QCW3261.....	Winters Side Bell Large Inspection Plug
QCW7794ASBK.....	Short Rear Cover Nut 3/8-16 Black
QCW7794ASM.....	Short Rear Cover Nut 3/8-16 Mill
QCW7802.....	Rear Cover Stud 3/8-16 x 1-3/4" (ea)
QCW7398.....	Rear Cover Ball 5/16" (ea)
QCW7521.....	Bearing, Gear Cover, Double Row
QCW7874.....	Rear Cover Fill Plug
WIN2966-02.....	Breather Assy
WIN12549.....	Axle Nut
QCW5110.....	2.5" GN Tube / Steel Spindle assy str.
QCW6754R.....	2.5" GN Tube / Alum Spindle assy str. (right)
QCW6754L.....	2.5" GN Tube / Alum Spindle assy str. (left)

AXLES, AXLE TUBES & AXLE TUBE SEALS



QC0264-xx.....	Aluminum Axle Tube (Specify Length)
QC0264-xx-1.....	1 ton Axle Tube (Specify Length)
QC0910-xx.....	Gundrilled Axle (Specify Length)
QC0900-xx.....	Solid Axle (Specify Length)
QC0300.....	Quick Change Axle Tube Seal
WIN2842.....	Quick Change Tube Seal
PEMTWSW5S-xx.....	HVY Steel Tube (W5, .625 wall)
QCW3246-xx.....	Alum Axle Tube (2 7/8")
QCW3791-xx.....	Steel Axle Tube (2 7/8")

REAR END FILLER TANK

Lightweight aluminum tank designed for filling rear end. Has a flange for mounting and -10 AN outlet on bottom and -06 AN on side for rear end breather.

Rear End Filler Tank Kit includes:

- -10AN 90° Push-On Fitting
- -10AN Straight Push-On Fitting
- -10AN Male to 1-1/16"-12 O-ring Port
- 3' long 5/8" Push-On Hose



PPM02010.....	Rear End Filler Tank
PPM02010-KT.....	Rear End Filler Tank Kit (Shown)

REAR END BREATHER VENT

Eliminates the need for hose or breather filter. Goes on top of quick change.



PPM911-1741-RV.....	3/8 NPT Quick Change Vent
---------------------	---------------------------

REAR END FILL PORT ADAPTER

PPM941-7005.....	-10AN Male to 1-1/16" O-Ring Port Adapter
------------------	---



WIDE 5 BEARINGS, SEALS, RACES, & LOCK NUTS

PPM11690.....	Inner Hub Bearing
PPM11670.....	Outer Hub Bearing
PPM11720.....	Inner Hub Race
PPM11620.....	Outer Hub Race
PPM11500.....	Hub Seal
PPM11500R.....	Hub Seal, Low Friction
PPM11000.....	Lock Nut Kit (Aluminum)
PPM11000S.....	Lock Nut Kit (Steel)
PPM11900.....	Wide 5 Hub Bearing & Seal Kit
PPM11180.....	REM Bearing & Seal Kit
PPM1210-11000.....	Hub Lock Nut Socket (1" Hex)
PPM1210-12542.....	Hub Lock Nut Socket (W5, 1 ton)
PPM12305.....	Bearing + Inner Race, 1 ton, Wide 5
PPM12305.....	Bearing + Outer Race, 1 ton, Wide 5
PPM12537.....	Hub Seal, 1 ton
WIN1730.....	Gear Lube, SAE 80W/90 with Moly #293

GEARS & HUBS

SPORTSMAN & PREMIUM QC GEAR

PEM



To designate a premium gear, use '65' prefix instead of '61' and replace any 'Q's with 'A's

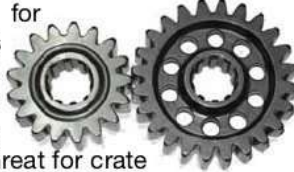
Sportsman QC GEAR

8620 material. 10 spline gears fit Winters, Frankland, Tiger, & other Quick Change Rear Ends. PEM Standard Quick Change Gears are manufactured from 8620 high grade steel, and hobbled to a full finish. Gears are heat treated to ensure strength and longevity.



Premium QC Gear

9310 material for higher HP cars with bigger tires. LW drilled. 1.5 lbs lighter decreases rotating weight. Great for crate late models. REM polished for less friction & longer life. QC Gears run cooler with REM finishing!



Part	No. Teeth	4.11/Hi	4.86/Hi
PEM-61001	23/23	4.11	4.86
PEM-61002	27/28	4.26	5.04
PEM-61015	19/20	4.33	5.10
PEM-61015Q	15/16	4.38	5.18
PEM-61026	27/29	4.41	5.22
PEM-61006	23/25	4.47	5.28
PEM-61025	20/22	4.52	5.34
PEM-61012	26/29	4.58	5.42
PEM-61007	23/26	4.65	5.49
PEM-61007Q	21/24	4.70	5.55
PEM-61017	25/29	4.77	5.63
PEM-61008	22/26	4.86	5.74
PEM-61019	21/25	4.89	5.78
PEM-61009Q	25/30	4.93	5.83
PEM-61009	19/23	4.98	5.88
PEM-61011	22/27	5.04	5.96
PEM-61003	25/31	5.10	6.02
PEM-61013	20/25	5.14	6.07
PEM-61018	23/29	5.18	6.12
PEM-61018Q	22/28	5.23	6.18
PEM-61004Q	18/23	5.25	6.21
PEM-61004	24/31	5.31	6.27
PEM-61020	20/26	5.34	6.31

PEM-61022	19/25	5.41	6.39
PEM-61016	18/24	5.48	6.48
PEM-61010	17/23	5.56	6.57
PEM-61034	16/22	5.65	6.68
PEM-61014	23/32	5.72	6.76
PEM-61035	17/24	5.80	6.86
PEM-61032	19/27	5.84	6.90
PEM-61032Q	23/33	5.90	6.97
PEM-61024	20/29	5.96	7.04
PEM-61036	17/25	6.05	7.14
PEM-61023	18/27	6.16	7.29
PEM-61021	17/26	6.28	7.43
PEM-61027	22/34	6.35	7.51
PEM-61043	16/25	6.42	7.59
PEM-61028	19/30	6.49	7.67
PEM-61029	15/24	6.58	7.77
PEM-61030	16/26	6.68	7.91
PEM-61041	17/28	6.77	8.00
PEM-61031	21/35	6.85	8.10
PEM-61033Q	16/27	6.94	8.20
PEM-61031Q	14/24	7.05	8.33
PEM-61050	20/35	7.19	8.50

CTD SMART TUBE HUB & PARTS



- BERCTD-001 Hub & Race
- BERCTD-011-NS Hub Complete Install Kit 2-7/8"
- BERCTD-003 Hub Bearing
- BERCTD-016 Drive Flange
- BERCTD-021 Hub Lock Nut Kit
- BERCTD-005-NS Hub O-Ring Seal Low Friction
- BERCTD-022 Dust Cap Kit with Aluminum Bolts
- BERCTD-110 Dust Cap Bolt
- BERCTD-002 Race 2-7/8"
- BERCTD-010 Lock Ring Tool

GEAR PAN & STORAGE CASE



- PPM64-230 Plastic Gear Storage Case
- PPM64-240 Aluminum Gear Pan

WINTERS OIL-FILLED 007 HUB KITS

Strong, lightweight magnesium hubs reduce rolling resistance by using low friction type bearings & oil instead of grease.



- WIN4045-F Front Oil-Filled Hub Kit with Tapered Bearings
- WIN4045 Rear Oil-Filled Hub Kit with Tapered Bearings
- WIN3153 Double Sided Socket - Fits 007 Dustcap and Side Bell Inspection Plug
- WIN7210V Oil Seal for 007 Hub

WINTERS GRAND NATIONAL HUBS & PARTS



- WIN2255C 5 on 5" Hub Assy (coarse thread)
- WIN2266C 5 on 4 3/4" Hub Assy (coarse thread)
- WIN12236 2 1/2" Locknut Kit
- WIN3596-01 5/8"-11 Screw in wheel stud x 3.78"
- WIN6522-02 5/8"-11 Press in wheel stud x 3.75"
- WIN5319 2 1/2" Spindle Nut Socket

TRANSMISSIONS & HUBS

ALUMINUM WIDE 5 HUBS



PPM6606X5



WIL270-6513BD



WIL270-6513C



FRONT WIDE 5 HUB KIT

5 bolt Wilwood Starlite 55 Hub, rear drilled stud. Black thermal dispersant coating. Assembly includes aluminum front hub, 5 bolt aluminum dust cap, angular contact bearing and seal kit with trick style aluminum lock nut.

REAR WIDE 5 HUB KIT

5 bolt Black Thermal Dispersant coating. Assembly includes aluminum front hub, 5 bolt 7075-T6 aluminum drive flange, angular contact bearing & seal kit with trick style aluminum lock nut.

- PPM6606-FX5.....Polished Aluminum Front Hub
- PPM6606-X5..... Polished Aluminum Rear Hub
- WIL270-6735BDWilwood Starlite 55 Hub Black Coated, Front Drilled Stud
- WIL270-6513BDWilwood Starlite 55 Hub Black Coated, Rear Drilled Stud
- WIL270-6735C..... Wilwood Starlite 55 Hub, Front
- WIL270-6513C..... Wilwood Starlite 55 Hub, Rear
- WIL230-0620 5/8"-11 RH Wheel Stud Bolt Kit

DRIVE FLANGES & FRONT CAPS



PPM1614BK



PPM3215



PPM3230



PPM5094-8



PPM5094-5



PPM1314G

- PPM1614BKLightweight Aluminum Dust Cap Blk
- WIN3230 5-Bolt Aluminum Drive Flange Blk
- WIN3215 8-Bolt Aluminum Drive Flange Blk
- WIN5094-5..... 5-Bolt Dust Cap with Gasket Blk
- WIN5094-8..... 8-Bolt Dust Cap with Gasket Blk
- PPM1314G..... Dust Cap O-Ring
- WIN12177-5..... Drive Flange Stud Kit 5-Bolt Hubs

BALL SPLINE REBUILD KIT



BER3-BS-OK-NEW.....Rebuild Kit

FALCON SLIDER TRANSMISSIONS

Falcon Roller Slide Transmission telescopes 5-1/2" at the rear yoke allowing your drive line and suspension the freedom to move forward and rearward without inducing or limiting roll steer. It has all the advantages of more drive line travel and less maintenance, while being durable.



- WIN60120-10.....Falcon Roller Slider Aluminum Transmission (10 Spline Input)
- WIN60100 Falcon Aluminum Transmission (10 Spline Input)

BERT TRANSMISSIONS

All Bert late model transmissions feature "over center" shifter for positive high gear engagement. All Bert transmissions now feature "dog teeth" final drive for smooth shifts and positive engagement. Transmission features an internal clutch assembly for reduced rotating weight.



- BERLMZ..... Aluminum Transmission (48 lbs)

BERT BALLSPINE TRANSMISSIONS



Feature "over center" shifter for positive high gear engagement, "dog teeth" final drive for smooth shifts and positive engagement, & an internal clutch assembly for reduced rotating weight.

- BERLMZ-BSBallSpline Aluminum Transmission

BERT SECOND GENERATION TRANSMISSIONS



Bert's Second Generation Transmission provides an edge to Late Model and Modified Racers, with 50% less rotating weight, and the lightest and lowest drag unit available. The reliability & performance using new shifting-clutch system has increased the gearing in & out of the pits more ideally suited for today Late Models. Built with the highest quality materials & have the latest technologies available.

- BERSG-1300.....Bert Second Gen Transmission
- BERSG-1400..... Bert Second Generation (Muncie Length)
- BERSG-1500..... Bert BallSpline Magnesium Second Gen Transmission
- BERSG-1310..... Bert 1-Lever Second Gen Shifter

TRANSMISSION COMPONENTS



Bert



Falcon



Parts



Rebuild



BERT TRANSMISSION COMPONENTS

BERT LM Bellhousings - Chevy and Ford Late Model

PPMBER301F



Bellhousings are less flywheel and coupler.

NOTE: Please call for other makes and model bellhousinging.

BER301-C-NFCBERT Chevy LM Bellhousing

BER301-F-NFC..... BERT Ford LM Bellhousing



BER7



BER311-NC-EXT

BER371H



Couplers & Flywheels

BER7Coupler, Chevy Short

BER371H Steel HTD Crank Coupler

BER311-NC-EXT Crate Chevy 3" External Balance

BER320-NC-EXT Crate Chevy 3" Ext Bal with HTD

BER320NC.....Crate Chevy Int Bal with HTD

BER320-LS1 LS1/LS3 with HTD

BER324NC.....Crate Chevy Flywheel Shim



Two Piece Flywheel

BER370 Flywheel Ring Chevy

Chevy Flywheel Shim

BER324Chevy Flywheel Shim

Idler Gears & Bellhousing Plate

BER303Idler Gear

BER304 Idler Gear Bushing

BER306 Idler Gear Shaft

BER307 Bellhousing Plate LM

BER308 Idler Gear Spring

BER309 Idler Gear Washer

BER310 Idler Gear Shaft Grease Fitting

HTD Belts - 8mm pitch x 20mm wide.

PPM536-8M.....536mm Length

PPM560-8M.....560mm Length

PPM576-8M.....576mm Length

PPM600-8M.....600mm Length

PPM632-8M.....632mm Length

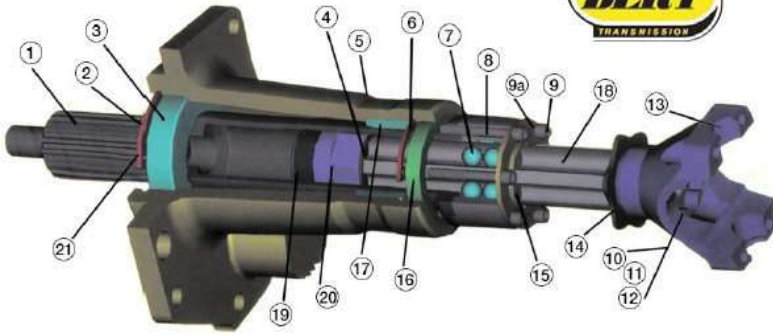
PPM624-8M.....624mm Length

PPM640-8M.....640mm Length



TRANSMISSION COMPONENTS

BALL SPLINE REBUILD COMPONENTS



- BER3-1 (1) Output Shaft Tube
- BER3-2 (2) Front Bearing Snap Ring
- BER3-3 (3) Front Bearing
- BER3-4 (4) Steel Washer .90
- BER3-5 (5) Tail Housing Ball Spline
- BER3-6 (6) Rear Snap Ring
- BER3-7 (7) Ball Bearing 1/2"
- BER3-8B (8B) Ball Retainer Ring Double Seal
- BER3-9 (9) Allen Cap Screw 1/4-28, 2"
- BER3-9A (9A) Hi-Lock Washer
- BER3-10 (10) Bolt 3/8-24, 1-1/2"
- BER3-11 (11) Lock Washer
- BER3-12 (12) Washer
- BER3-13 (13) Aluminum Yoke
- BER3-14 (14) Stop Washer
- BER3-15 (15) Ball Washer Seal
- BER3-15B (15B) Front Seal
- BER3-16 (16) Tailhousing Seal
- BER3-17 (17) Roller Bearing
- BER3-18 (18) Ball Spline Shaft
- BER3-19 (19) Wear Ring
- BER3-20 (20) Friction Bushing
- BER3-21 (21) Output Snap Ring

STARTERS



- BER332 Bert HD Reverse Mount Starter (BERT, Brin, Falcon)
- WIN62164 Starter Mounting Plate
- WIN62916-01 Starter Shim (.040 Thick)
- WIN62916-02 Starter Shim (.060 Thick)
- QCP-50-2001 Starter Jumper Wire with Spade

FALCON TRANSMISSION REPAIR PARTS



- WIN62823-21
- WIN62822-2
- WIN67574
- WIN67256
- WIN61853-6-1
- WIN61852-5-1
- WIN61852-5-1 Steel Clutch Disc
- WIN61853-6-1 Clutch Friction Disc
- WIN67574 Tailshaft Bearing
- WIN67257 Tailshaft Seal Standard
- WIN67256 Tailshaft Seal Roller Slider
- WIN62823-2 Falcon LM Rebuild Kit
- WIN67259 Falcon Shift Shaft Seal
- WIN67480 Falcon Counter Shaft O-Ring
- WIN67481 Falcon Reverse Shaft O-Ring
- WIN67482 Falcon Piston O-Ring
- WIN67555 Input Shaft Bearing & Snap Ring
- WIN67568 Falcon Needle Bearing
- WIN68052 Falcon Case Plug
- WIN68660 Tail Housing Needle Bearing
- WIN68662 Falcon Splined Shaft Bearing

LATE MODEL REBUILD KITS

LM Basic Rebuild Kit includes the following components:

- BER26 - Radius Tooth Clutch Disks (6)
- BER65 - Late Model Rear Oil Seal
- BER71 - Fork Retaining Pins (2)
- BER76 - Frost Plugs 3/4" Cup (2)
- BER62 - Brake Cup 1-3/8"
- BER29 - Front Oil Seal
- BER49 - Shifter Seals (2)
- BER15 - O-Ring
- BER60 - Extension Bushing
- BER91 LM Basic Transmission Rebuild Kit

LM Full Rebuild Kit includes the following components:

- BER26 - Radius Tooth Clutch Disks (6)
- BER65 - Late Model Rear Oil Seal
- BER71 - Fork Retaining Pins (2)
- BER76 - Frost Plugs 3/4" Cup (2)
- BER32 - Front Input Bearing
- BER56 - Output Bearing
- BER29 - Front Oil Seal
- BER49 - Shifter Seals (2)
- BER93 LM Full Transmission Rebuild Kit
- BER15 - O-Ring
- BER60 - Extension Bushing
- BER20 - Radial Needle Bearing (2)
- BER45 - Cage Needle Bearing (2)
- BER74 - Cage Needle Bearing (2)
- BER18 - Thrust Needle Roller (3)
- Thrust Washers 30/60/90 (7)

SHIFTERS

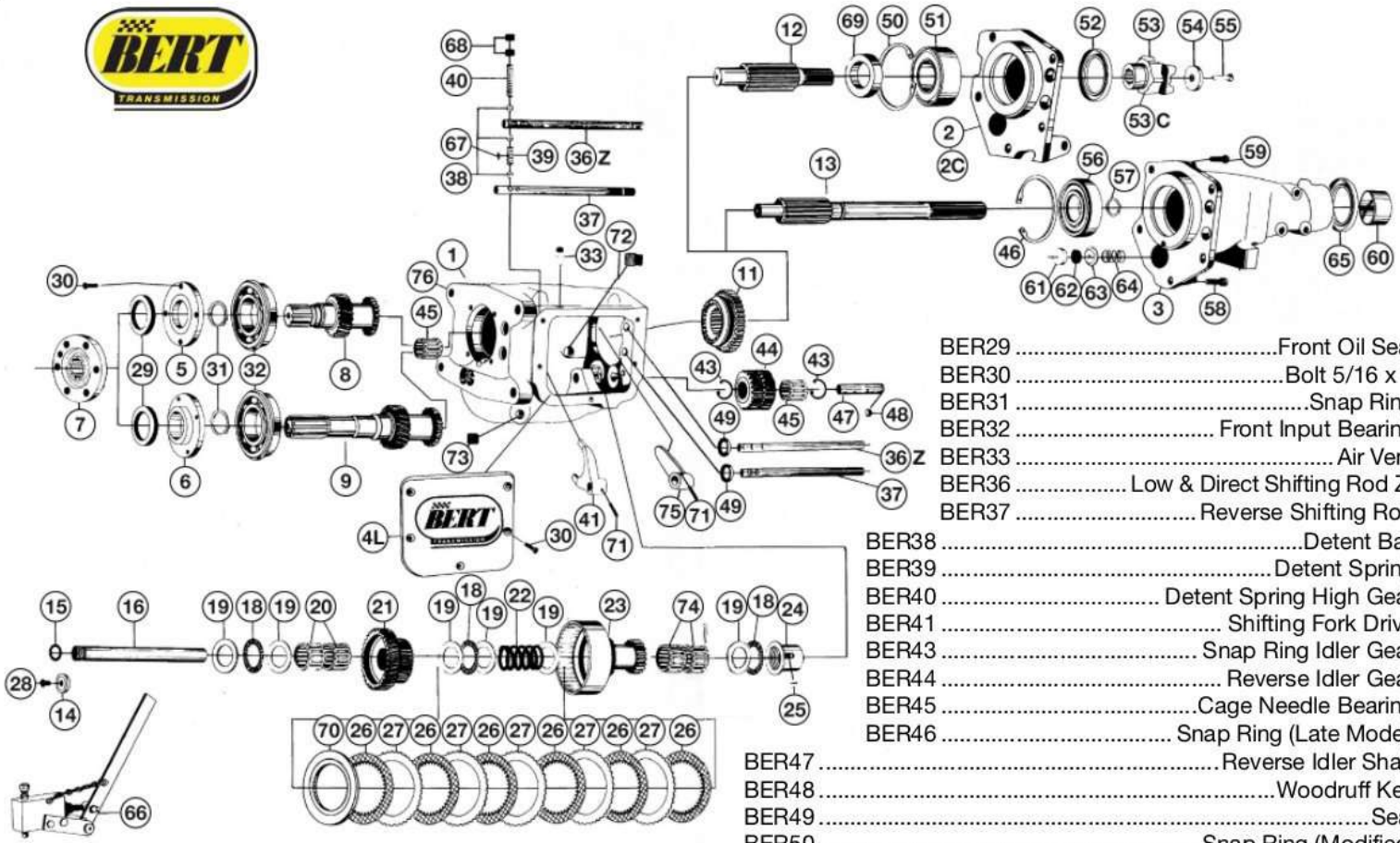
Shifter rods, rod ends or clevises depending on application, are included.

- PPM1000 Shifter with 20" Rods & Heims
- PPM1020 Bert Shifter Clevis



FIRST GEN TRANS COMPONENTS

BERT FIRST GENERATION TRANSMISSION COMPONENTS

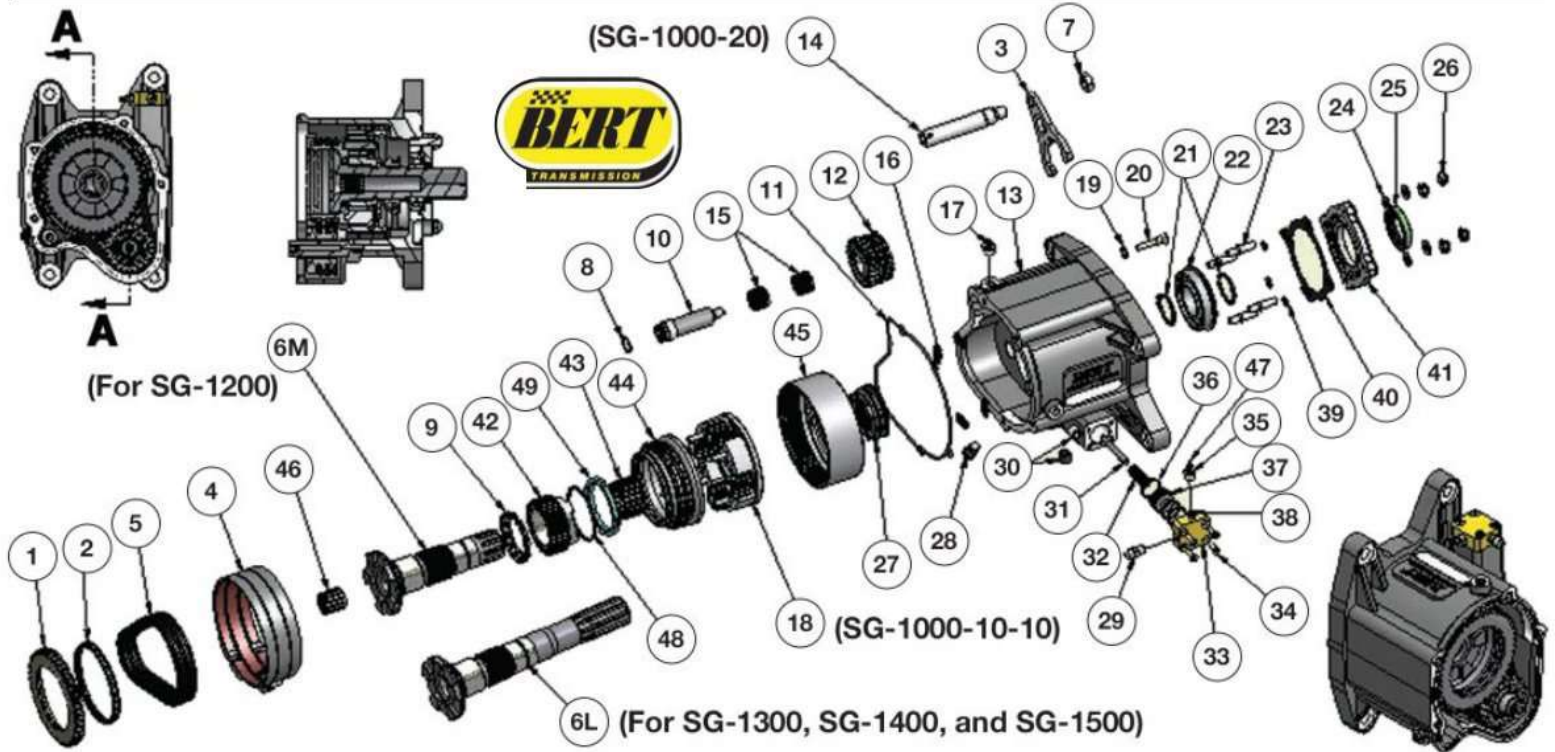


- BER1 Main Casting
- BER2 Rear Cover (Open Drive)
- BER2C Rear Cover (Close Drive)
- BER3 Tail Housing (Late Model)
- BER4L Side Cover (Late Model)
- BER4M Side Cover (Modified)
- BER5 Front Seal Cover (Short Input)
- BER6 Front Cover (Long Input)
- BER7 Drive Flange
- BER8 Input Modified 8Z*
- BER9 Input Late Model 9Z*
- BER11 Direct Slider 11Z*
- BER12 Output Modified
- BER13 Output Late Model
- BER14 Counter Shaft Lock Washer
- BER15 O-Ring
- BER16 Counter Shaft
- BER18 Thrust Needle Roller
- BER19 Thrust Washer
- BER20 Cage Needle Roller 3/4"
- BER21 Front Counter Gear
- BER22 Spring Counter
- BER23 Rear Counter Gear
- BER24 Push Sleeve
- BER25 Push Sleeve Key
- BER26 Clutch Disk
- BER27 Steel Clutch
- BER28 Button Head Screw 5/16 x 1/2

- BER29 Front Oil Seal
- BER30 Bolt 5/16 x 1
- BER31 Snap Ring
- BER32 Front Input Bearing
- BER33 Air Vent
- BER36 Low & Direct Shifting Rod Z*
- BER37 Reverse Shifting Rod
- BER38 Detent Ball
- BER39 Detent Spring
- BER40 Detent Spring High Gear
- BER41 Shifting Fork Drive
- BER43 Snap Ring Idler Gear
- BER44 Reverse Idler Gear
- BER45 Cage Needle Bearing
- BER46 Snap Ring (Late Model)
- BER47 Reverse Idler Shaft
- BER48 Woodruff Key
- BER49 Seal
- BER50 Snap Ring (Modified)
- BER51 Output Bearing (Modified)
- BER52 Rear Oil Seal
- BER53 Yoke
- BER53C Yoke (Closed Drive)
- BER54 Rear Yoke Washer
- BER55 Bolt 3/8 NF x 1-1/4
- BER56 Output Bearing (Late Model)
- BER57 Snap Ring (Late Model)
- BER58 Hex Socket Cap Screw 7/16 NC x 1-1/4
- BER59 Cap Screw 7/16 NC x 1-1/4
- BER60 Extension Bushing
- BER61 Piston 1-3/8
- BER62 Break Cup 1-3/8
- BER63 Break Cup Extender
- BER64 Spring
- BER65 Rear Oil Seal
- BER66 Clutch Master
- BER67 Interlock Pin
- BER68 Filling Plug
- BER69 Output Spacer
- BER70 Clutch Spacer
- BER71 Fork Retaining Pin
- BER72 Magnetic Plug
- BER73 Drain Plug
- BER74 Cage Needle Bearing
- BER75 Reverse Shifting Fork
- BER76 Frost Plug 3/4
- BER77 Shifter Detent Ball (Modified)

SECOND GEN TRANS COMPONENTS

BERT SECOND GENERATION TRANSMISSION COMPONENTS



- BERSG-1029..... (1) Reverse Gear
- BERSG-1031-K..... (2) Reverse Bearing
(Seal Together with SG-1061)
- BERSG-1061..... (2B) Steel Ball 3/16"
- BERSG-1017..... (3) Selector Fork
- BERSG-1030-K..... (4) Bert Band + Band Anquer
- BERSG-1076..... (5) Double Row Chain
- BERSG-1002..... (6M) Input Shaft for SG-1200
- BERSG-1003..... (6L) Input Shaft Late (13/14/1500)
- BERSG-1056..... (7) Hex Nylon Lock 1/2-20 UNF
- BERSG-1079..... (8) O-Ring OD 3/4ID 5/8 x 1/16
- BERSG-1032-K..... (9) Carrier Truste Support Bearing
- BERSG-1027..... (10) Reverse Gear Shaft
(Seal Together with SG-1034)
- BERSG-1038..... (11) Case Gasket
- BERSG-1028..... (12) Reverse Idler Gear
- BERSG-1001..... (13) Main Casting
- BERSG-1000-20..... (14) Front Fork System Sub Asbly
- BERSG-1057..... (15) Needle Bearing 20x24x17
- BERSG-1021..... (16) Trust Washer
- BERSG-1068..... (17) Breather
- BERSG-1000-10-10..... (18) Carrier Sub Assembly
- BERSG-1054..... (19) O-Ring OD 9/16 Wall 1/16
- BERSG-1022..... (20) Front Fork Support Screw
- BERSG-1080..... (21) External Retaining Rings
- BERSG-1053..... (22) Input Shaft Bearing 6207Z
- BERSG-1037..... (23) Front Cover Stud
- BERSG-1156..... (24) Flat Washer 5/16
- BERSG-1052..... (25) Shaft Seal CRWA1-R
- BERSG-1258..... (26) Hex Nylon Lock 5/16-24 UNF

- BERSG-1006..... (27) Sun Gear Selector
- BERSG-1033..... (28) Band Anchor Stud
- BERSG-1064..... (29) Servo AN Adapter
- BERSG-1063..... (30) Magnetic Drain Plug 1/4NPT
- BERSG-1019..... (31) Band Anchor Shaft
- BERSG-1078..... (32) Piston Return Springs
OD 5/8 x 1-1/4 x w(.069 x .109)
- BERSG-1020..... (33) Servo Cover
- BERSG-1066..... (34) Flat Head 82°#10-24 UNC x .75
- BERSG-1065..... (35) Servo Bleed
- BERSG-1081..... (36) O-Ring 1/16 x 1 (A.P.D.N)
- BERSG-1018..... (37) Servo Piston
- BERSG-1077..... (38) O-Ring 13/16
- BERSG-1082..... (39) Stud O-Ring
- BERSG-1039..... (40) Gasket
- BERSG-1004..... (41) Front Cover
- BERSG-1012..... (42) Sun Gear
- BERSG-1069..... (43) Needle Bearing 40 x 45 x 27
- BERSG-1009..... (44) L and R Carrier
- BERSG-1007..... (45) Carrier Crown
- BERSG-1058..... (46) Needle Bearing WJ 12x16x16
- BERSG-1065..... (47) Servo Bleed Adapter Plug
- BERSG-1016..... (48) Sun Gear Trust Ring
- BERSG-1011..... (49) Carrier Support

BERT BLUE MAGIC TRANSMISSION FLUID

Blended to insure greater bearing and gear protection, easier shifting & smoother and quieter clutch operation. Also significantly reduces trans operating temperatures.

BERTR-OIL..... Bert Blue Magic Trans Oil (qt)

DRIVESHAFTS & CHASSIS

STEEL DRIVESHAFTS



U-Joints included, 2" OD x .095 wall, yoke sold separately*

Part Number	Weight	Length	Diameter
FSTDSS-355N	10.20 lbs	35.5"	2"
FSTDSS-365N	10.42 lbs	36.5"	2"
FSTDSS-37N	10.50 lbs	37.0"	2"
FSTDSS-375N	10.64 lbs	37.5"	2"
FSTDSS-38N	10.76 lbs	38"	2"
FSTDSS-385N	10.87 lbs	38.5"	2"
FSTDSS-39N	10.98 lbs	39"	2"

ALUMINUM DRIVESHAFTS



U-Joints included, 3" OD x .125 wall, yoke sold separately*

Part Number	Weight	Length	Diameter
FSTDSA-355N	6.40 lbs	35.5"	3"
FSTDSA-365N	6.60 lbs	36.5"	3"
FSTDSA-37N	6.75 lbs	37"	3"
FSTDSA-375N	6.96 lbs	37.5"	3"
FSTDSA-38N	7.14 lbs	38"	3"
FSTDSA-385N	7.32 lbs	38.5"	3"
FSTDSA-39N	7.50 lbs	39"	3"

CARBON FIBER DRIVESHAFTS



U-Joints included, 3.25" OD, yoke sold separately*

Part Number	Weight	Length	Diameter
FSTDSC-355N	6.30 lbs	35.5"	3.25"
FSTDSC-365N	6.48 lbs	36.5"	3.25"
FSTDSC-37N	6.62 lbs	37"	3.25"
FSTDSC-375N	6.76 lbs	37.5"	3.25"
FSTDSC-38N	7.03 lbs	38"	3.25"
FSTDSC-375N	7.20 lbs	38.5"	3.25"
FSTDSC-39N	7.41 lbs	39"	3.25"

*To determine the correct length of your driveshaft: Measure from center to center of the u-joints

STEEL CLAMPS

PPM015C	1-1/2" Clamp
PPM017C	1-3/4" Clamp
PPM020C	2" Clamp



STEEL SHOCK MOUNT CLAMPS

PPM0186	1-1/2" Clamp
PPM0187	1-3/4" Clamp
PPM0188	2" Clamp



YOKES U-JOINTS & U-BOLTS



PPMYKE-8	Slip Yoke 8" Long
PPMYKE-8HD	Slip Yoke 8" Long, Heat Treated
PPMYKE-8WA	Slip Yoke 8" for Carbon Fiber
PPMYKE-67	Slip Yoke 6-3/4" Long
QC0380	Quick Change Drive Yoke 3"
QC0380L	Quick Change Drive Yoke (+.250)
QC0380XL	Quick Change Drive Yoke XL (+1")
QC0381	Quick Change Drive Yoke Bolt & Washer
PPMUBK-BBSK	Quick Change U-Bolt Straps
PPMUBK-10	U-Bolt Kit (Quick Change Rear Ends)
PPMUBK-10L	U-Bolt Kit (Longer Threads than UBK-10)
PPMUBK-FS	U-Bolt Kit (1330 Special/3R Conv)
PPM1-0153	U-Joint (1310 Spicer)
PPM1-5349	U-Joint (1330 Special/3R Conversion)

ALUMINUM A-ARM SPACERS

PPM12250A	1/2" ID x 1" OD, 1/4"
PPM12375A	1/2" ID x 1" OD, 3/8"
PPM12999A	1/2" ID x 1" OD, 1"
PPM16000-01	5/8" to 1/2", .530 wide (2 ea.) fits 12-10 rod
PPM16000-01	3/4" to 1/2", .530 wide (2 ea.) fits 12 rod
PPM16000-58	5/8" to 1/2" (2 ea.)
PPM16000-34	3/4" to 1/2" (2 ea.)



BALL JOINT SLEEVES

PPM-141BJ	GM Lower Press-In, MOOG K6141
PPM-727BJ	Chrysler Lower Screw-In, MOOG K727
PPM-772BJ	Chrysler Upper Screw-In, MOOG K772



CHASSIS BUSHINGS

Steel chassis bushings are sold in packs of 10

PPM38250	1/4", 3/8" ID	PPM58330	3/8", 5/8" ID
PPM12250	1/4", 1/2" ID	PPM58500	1/2", 5/8" ID
PPM12500	1/2", 1/2" ID	PPM58625	5/8", 5/8" ID
PPM12750	3/4", 1/2" ID	PPM58750	3/4", 5/8" ID
PPM58100	.100", 5/8" ID	PPM34250	1/4", 3/4" ID
PPM58200	.200", 5/8" ID	PPM34500	1/2", 3/4" ID
PPM58250	1/4", 5/8" ID	PPM34750	3/4", 3/4" ID



CHASSIS COMPONENTS

TUBE ENDS & WELD NUTS



PPM-051WN



PPM-057TE



PPM-059TE



PPM-053TE

PPM-051WN	Weld Nut - 1/2-13UNC, 3/4" OD, 1" Flange, 1/2" Long
PPM-052WN	Weld Nut - 7/16-20 UNF, 3/4" OD, 1" Flange, 7/8" Long
PPM-053TE	Tube End - 5/8-18 UNF RH, 1-1/2" Long, 13/16" OD
PPM-054TE	Tube End - 5/8-18 UNF LH, 1-1/2" Long, 13/16" OD
PPM-055TE	Tube End - 5/8-18 RH, 2-3/16" Long, 13/16" ID
PPM-056TE	Tube End - 5/8-18 LH, 2-3/16" Long, 13/16" ID
PPM-057TE	Tube End - 3/4-16 UNC RH, 1-1/4" Long, 1" OD
PPM-058TE	Tube End - 5/8-18 UNF RH, 1-1/2" Long, 1" OD
PPM-059TE	Tube End - 1/2-20 UNF RH, 1" Long, 3/4" OD
PPM-060TE	Tube End - 1/2-20 UNF LH, 1" Long, 3/4" OD
PPM-060G	Saddle Gusset - 1/16" Thick, 1-1/2" Radius
PPM-050WN	Weld Nut - 3/8-18, 5/8" OD to 3/4" Flange, 1/2" Long
PPM-053WN	Weld Nut - 7/16-20, 9/16" OD to 1" Flange, 1/2" Long
PPM-054WN	3/8" NPT Aluminum Weld-In Bung
PPM-055WN	1/2" NPT Aluminum Weld-In Bung

TAPERED BUSHINGS



PPM0310-C12	3/8" Aluminum, 1/2" ID
PPM0310-C58	3/8" Aluminum, 5/8" ID
PPM0310-C34	3/4" Aluminum, 3/4" ID
PPM581500-C	2" Aluminum, 5/8" ID

BODY BRACES



QUARTER PANEL BRACE KIT: (1) 31-3/4" (bottom of quarter panel) bent 120° (1) 28" (middle of quarter panel), bent 90°. Aluminum is .125 thick and is prebent at proper angles with predrilled rivet holes and brace mount holes.

DOOR PANEL BRACE: (1) 66" aluminum angle, .125 aluminum, prebent at proper angles. predrilled rivet holes & brace mount holes.
 PPM7100 Quarter Panel Brace Kit, 1 Upper & 1 Lower
 PPM7110 Door Panel Brace (66" Long Aluminum)

STEP BUSHINGS



All bushings are made of DOM steel.

Part	Length	I.D.
PPM4062	1/4" Long	5/8" to 1/2" ID
PPM4080	3/8" Long	5/8" to 1/2" ID
PPM4042	0.425 Long	5/8" to 1/2" ID
PPM4065	1/2" Long	5/8" to 1/2" ID
PPM4085	5/8" Long	5/8" to 1/2" ID
PPM4087	0.685" Long	5/8" to 1/2" ID
PPM4090	1" Long	5/8" to 1/2" ID
PPM4095	1-1/4" Long	5/8" to 1/2" ID
PPM4097	1.375" Long	5/8" to 1/2" ID
PPM4098	2" Long	5/8" to 1/2" ID
PPM4099	2 1/2" Long	5/8" to 1/2" ID
PPM4059	1/4" Long	3/4" to 1/2" ID
PPM4055	1/4" Long	3/4" to 5/8" ID
PPM4060	9/16" Long	3/4" to 5/8" ID
PPM4070	5/8" Long	3/4" to 5/8" ID
PPM4075	11/16" Long	3/4" to 5/8" ID
PPM16000-01	LCA 5/8 - 1/2" Spacer (#12-10 Rod end)	
PPM16000-02	LCA 3/4 - 1/2" Spacer (#12 Rod end)	

ROD END REDUCER BUSHINGS



PPM1258-34	5/8" to 1/2" I.D
PPM5834-34	3/4" to 5/8" I.D
PPM4058	3/4" to 5/8" Misalign

RIVETS

3/16 Head Aluminum Rivets - 250/Box



PPMABS-68	3/16" Button Head, 3/8" Long
PPMABS-66	3/16" Button Head, 1/2" Long
PPMABS-612	3/16" Button Head, 3/4" Long
PPMALSE-18183	1/2" Med Head, .062-.375 grip
PPMALS-66	3/16" Large Head, 3/8" Long
PPMALS-66B	3/16" Large Head, 3/8" Long (Black)
PPMALS-66W	3/16" Large Head, 3/8" Long (White)
PPMABSM-66	3/16" MultiGrip, 3/8" Grip (Mill)
PPMABSP-66	3/16" Peel Button, 3/8" Grip (Mill)
PPMABSP-68	3/16" Peel Button, 1/2" Grip (Mill)
PPMABSP-66R	3/16" Peel Button, 3/8" Grip (Red)
PPMABSP-66B	3/16" Peel Button, 3/8" Grip (Black)
PPMABSP-66W	3/16" Peel Button, 3/8" Grip (White)
PPMABS-316	Back-Up Washers (3/16") 500/Box

1/8 Head Aluminum Rivets - 100/Box

PPMABS-44	1/8" Button Head Rivets
-----------	-------------------------

DZUS FASTENERS



PPMZ-201S	1.38" Quick Fastener Spring, 10-pk
PPMZ-202S	.500 Quick Fastener Button, 10-pk
PPMZ-205S	.550 Quick Fastener Button, 10-pk
PPMZ-204S	.600 Quick Fastener Button, 10-pk
PPMZ-203S	7/16" Self Eject Button (.500 Grip), 10-pk
PPMZ-206S	.600 Quick Fastener Button, 10-pk

CHASSIS & BODY COMPONENTS

CHASSIS TABS/BRACKETS



- PPM-066BK Steering Shaft Bracket, 1/8" Thick, 8" Long
 PPM-069BK Steering Shaft Bracket, .085" Thick 2-1/4" Long
 PPM-021G Gusset, 1/8" Thick with 1/2" Hole
 PPM-025T Seat Belt Chassis Tab, 3/16" Thick, 1/2" Hole
 PPM-026T Chassis Tab, 1/8" Thick, 1" Center-to-End, 1/2" Hole
 PPM-027T Chassis Tab, 3/16" Thick, 3/4" Center-to-End, 1/2" Hole
 PPM-028T Chassis Tab, 3/16" Thick, 1" Center-to-End, 3/8" Hole
 PPM-029T Chassis Tab, 1/8" Thick, 5/8" Center-to-End, 1/4" Hole
 PPM-033T Seat Belt Chassis Tab, 1/4" Thick, 1/2" Hole
 PPM-034T Body Tab 90°, 1/8" Thick, 1-1/4" Center-to-End, 1/4" Hole
 PPM-028D Body Trick Tab, 1/8" Thick, 1/4" Hole
 PPM-043T Body Tab, .085" Thick, 1/4" Hole
 PPM-044T Body Tab, 1/8" Thick, 1" Center-to-End, 1/4" Hole
 PPM-046T Body Tab, 1/8" Thick, 5/8 Center-to-End, 1/4" Hole
 PPM-045SM Shock Mount Plates, 1/8" Thick, 1/2" Hole (pair)
 PPM4007BL Rear Shock Mount, L .250 Alum (pair)
 PPM4007BR Rear Shock Mount, R .250 Alum (pair)
 PPM-024BJ Upper Control Arm Ball Joint Plate
 PPM-030T Chassis Tab, 1/8" Thick, 1" & 1-3/4" Center-to-End, 1/4" Holes, Square End, 2-1/8"
 PPM-031T Chassis Tab, 1/16" Thick, 1" Center-to-End, 7/16" Hole, Square End, 1-7/16"
 PPM-032T Chassis Tab, 1/8" Thick, 2" Center-to-End, 1/2" Hole, Square End, 2-3/4"
 PPM-036T Chassis Tab, 3/16" Thick, 3/4" Center-to-End, 3/8" Hole
 PPM-037T Chassis Tab, 1/8" Thick, 1/2" Slotted Hole
 PPM-045T Chassis Tab, 3/16" Thick, 1-1/4" Center-to-End, 1/2" Hole, Radius End
 PPM-050T Engine Tab, 3 3/8" L w/2 3/8" Holes

BODY BOLT KITS



- PPM10AW-K 1" Alum Tapered Washer Kit 10 pk
 PPMZ-208S 1" Alum Washer for 1/4" Body Bolt (10 pk)
 PPMZ-209S 1" Blk, Alum Washer for 1/4" Body Bolt (10 pk)
 PPM14AW-K 1-1/4" Alum Tapered Washer Kit 10-pk
 PPM14SEM-K 1/4" Body Bolt Kit (10 pk)
 PPM14AWB-K 1-1/4" Tapered Washer Kit, Black (10 pk)
 PPM10AWB-K 1" Tapered Washer Kit, Black (10 pk)
 PPM15AW-10 1-1/4" Alum Countersunk Washer (10 pk)
 PPMZ-207S 1-3/8" Spring Plate w/ 1/4-20 Zerk (10 PK)

HOOD PINS



- PPM64-208B Aluminum Hood Pins, Black (pair)
 PPM64-216 6" Black Aluminum Hood Pin Mount
 PPM64-217 7" Black Aluminum Hood Pin Mount
 PPM64-209 Machined Ultimate Hood Pins with Hood Support Flange
 PPM64-210 Hood Pin Clips (pair)
 PPM64-212 Hood Pin Scuff Plate

WELD-ON CALIPER BRACKETS



- PPM-070BK 1/4" Thick, 3-1/2" - Superlite
 PPM-071BK 1/4" Thick, 5-1/4" - Dynalite
 PPM-073BK 1/4" Thick, Large GM, 3" Radius
 PPM-072BK 1/4" Thick, GM Metric Small

DLM NOSE SKID PLATES



- PPM7027 Nose Skid Plate 3/8" Thick Plastic
 PPM7026 Nose Skid Plate .080 Aluminum
 PPM7020 Rack Guard Skid Plate .080 Aluminum
 PPM7021 Rack Guard Skid Plate Rocket XR1
 PPM7022 Rack Guard Skid Plate Longhorn

BREAKAWAY DESIGN SPOILER & PARTS



8" spoilers are made of heavy duty .080" aluminum. Include 2 spoiler sides & 1 center brace, 8" spoiler blade with bent in 1" upper lip brace. No need for 1" aluminum angle. Adjustable spoiler brackets bent in blades. Available in milled finish or powdercoated colors.

COMPLETE BREAKAWAY SPOILER KITS

- PPM7208-ML.....8" Mill
- PPM7208-FB8" Flat Black
- PPM7208-BK 8" Black
- PPM7208-WH8" White
- PPM7208-RD8" Red
- PPM7208-BL8" Blue
- PPM7208-YL..... 8" Yellow

PPM7208-FO 8" Flourescent Orange (complete assy only)

ACCESS PANELS



PPM7030Access Panel (Hinged 12" x 6")



PPM7032xx..... Access Panel (Hinged 8"x8")

BK - Black	RD - Red
CB - Chevron Blue	WH - White
ML - Mill Finish	YL - Yellow
OR - Orange	

SPOILER BRACKETS

8" & 12" spoiler brackets are designed for spoiler on all late model dirt cars. Bracket comes unbent & are made of .080 mill finish aluminum.



- PPM70088" Spoiler Bracket
- PPM701212" Spoiler Bracket
- PPM7015 3/16" Aluminum Body Brace Tab

SPOILER KIT COMPONENTS

How to Order: PPM7208+2 digit color code+1 digit item code

Color Codes:

ML (Mill)	RD (Red)
BK (Black)	BL (Blue)
WH (White)	YL (Yellow)

Item Codes:

1 - 57" Long Spoiler Blade	4 - Left Spoiler Blade
2 - 15" Long Spoiler Blade	5 - Center Spoiler Piece
3 - Right Spoiler Blade	6 - Cutaway Center Support

Example: A red, left spoiler blade - **PPM7208 + RD + 4**
Part # = PPM7208RD-4

BODY ACCESSORIES



- PPM7134001 Spring Steel (40' Long x 1" x .062)
- PPM7134002 Spring Steel Shrink (25' L x 1" x .062)
- PPM2811101 Spring Steel Punch
- PPM2811101-P Spring Steel Punch Pin
- PPM72-HINGE Aluminum Continuous Hinge 1.5"x 6"
- PPMAANG1-1254 Aluminum Angle 1"x 1"x 1/8"x 4'
- PPMAANG1-1256 Aluminum Angle 1"x 1"x 1/8"x 6'
- PPMAFLT1-3164 Aluminum Flat Strap 1"x 3/16"x 4'
- PPMAFLT1-3166 Aluminum Flat Strap 1"x 3/16"x 6'

ROOFS & CAPS

Dominator roofs are a 2-pc rigid high impact plastic. Fiberglass carbon fiber look roof cap install fast.



- DOM-706 Straight Dominator Roof Cap
- PPM7060-B Aluminum Roof, Black
- PPM7060-W Aluminum Roof, White
- FS-006-5101xx MD3, Advanced Composite
- CB-Chevron Blue, B-Black, W-White, Y-Yellow, R-Red
- FS-006-0500xx Plastic Colored Roof Cap

AVAILABLE IN YOUR CHOICE OF 10 COLORS, SHOWN BELOW



- FS-006-0500CF Roof Cap (carbon fiber look)

BODY COMPONENTS

EVOLUTION 2 FENDERS & VALANCES



UPPER FENDERS

- FS-32004-23251BL..... L, Black
- FS-32004-23251BR..... R, Black
- FS-32004-23251CBL..... L, Blue
- FS-32004-23251CBR..... R, Blue
- FS-32004-23251OL..... L, Orange
- FS-32004-23251OR..... R, Orange
- FS-32004-23251RL..... L, Red
- FS-32004-23251RR..... R, Red
- FS-32004-23251WL..... L, White
- FS-32004-23251WR..... R, White
- FS-32004-23251YL..... L, Yellow
- FS-32004-23251YR..... R, Yellow

LOWER VALANCES

- FS-32004-23351BL..... L, Black
- FS-32004-23351BR..... R, Black
- FS-32004-23351CBL..... L, Blue
- FS-32004-23351CBR..... R, Blue
- FS-32004-23351OL..... L, Orange
- FS-32004-23351OR..... R, Orange
- FS-32004-23351RL..... L, Red
- FS-32004-23351RR..... R, Red
- FS-32004-23351WL..... L, White
- FS-32004-23351WR..... R, White
- FS-32004-23351YL..... L, Yellow
- FS-32004-23351YR..... R, Yellow

EVOLUTION 2 DIRT NOSES



NOSES

- FS-32004-41051B Black
- FS-32004-41051CB Blue
- FS-32004-41051O Orange
- FS-32004-41051R Red
- FS-32004-41051W White
- FS-32004-41051Y Yellow

NOSE VALANCES

- FS-32004-41751B Black
- FS-32004-41751CB Blue
- FS-32004-41751O Orange
- FS-32004-41751R Red
- FS-32004-41751W White
- FS-32004-41751Y Yellow

MD3 NOSE GRAPHICS



- FS-32123-44141 CHEVY SS Graphics
- FS-32133-44141 CAMARO SS Graphics
- FS-32323-44141 MUSTANG Graphics
- FS-32313-44141 FORD FUSION Graphics

HOOD SCOOPS, WINDSHIELDS & SHROUDS



PPM7040



PPM7040

- PPM7040 Rock Guard Windshield (Tinted Lexan)
- DOM-540 Radiator Shroud 23.5"x21"x3"
- DOM-900-BK Dominator Rock Guard, Black
- DOM-900-WH Dominator Rock Guard, White

STOCK CAR NOSES



- XG PU OR FO RD PK WH YL BL BK



- DOM-308 Headlight Graphics

- DOM-300-XX... Monte Carlo
- DOM-330-XX Camaro

BODY COMPONENTS

MD3 EVOLUTION TWO-PIECE NOSE SETS



- | | |
|------------------------------|-------------------------------|
| FS-32003-41051-B Black | FS-32003-41051-R Red |
| FS-32003-41051-CB Blue | FS-32003-41051-W White |
| FS-32003-41051-O ... Orange | FS-32003-41051-Y Yellow |

MD3 EVOLUTION FENDERS



UPPER LEFT

- FS-3200-23251BL Black
- FS-32003-23251CBL Blue
- FS-32003-23251OL Orange
- FS-32003-23251RL Red
- FS-32003-23251WL White
- FS-32003-23251YL Yellow

UPPER RIGHT

- FS-32003-23251BR Black
- FS-32003-23251CBR Blue
- FS-32003-23251OR Orange
- FS-32003-23251RR Red
- FS-32003-23251WR White
- FS-32003-23251YR Yellow

MD3 VALANCES



LEFT

- FS-32003-41751-BL Black
- FS-32003-41751-CBL Chevron Blue
- FS-32003-41751-ORL Orange
- FS-32003-41751-RL Red
- FS-32003-41751-FRL Fluorescent Red
- FS-32003-41751-WL White
- FS-32003-41751-YL Yellow
- FS-32003-41751-FYL Fluorescent Yellow
- FS-32003-41751-BOL Bright Orange

RIGHT

- FS-32003-41751-BR Black
- FS-32003-41751-CBR Chevron Blue
- FS-32003-41751-ORR Orange
- FS-32003-41751-RR Red
- FS-32003-41751-FRR Fluorescent Red
- FS-32003-41751-WR White
- FS-32003-41751-YR Yellow
- FS-32003-41751-FYR Fluorescent Yellow
- FS-32003-41751-BOR Bright Orange

MD3 COCKPIT AIR DEFLECTORS



- FS-040-4106-B 3", Black
- FS-040-4106-W 3", White
- FS-040-4106-CB 3", Blue
- FS-040-4106-R 3", Red
- FS-040-4106-Y 3", Yellow
- FS-040-4107-CLR .. Clear Extension

MD3 MODIFIED NOSES



- FS-020-410B MD3 Nose (3-Piece Set, Black)
- FS-020-410CB MD3 Nose (3-Piece Set, Blue)
- FS-020-410O MD3 Nose (3-Piece Set, Orange)
- FS-020-410R MD3 Nose (3-Piece Set, Red)
- FS-020-410W MD3 Nose (3-Piece Set, White)
- FS-020-410Y MD3 Nose (3-Piece Set, Yellow)

MD3 HOOD AIR DEFLECTORS



- FS-040-4100-CF 3", Carbon Fiber
- FS-040-4100-W 3", White
- FS-040-4100-CB 3", Blue
- FS-040-4100-R 3", Red
- FS-040-4100-Y 3", Yellow

- FS-040-4114-xx 3" Hood Scoop BK, WH, YL, RD, BL

- FS-040-4116-xx 5" Hood Scoop BK, WH, YL, RD, BL

- FS-040-4105-xx Oil Cooler Scoop BK, WH, YL, RD, BL

MD3 ROCKER PANELS



- FS-007-5500-B MD3 Rocker (Black)
- FS-007-5500-CB MD3 Rocker (Chevron Blue)
- FS-007-5500-O MD3 Rocker (Orange)
- FS-007-5500-R MD3 Rocker (Red)
- FS-007-5500-FR MD3 Rocker (Flourescent Red)

- FS-007-5500-W MD3 Rocker (White)
- FS-007-5500-Y MD3 Rocker (Yellow)
- FS-007-5500-FY MD3 Rocker (Flourescent Yellow)
- FS-007-5500-BO MD3 Rocker (Bright Orange)
- FS-007-5500-FG MD3 Rocker (Flourescent Green)

WHEELS & TOOLS

WIDE 5 ALUMINUM WHEELS



- WEL559-5453-6 Outer Beadlock w/Cover 15x14x5
- WEL559-5465-6 Inner Beadlock w/Tabs 15x14x5
- WEL559-5415 Non-Beadlock 15x14x5
- WEL559-5455-6 Outer Beadlock w/Cover 15x14x5
- WEL559-5405-6 Non-Beadlock w/Cover 15x14x5
- WEL559-5405NC Non-Beadlock w/Tabs 15x14x5
- WEL559-5455NC Outer Beadlock w/Tabs 15x14x5
- WELP650-4514A-6 Mud Cover
- WELP650B-4514A-6 Mud Cover (blk)

WHEEL COVERS



Rigid, high impact plastic and includes Dzus buttons.

- | | |
|--|-------------------------------------|
| DOM-1013-BK Vented (Black) | DOM-1012-BK Black |
| DOM-1013-BL Vented (Blue) | DOM-1012-BL Blue |
| DOM-1013-RD Vented (Red) | DOM-1012-RD Red |
| DOM-1013-WH Vented (White) | DOM-1012-WH White |
| DOM-1013-YL Vented (Yellow) | DOM-1012-YL Yellow |
| DOM-1013-FY Vented (Florescent Yellow) | DOM-1012-FY Florescent Yellow |
| DOM-1013-FO Vented (Florescent Orange) | DOM-1012-FO Florescent Orange |

TIRE PREP & TOOLS



- PPM609-007 7" Tire Grinding Disc - 5/8" Threaded
- PPM609-0550 Tire Needler, Hardened & Polished Pins
- PPM609-2015 Stagger Tape
- PPM2900BK 18" x 1500' Black Stretch Wrap

QUICKCAR BRAKE GAUGES



- QCP-64-510....Caliper Brake Pressure Gauges 1/8 npt
- QCP-61-103....Mini Brake Bias Gauges (Horizontal)

WHEEL SPACERS



- PPM70-2000 1" Wide 5 Spacer, 5/8" Studs
- PPM70-3000 1" 5 x 5" Spacer, 5/8" Studs
- PPM70-3100 1" 5 x 4-3/4" Spacer, 1/2" Studs
- PPM70-3200 1" 5 x 4-1/4" Spacer, 1/2" Studs
- PPM70-3300 1" 5 x 4-1/2" Spacer, 1/2" Studs
- PPM70-2250250" Thick, W-5 Spacer
- PPM70-2500500" Thick, W-5 Spacer
- WIL270-2189C 2" W-5 Spacer, 5/8" Studs

CHASSIS SETUP TOOLS



- QCP-56-830 Caster Camber Gauge & Case
- QCP-56-161 Quick Angle Kit with Case (1.25")

QUICKCAR TRAILER TOOLS



- QCP-56-021 Liquid Filled Tire Press Gauge (20psi)
- QCP-56-020 Tire Pressure Gauge (20psi)
- QCP-64-253 8' Ratchet Tie-Down Strap
- QCP-64-230 Gear Box, Plastic
- QCP-64-140 Carb Storage Box
- QCP-56-155 Tire Durometer 0-100
- QCP-56-100 Valve Core Removal Tool
- PPM200100 Short Valve Stem (Straight)

POLISHER/SANDER & ACCESSORIES



- Variable dial speed control from 1,000-3,000 rpm. Includes a rubber pad, Velcro pad, wool bonnet, wrenches & extra set of brushes. 9' cord, 5/8"-11 spindle thread.
- PPM609-11501 7" Polisher/Sander
 - PPM609-8727 8" Velcro Sanding Pad
 - PPM609-0160236-8 No Hole Velcro (10 pack)

NOW AVAILABLE



PPM JUST BUILT BETTER TEE

Gildan DryBlend Tagless 50/50 t-shirt
Size: S, M, L, XL, 2XL, 3XL, Moisture Wicking



- PPMA120M..... Medium
- PPMA120L..... Large
- PPMA120XL.....X-Large
- PPMA120XXL..... XX-Large
- PPMA120XXXLXXX-Large

PPM JUST BUILT BETTER HOODIE

GILDAN HEAVY BLEND 50/50 UNISEX HOODED PULLOVER
Size: S, M, L, XL, 2XL, 3XL



- PPMA410M..... Medium
- PPMA410L..... Large
- PPMA410XL.....X-Large
- PPMA410XXL..... XX-Large
- PPMA410XXXLXXX-Large



PPMA230... HAT..



ADJUSTMENT GUIDE

TO TIGHTEN CAR ON ENTRY	TO TIGHTEN CAR IN MIDDLE OF CORNER	TO TIGHTEN CAR ON EXIT
Increase Compression Left Front Shock Decrease Compression Right Rear Shock Increase Rebound 5th Coil Raise J-Bar on Chassis 1/2" at a Time Lower J-Bar on Pinion 1 Click at a Time Lower Right Bottom 4-Link Rod on Chassis Stiffen Left Front Spring 25# at a Time Lower Right Side of Ride Heights Decrease Left Side Weight %	ON THROTTLE MIDDLE Less Rebound Left Rear Shock More Gas Pressure in Left Rear Front Shock Less Compression in Right Rear Shock Lower Left Bottom Bar on Chassis Less Rebound Right Front Shock Lower Right Top Bar on Chassis OFF THROTTLE MIDDLE More Compression Right Front Shock Less Compression Right Rear Shock Increase Rebound 5th Coil Shock	Less Rebound Left Rear Shock More Gas Pressure Left Rear Front Shock Less Compression Right Rear Shock Increase Wedge (Bite) Raise Left Top Bar on Chassis More Left Rear Spring Less Right Rear Spring More Right Front Spring (May Loosen Entry)

TO LOOSEN CAR ON ENTRY	TO LOOSEN CAR IN MIDDLE OF CORNER	TO LOOSEN CAR ON EXIT
Less Compression Right Front Shock Increase Compression Left Rear Shock (If Slamming Down) Increase Gas Pressure Left Rear Front Shock (If Slamming Down) Less Rebound 5th Coil Shock Raise J-Bar on Pinion 1 Click at a Time Soften Left Front Spring 25# at a Time Raise Right Bottom 4-Link Rod on Chassis Increase Left Side Weight %	ON THROTTLE MIDDLE Increase Rebound Right Front Shock Raise Left Bottom 4 Bar on Chassis Less Gas Pressure in Left Rear Front Shock Add Stagger Less Rebound Left Front Shock Raise Right Top 4-Link on Chassis OFF THROTTLE MIDDLE Less Compression Right Front Shock More Compression Left Rear Shock (If Slamming Down) More Gas Pressure Left Rear Front Shock (If Slamming Down) Decrease Rebound 5th Coil Shock	Decrease Wedge (Bite) Lower Left Top Bar on Chassis Soften Left Rear Spring Stiffen Right Rear Spring Lower Left Side Ride Heights Less Gas Pressure Left Rear Front Shock (If Slamming Down) Less Rebound Left Front Shock

TO TIGHTEN CARS HANDLING	TO LOOSEN CARS HANDLING	LEFT REAR SHOCK HINTS
Raise Ballast & Left Side Ride Heights Stiffen Left Side Springs Run Standard 4-Link Lengths Reduce Stagger	Lower Ballast & Left Side Ride Heights Lengthen Right Rear 4-Link Lengths Increase Stagger	Softening Rebound in Left Rear Behind Shock will Increase Left Rear Bite Increasing Gas Pressure in Left Rear Front Shock will Increase Left Rear Bite A Left Rear Front Shock Can be Run to Control Acceleration & Braking 4c-0r for Momentum Cornered tracks & a 6c-0r for Tighter Cornered Tracks Use a Gas Shock for Maximum Braking Control & Traction on Dry Slick Tracks Use a Dual-Tube Shock when there is Maximum Traction

LEFT REAR

TO LOOSEN CORNER MIDDLE ON THROTTLE

Raise Left Bottom Rod on Chassis

Raising Left Bottom Rod on Chassis will Create more Hike-Up and More Rear Steer, Loosing Car on Throttle

Lowering Left Bottom Rod on Chassis will Hold Load on Rear Mounted Spring & Promote Less Roll Steer, Tightening Car on Throttle

TO LOOSEN CORNER EXIT

Lower Left Top Rod on Chassis

TO TIGHTEN CORNER MIDDLE ON THROTTLE

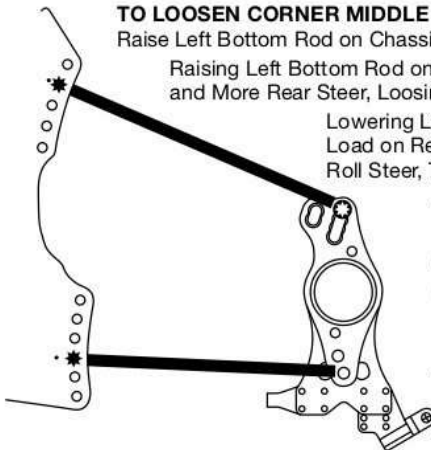
Lower Left Bottom Rod on Chassis
 Lower Left Top Rod on Birdcage

TO TIGHTEN CORNER ENTRY

Lower Left Bottom Rod on Chassis

TO TIGHTEN CORNER EXIT

Raise Left Top Rod on Chassis
 Lower Left Bottom Rod on Chassis



RIGHT REAR

TO LOOSEN CORNER MIDDLE

Raise Right Top Rod on Chassis

Lengthen Right Side Top Bar & Bottom Bar for More Rear Steer on Tight Cornered or Heavy, Tacky Race Tracks

Can Also Decrease Lap Times on Momentum Race Tracks (Depending on Driving Style)

TO LOOSEN CORNER ENTRY

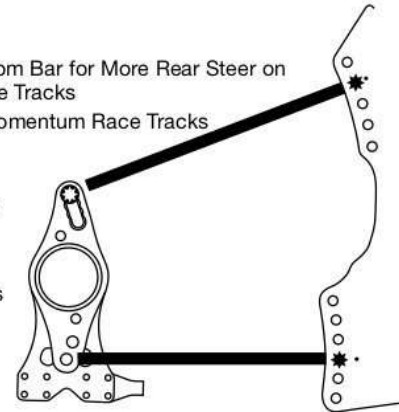
Raise Right Bottom Rod on Chassis
 Lower Right Top Rod on Chassis

TO TIGHTEN CORNER ENTRY

Lower Right Bottom Rod on Chassis

TO TIGHTEN CORNER EXIT

Lower Right Top Rod on Chassis



JUST BUILT BETTER

