

# **Performance Transmission Cooler Bar and Plate**

(124065000)

2017-2020+ GM 6.6L Duramax (L5P) w/  
Allison 1000/2000 Series Transmissions

## ***Installation Guide***

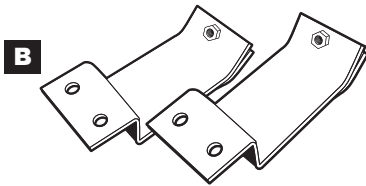
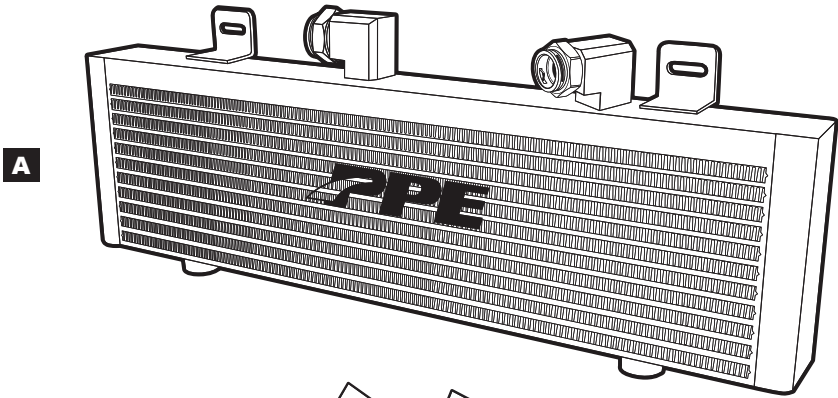


**DISCLAIMER OF LIABILITY**

Performance products can increase horsepower above and beyond factory specifications. Additional horsepower creates more stress on the drive-train components, which could result in drive-train failure.

Note regarding emissions-related, non-E.O.-legal products: THESE PRODUCTS ARE LEGAL IN CALIFORNIA ONLY FOR RACING VEHICLES THAT MAY NEVER BE USED, OR REGISTERED OR LICENSED FOR HIGHWAY OR OFF-ROAD USE.

This agreement sets forth the terms and conditions for the use of PPE products. The installation of this product indicates that the Buyer has read and understands this agreement and accepts the terms and conditions. PPE (Pacific Performance Engineering) Inc., its distributors, employees, and dealers (the "Seller") shall not be responsible for the product's proper use and service. The buyer hereby waives all liability claims. The Buyer hereby acknowledges no reliance on the Seller's skill or judgment to select or furnish goods suitable for any particular purpose and that there are no liabilities which extend beyond the description on the face hereof, and the Buyer hereby waives all remedies or liabilities expressed or implied, arising by law or otherwise (including without any obligation of the Seller with respect to fitness, merchantability and consequential damages), or whether or not occasioned by the Seller's negligence. The Seller disclaims any warranty and expressly disclaims any liability for personal injury or damages. The Buyer acknowledges and agrees that the disclaimer of any liability for personal injury is a material term for this agreement and the Buyer agrees to indemnify the Seller and to hold the Seller harmless from any claim related to the item of equipment purchased. Under no circumstances will the Seller be liable for any damages or expenses by reason of use or sale of any such equipment. The Seller assumes no liability regarding the improper installation or misapplication of its products. It is the installer's responsibility to check for proper installation and if in doubt, contact the manufacturer. The Buyer is solely responsible for all warranty issues from the manufacturer.



### CONTENTS

- A: Bar and Plate style Transmission Cooler with Fittings (1)
- B: Lower rear mounting brackets (2)
- C: Bracket bolts (2)
- D: Bracket nuts (4)
- E: Cooler to bracket fasteners (4)
- F: Lower transmission cooler bolts (2)

## ***Disassembly***

*Vehicle off. Engine cool.*

*Step 1 Remove under hood radiator cover.*

*Step 2 Disconnect fog lights.*

*Step 3 Access bumper bolts and remove using a 24" long extension.*

*Step 4 Remove bumper.*

*Step 5 Remove clips from left and right trans cooler lines.  
TIP: To minimize spillage, put a towel/rag around the lines.  
Disconnect factory transmission cooler lines.*

*Step 6 Remove factory top bracket bolts. Save both factory top bracket bolts for reuse.*

*Step 7 Remove stock trans cooler and set aside.*

## Installation

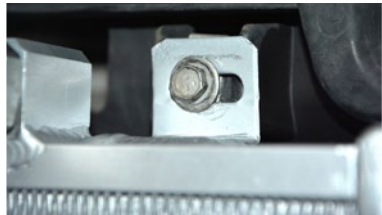
**Step 8** Remove PPE fittings. Coat fittings with anti-seize. Install and tighten both to 80 inch lbs.



**Step 9** Bolt both lower, rear Transmission Cooler brackets (B) to the vehicle bumper bracket with supplied hardware (C).



**Step 11** Position PPE Transmission Cooler between bumper brackets and install top, passenger and driver side upper bracket bolts reusing saved factory hardware. Leave loose for now.



**Step 10** Align and bolt both driver and passenger side lower Transmission Cooler tabs to lower, rear Transmission Cooler bracket (B) with supplied hardware (D, E). Tighten all hardware.



*Step 12 Attach plastic air deflector to driver and passenger side lower Transmission Cooler mounts with lower Transmission Cooler bolt hardware included (F).*



*Step 13 Snap-fit transmission cooler fluid lines into the Transmission Cooler fittings. Check to ensure a tight fit.*



*Step 14 Slide and snap black plastic retainer clips into position on both fittings.*



*Step 15 Recheck fittings and tighten all hardware.*

*Step 16 Start engine. Check fluid level. Fill as needed.  
Check for leaks.  
Install bumper, grill and cover.*

*Installation complete*