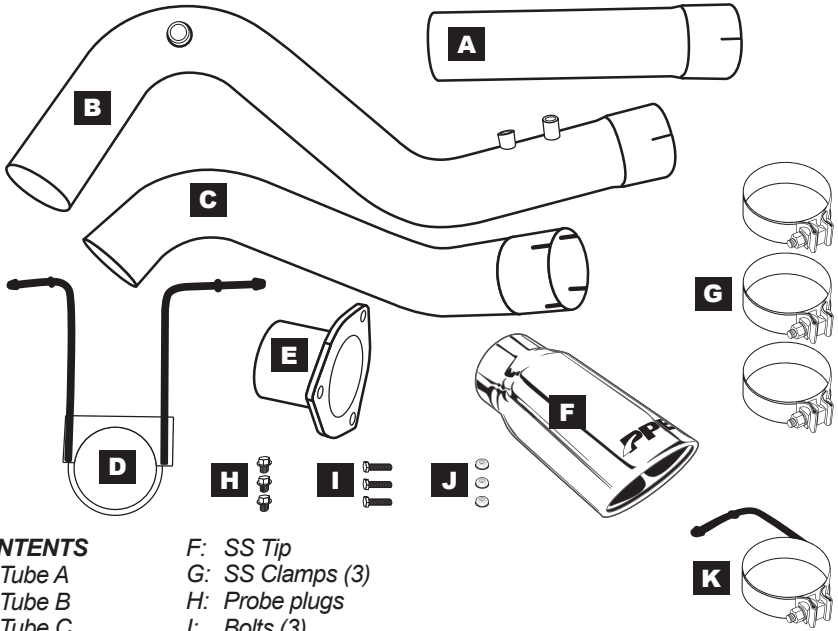


Stainless Steel Cat-Back Performance Exhaust System

(117010350)
2007.5-2017 GM 6.6L Duramax

Installation Guide



CONTENTS

- | | |
|-------------------|-------------------------|
| A: Tube A | F: SS Tip |
| B: Tube B | G: SS Clamps (3) |
| C: Tube C | H: Probe plugs |
| D: Hanger bracket | I: Bolts (3) |
| E: Flange | J: Nuts (3) |
| | K: SS Clamp with hanger |

Installation

- Step 1 Engine off and cool.
- Step 2 Safely elevate and secure vehicle.
- Step 3 Spray penetrating fluid on stock hardware if necessary in preparation for disassembly.
- Step 4 Disconnect lower rear passenger-side shock and secure out of the way.
- Step 5 Disconnect probes and secure out of the way. Remove stock bolts from the flange in front of the muffler. Unfasten hangers from rubber mounts. You may wish to have help from another person to safely maneuver the stock exhaust out of position. Carefully rotate and remove the stock muffler and exhaust tubing.



Step 6 Install flange (E) on stock tubing using hardware (I, J) provided.



Step 7 Fit one clamp (G) over the front slotted end of tube A. Fit tube A over the installed flange. Leave loose at this time.

Step 8 Fit one clamp (G) over the rear end of tube A. Leave loose at this time.



Step 9 Feed the slotted end of tube B over rear axle. Install hanger bracket (D) over the slotted end of tube B. Feed hangers through rubber mounts to secure. Connect tube B to tube A and fit clamp (G) over the junction. Leave loose at this time.



Step 10 Install clamp with hanger (K) on the slotted end of tube C and fit over the rear end of tube B. Leave loose at this time. Feed hanger through rubber mount.

Step 11 Install clamp on tube C. Fit Stainless Steel Tip (F) over the end of tube C. Fit clamp (G) over the junction. Leave loose at this time.



Step 12 Orient the tubing so the hangers are secure and nothing contacts the exhaust. Pivot tube C so the exhaust tip is positioned straight and level.

Step 13 Install probes or probe plugs (H) in tube B.



Step 14 Tighten clamps (G, K), starting forward from the flange and moving back towards the tip (F), being careful that the exhaust is clear from contacting surrounding surfaces.

Step 15 Reinstall shock.

Step 16 Lower vehicle. Note tip position is where you prefer. Ensure the entire assembly is clear of surrounding surfaces. Adjust as necessary. Recheck hangers and clamps for tightness.

Installation complete.