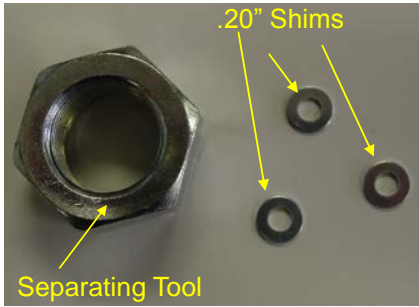


GM 6.6L DURAMAX LLY/LBZ/LMM  
DODGE 6.7 CUMMINS 2008-2010

[Shim Kit](#)  
Installation Guide



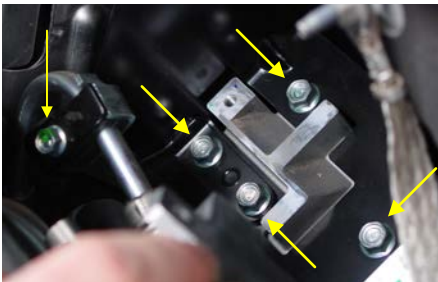
### Step 1

Locate the glow plug controller mounted on driver side firewall. Remove 2 bolts holding the controller case cover.



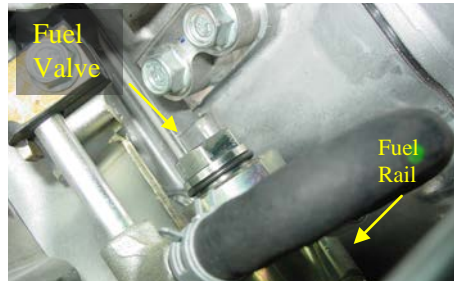
### Step 2

Remove the 5 bolts shown below. Remove black metal casing under bolts to access the Fuel Pressure Valve.



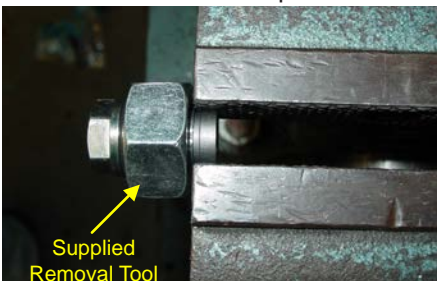
### Step 3

Fuel Pressure Valve can now be seen after removing the glow plug controller assembly. Unscrew valve and remove from fuel rail.



### Step 4

Take valve and thread the supplied nut tool onto the valve. Then place the valve in a vice, clamping down on the side of the valve cap.



### Step 5

Use a wrench to unscrew the supplied nut in order to remove the valve cap. Be careful to hold the end of valve while doing this! It is spring loaded and you don't want to lose the parts.



**Step 6**

Another view of removing the valve cap after loosening in step 5.

**Step 8**

Replace valve spring and then cap. Note that there are 3 holes in a triangle position on the inside of the valve cap that does not need to be removed from cap and should face towards the spring as it did when it was removed; hole alignment is not necessary.

**Step 10**

make sure that the valve cap is held by the indentations. Then install the valve back in your vehicle. Replace the black metal casing, and reassemble the Glow Plug Controller Casing.

**Step 7**

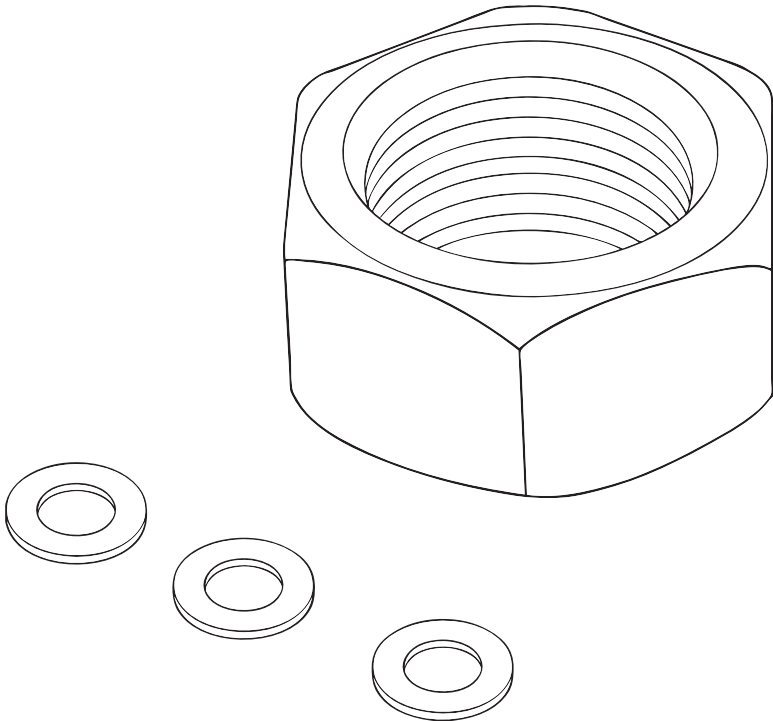
Remove the metal spring, then insert the two supplied metal shims into the valve. 3 shims are supplied with the DURAMAXIMIZER, however only 2 need to be used.

**Step 9**

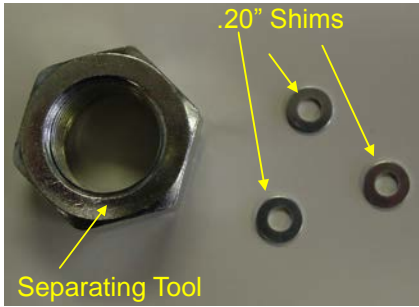
Place the valve back in the vice, now place a thick piece of cardboard (or piece of wood) behind valve cap to prevent damage to the valve seal surface. Tighten the vice so that the valve cap re-enters the valve until fully seated. No need to overtighten, just tighten until snug.



Take a small punch and small hammer and re-strike the 3 factory indentations along the lip where the valve casing covers the valve cap. You may need to loosen the vice slightly to rotate the valve to gain access to all 3 indentations, but do not let the spring push the cap out! Make sure that the cap stays fully seated in the valve while rotating it. After doing so loosen the vice and



**GM 6.6L DURAMAX LLY/LBZ  
DODGE 6.7 CUMMINS 2008-2010**  
Shim Kit  
Installation Guide



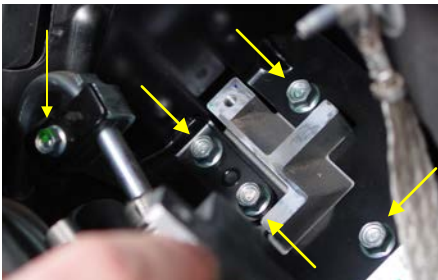
### Step 1

Locate the glow plug controller mounted on driver side firewall. Remove 2 bolts holding the controller case cover.



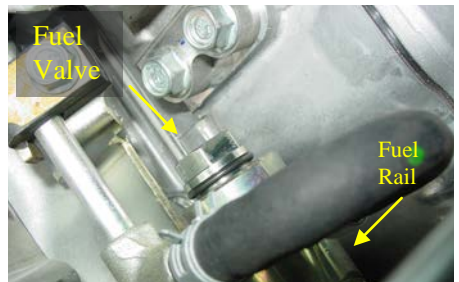
### Step 2

Remove the 5 bolts shown below. Remove black metal casing under bolts to access the Fuel Pressure Valve.



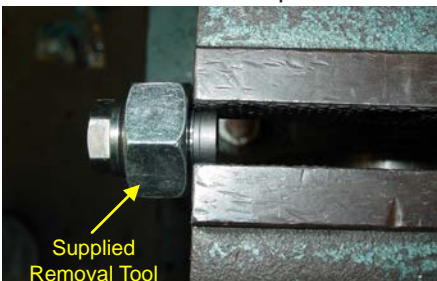
### Step 3

Fuel Pressure Valve can now be seen after removing the glow plug controller assembly. Unscrew valve and remove from fuel rail.



### Step 4

Take valve and thread the supplied nut tool onto the valve. Then place the valve in a vice, clamping down on the side of the valve cap.



### Step 5

Use a wrench to unscrew the supplied nut in order to remove the valve cap. Be careful to hold the end of valve while doing this! It is spring loaded and you don't want to lose the parts.



**Step 6**

Another view of removing the valve cap after loosening in step 5.

**Step 8**

Replace valve spring and then cap. Note that there are 3 holes in a triangle position on the inside of the valve cap that does not need to be removed from cap and should face towards the spring as it did when it was removed; hole alignment is not necessary.

**Step 10**

make sure that the valve cap is held by the indentations. Then install the valve back in your vehicle. Replace the black metal casing, and reassemble the Glow Plug Controller Casing.

**Step 7**

Remove the metal spring, then insert the two supplied metal shims into the valve. 3 shims are supplied with the DURAMAXIMIZER, however only 2 need to be used.

**Step 9**

Place the valve back in the vice, now place a thick piece of cardboard (or piece of wood) behind valve cap to prevent damage to the valve seal surface. Tighten the vice so that the valve cap re-enters the valve until fully seated. No need to overtighten, just tighten until snug.



Take a small punch and small hammer and re-strike the 3 factory indentations along the lip where the valve casing covers the valve cap. You may need to loosen the vice slightly to rotate the valve to gain access to all 3 indentations, but do not let the spring push the cap out! Make sure that the cap stays fully seated in the valve while rotating it. After doing so loosen the vice and