

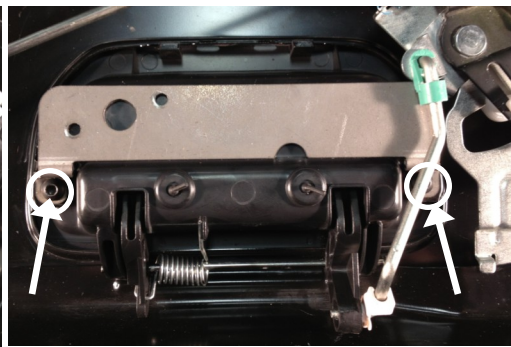
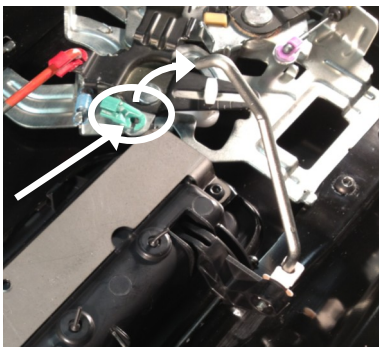
**Package Contents:** Lock Bezel, 2 Keys, Mounting Bracket  
Locking Bolt Linkage, Crank Linkage  
2 Screws #8-32 x 1 1/2", 1 Bolt 1/4" x 2"  
Locking Bolt Linkage and Slide Bolt  
Long and Short Wire Harness, Zip Ties

**Tools Required:** 10mm Socket, T40 Torx Bit, Phillip Head  
5/32" Allen Wrench  
Rubber Mallet  
Power Drill  
3/16" (or 5mm), 1/2" (or 12mm) Drill Bits

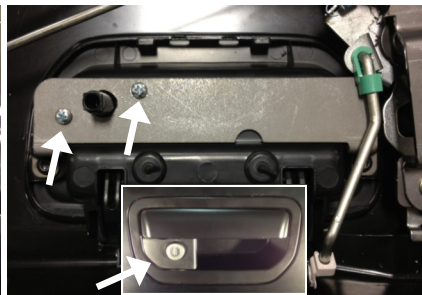
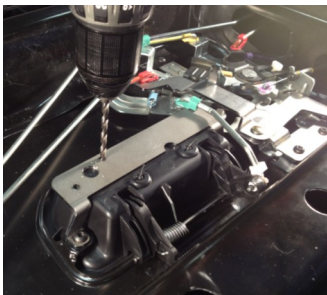
### Manual Lock Install



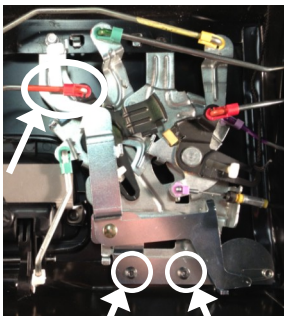
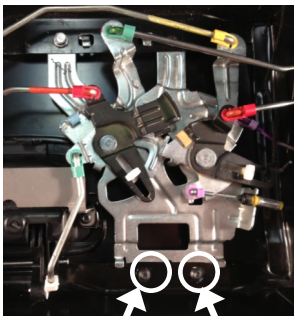
**STEP 1** - Lower the tailgate. Remove the four Phillips head screws from the top trim, slide the trim to the right (passenger) side using a rubber mallet and lift to remove it. Apply downward pressure on the top trim if it bows up. Remove the white clips that remain on the tailgate by turning them 45 degrees to pull out. **NOTE THE ORIENTATION BEFORE REMOVAL.** Remove the T40 torx screws holding the interior trim panel and lift it off.



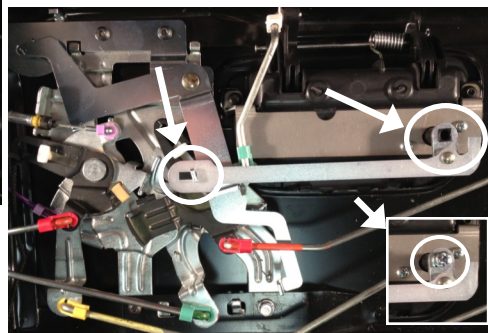
**STEP 2** - Remove the handle rod from mechanicals by turning the green rod clip and pulling the rod out of the clip. Swing the rod up and out of the way. Remove the two screws holding the factory handle in place; there are tabs that will hold the handle from falling out of the tailgate, but for extra assurance hold the handle in place so not let the handle to fall. Install the mounting bracket over the back side of handle and reinstall the two screws and tighten. Reinstall the handle rod. The handle should now look like picture.



**STEP 3** - Using the bracket holes as a template drill the two 3/16" (or 5mm) holes and one 1/2" (or 12mm) hole. Insert the lock assembly from the front of the bezel inserting the shaft through the 1/2" hole and aligning the two mounting holes on the bezel with the mounting bracket. Insert the 2 supplied 8-32 x 1 1/2" screws through the mounting bracket in to the bezel. Tighten the screws. **DO NOT OVER TIGHTEN. IF LOCK ASSEMBLY BINDS LOOSEN SCREWS UNTIL THE KEY MOVES FREELY!**



**STEP 4** - Remove the two mechanical assemble screws. Mount the Pop N Lock bolt linkage under the upper latch rod as shown using the existing two mechanical assemble screws. The lock assembly should look like picture.



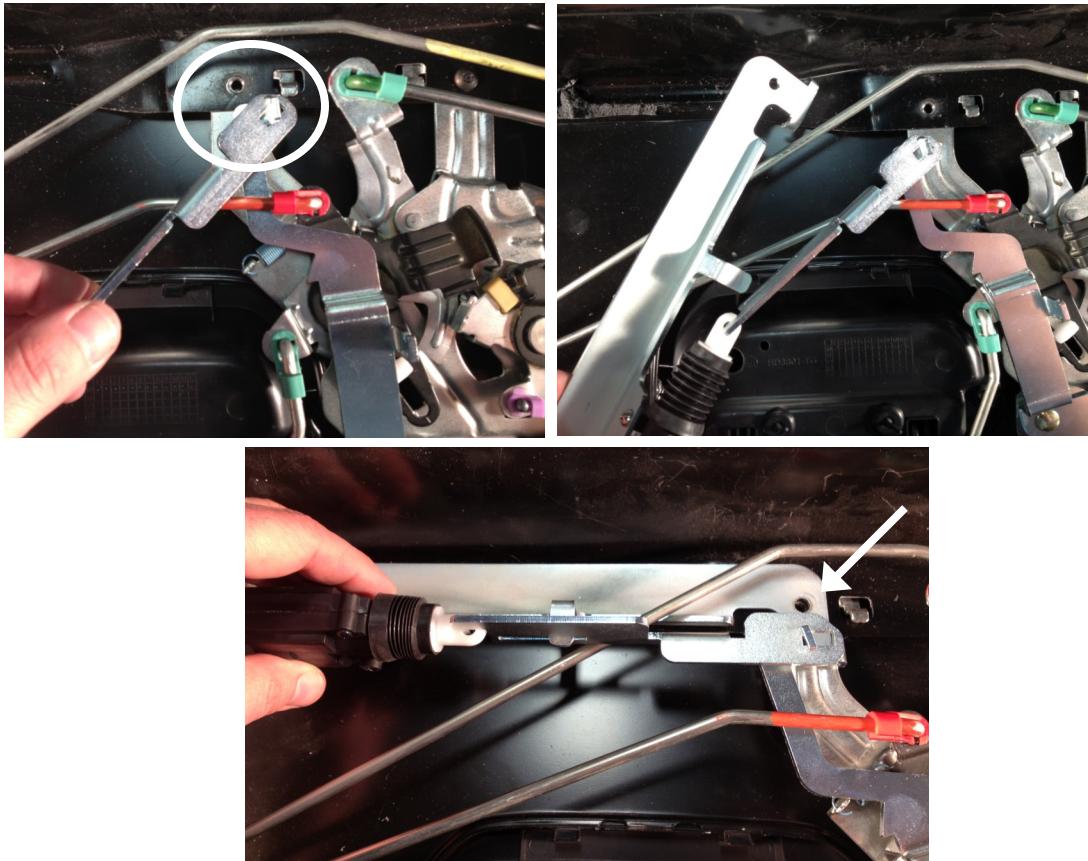
**STEP 5** - Install the crank rod assembly by hooking the slotted end onto the bolt linkage and the square hole to the end of the lock assembly shaft. Insert the 1/4" x 20 x 2" screw into the shaft and tighten.

**STEP 6** - Check the functioning of the lock.

**Lock**-Turn the key to the right (passenger side) to the two o'clock position and then then back to 12 o'clock to lock.

**Unlock**-Turning the key to the left (driver side) to the ten o'clock position and then then back to 12 o'clock to unlock.

## Power Lock Install



**STEP 7** - Remove the driver side lower mechanical assembly screw. Hook the end of the slide bolt onto the t-post of the lock bolt linkage and turn to position shown in the picture to the upper left. Hook the white plastic hook of the actuator onto the slide bolt and rock the actuator into place making sure the bolt end goes under and the slide bolt goes above the latch rod as shown in the picture to the upper right and lower center. Reinstall the driver side lower mechanical assembly screw and tighten. Gently slide the slide bolt to the lock and unlock position to verify function of lock.

**STEP 8 - Wiring (there are other ways to run the wiring this is one way)** - Snake the short wiring cable up the tailgate through the driver side drain hole and connect it to the bullet connectors of the power unit. Secure with cable ties to prevent the wire from getting pinched or in the way of the latch rods. Connect the other end to the long wiring cable. Locate this connector under the truck so that it is accessible for tailgate removal. Run the long wiring cable along the factory wire harness to the engine compartment securing it with cable ties. Snake it into the driver's compartment using the rubber grommet in the firewall that the factory wire harness run through from the fuse box. Remove the driver side kick panel and run the wire down into the driver side kick panel. The lock and unlock wires are located in the fuse box under the kick panel. The yellow with a black stripe (lock) and the yellow with a green stripe (unlock) wires are in the small green plug that is located at the bottom front side of the fuse box. Use the two blue wire taps to connect to these two wires. Connect the male terminal ends of the long wire harness to the blue tap connectors. Test the operation of the lock (if the tailgate lock works in the opposite direction as the door locks un connect the male terminal and switch the wires that they were plugged into). Secure all the wiring and replace the kick panel.

**STEP 9** - Replace the interior trim panel of the tailgate using the torx screws removed in Step 1. Replace the white top trim clips onto the tailgate, making sure they are oriented as noted in Step 1. Carefully locate the top trim over the clips and press it firmly into place. You will hear and feel them snap into place. Adjust the position of the top rim once again using a rubber mallet. Reinstall the four Phillips Head screws.