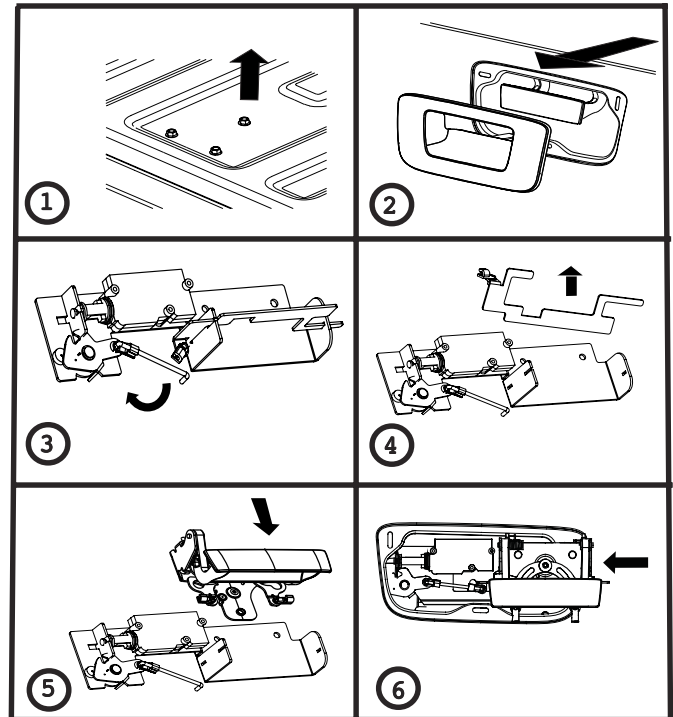
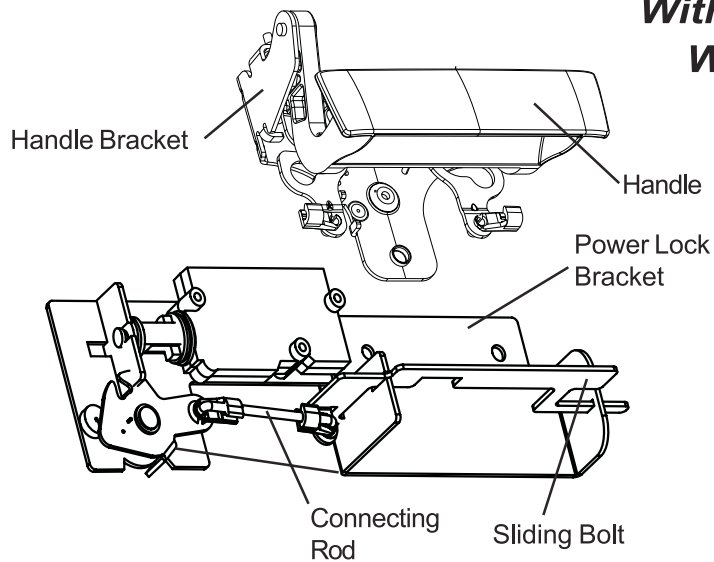


# POWER TAILGATE LOCK

# Instructions

**PL8120Q , Chevy Siverado, GMC Sierra, '07 and up  
With or Without Factory Tailgate Lock  
Works with Factory Back Up Camera**



## Parts Included

Power Lock  
Short Wiring Cable  
Long Wiring Cable  
Relay Wiring Cable  
Blue Connector Tabs  
Cable Ties

## Tools Required

10 and 14 MM Sockethead,  
Philips Head Screwdriver  
Pliers

## Power Lock Installation

1. Lower the tailgate and remove the three mounting bolts holding the handle in place. Fig. 1
2. Pry the bezel off. Set aside. Fig.2 Unclip the control rods and take the Handle Bracket out of the tailgate.
3. Unclip one of the Connecting Rod Clips of the Power Lock. Fig. 3
4. Remove the Sliding Bolt. Fig 4.
5. Slide the Handle Bracket over Power Lock Bracket so that the two mounting holes match on both brackets. Fig. 5. Once the two brackets are lined up, re-insert the Sliding Bolt and re-attach the Connecting Rod. Set them aside.
6. Take the short wire harness and tape the end with the two bullet connectors to the end of 1/4 diameter 3 foot long wooden dowel (or a coat hanger).
7. Insert the dowel into the handle opening. Push the rod down at a 45 degree slant until you locate an opening in the bottom of the tailgate on the passenger's side. Close the tailgate part way and push the harness through the hole and remove the tape.
8. Connect the wire harness to the Power Lock. Make sure the power lock is in its lock position. The connecting rod should be extended as in Fig. 6. Hold the Handle Bracket and the Power Lock together and slide them, Actuator first, into the driver's side of the tailgate until the Handle is centered. Fig. 6
9. Re-attach both rods to the Scissor Links with the Rod Clips and mount the three bolts holding the handle in place. Fig 1..

# POWER TAILGATE LOCK

## Wiring Instructions

PL8120Q - Chevy Siverado, GMC Sierra, '07 and up

### STEP 1: Connecting Relay Harness

Start by attaching the relay harness to the battery (FIG1). Connect the fused lead to the positive terminal and the other lead to the negative terminal.



### STEP 2: Testing The Unit

**2 Door Models** -Attach the two blue wire taps to the grey wire and the tan wire located in the driver's side fuse panel. (FIG 2)

**4 Door Models** - Attach the two blue wire taps to the grey wire and the tan wire located in the driver's side step plate. They are located in the smaller of the two wire bundles.

Attach the long wires of the relay harness to the wire clips and the short wire of the relay harness to the long extension harness. Do this without fishing the wires through the dash. Connect the long extension harness the short extension harness. Connect the short extension harness to the tailgate lock. Toggle your door locks to test the system. If the solenoid fails to function, check all connections and re-test.



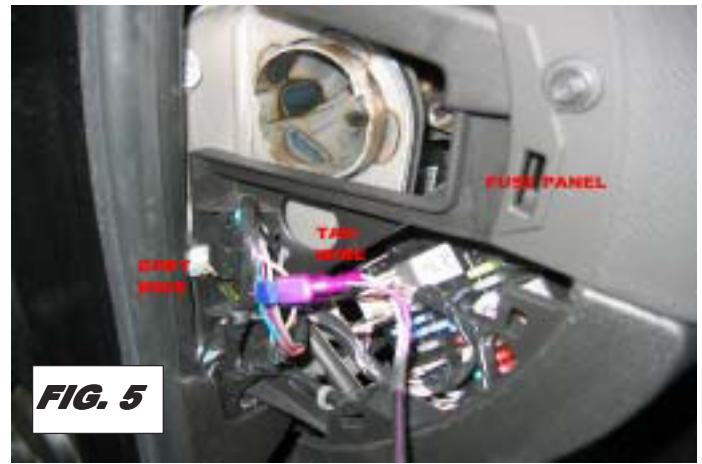
### STEP 3: Running the wires.

After testing the unit, now run the wires. Using the tie wraps provided, attach the relay harness securely to the truck, along the sill, keeping wires away from any engine parts. (FIG3) From the bottom, fish up the end of the long extension harness and attach it to the relay harness. From inside the cab, under the steering column, push a rigid fish wire through the large grommet in the firewall. Inside the engine compartment, make a small slice in the boot for the wires where your wire pokes through from the cab. Attach the relay harness long wire to your fish and, from inside the cab, pull the wire through the grommet and fish it up towards the fuse panel.(FIG 4 & FIG 5)



### ***STEP 3: Wires - continued***

Once you have the long relay harness lead into the cab, fish it through into the fuse box area and connect it to the blue wire taps. (FIG5) Run the long extension harness along the frame of the truck towards the back, using the tie wraps to hold it away from exhaust parts and prevent it from hanging. Angle towards the passenger side.



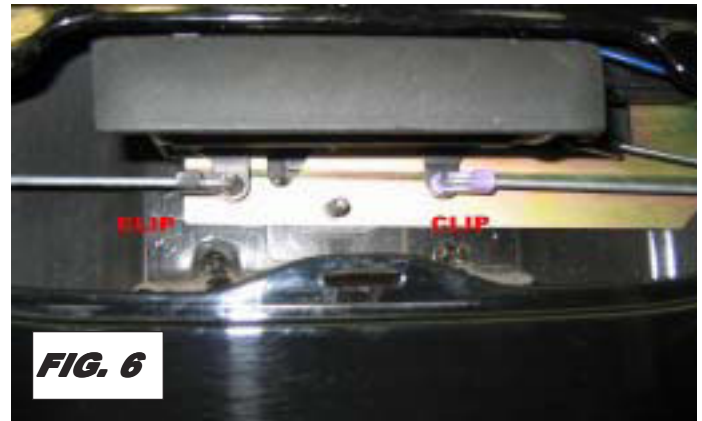
**FIG. 5**

### ***STEP 4: Mechanical***

**PL8120 only.**

**For PL8130 see separate sheet.**

Lower the tailgate and remove the three 14mm bolts from the back. Close the tailgate and remove the bezel. Unclip the rods from the handle and remove the handle from the tailgate. Mount the Power Lock to the handle. Reinstall the handle and the replace all bolts. Clip the rods in place.(FIG 6) Leave the bezel off for now.



**FIG. 6**

### ***STEP 5: Finishing***

Once the unit is in place in the tailgate, fish the short harness through the drain hole along the bottom of the tailgate on the passenger's side. (FIG 7) Connect the short harness to the long harness. Connect the short harness to the Power Lock. Test the system by toggling the remote. If the door locks and Power Lock are out of phase, switch the wires at the tailgate. Replace the bezel.



**FIG. 7**

## LIMITED WARRANTY TERMS AND CONDITIONS

- (1) **Installation.** Pop & Lock™, LLC (and Pop & Lock™ Corporation) is not responsible for installing the Pop & Lock™ or for the harm suffered by any person as a result installing it.
- (2) **Warranties.**
- a. Customer acknowledges that it is unreasonable to believe that any device whatever will prevent a theft in the case of every attempt and that the most that can be expected from a so-called anti-theft or security device is that it will deter many thieves.
  - b. **POP & LOCK™ LLC. (and Pop & Lock™ Corporation) MAKES, AND CUSTOMER RECEIVES, NO WARRANTY, EXPRESSED OR IMPLIED, EXCEPT THE WARRANTIES OF TITLE TO THE POP & LOCK™ AND THEIR MERCHANTABILITY, PARTICULARLY NO WARRANTY OF FITNESS FOR A PARTICULAR USE OR PURPOSE OR AGAINST INFRINGEMENT.**
  - c. As Customer's only remedy, Pop & Lock™, LLC (and Pop & Lock™ Corporation) will repair or replace, at its option and without charge, any lock that is defective in material or workmanship when received by Customer and is returned to Pop & Lock™ LLC (and Pop & Lock™ Corporation), FOB Pop & Lock™ Corporation's offices, within one (1) year after it's receipt by the Customer. Pop & Lock LLC will ship all replacement, or repaired, Locks to Customer, FOB Pop & Lock™'s shipping point.
  - d. Factory support is only available for Pop & Lock™ products purchased as **new** through an Authorized Pop & Lock™ dealer.  
***Please Note: Pop & Lock™ Products purchased on auction sites such as Ebay, Amazon and Craigslist, to name a few, will not be covered under factory warranty under any circumstance. Pop & Lock™, LLC (and Pop & Lock™ Corporation) is unable to verify whether products sold through Auction Sites are new, used, or refurbished, and as such, Pop & Lock, LLC (and Pop & Lock™ Corporation) is unable to warranty such purchases. Pop & Lock, LLC advises using extreme caution when buying through auction sites as you'll be doing so at your own risk.***
- (3) **No Liability.** Pop & Lock™ Corporation is not liable for any loss or damage claimed by Customer or any third person to have been suffered or incurred as a result or, or related to, the Locks purchased under this Agreement, regardless of the circumstances or form of action, except any bodily injury or death for which Pop & Lock™ is liable under products-liability law. Without limiting the generality of the foregoing, in no event will Pop & Lock™ LLC be liable to Customer for any indirect, special, or consequential damages, regardless of the circumstances or the cause of action, particularly not for the value of a vehicle, or any other money damages in the event that a tailgate is stolen either notwithstanding the use of a Pop & Lock™ or when it has been returned for repair or replacement.