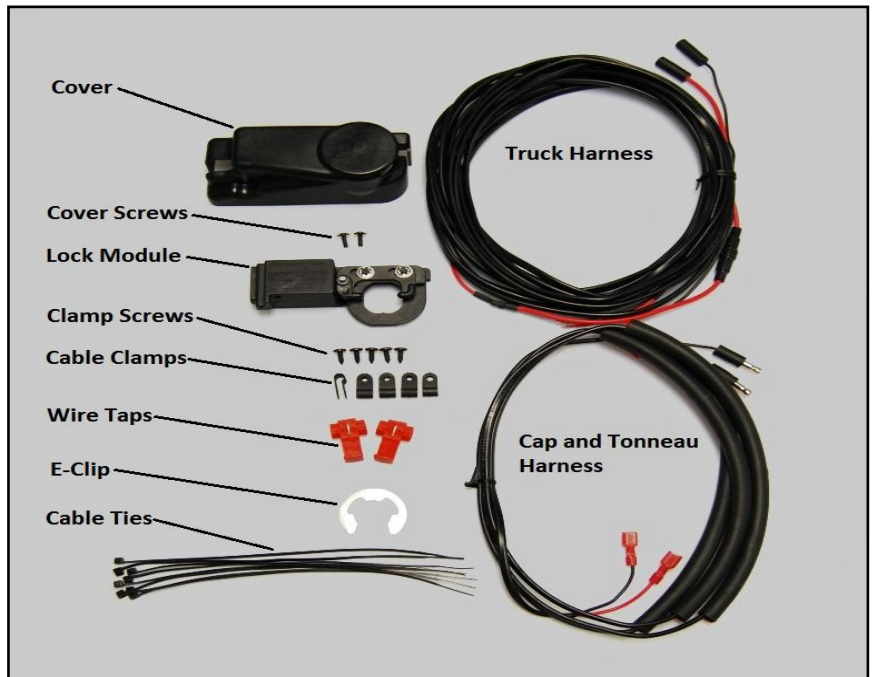
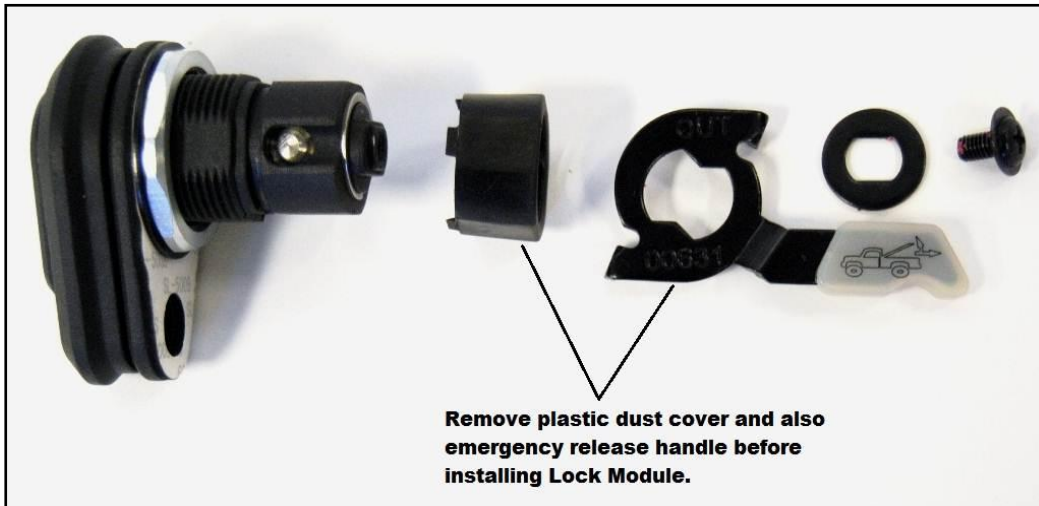


POP & LOCK®

PL9555 (and PL9772) Power Lock Installation Instructions



- 1) Locate and remove the Emergency Release Handle with Phillips screw.

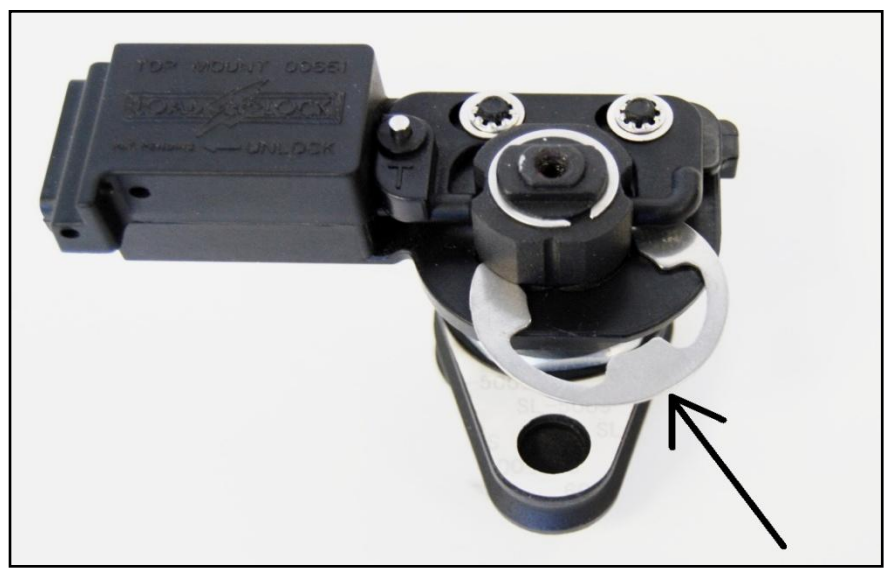
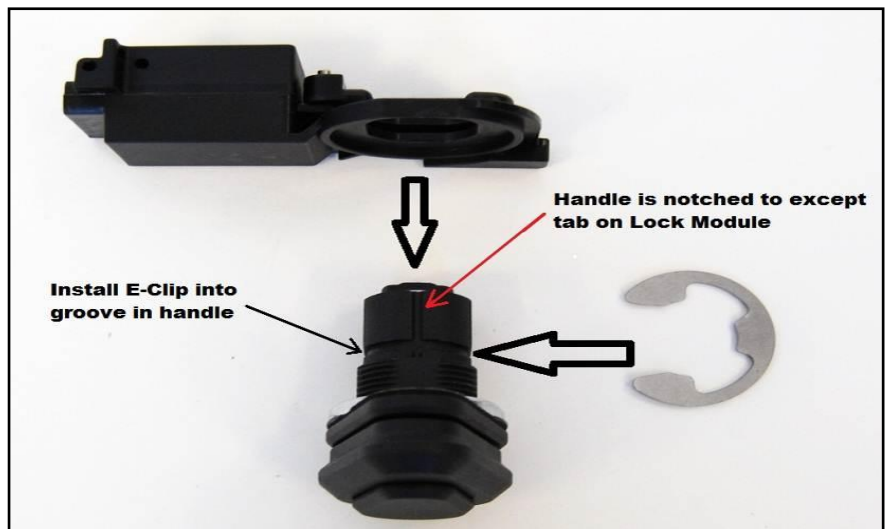


- 2) Locate and remove the black plastic Dust Cover if one is installed. May need to cut it off if necessary.

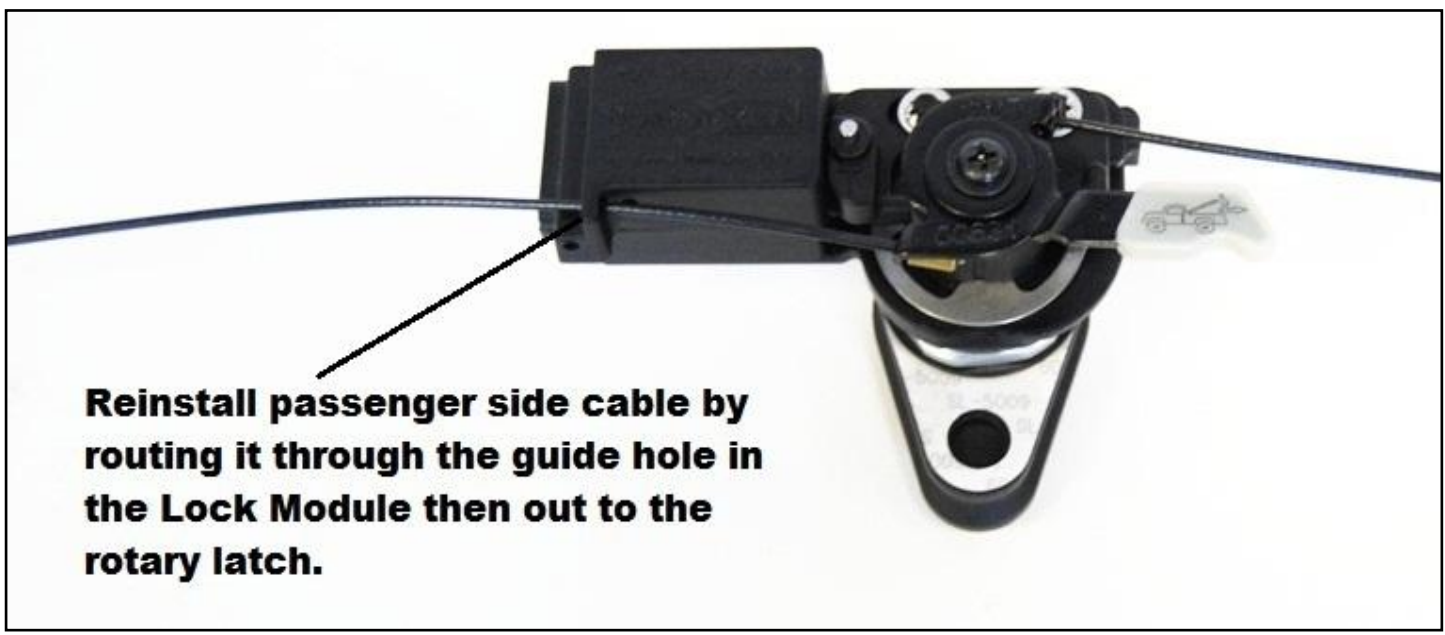
- 3) Install the Lock Module by sliding it over the handle, be sure the mounting tab is at the bottom and lines up with the notch in the handle when sliding it on.



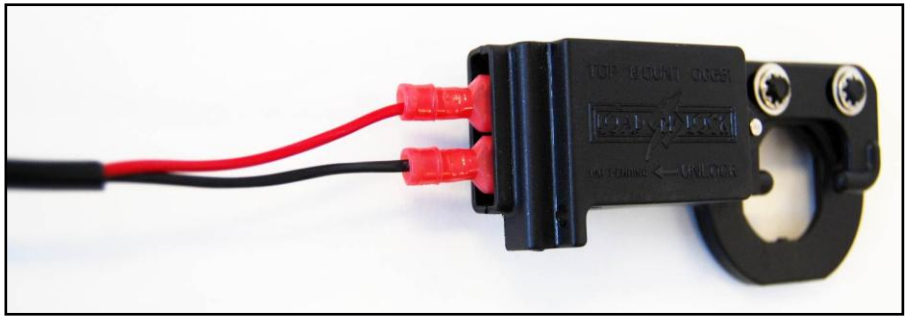
4) Install the Stainless Steel E-clip into the groove in the handle to hold the Lock Module in place.



5) Reinstall the Emergency Handle and cables to the rotary latch, route the passenger side cable through the cable guide hole on the Lock Module the out to the rotary latch.



6) Install the Cap and Tonneau Harness; insert the red female spade ends of the harness into the Lock Module with the red wire on top.



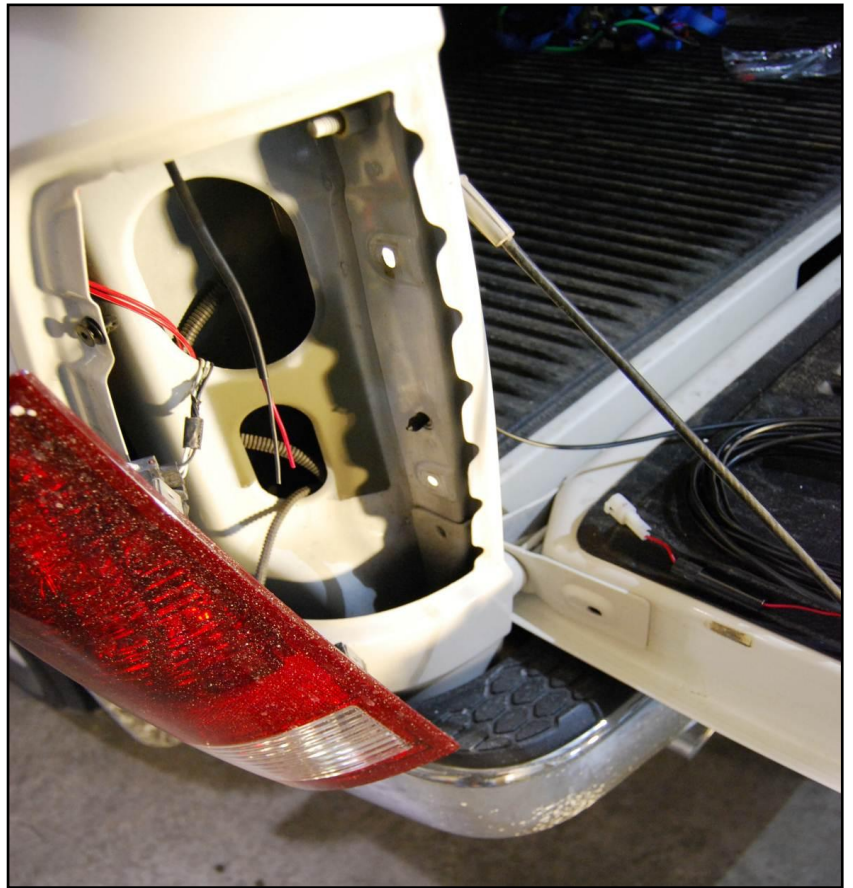
7) For Cap installations fasten the Cap Harness to the rear door glass using supplied adhesive backed foam tubes installed on the harness. Be sure that the glass is clean and dry then remove the adhesive backing and stick it to the glass. Route the harness down along the bottom and over to the driver's side of the door then up to the top corner making sure that it stays in the blacked out area of the glass when possible. Leave a small loop at the top to allow the door to fully open then route the harness down the inside of the door frame using supplied Cable Clamps and Clamp Screws.



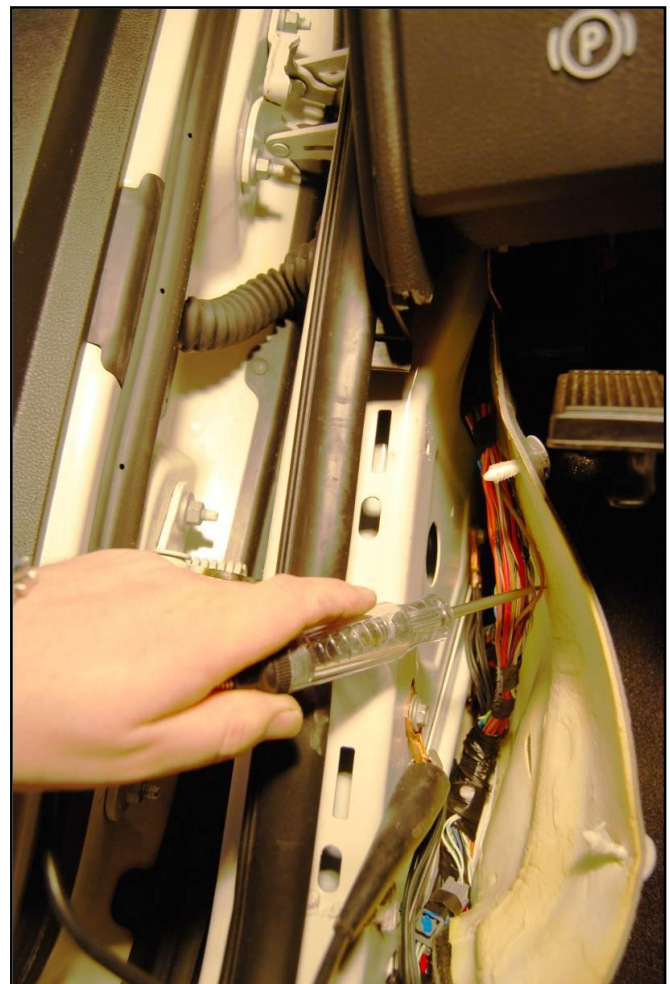
8) For Tonneau installations route the Tonneau Harness from the Lock Module over to the driver's side Gas Prop or Lift Arm using supplied Cable Clamps and Clamp Screws (be sure not to screw into a thin portion of the tonneau or the screws could penetrate the outer surface). Fasten the Tonneau harness down the gas prop or lift arm using the supplied foam tubes with adhesive backing, be sure the surface is clean and dry before applying the foam tubes. Install black cover with the two supplied screws, one on the driver side and one in the bottom.



9) Install the Truck Harness by removing the driver's side tail light then running the non fused end of the harness up under the bed rail, through the back of the tail light compartment, down to the truck frame following the factory wiring harness to the front of the truck. Run the harness up from the frame, through the firewall and into the driver's side kick panel. Fasten the harness to the truck securely using the supplied Cable Ties as needed.



10) Using the supplied Vehicle Wiring Chart locate your make and model to determine which two wires to tie into. Confirm the wires with a test light by grounding the test light, probing each wire and push lock and unlock on the driver's side door. The lock wire should light the test light when lock is pushed on the door lock switch and the unlock wire should light the test light when unlock is pushed on the door lock switch. On most models you can also locate the lock and unlock wire in the rubber boot that runs in between the driver's side door and the cab of the truck, slide the boot back from the truck and test the wires. Once the wires are located tap the red wire to the lock wire and the black wire to the unlock wire using supplied red Wire Taps. Test the lock, if the lock works opposite of the truck switch the red and black wires around, this will change the polarity.



VEHICLE WIRING CHART

Pop N Lock/ Load N Lock

(All wire color information is for reference only and may vary by vehicle)

Please verify with a test light

If you have trouble locating the lock and unlock wires, test all the wires with a test light that are inside the rubber boot that runs between the door and the cab of the truck to find correct wire colors.

MAKE	MODEL	YEARS	WIRE COLOR		WIRE LOCATION (*Note 1)
			LOCK	UNLOCK	
Chevy/GMC	Silverado/Sierra	99-02	Tan	Gray	Driver Side Kick Panel Or Just Below Driver Side Fuse Block
Chevy/GMC	Silverado/Sierra S-10/Sonoma Colorado/Canyon	03-06	Tan	Gray	Driver Side Door Between Switch and Lock Actuator (*Note 2)
Chevy/GMC	Silverado/Sierra S-10/Sonoma Colorado/Canyon	07+	Tan	Blue	Driver Side Door Between Switch and Lock Actuator (*Note 2)
Chevy/GMC Crew Cab	Silverado/Sierra S-10/Sonoma Colorado/Canyon	03+	Tan	Gray	Under the sill plate in the wiring harness that goes under the driver's side seat.
Chevy/GMC	Full Size	88-98	Tan	Gray	Driver Side Kick Panel
Chevy/GMC	S-10	94-02	Tan	Gray	Driver Side Kick Panel
Ford	Sport Trac	01-06	Pink	Pink/Black	Passenger Kick Panel (*Note 5)
Ford	Sport Trac	07+	Gray/Brown	Purple/Gray	Passenger Kick Panel (*Note 5)
Ford	F-150 / F-250 / F-350	97-03	Red/Green	Pink/Orange or Red/Orange	Above Steering Column or Driver Side Kick Panel (*Note 5)
Ford	F-150 / F-250 / F-350	04-07	Pink/Black	Pink/Orange or Red/Orange	Above Steering Column or Drivers Side Kick Panel (*Note 5)
Ford	F-150/F-250/F-350	08	Gray or Gray/Tan	Purple or Purple/Gray	Above Steering Column or Drivers Side Kick Panel (*Note 5)
Ford	F-150/F-250/F-350	09+	Gray/Brown	Purple/gray or Lt. Blue/Lt Green	Above Steering Column or Drivers Side Kick Panel (*Note 5)
Ford Crew Cab	F-150/F-250/F-350	09+	Gray/Brown	Purple/gray or Lt. Blue/Lt Green	Drivers side Sill Plate (*Note 8)
Ford	Ranger	99-07	Pink/Black	Pink/Orange	Passenger Side Kick Panel (*Note 5)
Ford	Ranger	08+	Blue/Green or White/Purple	Gray/Black or Gray/Purple	Passenger Side Kick Panel (*Note 5)
Dodge	Dakota	97-04	Orange/Black	Blue	Driver Side Kick Panel (*Note 5)
Dodge	Dakota	05+	Lt .Green/Blue	Purple/Black	Driver Side Kick Panel Or Passenger Side Kick Panel (*Note 5)
Dodge	Ram 1500	94-03	Tan/Pink	Blue	Driver Side Kick Panel (*Note 5)
Dodge	Ram 1500/2500 3500	04-08	Brown/Orange or Tan/Green	Lime Green	Driver Side Kick Panel (*Note 5)
Dodge	Ram 1500/2500 3500	09+	Orange/Gray or Tan/Green	Lime Green or Tan/White	Driver Side Kick Panel (*Note 5)
Dodge	Ram 2500 / 3500	94-03	Orange/Black	Pink/Violet	Driver Side Kick Panel (*Note 5)
Honda	Ridgeline	06+	Yellow/black	Yellow/green	Driver's Side Kick Panel(*Note 6 & 9)
Mazda	B-Series	99+	Pink/Black	Pink/Orange	Passenger Side Kick Panel (*Note 5 & 9)
Nissan	Titan	04+	Brown or Green/Yellow	Green/Red or Purple	Driver Side Kick Panel (*Note 5 & 9)
Nissan	Frontier	95-04	Brown	Green/Red	Driver Side Kick Panel (*Note 5 & 9)
Nissan	Frontier	05+	Purple	Green	Driver Side Kick Panel (*Note 5 & 9)
Toyota	Tacoma/Regular cab Access cab	98-06	Blue	Blue/White	Driver Side Kick Panel(*Note 4 & 9)
Toyota	Tacoma/Double cab	98-06	Blue/Pink	Blue	Driver Side Kick Panel(*Note 4 & 9)
Toyota	Tacoma/Double cab Access Cab	07+	Blue/Black	Blue/Red	Driver Side Kick Panel(*Note 7 & 9)
Toyota	Tundra	99-03	Pink/Black	Red/Orange	Driver Side Kick Panel (*Note 5 & 9)
Toyota	Tundra	04+	Pink/Black or Blue/White	Red/Orange or Black/Yellow	Driver Side Kick Panel(*Note 3 & 9)
Toyota	Tundra/Crew Max Double Cab	07+	White	Blue	Diver Side Kick Panel –Top Blue Plug (*Note 5 & 9)
Toyota	Tundra/Double cab	04+	Blue/Red	Blue/Black	Diver Side Kick Panel (*Note 5 & 9)

*See Notes following page



VEHICLE WIRING CHART

Pop N Lock/ Load N Lock

(All wire color information is for reference only and may vary by vehicle)

Please verify with a test light

If you have trouble locating the lock and unlock wires, test all the wires with a test light that are inside the rubber boot that runs between the door and the cab of the truck to find correct wire colors.

To Test With a Test Light: Ground the test light to good conducting ground and probe the wire to be tested by piercing the wire case to connect to the copper wire inside. Hit the lock button to see if the test light lights up. If so this is the lock wire. Do the same with the unlock wire to verify the correct wire.

Note 1:

If the wiring is connected in the driver's side kick panel, the Handle will lock/unlock with the driver's door. If you prefer the Handle to lock/unlock with the passenger door, on some models the wiring may be connected into the passenger side kick panel using the same color wiring. If the same colors can't be found, use a test light to find the passenger side colors.

Note 2:

On the CHEVY/GMC 03+ Two door or Extended Cab Models (if not using a relay harness) it is necessary to remove the driver's side door panel and attach the lock and unlock wires directly to the wires of the door lock actuator inside the door.

Once the door panel is removed, you will need to remove the driver's side kick panel and fish the harness wires through the rubber boot that runs between the door and the cab of the truck and into the door. Use the supplied Wire Taps to attach to the specified wires directly under the truck's door lock switch and test the locks. If the truck locks operate opposite the lid lock, reverse the leads connected.

Note 3:

Some 04 Toyota Tundra models used blue/white instead of pink/black for the lock wire and black/yellow instead of red/orange for the unlock wire.

Note 4:

Make sure the key is out of the ignition when testing this model; as the doors will automatically unlock when trying to lock.

Note 5:

If you have trouble locating the lock and unlock wires, test all the wires that are inside the rubber boot that runs between the door and the cab of the truck. Once you locate them you can follow them to a location that makes tapping to the wires easier. This works on most models except 03+ G.M.

Note 6:

On the Honda Ridgeline the lock and unlock wires are located in the fuse panel down by the driver's side kick panel. The yellow/black(lock) and the yellow/green(unlock) wires are in the small green plug that is located at the bottom front side of the fuse box. A small hole may need to be drilled in the side of the bed rail near the top rear on the driver's side of the bed to access the rear tail light compartment to attach the brake light and power lock wiring.

Note 7:

On the 07+ Double Cab Tacoma the lock wire is located in the 10 pin plug, pin#9, Blue/Black wire. The unlock wire is located in the 12 pin plug, pin#10, Blue/Red wire; both plugs are hanging loose in the driver side kick panel.

Note 8:

On the Ford 09+ crew cabs the lock/unlock wires are located under the drivers side sill plate (the plate you step on when getting in and out of the truck). The wires run from the driver's side front door to the driver's side rear door. Gray/Brown for Lock and Purple/Gray for unlock, there are multiple and different size purple /gray wires – use the largest gauge.

Note 9:

On some models the factory keyless system may be programmed to re-lock the truck doors after 1 or 5 minutes if the truck is unlocked and the door are not physically opened. Please refer to the user's manual or contact your local dealer if you require a change to the factory programming.

