



## POWER TAILGATE LOCK INSTRUCTIONS

Model **PL8540**  
2005-2015 Toyota Tacoma Smart  
Lock Combo with BOLT® Lock

**Package Contents:** Power Lock Assembly, 2 Wire Taps  
Handle Assembly, 8 Cable Ties  
Instructions

**Tools Required:** T30 Torx (Star) Bit/Driver  
10mm Wrench

**Step 1:** Remove the T30 torx (star) screws from the inside of the tailgate that hold the access panel in place. Remove the access panel by lifting the bottom and sliding it out of the top plastic trim piece. You may have to lift the trim piece up away from the tailgate in the middle to allow the access panel down to slide down.

**Step 2:** Remove the latch rods from the plastic clips (1). Do this by turning the clips off of the rod and lift the rod out of the clip.

-If truck has a back up camera, remove the two 10mm bolts (2) that hold the camera and holder onto the OEM handle.

-Remove the two 10mm bolts (3) that hold the handle into the tailgate. Hold the handle in place to prevent the handle from falling out.

-Push the two plastic tabs of the gasket in towards the handle past the sheet metal and remove the handle from the tailgate.

**Step 3:** The left (**DRIVER SIDE**) latch rod needs to be **flipped end for end** in order to allow for the lock assembly. Do this by popping the latch rod out of the black clip, which is located at the center of the rod. Push the rod towards the bottom of the tailgate to pop it out of clip. Next remove the rod from the driver side latch. This latch clip is towards the driver side of the tailgate under the sheet metal inside the tailgate. This clip is the same type as the ones on the handle. Turn the clip off of the rod and lift the rod out of the clip. Flip the rod **end for end** so the bent part of the rod is closer to the driver side latch. The rod will run along the top part of the tailgate as shown in the picture. Insert the rod end into the latch clip and snap the clip onto the rod.

*(The rod will not get clipped back into the center black clip)*

**Step 4:** Remove the plastic gasket by pulling it off the OEM handle and reinstall it onto the Pop and Lock handle ensuring it is seated on the 3 plastic posts.

-Install the Pop and Lock handle into the tailgate. Start by verifying that the black plastic toggle on the back of the pop and lock is pushed to the unlock position and the metal rod clip plate is rotated fully clockwise (as shown in the bottom picture). *You may have to hold the plate rotated as you install the handle.* Put the bottom of the handle into the tailgate first then rock the top of the handle into the tailgate. The tabs on the gasket should snap past the sheet metal. (Hold the handle in place to prevent the handle from falling out).

-Install the power lock bracket. You will have to rock the bottom of the handle up to allow for the power bracket to slide underneath. The plastic toggle post should align in the slot of the power bracket as shown in the picture. (top of next page)

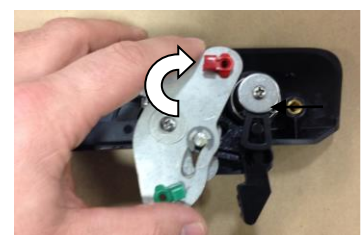
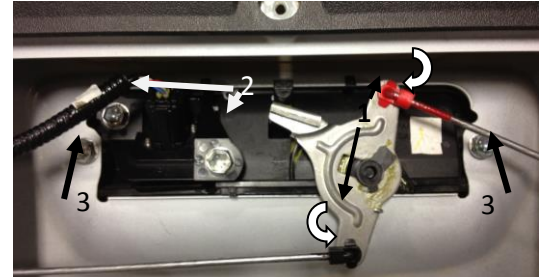
-Install the two 10mm bolts that fasten the handle to the tailgate.

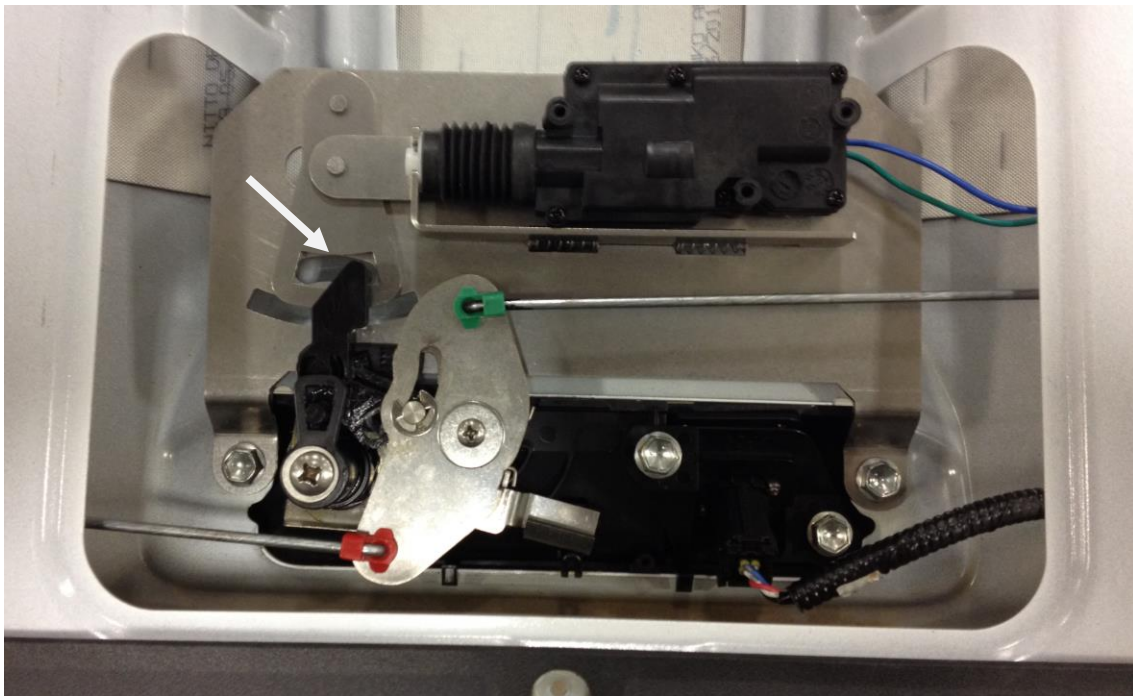
-If truck has backup camera, remove the camera cover from the PL5500 by pushing in on the 2 snap tabs and popping the cover off of the handle. Position camera on the handle and install the two 10mm bolts to fasten camera.

-Install the rods into the clips and turn the clips till they snap onto the rods.

(Do not install the access panel back onto the truck yet)

The handle and power lock assembly should look like the picture at the top of the next page. You should be able to manually move everything to the lock and unlock position.





### Step 5: Wiring (there are multiple ways to run the wiring this is one suggestion)

Route the bullet connector side of the short wiring harness through one of the drain holes at the bottom of the tailgate up to the power lock assembly. Connect it to the bullet connectors of the power unit. Secure the wire with cable ties to prevent the wire from getting pinched or in the way of the latch rods. Connect the other end to the long wire harness. Locate this connector under the truck so that it is accessible for tailgate removal. Run the long wiring cable along the factory wire harness to under the cab and secure with cable ties. For 2-Door and Access cab models the wire will be tied into either side kick panel (the plastic cover next to where your feet go). For 4-Door models the wire can be tied into either side front step plate (the plastic trim along the floor as you step into the truck). Run the wire into the cab using one of the factory's rubber grommets in either the firewall or along the floor pan. Cut a small slit in the grommet or run the wire next to the grommet to allow the wire to pass through. *It is recommended to seal around wire to prevent moisture from entering the cab.* Run the wire out of view and to the place where it is going to get connected. For 2005 and 2006 2-Door models locate the **blue and blue with a white stripe wire**. For 2005 and 2006 4-Door models locate the **blue and blue with pink stripe wire**. For 2007 and up all models locate the **Blue with a black stripe and the blue with light red stripe wire**. Use the supplied wire taps to connect to these two wires. At this point it doesn't matter which wire is tapped to the OEM wires. Test the operation of the lock (if the tailgate lock works opposite of the door locks, disconnect the two bullet connectors back by the power lock assembly, switch the leads of the wires, and reconnect the bullet connectors. This will make the lock the same as the doors). Secure all the wiring and replace the removed trim pieces.

### Step 6: - Code the lock to the truck key. **CAUTION: the lock can only be coded once.**

**Only insert key intended for everyday use.**

1. Remove protective label from lock face.
2. **FULLY INSERT THE KEY** intended for everyday use.
3. **Rotate key clockwise** until it stops **while maintaining full key insertion**. Lock is now fully coded and ready for everyday use.
4. Test lock for proper operation. Turn the key clockwise and back to center to lock. Turn the key counter clock wise and back to center to unlock.

**Step 7:** If the lock operates properly, reinstall the access panel.