

<b>Package Contents:</b> Handle Assembly Instructions
--

<b>Tools Required:</b> T30 Torx (Star) Bit/Driver 10mm Wrench
--

**Step 1:** Remove the T30 torx (star) screws from the inside of the tailgate that hold the access panel in place. Remove the access panel by lifting the bottom and sliding it out of the top plastic trim piece. You may have to lift the trim piece up away from the tailgate in the middle to allow the access panel down to slide down.

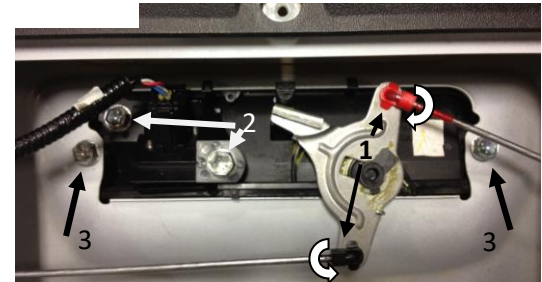


**Step 2:** Remove the latch rods from the plastic clips (1). Do this by turning the clips off of the rod and lift the rod out of the clip.

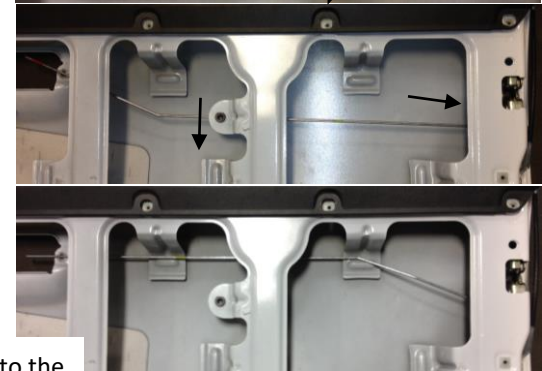
-If truck has a back up camera, remove the two 10mm bolts (2) that hold the camera and holder onto the OEM handle.

-Remove the two 10mm bolts (3) that hold the handle into the tailgate. Hold the handle in place to prevent the handle from falling out.

-Push the two plastic tabs of the gasket in towards the handle past the sheet metal and remove the handle from the tailgate.



**Step 3: \*\*\* THE LEFT DRIVER'S SIDE LATCH ROD NEEDS TO BE FLIPPED END FOR END\*\*\*** in order to allow for the lock assembly. (The Handle Assembly may work without flipping latch rod, but it may lead to premature failure.) Do this by popping the latch rod out of the black clip, which is located at the center of the rod. Push the rod towards the bottom of the tailgate to pop it out of clip. Next remove the rod from the driver side latch. This latch clip is towards the driver side of the tailgate under the sheet metal inside the tailgate. This clip is the same type as the ones on the handle. Turn the clip off of the rod and lift the rod out of the clip. Flip the rod **end for end** so the bent part of the rod is closer to the driver side latch. The rod will run along the top part of the tailgate as shown in the picture.



**Step 4:** Remove the plastic gasket by pulling it off the OEM handle and reinstall it onto the Pop and Lock handle ensuring it is seated on the 3 plastic posts.

-Install the Pop and Lock handle into the tailgate. Start by verifying that the black plastic toggle on the back of the pop and lock is pushed to the unlock position and the metal rod clip plate is rotated fully clockwise (as shown in the bottom picture). *You may have to hold the plate rotated as you install the handle.* Put the bottom of the handle into the tailgate first then rock the top of the handle into the tailgate. The tabs on the gasket should snap past the sheet metal. (Hold the handle in place to prevent the handle from falling out).

-Install the two 10mm bolts that fasten the handle to the tailgate.

-If truck has backup camera, remove the camera cover from the PL5400 by pushing in on the 2 snap tabs and popping the cover off of the handle. Position camera on the handle. If the metal rod from the handle interferes, slide the rod back out of the way. Install the two 10mm bolts to fasten camera.

-Install the rods into the clips and turn the clips till they snap onto the rods.

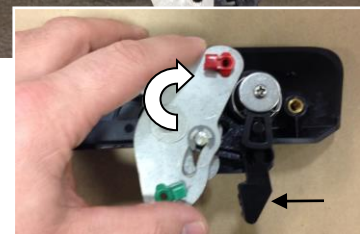
(Do not install the access panel back onto the truck yet)



**Step 5:** - Code the lock to the truck key. **CAUTION: the lock can only be coded once.**

**Only insert key intended for everyday use.**

1. Remove protective label from lock face.
2. **FULLY INSERT THE KEY** intended for everyday use.
3. **Rotate key clockwise** until it stops **while maintaining full key insertion**. Lock is now fully coded and ready for everyday use.
4. Test lock for proper operation. Turn the key clockwise and back to center to lock. Turn the key counter clock wise and back to center to unlock.



**Step 6:** If the lock operates properly, reinstall the access panel.