

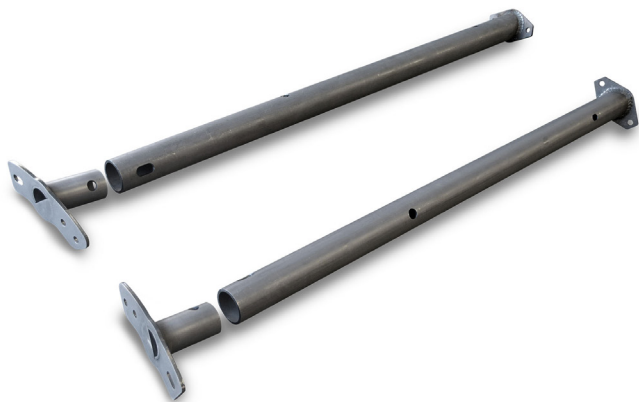


## TJ Heavy Duty Header Bar Kit

**IMPORTANT:** Thank you for purchasing this Poison Spyder product. Please read through this entire document before proceeding with installation. If you are not confident in your mechanical skills, please seek the help of a professional to perform the installation. Check your packages immediately upon arrival to ensure that everything listed is included, and to check for damage during shipping.

### APPLICATIONS

These installation instructions apply to the following Poison Spyder products:



14-18-030 TJ Heavy Duty Header Bar Kit

### PARTS LIST

Please check your packages immediately upon arrival to ensure that everything listed is included, and to check for damage during shipping.

- (1) Right Heavy Duty Header Bar (2-piece)
- (1) Left Heavy Duty Header Bar (2-piece)
- (2) 7/16-20 X 2-1/2 Gr8 Hex Head Cap Screw
- (2) 7/16-20 Nylon Insert Lock Nut
- (4) 7/16 Flat Washer

### TOOLS NEEDED

- 11/16" wrench
- 5/8" socket, ratchet and torque wrench
- T-50 "Tamper-Proof" Torx driver bit (available from Poison Spyder Customs)

### BEFORE YOU BEGIN

You will want to either powder coat or paint the components prior to install. If painting yourself, careful preparation will make a big difference in the quality

and longevity of your paint job, even when using "rattle can" aerosol paints. Begin by thoroughly cleaning the components with solvent or de-greaser, then make sure all residue is removed. Even if you use cheap paint, try to use a good quality primer. "Etching" primers are best to use on bare, unpainted metal. Allow it to properly dry before painting, and between paint coats.

If powder-coating, mask off the tube area of the short pieces. These are a slip-fit into the long tube sections, and the thickness of the powder coat may hinder assembly of the pieces.

### INSTALLATION PROCEDURE

1. **Park vehicle on a level** surface and set the emergency brake. You will want to wear eye protection beyond this point.
2. **Remove the top, door surrounds** and any other obstructions to the header bars.
3. **Remove the factory header bars.** You may need a T-50 "Tamper-Proof" Torx bit for the rearward bolts that attach the header bars to the factory roll bar. Keep the removed Torx bolts as they will be re-used.
4. **Install the Heavy Duty Header Bars** using the factory Torx bolts. Note that the Heavy Duty Header Bars are specific for right and left sides. Orient them with the short piece attached to the roll bar, and the long piece attached to the windshield frame. Make sure the through-holes in the short piece are aligned with the slots in the long piece, then tighten the Torx bolts. Note that there are two sets of bolt holes on the plate, to fit the two different model year ranges. The unused bolt holes will be left empty.
5. **Insert a 7/16-20 X 2-1/2 Gr8 hex head cap screw** with 7/16 flat washer through the slot and hole where the two tubes overlap. Install a 7/16 flat washer and 7/16-20 Grade lock nut onto the end of the cap screw. Tighten the nut then torque to 40 ft.-lbs. Repeat for other side.
6. **Re-install the factory door surrounds**, top, and any other components that were removed prior to installation. The Poison Spyder Heavy Duty Header Bars come with properly located mounting holes for re-installation of the door surrounds.