

PlastiColor®

DRIVER'S SIDE FLOOR MAT INSTALLATION INSTRUCTIONS

Thank you for your purchase. For over 40 years PlastiColor® has been the leader in quality floor and utility mats featuring popular licensed images. Please review the information provided here to assure safe installation and many years of enjoyable use.

! Important Safety Information

Before installation, take a moment to review the following safety information. Important safety information is generally preceded by one of three signal words indicating the relative risk of injury. The signal words mean:

! WARNING a hazardous situation which, if not avoided, could result in death or serious injury. **You CAN be Killed or Seriously Injured if you don't follow these instructions.**

! CAUTION a hazardous situation which, if not avoided, could result in minor or moderate injury. **You CAN be INJURED and also you may suffer property damage if you don't follow these instructions.**

NOTICE careful attention is required to this instruction or operation. Damage to your PlastiColor® product or other property may result if you don't follow these instructions.

! WARNING

Front floor mats may shift, interfering with pedal operation. **To reduce risk of injury, accident, or property damage:**

- Ensure correct floor mat is selected for driver's side, if applicable. Otherwise, select one of the matching mats. Mats on driver's side must be positioned and anchored to provide minimum one inch clearance between front edge of mat and vehicle pedals. **Use only with mat design facing UP.**
- Remove any other floor mat so bottom of your PlastiColor® mat lies directly upon carpet. **Never stack PlastiColor® mat on top of another floor mat.**
- **Install PlastiColor® anchor system per instructions below.**
- **Do not use floor mat and/or anchor system if torn, broken or otherwise damaged.**
- Review all instructions and safety messages included with this product and in your automobile Driver's Manual. Share this information with other drivers of your vehicle.



INSTALLATION INSTRUCTIONS

! WARNING: Mats must be secured to automobile carpeting using anchor system supplied with this product. **DO NOT STACK PLASTICOLOR® MAT ON ANY OTHER FLOOR MAT OR LINER. Do not use or try to affix PlastiColor® mat or anchor system where vehicle does not have firmly secured floor mat carpeting in good condition.**

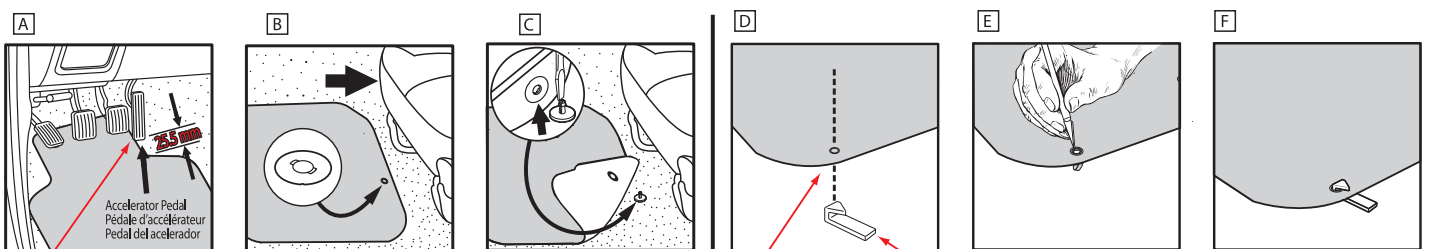
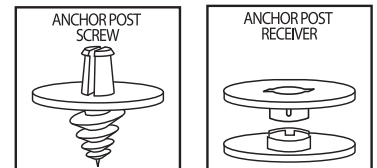
1. Position mat on floorboard of the driver's side of vehicle, ensuring that the mat does not interfere with any of the vehicle's pedals. (See diagram A)
2. Determine the best spot on your carpet for the Anchor Post Screw. Be sure to align the Anchor Post with the floor mat in order to determine where to cut a 1/2" Hole in the mat and mark this spot. (B)
3. Use a screwdriver to screw Anchor Post Screw into floorboard carpeting in the spot marked. Exert downward pressure WITHOUT EXCESSIVE FORCE while turning to allow anchor point to pierce floor carpet. Anchor Post Screw will not screw down tightly, but will rotate freely when properly installed. (C)
4. **NOTICE:** Anchor Post Receiver attaches to mat using 1/2" hole to be cut out along the bottom edge. Mark hole to be cut out that properly positions mat with minimum one inch clearance between front edge and pedals. Secure mat on work bench and using a small knife, carefully cut out 1/2" hole in floor mat (E). Then snap Anchor Post Receiver (2 piece) around hole you just cut. Note, **the piece with the inner circle goes on the bottom and the piece with the notches on the sides of the inner circle goes on top.**
5. Place mat into position, snapping Anchor Post Receiver onto the Anchor Post Screw to secure mat in place.

To remove mat for cleaning, pull up on rear of mat to unsnap from post. To re-install mat, snap the Anchor Post Receiver on mat onto Anchor Post once again and push down to snap mat in place.

Optional Method for Securing Mats (Floor Boards with Factory Installed Anchor or Hook)

! WARNING: Not all factory installed floorboard hooks will properly secure a PlastiColor® floor mat using this method, therefore always use the installation method incorporating PlastiColor® anchors (anchor post screw and receiver). Using the factory hook is an optional, secondary method for those consumers who choose to use it in addition to the PlastiColor® provided anchors.

1. Place mat on floorboard, ensuring that the mat does not interfere with any of the vehicle's pedals (A).
2. Mark the spot on the mat where it aligns with the floorboard anchor (hook).
3. Secure mat on workbench, using a small knife carefully cut a 1/2 inch hole in the mat where the spot is marked (E).
4. Insert anchor (hook) on floorboard through Cut-Out Hole to secure mat in place (D).



25.5 mm (1 inch) minimum clearance all around accelerator when pedal is fully depressed.

1/2 inch Hole

Factory installed anchor

Trimming instructions

In most cases your new mats will fit nicely without any trimming. After placing the mats in your vehicle, you can decide if trimming is preferred. In some cases, the driver side and passenger side floorboards are sized differently (i.e. the passenger side floorboard is smaller than the driver side). If you prefer a better fit, carefully trim either side, to your preference, along a trim line.

— = Trim line

