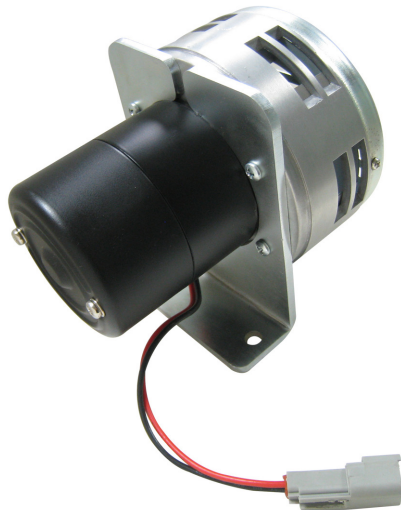
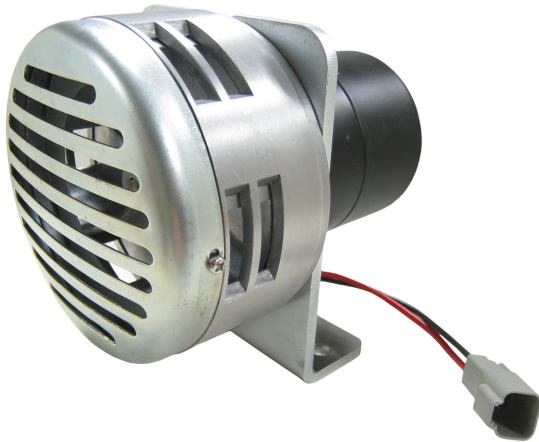


HEAVY DUTY CATTLE SIREN

PIERCE

PULLING FOR YOU



CATEGORY	RANCH
-----------------	-------

PART NO.	PS093
-----------------	-------

PRODUCT DESCRIPTION	
12V Heavy Duty Cattle Siren	

SPECIFICATIONS	
DIMENSIONS	4.5" x 4.5" x 6.33"
BOX DIMENSIONS	5.63" x 5.63" x 7.15"
VOLTAGE	12V
RUN TIME	10 mins.
DECIBEL LEVEL	135 dB
WARRANTY	2 years

The moisture drain is located on the bottom of the cattle siren, and must be facing downwards to prevent moisture from accumulating.

To rotate mounting bracket for upside down mounting remove the four philips head screws.

Pull bracket back.

Rotate bracket and bolt back into place. This will allow the moisture drain to remain facing downwards.

