

# CHAIN BREAKER

Stock Number W89100

## OWNER'S MANUAL

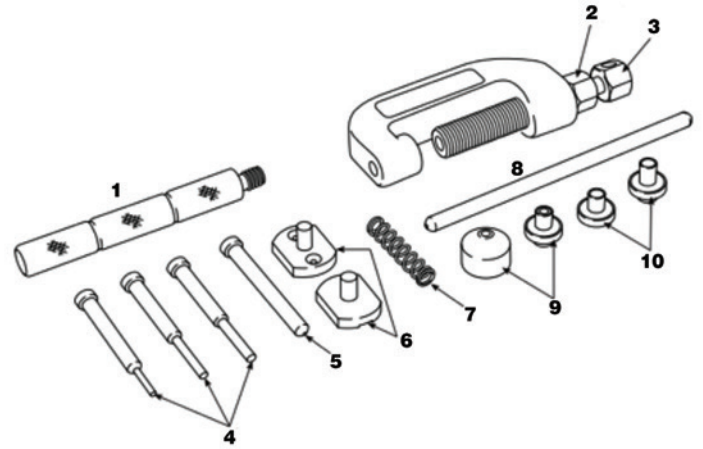


Please read these instructions carefully and retain them for future use.

On occasion, after printing of our literature is completed, our manufacturers may make changes and/or modifications to merchandise which will not be reflected in this manual. Although we strive to maintain complete and accurate information, it is possible in some instances, that the product may differ slightly from printed specifications. Illustrations are intended for reference only. Actual merchandise may vary. Wilmar is not responsible for typographical errors.

Performance Tool®

## PACKAGE CONTENTS



#	Description	Qty.
1	Handle	1
2	Alignment Bolt	1
3	Push Bolt	1
4	Breaking Tips	3
5	Rivet Tip	1
6	Press Plate	2
7	Spring	1
8	Lever	1
9	Guide	2
10	Anvil	2

2

## IMPORTANT SAFETY INFORMATION

**WARNING!**  
**READ, UNDERSTAND AND FOLLOW ALL INSTRUCTIONS AND WARNINGS BEFORE OPERATING THIS TOOL. FAILURE TO DO SO MAY RESULT IN PERSONAL INJURY AND/OR PROPERTY DAMAGE AND WILL VOID WARRANTY.**

**CAUTION:** To prevent personal injury, wear eye protection that meets ANSI Z87.1 and OSHA standards.

Prevent equipment damage:

Do not use power tools or pipe extensions with this tool, hand tighten only.

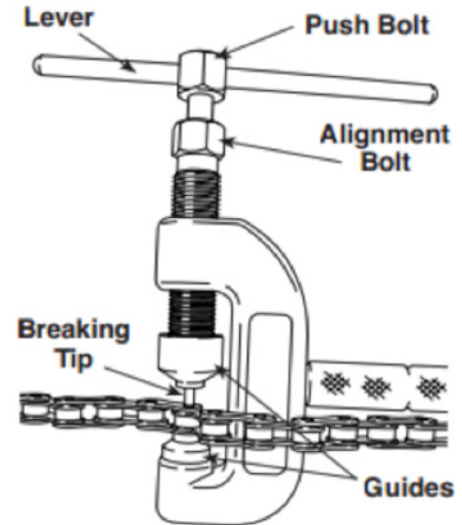
To ensure longer life clean and lubricate threads before each use. It may be necessary to grind the rivet head on #520 and larger chains.

**WARNING:** This product and its packaging contain a chemical known to the State of California to cause cancer, birth defects, or other reproductive harm.

**WARNING:** The warnings, cautions, and instructions discussed in this instruction manual cannot cover all possible conditions and situations that may occur. It must be understood by the operator that common sense and caution are factors which cannot be built into this product, but must be supplied by the operator. Read and understand all of the instructions provided in the instruction manual of this product, as well as, any other tool (s) used with this product.

1

## BREAKING YOUR CHAIN



1. Start by assembling the tool, thread the alignment bolt into the C-frame.
2. Match the breaking tip that best fits your application.
3. Insert the breaking tip into the spring, and slide them both into the alignment bolt.
4. Thread the push bolt into the alignment bolt above the tip.
5. Position the tool over the chain, be sure the breaking tip aligns with the chain pin.
6. Tighten the push bolt by hand using the slide handle or a 14-mm wrench.
7. Pushes the chain pin completely out of the chain and through the hole in the C-frame.

3

## PRESSING SIDE PLATES

1. Thread the alignment bolt into the C-frame.
2. Assemble the press plates into the tool. Place the grooved press plate into the hole in the C-frame; insert the other press plate into the alignment bolt.
3. Verify the chain pins are aligned with the groove and holes in the press plates.
4. Use a 14-mm wrench to tighten the alignment bolt until chain pins protrude past the face of the side plate.

### Clip-type Master Links

The pins must protrude enough to install the clip into the grooves in the chain pin.

### Rivet-type Master Links

The pins must protrude enough to be flared over the side plate.

Refer to the chain manufacturer's specifications for chain pin protrusion as well as the direction and installation of master link clips.

## RIVETING CHAIN PINS

1. Thread the alignment bolt into the C-frame.
2. Insert the rivet tip into the spring and slide them both into the alignment bolt.
3. Thread the push bolt into the alignment bolt above the tip.
4. Place the large anvil in the hole in the C-frame.
5. Place the tool over the chain pin to be riveted, with the hollow end of the chain pin facing the rivet tip.

NOTE: The small anvil is used for cam chains up to the 3-series.

6. Verify the rivet tip is withdrawn enough to clear the end of the chain pin.
7. Tighten the alignment bolt securely against the side plate of the chain pin.

4

## RIVETING CHAIN PINS CONT.

8. Tighten the push bolt by hand using the lever or a 14-mm wrench until the rivet tip spreads the hollow nose of the chain pin. Now the end of the chain pin should be flared over the side plate just enough so the side plate is solidly held in place. Repeat this procedure on the other chain pin.
9. Remove the tool from the chain. Verify both chain pins show the same size flares. Verify the riveted-on side plate is aligned with the side plates of the adjacent chain links.

5

### LIMITED WARRANTY

PERFORMANCE TOOL® extends only the following warranties, and only to original retail purchasers. These warranties give specific legal rights. Except where prohibited by local law, the law of the State of Washington governs all warranties and all exclusions and limitations of warranties and remedies. There may be other rights which vary from state to state.

PERFORMANCE TOOL® warrants the product to be free from defects in materials and workmanship under normal use and service. A defective product may be returned for a free replacement within 90 days from the date of purchase, provided that product is returned to place of purchase immediately after discovery of defect. After 90 days and up to one year from date of purchase, PERFORMANCE TOOL® will replace at no charge any parts which our examination shall disclose to be defective and under warranty. These warranties shall be valid only when a sales receipt showing the date of purchase accompanies the defective product or defective part (s) being returned.

These warranties exclude blades, bits, punches, dies, bulbs, fuses, hoses, and other consumables which must be replaced under normal use and service. These warranties shall not apply to any product or part which is used for a purpose for which it is not designed, or which has been repaired or altered in any way so as to affect adversely its performance or reliability, nor shall these warranties apply to any product or part which has been subject to misuse, neglect, accident or wear and tear incident to normal use and service.

PERFORMANCE TOOL® does not authorize any other person to make any warranty or to assume any liability in connection with its products.

Except for warranties of title and the limited express warranties set forth above, PERFORMANCE TOOL® makes no express or implied warranties of any kind with respect to its products. In particular, PERFORMANCE TOOL® makes no implied warranty of merchantability and no implied warranty of fitness for any particular purpose, except that for goods purchased primarily for personal, family or household use and not for commercial or business use, PERFORMANCE TOOL® makes an implied warranty of merchantability (and, if otherwise applicable, an implied warranty of fitness for a particular purpose), but only for the particular qualities or characteristics, and for the duration, expressly warranted above. The laws on limitation of implied warranties may differ from state to state, so the above limitations may not apply in all cases.

PERFORMANCE TOOL® shall not be liable for consequential, incidental or special damages resulting from or in any manner related to any product, or to the design, use, or any inability to use the product. The sole and exclusive remedy for a defective product or part shall be the repair, or replacement thereof as provided above. The laws on limitation of remedies or on consequential, incidental or special damages may vary from state to state, so the above limitations may not apply in all cases.

6