

1-1/2 Ton LOW PROFILE ALUMINUM FLOOR JACK

Stock Number W1601

OWNER'S MANUAL



▲ WARNING

It is the owner and/or operators' responsibility to study all WARNINGS, operating, and maintenance instructions contained on the product label and instruction manual prior to operation of this low profile aluminum floor jack. The owner/operator shall retain product instructions for future reference. The owner and/or operator are responsible for maintenance, maintaining all decals or warning labels and while in use, maintaining the unit in good working order. If the owner and/or operator are not fluent in English, the product warnings and instructions shall be read and discussed with the operators' native language by the purchaser/owner or his designee. Make sure that the operator comprehends its contents. Safety information shall be emphasized and understood prior to usage. The low profile aluminum floor jack shall be inspected per the operating instructions. Users of this low profile aluminum floor jack must fully understand these instructions. Each person operating this low profile aluminum floor jack must also be of sound mind and body and must not be under the influence of any substance that might impair their vision, dexterity, or judgment. Protect yourself and others by observing all safety information. Failure to comply with instructions could result in personal injury and/or property damage!

2 Ton Jack Stands

Stock Number W1601

OWNER'S MANUAL



⚠ WARNING

It is the owner and/or operators' responsibility to study all WARNINGS, operating, and maintenance instructions contained on the product label and instruction manual prior to operation of these jack stands. The owner/operator shall retain product instructions for future reference. The owner and/or operator are responsible for maintenance, maintaining all decals or warning labels and while in use, maintaining the unit in good working order. If the owner and/or operator are not fluent in English, the product warnings and instructions shall be read and discussed with the operators' native language by the purchaser/owner or his designee. Make sure that the operator comprehends its contents. Safety information shall be emphasized and understood prior to usage. These jack stands shall be inspected per the operating instructions. Users of these jack stands must fully understand these instructions. Each person operating these jack stands must also be of sound mind and body and must not be under the influence of any substance that might impair their vision, dexterity, or judgment.

Protect yourself and others by observing all safety information.
Failure to comply with instructions could result in personal injury and/or property damage!

**Performance
Tool**

WARNING

DO NOT UNDER ANY CIRCUMSTANCES, REMOVE THE SAFETY VALVE SEAL BOLT AND ADJUST THE VALVE.

PLEASE USE THE FOLLOWING DIAGRAM WHEN THERE IS A NEED TO FILL AND BLEED THE JACK'S OIL RESERVOIR.

Included with the jack is a Bleeder Valve that can be used instead of the oil reservoir seal bolt. Simply replace the seal bolt with the Bleeder Valve. The seal washer must also be used. To add oil to the jack, remove the bleeder valve and add oil as per manual instructions, then replace the valve. The operation of the Bleeder Valve is completely automatic and no adjustment by the consumer is needed. To bleed the jack, turn the handle 1-1/2 turns counter clockwise and pump the handle assembly several times to purge air from the hydraulic system. The valve will also automatically purge air from the hydraulic system during regular use.

REPLACEMENT PARTS AVAILABLE

PART NO.	DESCRIPTION	PART NO.	DESCRIPTION
W1604CK	Ram Repair Kit	W1604-19	Handle Base Screw
W1604-29	Front Wheel	W1604-20	Handle Assembly
W1604-10	Rear Wheel Saddle	W1604-41	Saddle
W1604-9	Rear Wheel		

LIMITED WARRANTY

PERFORMANCE TOOL extends only the following warranties, and only to original retail purchasers. These warranties give specific legal rights. Except where prohibited by local law, the law of the State of Washington governs all warranties and all exclusions and limitations of warranties and remedies. There may be other rights which vary from state to state.

PERFORMANCE TOOL warrants the product to be free from defects in materials and workmanship under normal use and service. A defective product may be returned for a free replacement within 90 days from the date of purchase, provided that product is returned to place of purchase immediately after discovery of defect. After 90 days and up to 1 year from date of purchase, PERFORMANCE TOOL will replace at no charge any parts which our examination shall disclose to be defective and under warranty. These warranties shall be valid only when a sales receipt showing the date of purchase accompanies the defective product or defective part(s) being returned.

These warranties exclude blades, bits, punches, dies, bulbs, fuses, and other consumables which must be replaced under normal use and service. These warranties shall not apply to any product or part which is used for a purpose for which it is not designed, or which has been repaired or altered in any way so as to affect adversely its performance or reliability, nor shall these warranties apply to any product or part which has been subject to misuse, neglect, accident or wear and tear incident to normal use and service.

PERFORMANCE TOOL does not authorize any other person to make any warranty or to assume any liability in connection with its products.

Except for warranties of title and the limited express warranties set forth above, PERFORMANCE TOOL makes no express or implied warranties of any kind with respect to its products. In particular, PERFORMANCE TOOL makes no implied warranty of merchantability and no implied warranty of fitness for any particular purpose, except that for goods purchased primarily for personal, family or household use and not for commercial or business use, PERFORMANCE TOOL makes an implied warranty of merchantability (and, if otherwise applicable, an implied warranty of fitness for a particular purpose), but only for the particular qualities or characteristics, and for the duration, expressly warranted above. The laws on limitation of implied warranties may differ from state to state, so the above limitations may not apply in all cases.

PERFORMANCE TOOL shall not be liable for consequential, incidental or special damages resulting from or in any manner related to any product, or to the design, use, or any inability to use the product. The sole and exclusive remedy for a defective product or part shall be the repair, or replacement thereof as provided above. The laws on limitation of remedies or on consequential, incidental or special damages may vary from state to state, so the above limitations may not apply in all cases.

SPECIFICATIONS

Capacity: 4,000 lbs.
Low Height: 10-1/4"
Max. Height: 15-1/4"
Range: 5"

**Specifications are subject to
change without notice**

IMPORTANT SAFETY INFORMATION

Read these safety warnings before operation.

WARNING!

Failure to heed these warnings may result in loss of load, damage to jack stands, and/or jack stand failure resulting in personal injury or property damage.

WARNING!

Do not overload jack stands beyond rated capacity. Overloading can cause damage to or failure of the jack stands.

POSITION LOAD ON CENTER OF SADDLE ONLY. ALWAYS USE STANDS IN PAIRS ON HARD, LEVEL SURFACE CAPABLE OF SUSTAINING THE LOAD. USE OF STANDS ON OTHER THAN HARD LEVEL SURFACES CAN RESULT IN STAND INSTABILITY AND POSSIBLE LOSS OF LOAD.

Be sure all personnel are clear of load before lowering load.

Ensure that no personnel pass underneath load until load is securely supported by jack stands.

ASSEMBLY

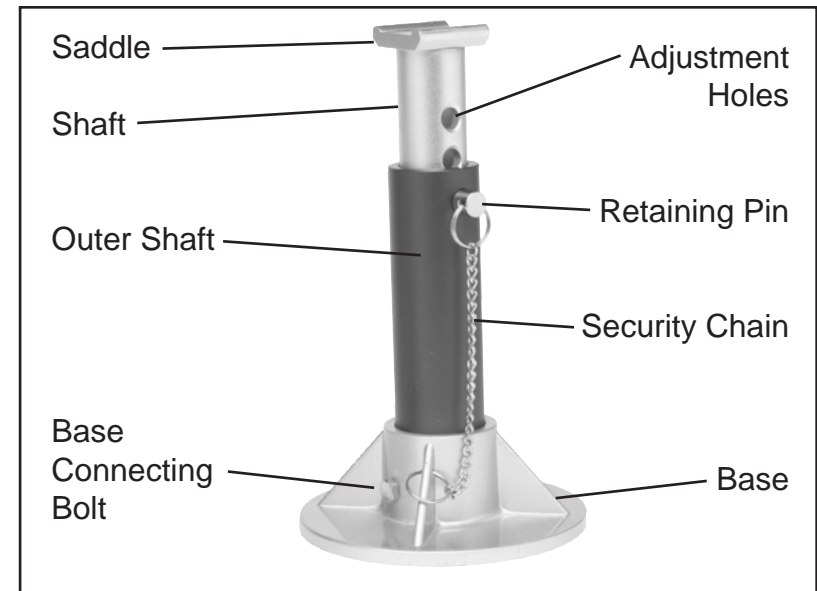
See Figure 1 for parts identification

1. Remove all contents from box.
2. Locate a base and remove the base connecting bolt.
3. Slide end of outer shaft without saddle into base and align holes in base with holes in outer saddle.
4. Slide shaft out of outer shaft until base connecting bolt can be inserted through base and outer shaft and secure with nut.
5. Fully insert retaining pin through holes in outer shaft and shaft.
6. Repeat above steps with other jack stand.

OPERATION

1. Refer to your vehicle owner's manual for proper jacking procedures. Lift only on areas of the vehicle as specified by vehicle manufacturer.
2. Position stands under vehicle at points specified by vehicle manufacturer as proper load support points.
3. To adjust stands: While holding shaft, remove retaining pin. Lift saddle to desired height. Adjust height to locate nearest hole in shaft and align with the holes in outer shaft. Insert retaining pin fully through holes in outer shaft and shaft.
4. Carefully lower load onto stands.

Figure 1



MAINTENANCE & INSPECTION

1. Visual inspection shall be made before each use of the stands, checking for cracks, cracked welds and missing and/or damaged parts. Any stand that appears to be damaged in any way shall be removed from service immediately.
2. **BECAUSE OF THE POTENTIAL HAZARDS ASSOCIATED WITH THE MISUSE OF EQUIPMENT OF THIS TYPE, NO MODIFICATIONS SHALL BE MADE TO THE PRODUCT.**

RAM ASSEMBLY

Check & refill hydraulic fluid here

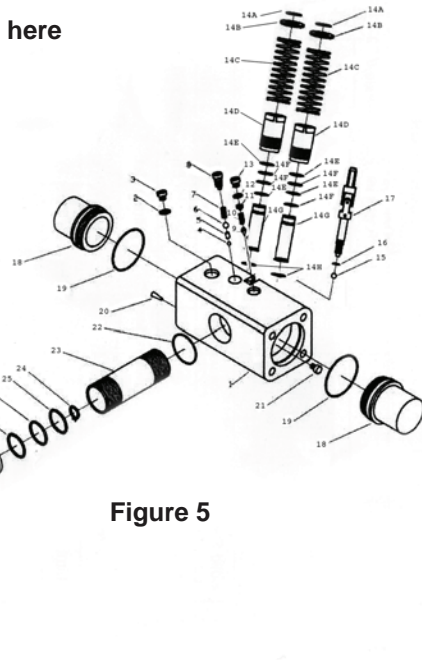
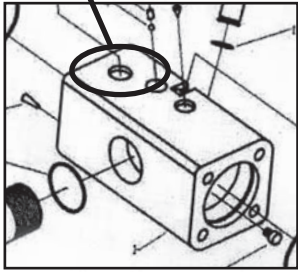


Figure 5

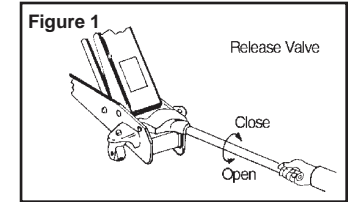
Ram Assembly List

#	Description	Qty.	#	Description	Qty.
1	Valve Body	1	14A	Retaining Ring For Axle 20	2
2	Washer	1	15	Steel Ball 8	1
3	Cap Screw	1	16	"O" Ring	1
4	Steel Ball 5.5	1	17	Release Valve Rod Assembly	1
5	Solid Steel	1	18	End Cover	2
6	Steel Ball 9	1	19	End Cover Seal	2
7	Taper Compression Spring	1	20	Filtrate Net	1
8	High Pressure Screw	1	21	Oil Stem	1
9	Thimble	1	22	Cylinder Washer	1
10	Adjustable Compression Spring	1	23	Oil Tank	1
11	Adjustable Pressure Screw	1	24	Axle Retaining Ring 16	1
12	Washer	1	25	"O" Ring	1
13	Valve Release Screw	1	26	Retaining Ring	1
14H	Pump Washer	2	27	Piston	1
14G	Pump Core	2	28	"O" Ring	1
14F	"O" Ring	4	29	Piston Rod	1
14E	Retaining Ring	4	30	Coat	1
14D	Pump Cylinder	2	31	Elastic Split Pin	1
14C	Pump Core Compression Spring	2	32	Joint Adaptor	1
14B	Retaining Ring	2			

ASSEMBLY & OPERATION

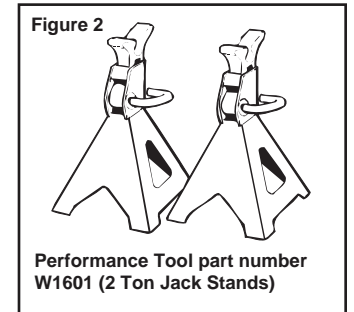
Handle Assembly

1. Insert the upper handle (20), into the lower handle.
2. Loosen the handle base screw (19). Insert the handle assembly into the handle base (17), engaging the release valve. (See figure 1)
3. Tighten the handle base screw (19)



Operation

1. Test the jack by turning the handle completely clockwise, and pump the handle up and down. The jack saddle should rise & stay at that level
2. Turn the handle counter clockwise. The saddle should lower completely.
3. Position the jack under the equipment or vehicle to be lifted.
4. Turn the handle clockwise to close the release valve.
5. Pump the handle up and down until the jack just touches the item being lifted. Adjust the jacks position so that the equipment or vehicle being lifted is centered on the jack's saddle.
6. Continue pumping the handle up and down until the jack is fully extended, or the equipment is lifted to the desired height.
7. Place jack stands, or other support devices under the equipment before attempting to perform any work in or around it. (See figure 2)
8. Slowly and carefully lower the load by turning the handle counter clockwise in extremely small increments.
9. When the jack is no longer being used. Store the jack with the release valve open (handle turned completely counter clockwise).

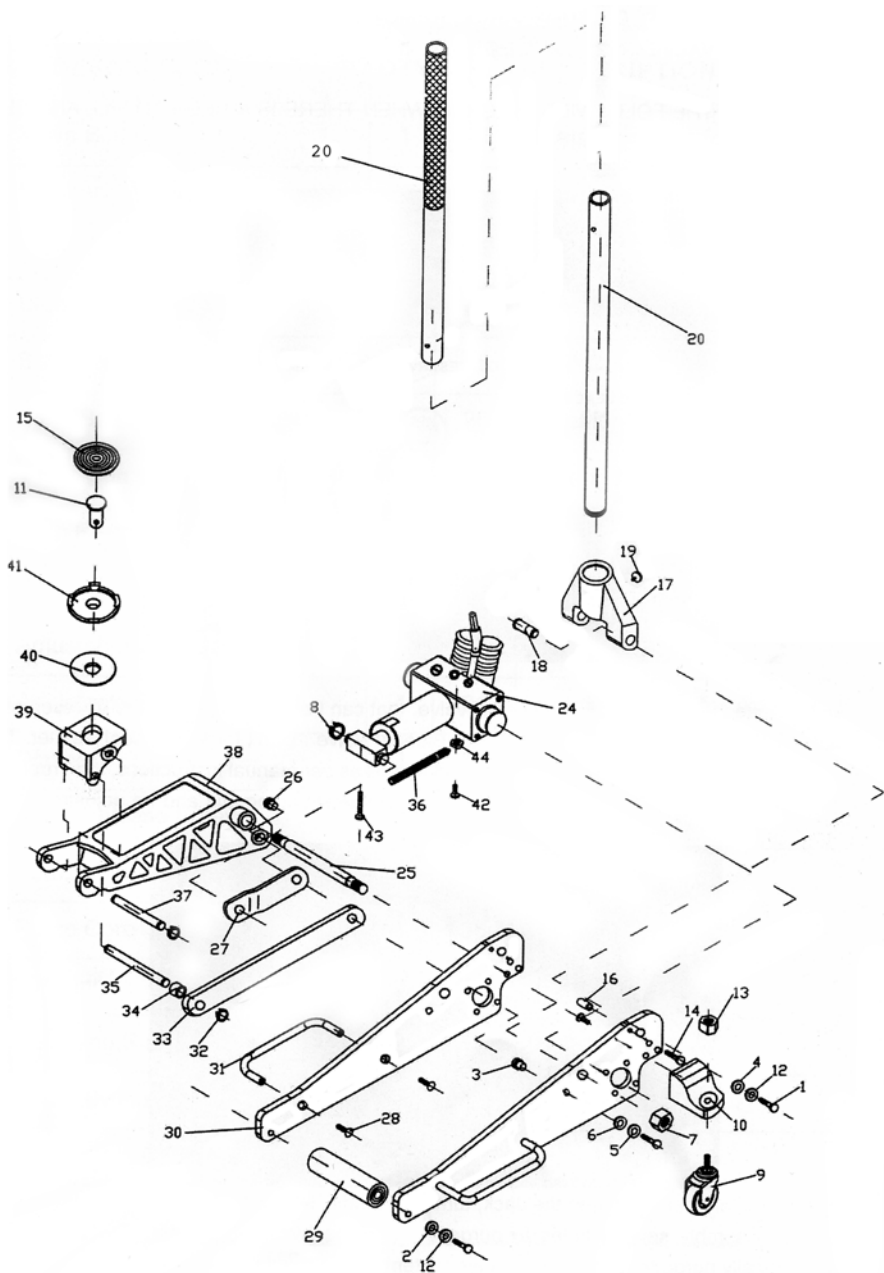


CARE & MAINTENANCE

Important: When adding or replacing hydraulic fluid, always use a quality hydraulic fluid. DO NOT use brake fluid, alcohol, detergent motor oil or dirty oil, as improper fluid can cause serious internal damage to the jack.

To add hydraulic fluid: With the saddle fully lowered and the jack on level ground, remove filler plug. Hydraulic fluid should be filled to the level of the hydraulic fluid filler plug hole. If hydraulic fluid level is low, add fluid as needed.

JACK BREAKDOWN



BREAKDOWN LISTING

#	Description	Qty	#	Description	Qty
1	Screw, M10 x 25	18	25	Raise Arms Axis	1
2	Flat Washer 10	2	26	Pull Rod Axis	2
3	Link Rod Axis	2	27	Pull Rod	2
4	Large Flat Washer 10	2	28	C.Cross Sunk Bolt M8x20	4
5	Linkage Washer 8	2	29	Wheel, Front Caster	1
6	Flat Washer 8	2	30	Right Side Frame	1
7	Lock Nut M18	2	31	Carrying Handle	2
8	C Back Up Ring	4	32	C-ring, S16	4
9	Rear Wheel Set	2	33	Link Rod	2
10	Rear Wheel Saddle	2	34	Link Rod Washer	2
11	Bolt	1	35	Saddle Base Axis Long	1
12	Linkage Washer 10	1	36	Spring	1
13	Lock Nut M12	2	37	Saddle Base Axis Short	1
14	Screw, M8 x 25	4	38	Lift Arm	1
15	Rubber Saddle Pad	1	39	Saddle Base	1
16	Screw Bushing	2	40	Nylon Washer	1
17	Handle Base	1	41	Saddle	1
18	Pin	2	42	Bolt M6 x 25	1
19	Handle Base Screw	1	43	Bolt M6 x 40	1
20	Upper/Lower Handle	1	44	Nut M6	1
24	Power Unit Assem.	1	45	Left Side Frame	1

SPECIFICATIONS

Capacity: 3,000 lbs. **Overall Dimensions:**
Low Height: 3-1/4" **Length:** 19-3/4"
Max. Height: 14-3/4" **Width:** 9-1/2"
Lift Range: 11-1/2" **Height:** 5"
Weight: 24 lbs. **2 pc Knurled Handle:** 36-1/4"

Specifications are subject to change without notice

IMPORTANT SAFETY INFORMATION

WARNING!

Carefully and thoroughly read through the entire owner's manual before operating this floor jack. Keep this manual with other important records for safety instructions, operating procedures and warranty information.

After unpacking your new aluminum floor jack, inspect all of the components for any damage that may have occurred during transit. Do not operate this floor jack if any damage has occurred during shipping and handling. All damaged parts must be repaired or replaced prior to operating the jack.

DO NOT remove any labels from this tool.

Failure to follow all warning instructions and labels may result in personal injury or property damage.

WARNING!

Always stay alert while operating any tool or piece of equipment. Watch what you are doing and use common sense when operating equipment and tools.

Operating any tool or piece of equipment under the influence of drugs, alcohol, or medication can cause personal injury to yourself and others.

Always keep the work area clean. Cluttered areas invite injuries.

Always keep children away from work areas.

DO NOT overload this equipment. Know the weight of the item being lifted. Attempting to lift a load exceeding the maximum weight capacity can cause the jack to fail leading to property and/or serious personal injury.

DO NOT work under the vehicle being lifted by the jack.

Use the jack for lifting only. DO NOT use this equipment for any other purpose. Immediately after lifting the load, support the load with appropriate supporting equipment.

Place Jack correctly. Only use this equipment on a surface that is stable, level, clean, dry and capable of sustaining the load.

Stabilize the load being lifted. Ensure that the load remains stable at all times. Do not move the load while on the jack. Lift dead loads only.

When lifting a vehicle, apply the vehicles emergency brake, and block all wheels.

Center the load on the jack saddle. Off center loads can damage the seals, causing jack failure.

TROUBLESHOOTING

Your Performance Tool hydraulic jack was constructed of quality materials and workmanship and will give you many years of trouble free use when cared for as described in the "Care & Maintenance" section on page 3. However, as with any mechanical device, periodic adjustments are necessary to maintain a peak level of performance. Should your jack be displaying any of the following symptoms, the simple procedures shown below will correct the problem.

WARNING - Remove jack from service before making adjustments

Will not lift load	●	●	●
Will not hold load			●
Will not lift to full height	●	●	
Pump feels "spongy" under load	●	●	
Handle raises under load			●
Handle lowers under load			●
Power unit may be low on fluid. With jack on level surface and in down position, remove filler plug and add clean hydraulic jack fluid to level of filler hole.	Power unit may be airbound. Open the release valve a minimum of 2 full turns. Pump the handle a minimum of 20 full strokes to purge air from the system.	Valves may not be closing completely. To seat valves: a.) Close release valve. b.) With jack in fully lowered position, manually raise lifting arm as high as possible. c.) Open release valve and allow jack to descend to lowered position.	

NOTE:

Problems listed above with more than one solution may have a combination of causes. Please be sure that all solutions listed for each problem have been checked to eliminate possibility of further trouble. Sometimes solutions may need to be repeated for best results.