

PENSKE

≡≡≡ RACING SHOCKS ≡≡≡

7150 SERIES SHOCK ABSORBER—BASE EDITION



The 7150 Series gas shock is the latest short track offering from Penske Racing Shocks. Simplified design, advanced coatings and materials, and volume purchasing, provide for a cost effective shock without losing the high-quality damping components, consistency, reliability, and unlimited turning options found in any Penske Racing Shock. The 7150 is a high-performance alternative to other steel shocks on the market, for teams looking to have a competitive advantage.

Options:

- Non Adjustable - Fixed Bleed Jet
- 7.0" or 9.0" Lengths
- Standard or 1.0" or 2.0" Extended Eyelets
- Coil-Over Kit Adaptable
- Standard Schrader Valve or Externally Sealed Gas Valve

Features:

- Steel Components
 - Meets Racing Sanctions Material Requirements
- Electroless Nickel Plated Components
 - Added Durability and Long Life
- Chrome Plated Shaft
- Roller Burnished Shock Bores
- Various 55mm Piston Options

Benefits:

- Built to Customer Specifications
- Custom-Valved for Driver Feel or Chassis Set-Up
- Owner Rebuildable
- Consistent Performance

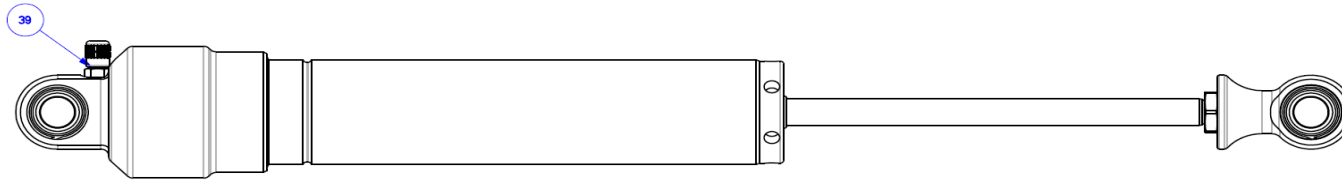
Piston Options:

- PI-7511005 (1°/1° Linear)
- PI-HF11005-6061 (1°/1° High Flow)
- PI-HF14005-6061 (1°/4° High Flow)

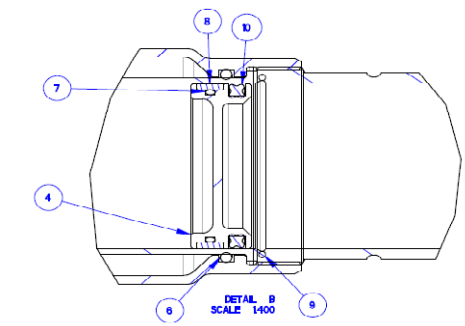
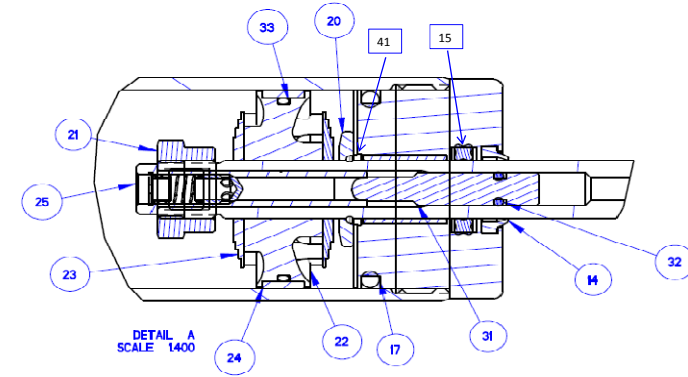
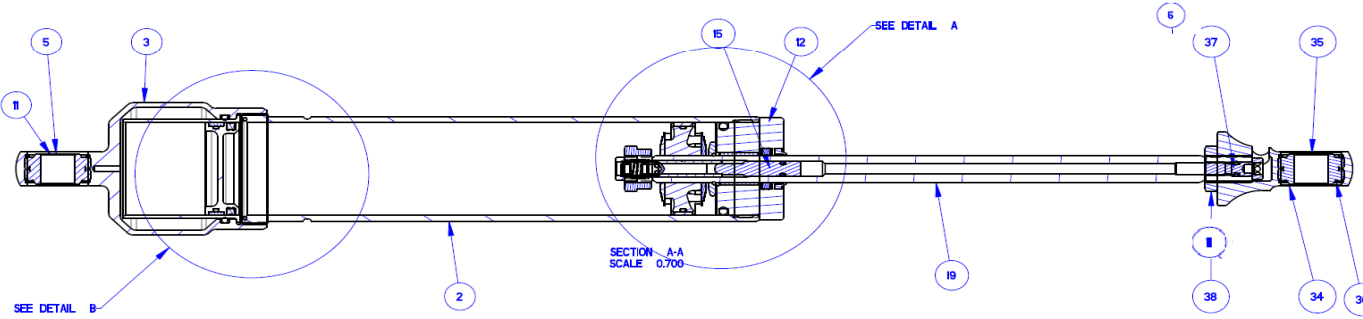
PS-7150-BE

Non Adjustable, Steel Body, 7" or 9", No Oil or Shims

The Competitive Advantage of Champions



SCALE 0.700



ITEM #	PART #	DESCRIPTION	QTY PER SHOCK
2	BD-7157-S	BODY, 7150, 7.00" SHORT	1
3	BC-7150	BODY CAP, 7150	1
4	PI-75	PISTON, 7500 FLOATING	1
5	MO-09	MONOBALL, .500 ID X 1.00 OD X .625W	2
8	PB-55T	PISTON BAND, THIN	1
9	RR-06	WIRE RING, .0625 WIRE DIAM.X1.900	1
10	OR-4221-B	QUAD RING, 4-221 BUNA 70 DURO	1
11	RR-16	RET RING, 1.025 SPIROLOC, STAINLESS	4
12	AS-75THSB-500	ASSM, 7500 SHAFT BEARING .500ID	1
14	SL-06	WIPER, SHAFT BEARING	1
15	NE-76	NEEDLE, ADJUSTABLE ONLY	1
16	OR-4206-B	QUAD RING, 4-206 BUNA 70 DURO	1
17	OR-2221-B	O-RING, 2-221 BUNA 70 DURO	1
19	SH-76NA	SHAFT, 7600 NON ADJ 7" OR 9"	1
19A	SH-76A	SHAFT, 7600 ADJUSTABLE 7" OR 9"	1
20	VW-7600	TOP OUT PLATE, 7600	1
21	NT-02R	RING NUT, .500 X 20, .440 LONG	1
22	PI-HF12005	PISTON, H/F 1 1/2"	1
23	VS-AA,A,B,C,D,E,F	SHIM STACK	2
24	PB-55	PISTON BAND	1
25	JT-000/020/040/070	JET, .000,.020,.040,.070 BLEED (NON ADJUST)	1
25A	JT-76RD/CD/HSNG	JET, ADJUSTABLE OPEN, COMPRESSION, REBOUND	1
32	OR-2007-B	O-RING, 2-007 BUNA 70 DURO (ADJ ONLY)	1
33	OR-2028-B	O-RING, 2-028 BUNA 70 DURO	2
34	EY-76150/76NA	EYELET, 7600 (SINGLE OR NON ADJUST)	1
37	RS-7600	ADJUSTER SCREW W/ OR-2008-B INSTALLED	1
38	NT-14J	JAM NUT, .500 X 20	1
39	IU-18-A	AIR VALVE, PORT O-RING, ALUM.	1
39A	OR-2010-B	O-RING, 2-010 BUNA 70 DURO	1
39B	IU-04	VALVE CORE, 2000 PSI	1
39C	IU-06	VALVE CAP, HIGH TEMPERATURE	1
41	RR-07	WIRE RING, .062 WIRE DIAM.X .500	1